

Metadata, CENCAL1.2.mdb
October 1, 2004

File Name: CenCal1.2.mdb

File Type: Microsoft Access Database

Source Data: CLEN_6.mdb (Spearfish survey data compiled by David VenTresca, California Department of Fish & Game, Marine Region.)

Database Description: These data were provided in a single (flat) file which was then distributed into multiple relational tables in Microsoft Access. This relational database provides a form based interface to assist users in data entry, query building (data conditioning and export), and access to current products and metadata derived from these data. Data integrity is controlled through table properties and relationships as well as specific limited interactions with forms. The focus of this product is to allow users, unfamiliar with database use, to easily query desired data and export those data in a condition ready for analysis with a more familiar or capable application.

Abstract: Information on long-term trends in fish populations, derived from fishery-dependent sources such as commercial and recreational fisheries surveys, are needed to reach effective management decisions (Beard and Kampa, 1999, Cole et.al.,2003, Dumont and Schlechte, 2003). Fishery-dependent data are identified by the Marine Life Management Act as essential fishery information (EFI) crucial for the efficient management of California's living marine resources. Due to the selectivity of fishermen, the variability of data acquisition methods, and regulation changes, there are limitations to the usefulness of data from recreational fishing club records. However, these data, often show valuable time-series patterns in species composition, length frequencies, and catch-per-unit-effort (CPUE). Annual monitoring of recreational spearfish competitions allows assessment of changes in important nearshore fishery population indices. Marine biologists from the California Department of Fish and Game (Department) Central California Marine Sport Fish Survey (Project) have collected data at recreational freediving spearfish competitions conducted by the Central California Council Diving Clubs, Inc. (Cen Cal) for 46 years. This has provided a long-term record of the catch in this specialized fishery (spearfishermen) occurring in nearshore kelp and rocky reef areas.

Purpose: To provide a dynamic container for the data collected during the monitoring of Cen Cal spearfish competitions. This container provides useful tools for building queries, manipulating and exporting data, and reviewing current documents related to the project.

Data Dictionary:

Table	Field	Attribute	Field Alias	Format	Expected Values	Definition of Expected Values
Tbl_Location	LOCA	Unique 4-digit location code where competition was held	Loca	text	see table	
	Location	Name of competition location	Location	text		
	Abbreviation	Abbreviation of competition location; used in zarea aggregation	ABREV	text		
	City	Closest city to competition	C_C	text		
	County	County of competition		text		
	zarea	Locations of close proximity are grouped into zarea. First 2 characters represent dominant location and third character represent total number of locations in zarea. (Example LK2 = 2 locations near Limekiln)	Area	text		
	zregion	Relative geographic region of California for the location	Region	text		
Tbl_Meets	LOCA	Unique 4-digit location code where competition was held	Loca	text	see Tbl_Location	

Table	Field	Attribute	Field Alias	Format	Expected Values	Definition of Expected Values
	DATTT	Unique number entered as year-month-day (20030524)		text		
	DATE	Entered as month/day/year (05/24/1999)	Date	date		
	MEETYPE	Unique 1 character ID for the type of competition held	MtypeID	text	see Tbl_MeetType	
	VIS	Unique 1 character ID for visibility range	VisID	text	see Tbl_Visibility	
	SURGE	Unique 1 character ID for relative surge	SurgeID	text	see Tbl_Surge	
	TXTDC	Unique 1 Character ID for overall diving/surface conditions	ConditionID	text	see Tbl_Conditions	
	ADIVERS	Number of highly skilled fishers (relative to Cen Cal ranking) in a given competition	A	number		
	BDIVERS	Number of intermediate skilled fishers (relative to Cen Cal ranking) in a given competition	B	number		
	CDIVERS	Number of beggining fishers (relative to Cen Cal ranking) in a given competition	C	number		

Table	Field	Attribute	Field Alias	Format	Expected Values	Definition of Expected Values
	WDIVERS	Number of women fishers (relative to Cen Cal ranking) in a given competition	W	number		
	TDIVERS	Total number of fishers participating in a given competition	Total Divers	number		
	THOURS	Total number of fisher hours in a given competition	Total Hours	number		
	RPTS	Are reports available for this competition?		text		
	TYPE_TL	Abbreviated method of measurement used for data collection		text	see Tbl_MeetType	
	DBASTYPE	Original format of competition data		text		
	Regulations	Regulations applicable to competition ***RECORDS CURRENTLY NOT INCLUDED***		text		
Tbl_areas	zarea	Locations of close proximity are grouped into zarea. First 2 characters represent dominant location and third character represent total number of locations in zarea. (Example LK2 = 2 locations near	Area	text	NG AB1 CB4 CR2 FR4 FS1 LK2	Locations not grouped Anchor Bay (1) Carmel Bay (4) Point Pinos and Cannery Row (2) Fort Ross (4) Fanshell Beach (1) Limekiln Creek (2)

Table	Field	Attribute	Field Alias	Format	Expected Values	Definition of Expected Values
		Limekiln)			LW1	Leffingwell Landing (1)
					MO1	Montaña De Oro (1)
					NR2	Navarro River (2)
					PB1	Piedras Blancas (1)
					SB1	Shell Beach (1)
					SC2	Santa Cruz (2)
					SN1	Point Serra Nevada (1)
					SP1	Sharp's Point (1)
					SS2	San Simeon (2)
	ZaresDescription	Description of area and number of loca for area. Field used exclusively for display/query purposed in Query Builder.		text		
Tbl_Conditions	ConditionID	Unique 1 Character ID for overall diving/surface conditions	TXTDC	text	0	No Data
					1	Poor
					2	Fair
					3	Good to Excellent
Tbl_Filterfields	FilterListItem	Display text for Query Builder		text		
	Condition	Descriptive text referring to ConditionID		text		
	FieldID	Number ID		number		
	FilterField	Display text for availble fields in Query Builder		text		
	ListBoxLabel	Display text for label above filter window.		memo		
	TableName	Text used to specify table used for rowsource in Query Builder		text		

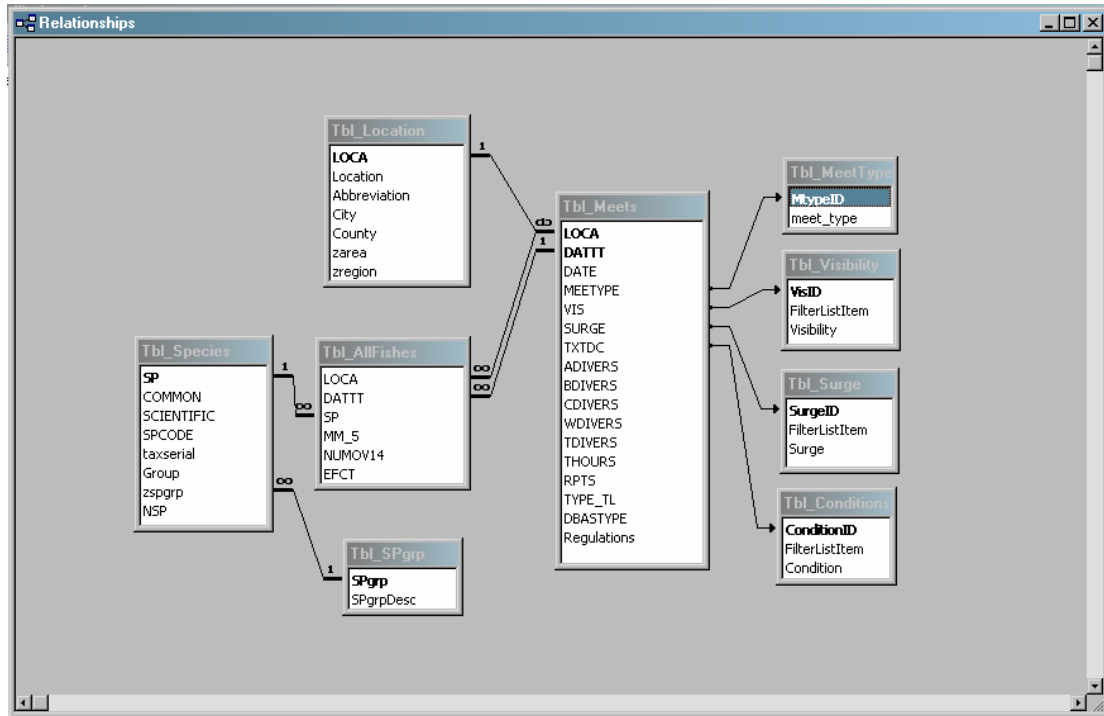
Table	Field	Attribute	Field Alias	Format	Expected Values	Definition of Expected Values
Tbl_AllFishes	QryField	Text used to specify field in SQL statement		text		
	QryTable	Text used to specify table rowsource in Query Builder		text		
	LOCA	Unique 4-digit location code where competition was held	Loca	text		
	DATTT	Unique number entered as year-month-day (20030524)		text		
	SP	Unique 4-digit species code		text		
	MM_5	Length of fish in mm		number		
	NUMOV14	Number of fish species that are over 14" for that competition		number		
Tbl_Grouping	EFCT	Total frequency for a fish species size in a competition		number		
	GroupingID	Number ID		autonumber		
	SpatialGrp	Spatial Grouping Option		text		
	TemporalGrp	Temporal Grouping Option		text		
	FishGrp	Species Grouping Option		text		
	Qry_CPUE	CPUE Query		text		
	Qry_SpComp	Species Composition Query		text		
Tbl_LU_month	Qry_LengthFreq	Length Frequency Query		text		
	MonthID	Numerical Month		number		
Tbl_MeetType	Month	Text Month		text		
	MtypeID	Unique 1	MEETTYPE	text	_ND	No Data

Table	Field	Attribute	Field Alias	Format	Expected Values	Definition of Expected Values
Tbl_Mtype	meet_type	character ID for the type of competition held	Meet type	text	C	Cen Cal Championship
					H	High Five
					I	Individual
					L	Lingcod Only
					N	U.S. Nationals
					O	Pole Spear Only
					P	Pacific Coast Championship
					S	Most Different Species
					T	Team
Tbl_Region	RegionID	Number ID		autonumber	1 2 3	North North - Central South - Central
	Region	Region description		text		
Tbl_Species	SP	Unique 4-digit species code		text	see table	
	COMMON	Common name of species (SP)	Common Name	text		
	SCIENTIFIC	Scientific name of species (SP)	Scientific Name	text		
	zspgrp	Species with similar characteristics are grouped into zspgrp.	Species Group	text	see Tbl_SPgrp	
Tbl_SPgrp	SPgrp	2 character ID for Species grouping	Species Group	text	CB EP GL LC OT RF SP	Cabazon Halfmoon, Opaleye, Sheephead, and Kelpbass Greenlings Lingcod Other Rockfishes Surfperches
	SPgrpDesc	Description of Species grouping	Species Group	text		
Tbl_Visibility	VisID	Unique 1	VIS	text	0	No Data

Table	Field	Attribute	Field Alias	Format	Expected Values	Definition of Expected Values
Tbl_Surge		character ID for visibility range			1	1-9 Feet
					2	10-20 Feet
					3	20+ Feet
	FilterListItem	Descriptive text referring to VisID, used in filter of Query Builder		text		
	Visibility	Descriptive text referring to VisID		text		
	SurgeID	Unique 1 character ID for relative surge	SURGE	text	0 1 2 3	No Data Low Surge Moderate Surge High Surge
Tbl_typeTL	FilterListItem	Descriptive text referring to SurgeID, used in filter of Query Builder		text		
	Surge	Descriptive text referring to SurgeID		text		
	TYPE_TL	Text ID for measurement method	Measurement Type	text	25/40>14	number over 14 inches and total number of all fish
					IF(.1CM)	individual fish measured in 1mm increments
					IF(.5CM)	individual fish measured in 5 mm increments
					IF(.5IN)	individual fish measured in 0.5 inch increments
					IF(1")	individual fish measured in 1 inch increments
					mm(rnge)	min and max size range by species

Table	Field	Attribute	Field Alias	Format	Expected Values	Definition of Expected Values
					NONE	no measurements; species composition only
					O/U 14	counts of individual fish of each species over and under 14 inches
	Description	Descriptive text referring to TYPE_TL	Measurement Type	text		
	FilterField	Text display for Filter Field in Query Builder		text		

Figure 1 – CenCal1.2.mdb Table relationships with fields and keys.



Contact:

David VenTresca
Associate Biologist
California Department of Fish & Game
dventres@dfg.ca.gov

Paulo Serpa
GIS Analyst
Pacific States Marine Fisheries Commission
California Department of Fish & Game
pserpa@dfg.ca.gov
mr_gis@dfg.ca.gov