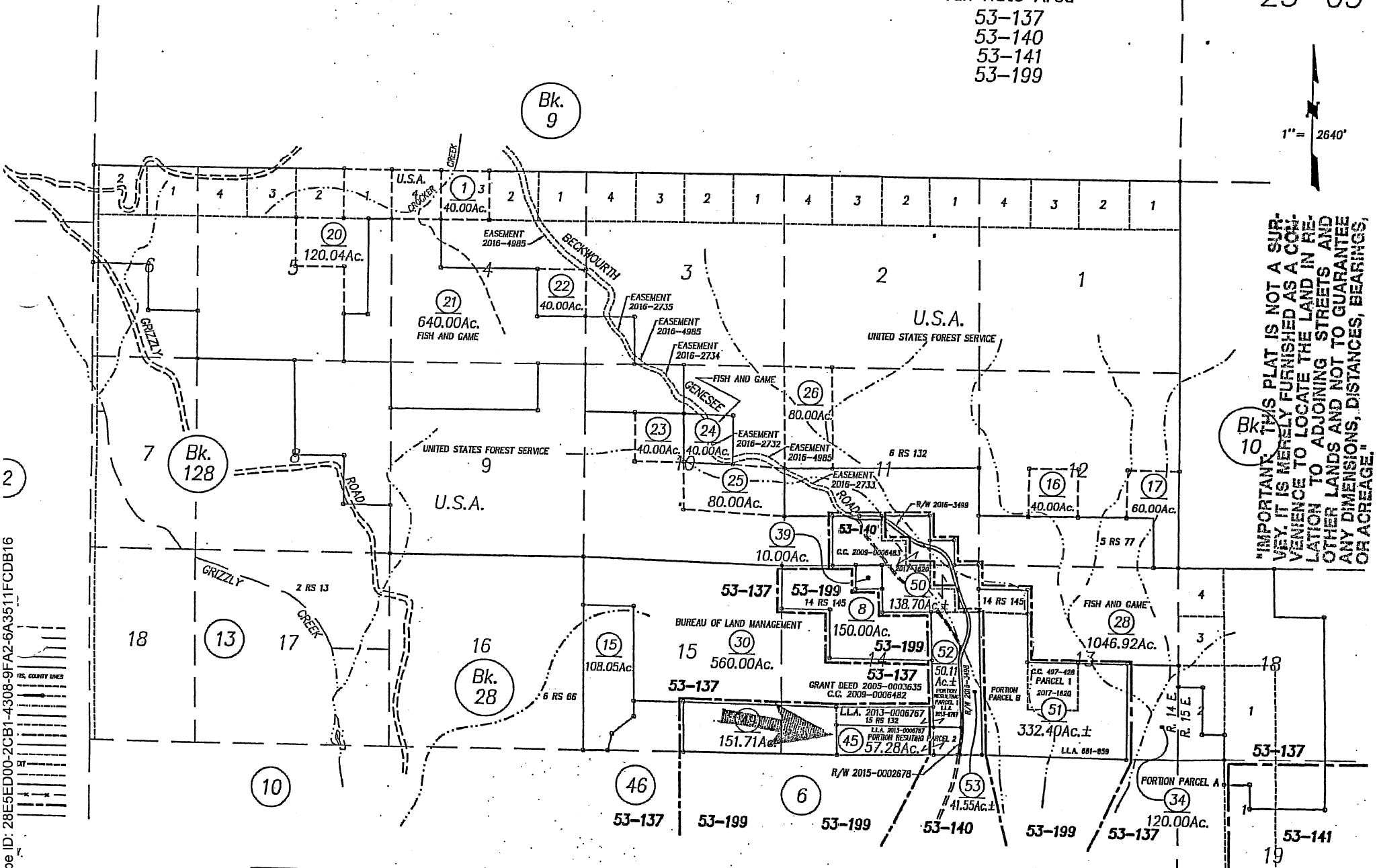


- 53-137
- 53-140
- 53-141
- 53-199

1" = 2640'

DocuSign Envelope ID: 28E5ED00-2CB1-4308-9FAZ-6A3511FCDB16

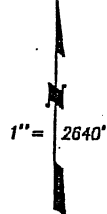
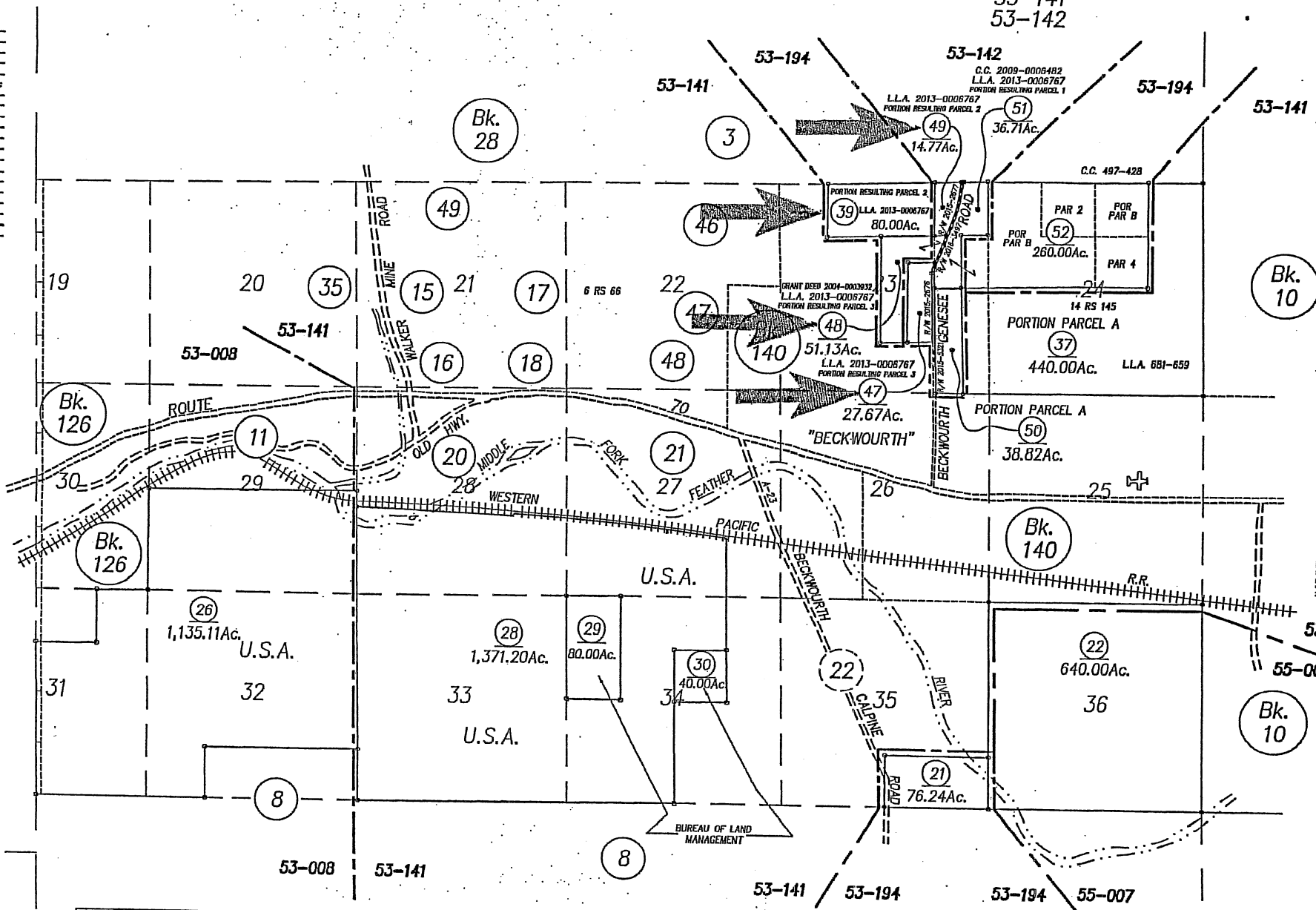
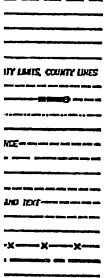


"IMPORTANT: THIS PLAT IS NOT A SURVEY. IT IS MERELY FURNISHED AS A CONVENIENCE TO LOCATE THE LAND IN RELATION TO ADJOINING STREETS AND OTHER LANDS AND NOT TO GUARANTEE ANY DIMENSIONS, DISTANCES, BEARINGS, OR ACREAGE."

NOTE: ALL INFORMATION SHOWN ON ASSESSOR PARCEL MAPS ARE FOR ASSESSOR'S OFFICE USE AND DO NOT NECESSARILY CONSTITUTE LEGAL LOTS. NO LIABILITY IS ASSUMED FOR THE ACCURACY OF THE DATA SHOWN.

Assessor's Parcel Numbers Shown in Circles. Assessor's Block Numbers Shown in Ellipses. Book 25, Page 03 Plumas County Assessor's Map

END



IMPORTANT: THIS PLAT IS NOT A SURVEY. IT IS MERELY FURNISHED AS A CONVENIENCE TO LOCATE THE LAND IN RELATION TO ADJOINING STREETS AND OTHER LANDS AND NOT TO GUARANTEE ANY DIMENSIONS, DISTANCES, BEARINGS, OR ACREAGE.

NOTE: ALL INFORMATION SHOWN ON ASSESSOR PARCEL MAPS ARE FOR ASSESSOR'S OFFICE USE AND DO NOT NECESSARILY CONSTITUTE LEGAL LOTS. NO LIABILITY IS ASSUMED FOR THE ACCURACY OF THE DATA SHOWN.

Assessor's Parcel Numbers Shown in Circles.  
Assessor's Block Numbers Shown in Ellipses.  
Book 25, Page 06  
Plumas County Assessor's Map

DocuSign Envelope ID: 28E5ED00-2CB1-4308-9FA2-6A3511FCDB16