

Latitude: N 41.144633
Longitude: W -122.31438

Driving Directions

Highway Post Mile: N/A

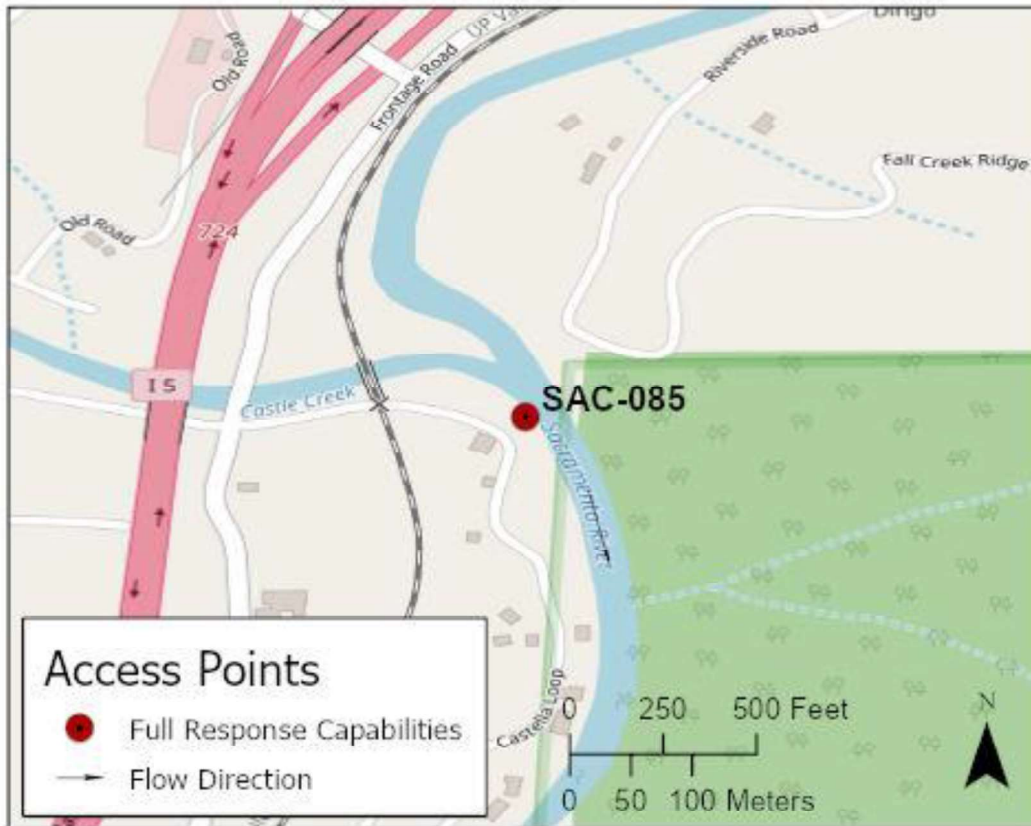
Take the Castella exit off I-5, Exit #724, and head east of the interstate. Turn south onto Main Street/Frontage Road. Immediately after crossing Castle Creek, turn east onto Castella Loop. The response site is at the point where Castella Loop turns south adjacent to the Sacramento River. Parking is available on the UPRR right-of-way on the west side of the track crossing.

Railroad Milepost: UPRR 315.82 – Valley Subdivision

Nearest Address and Thomas Guide #:
N/A

Cell Service: Yes – Verizon tested

Overview Street Map



Hazards, Restrictions and Advice for Responders

UPRR track crossing #750542D is located between Main Street/Frontage Road and the Sacramento River.

Responders need a raft or kayak to access the river-left shoreline.

Elevation at the response site is 2,020 feet above MSL.

Private residences line the river-right shoreline south of the point where Castella Loop turns south.

Resources-At-Risk

Ecological: fisher – west coast DPS, Bald Eagle, Osprey, Foothill Yellow-legged Frog, Cascades Frog, Coastal-tailed Frog

Economic: Fishing guide services

Tribal: Contact the Native American Heritage Commission at (916) 373-3710.

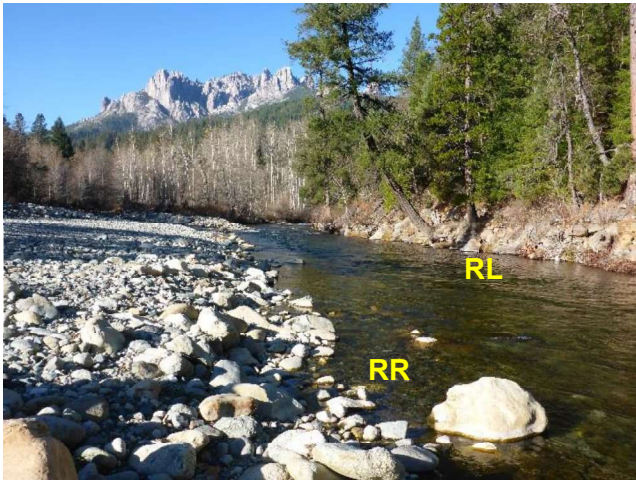
Cultural and Historic: Contact the Northeast Information Center at (530) 898-6256.

Site Description and Field Notes

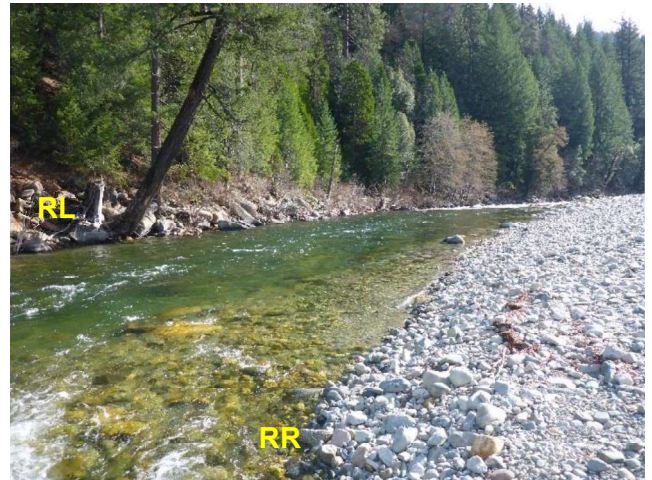
River Width: 23 meters (75 feet)
Gradient: Medium
Site Contact/s:
 Response site property is privately owned.
 UPRR RMCC
 (888) 877-7267

Site Location/Segment: SAC-SH-A-015
 Castella Loop is a very narrow road with limited parking. Work with Shasta County Public Works Department regarding equipment access. There is some parking available in the UPRR right-of-way on the west side of the track crossing. The confluence of Castle Creek and the Sacramento River is located about 75 yards upstream of the response site.
Vehicular Access: All vehicle types can access this location.
Recreational Use: Fishing, rafting/kayaking, water-contact.
Boat Launches: Use shoreline for launching rafts or kayaks. There are no boat ramps along the upper Sacramento River between Box Canyon Dam and Lake Shasta (Divisions SAC-SK-A and SAC-SH-A).
ESI Shoreline Type: Exposed rocky banks (1A); Gravel bars and gently sloping banks (6A); Vegetated, steeply sloping bluffs (8F); Vegetated low banks (9B).

Site Images



Upstream



Downstream



Straight Across

RR = River-Right RL = River-Left

Photo Date: 12/09/2017

Site Objectives: Deflection boom and product collection.

Implementation: Deploy 350 feet of swift water boom from upstream river-left shoreline to slower water along gravel bar on river-right shoreline south of Castle Creek. Use excess boom to protect shoreline at collection area. Collect product using skimmer and transfer to a vacuum truck.

Staging Area Location and Capabilities/Amenities/Waste Management: Equipment staging and waste management is available on the west side of the UPRR track crossing.

Response Strategy Map (overview)

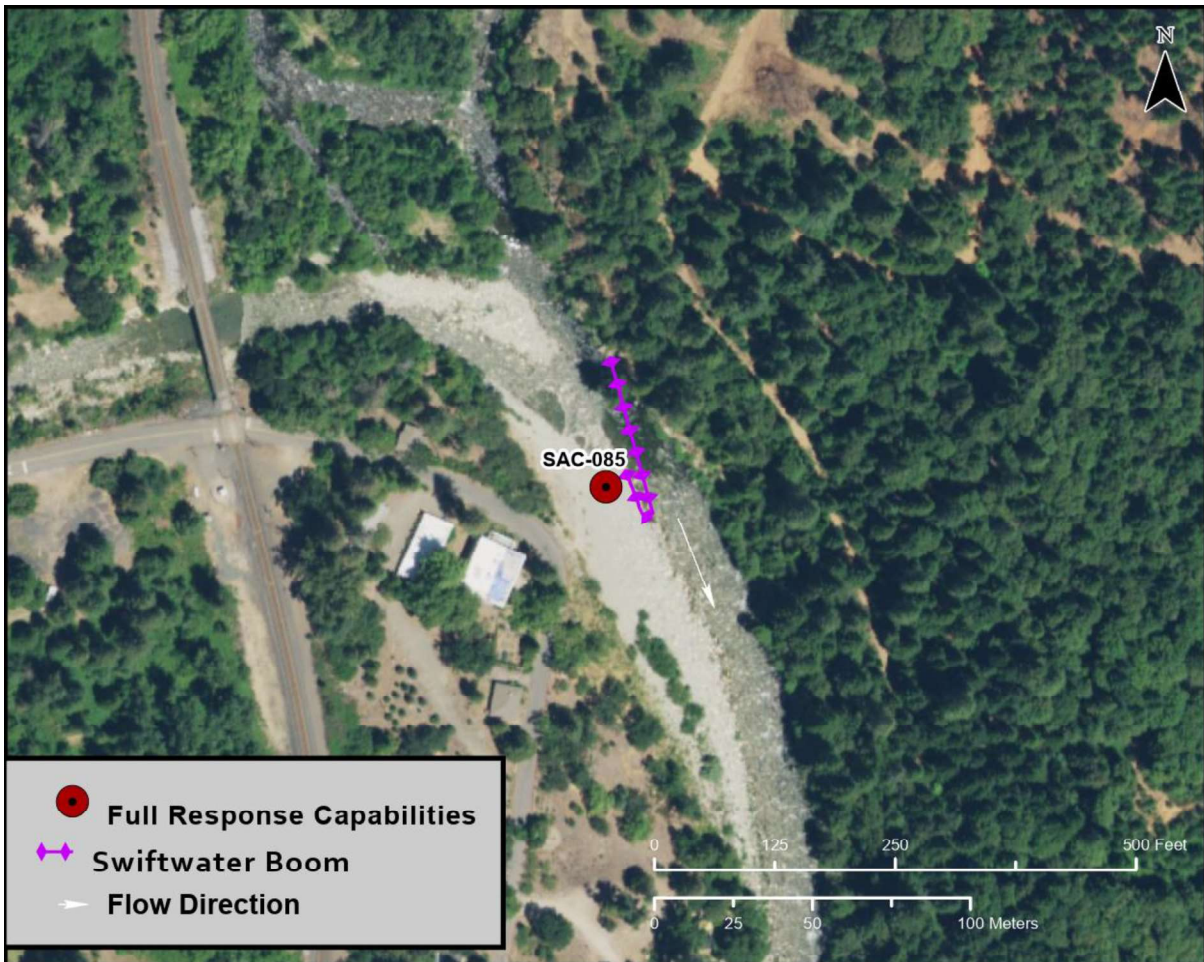


Table of Response Resources

Type	Sub-Type	Size	Unit	QTY - Unit	Special Equipment or Comments
Boom	Sorbent Boom	5 to 8	inch	600 feet	
Boom	Swift Water Boom	8 to 12	inch	350 feet	
Skimmer	Disc or Drum			1	
Storage Tank		20,000	gallon	5	
Vacuum Truck		70	bbl	1	
Pads and Sweep	Sorbent		bale	40	
Personnel				6 to 8 crew	