

Driving Directions:

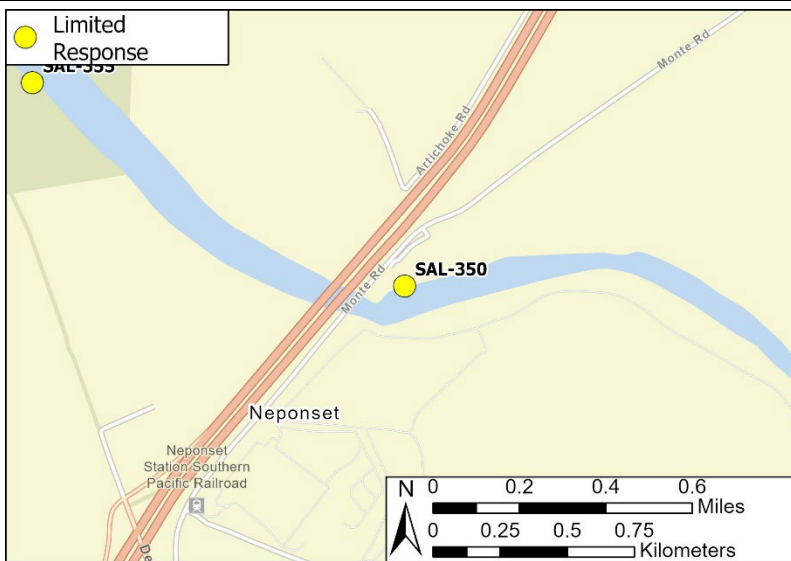
From the North (Gilroy): From Highway 101, take exit 336 to CA-156 West. Take exit 414 and turn right on Nashua Road. Take the first right onto Monte Road. After 0.9 miles, turn left onto a dirt road and follow downhill to the left beneath the railroad trestle.

From the South (Paso Robles): From Highway 101, take exit 328 to East Market Street/CA-183. Follow Market Street/Castroville Road for 5.5 miles and turn left onto Cooper Road. Turn right onto Nashua Road and left on to Monte Road. After 0.9 miles, turn left onto a dirt road and follow downhill to the left beneath the railroad trestle.

Latitude/Longitude: 36.732037, -121.780693	Highway Postmile: SH-1-PM-89.2	Railroad Milepost: N/A	Cell Service: Yes, Verizon
--	--	----------------------------------	--------------------------------------

Nearest Address: N/A, use Lat/Long above

Overview Street Map



Hazards, Restrictions and Advice for Responders

- Swift water during winter and spring flows
- Trip and fall hazards, slippery when wet
- Biological hazards (e.g., wildlife including rattlesnakes, wild boar)
- Site may be inaccessible during wet conditions

Resources-At-Risk

Ecological: American White Pelican, Western Snowy Plover, CA Ridgeway's Rail, Tricolored Black Bird, Yellow Warbler, Bald Eagle, Golden Eagle, Northern Harrier, Burrowing Owl, Short-eared Owl, White-tailed Kite, American Badger, Monterey Dusky-footed Woodrat, Ringtail, Pallid Bat, Townsend's Big-eared Bat, Western Red Bat, Western Mastiff Bat, California Red-legged Frog, California Tiger Salamander, Western Spadefoot, Coast Horned Lizard, Northern California Legless Lizard, Two-striped Garter Snake, Pond Turtle, Monterey Hitch, Steelhead, Vernal Pool Fairy Shrimp, Monarch Butterfly, Smith's Blue Butterfly, Abbott's Bush-mallow, Hutchinson's Larkspur, Pale-yellow Layia.

Economic: N/A

Tribal: Contact the Native American Heritage Commission at (916) 373-3710

Cultural and Historic: Contact the Northwest Information Center at (707) 332-1117

Site Description and Field Notes

Site Location/Segment: SAL-MT-J-020	Site Description and Field Notes: There is parking for a few vehicles under the train trestle with additional parking in the small gravel lot near Monte Road. No terrestrial access to river left.			
Gradient: Low	River Width: 89 m (292 ft)	Vehicular Access: 4WD, may be inaccessible when wet	Recreational Use: Fishing, kayaking	Boat Launches: Hand launch only
Site Contact/s:	Union Pacific Railroad (888) 877-7267			
ESI Shoreline Type:	9B - Vegetated Low Banks; 1B - Exposed Solid Man-Made Structures			

Site Images

Upstream



Downstream



Straight Across



RR = River Right RL = River Left

Photo Date: 5/19/2025

Site Objectives: Deploy boom to contain and collect oil.

Implementation: Deploy 600 feet of boom at an angle to prevent entrainment, using anchoring stakes. Oil collection will be on river right.

Staging Area Location and Capabilities/Amenities/Waste Management: Large staging area at the Salinas Sports Complex.

Response Strategy Map (overview)

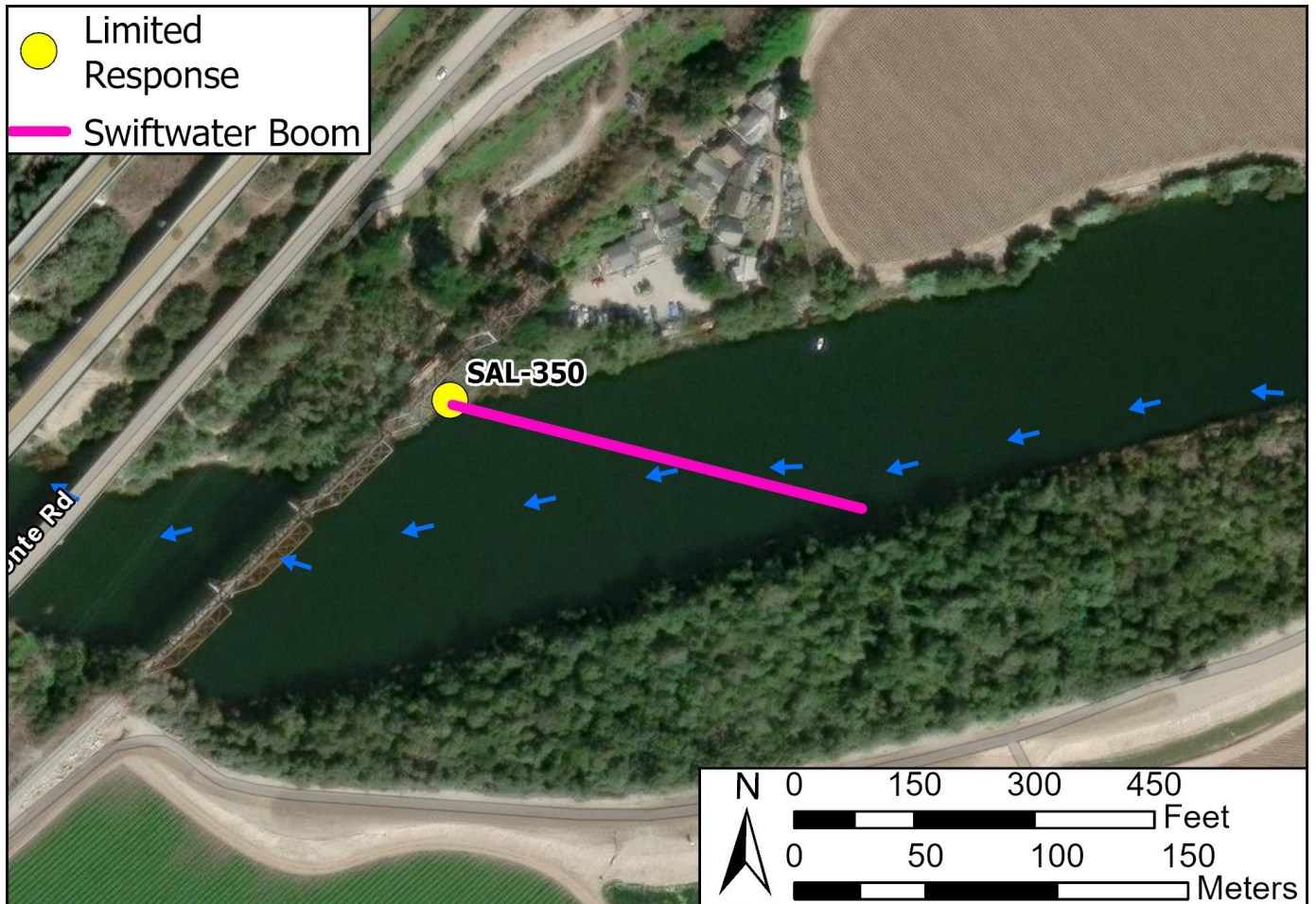


Table of Response Resources

Type	Sub-Type	Size	Unit	Quantity	Special Equipment or Comments
Boom	Swiftwater	6 in. skirt	feet	600	Booming strategy only effective during medium to low flow
Anchor	Danforth	25 lb.		2	
T-post				12	
Vessel	Small Skiff			1	Hand launch from riverbank
Personnel				8-10	