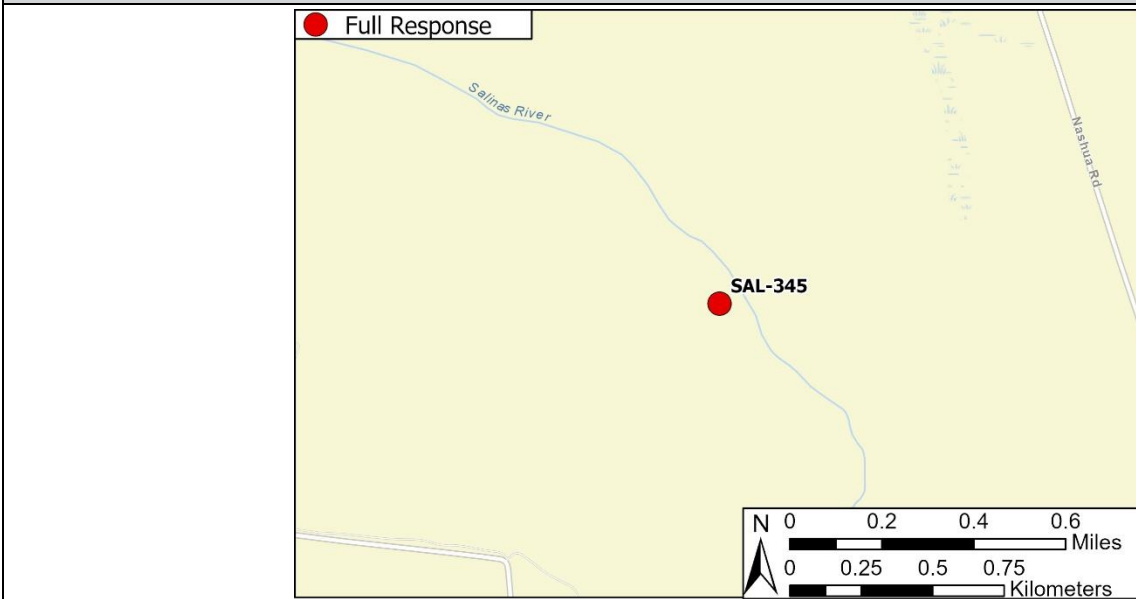


<b>Driving Directions:</b>	<b>From the North (Gilroy):</b> Follow directions to the Monterey Regional Waste Management District landfill off Highway 1. Follow Charles Benson Road loop to the north end of the waste facility. Follow the paved road down the hill to agricultural fields for 0.6 miles. Turn left onto the dirt agricultural road and follow for 0.45 miles. Turn left and follow to the gated entrance of the diversion facility.		
	<b>From the South (Paso Robles):</b> See above.		
<b>Latitude/Longitude:</b> 36.708645, -121.750842	<b>Highway Postmile:</b> SH-1-PM-88.6	<b>Railroad Milepost:</b> N/A	<b>Cell Service:</b> Yes, Verizon
<b>Nearest Address:</b> Monterey Regional Waste Management District landfill, 14201 Del Monte Boulevard, Salinas, CA 93908			

**Overview Street Map**



**Hazards, Restrictions and Advice for Responders**

- Swift water during winter and spring flows
- Trip and fall hazards, slippery when wet
- Biological hazards (e.g., wildlife including rattlesnakes, wild boar)
- Site may be inaccessible during wet conditions
- Contact Monterey County Water Resources Agency for access to locked gate
- During high flows, this is the key initial response site for contractors traveling from north region

**Resources-At-Risk**

**Ecological:** American White Pelican, Western Snowy Plover, Tricolored Black Bird, Yellow Warbler, Bald Eagle, Golden Eagle, Northern Harrier, Burrowing Owl, White-tailed Kite, American Badger, Monterey Dusky-footed Woodrat, Ringtail, Pallid Bat, Townsend’s Big-eared Bat, Western Red Bat, Western Mastiff Bat, California Red-legged Frog, California Tiger Salamander, Western Spadefoot, Coast Horned Lizard, Northern California Legless Lizard, Two-striped Garter Snake, Pond Turtle, Monterey Hitch, Steelhead, Vernal Pool Fairy Shrimp, Monarch Butterfly, Abbott’s Bush-mallow, Pale-yellow Layia.

**Economic:** Salinas River Diversion Facility

**Tribal:** Contact the Native American Heritage Commission at (916) 373-3710

**Cultural and Historic:** Contact the Northwest Information Center at (707) 332-1117

**Site Description and Field Notes**

<b>Site Location/Segment:</b> SAL-MT-J-020	<b>Site Description and Field Notes:</b> Site is located at the Salinas River Diversion Facility which includes an inflatable weir dam and permanent debris boom upstream of the dam. During high flows, this is the key initial response site for contractors traveling from north region. Access river right through agricultural fields off Nashua Road (36.709180, -121.750265).			
<b>Gradient:</b> Low	<b>River Width:</b> 49 m (161 ft)	<b>Vehicular Access:</b> All types when dry, 4WD when wet	<b>Recreational Use:</b> N/A	<b>Boat Launches:</b> Yes. Upstream and downstream of weir dam.
<b>Site Contact/s:</b>	Monterey County Water Resources Agency (831) 755-4860		After Hours (831) 883-1118	
<b>ESI Shoreline Type:</b>	9B - Vegetated Low Banks; 1B - Exposed Solid Man-Made Structures			

**Site Images**

Upstream



Downstream



Straight Across



Gate



RR = River Right RL = River Left

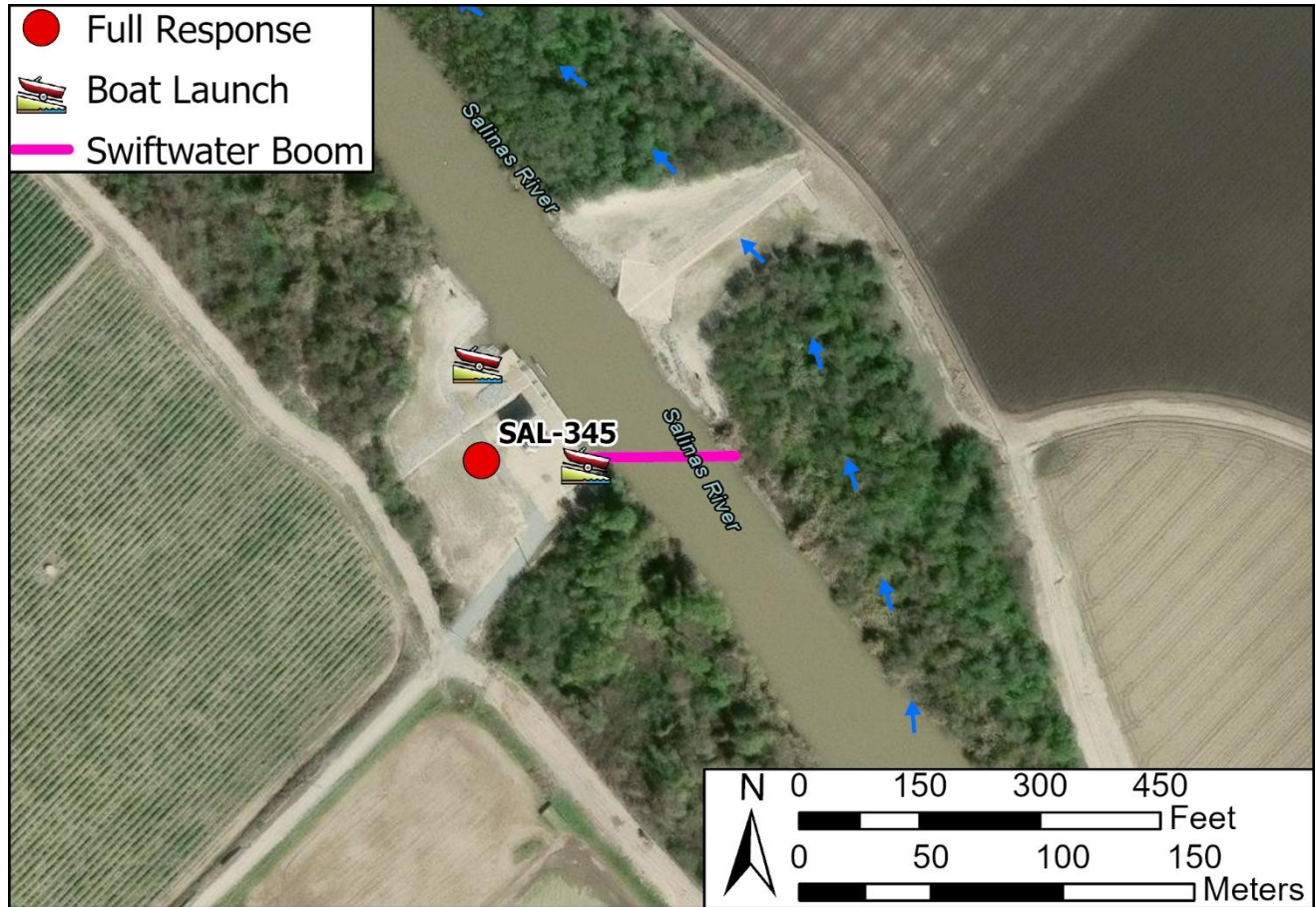
Photo Date: 10/19/2023

**Site Objectives:** Deploy boom to contain and collect oil.

**Implementation:** Deploy 250 feet of boom at an angle to prevent entrainment, using anchoring stakes. Oil collection will be on river left.

**Staging Area Location and Capabilities/Amenities/Waste Management:** Staging area at facility. No amenities or waste management. Vehicle access will be limited during wet conditions.

**Response Strategy Map (overview)**



**Table of Response Resources**

Type	Sub-Type	Size	Unit	Quantity	Special Equipment or Comments
Boom	Swiftwater	6 in. skirt	feet	250	Booming strategy only effective during medium to low flow
Anchor	Danforth	25 lb.		2	
T-post				12	
Vessel	Small Skiff			1	Hand launch from riverbank
Personnel				8-10	