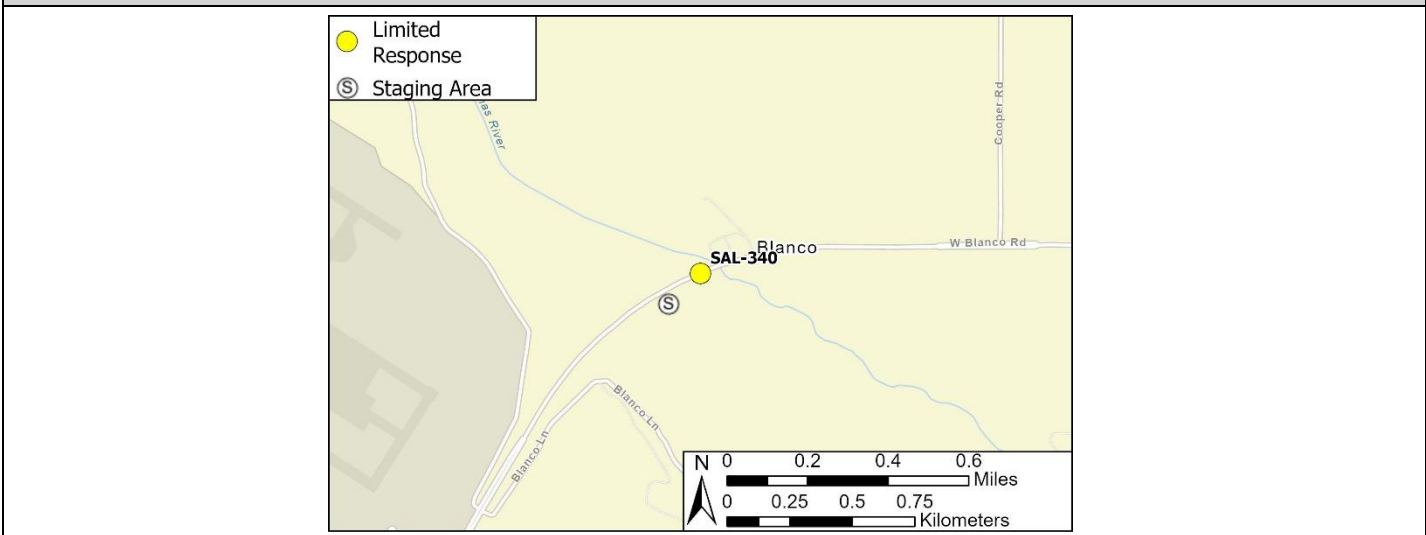


<b>Driving Directions:</b>	<p><b>From the North (Gilroy):</b> On Highway 101, take exit 330. Turn right onto West Laurel Drive. Take the first left onto North Davis Road. Turn right onto West Blanco Road, follow for 3.8 miles. Immediately after the bridge, turn right onto a dirt road. The gated lot is on the left. Once inside the gate, follow the dirt road beneath the bridge.</p> <p><b>From the South (Paso Robles):</b> On Highway 101, take exit 323 onto Abbott Street. Turn left onto East Blanco Road. Continue onto West Blanco Road, follow for 3.8 miles. Immediately after the bridge, turn right onto a dirt road. The gated lot is on the left. Once inside the gate, follow the dirt road beneath the bridge.</p>		
<b>Latitude/Longitude:</b>	<b>Highway Postmile:</b>	<b>Railroad Milepost:</b>	<b>Cell Service:</b>
36.677911, -121.745856	N/A	N/A	Yes, Verizon

**Nearest Address:** 691 West Blanco Road, Salinas, CA 93908

**Overview Street Map**



**Hazards, Restrictions and Advice for Responders**

- Swift water during winter and spring flows
- Trip and fall hazards, slippery when wet
- Biological hazards (e.g., wildlife including rattlesnakes, wild boar)
- Site may be inaccessible during wet conditions
- Contact Monterey Peninsula Engineering for access
- See the database for the gate code

**Resources-At-Risk**

**Ecological:** American White Pelican, Western Snowy Plover, Tricolored Black Bird, Yellow Warbler, Bald Eagle, Golden Eagle, Northern Harrier, Burrowing Owl, White-tailed Kite, American Badger, Monterey Dusky-footed Woodrat, Ringtail, Pallid Bat, Townsend's Big-eared Bat, Western Red Bat, Western Mastiff Bat, California Red-legged Frog, California Tiger Salamander, Western Spadefoot, Coast Horned Lizard, Northern California Legless Lizard, Two-striped Garter Snake, Pond Turtle, Monterey Hitch, Steelhead, Vernal Pool Fairy Shrimp, Monarch Butterfly, Abbott's Bush-mallow, Pale-yellow Layia.

**Economic:** N/A

**Tribal:** Contact the Native American Heritage Commission at (916) 373-3710

**Cultural and Historic:** Contact the Northwest Information Center at (707) 332-1117

**Site Description and Field Notes**

**Site Location/Segment:** SAL-MT-J-010  
**Site Description and Field Notes:** This site is accessed through Monterey Peninsula Engineering property, which is gated. Follow the dirt road beneath the bridge. The dirt road is 200 feet from the riverbank which can be accessed by a foot path. There is overgrown vegetation underneath the bridge, including blackberry.

<b>Gradient:</b> Low	<b>River Width:</b> 34 m (110 ft)	<b>Vehicular Access:</b> 4WD, may be inaccessible when wet	<b>Recreational Use:</b> N/A	<b>Boat Launches:</b> Hand launch only
-------------------------	--------------------------------------	---	---------------------------------	---

<b>Site Contact/s:</b>	Monterey Peninsula Engineering (831) 384-4081	After Hours – See Database
------------------------	--	----------------------------

**ESI Shoreline Type:** 9B - Vegetated Low Banks; 1B - Exposed Man-Made Structures

**Site Images**

Upstream



Downstream



Straight Across



Gate



**RR = River Right RL = River Left**

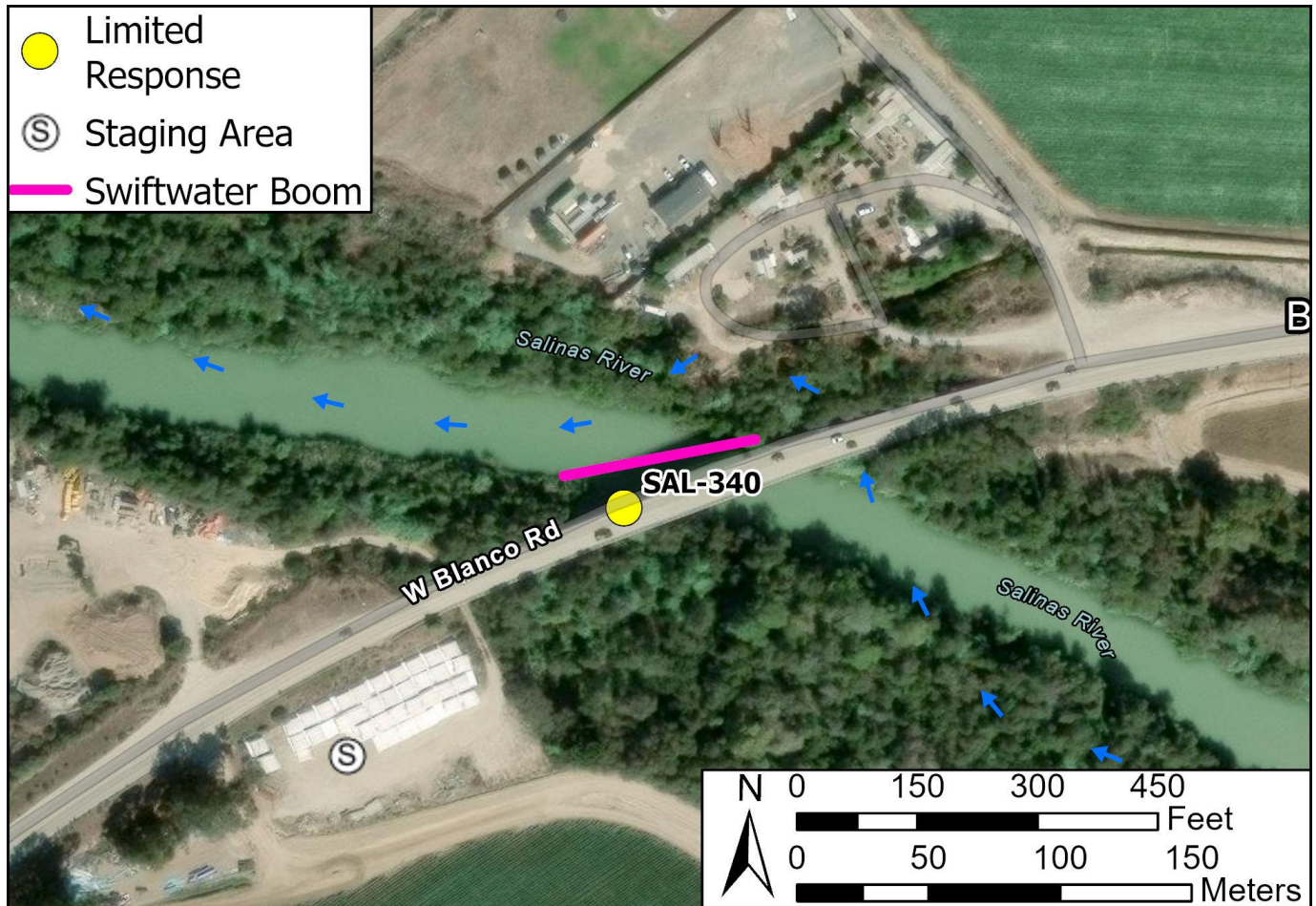
**Photo Date: 06/05/2025**

**Site Objectives:** Deploy boom to contain and collect oil.

**Implementation:** Deploy 200 feet of boom at an angle to prevent entrainment, using anchoring stakes. Oil collection will be on river left.

**Staging Area Location and Capabilities/Amenities/Waste Management:** The fenced, gravel lot adjacent to Blanco Road may be available for equipment staging.

**Response Strategy Map (overview)**



**Table of Response Resources**

Type	Sub-Type	Size	Unit	Quantity	Special Equipment or Comments
Boom	Swiftwater	6 in. skirt	feet	200	Booming strategy only effective during medium to low flow
Anchor	Danforth	25 lb.		2	
T-post				12	
Vessel	Small Skiff			1	Hand launch from riverbank
Personnel				8-10	