

Driving Directions:

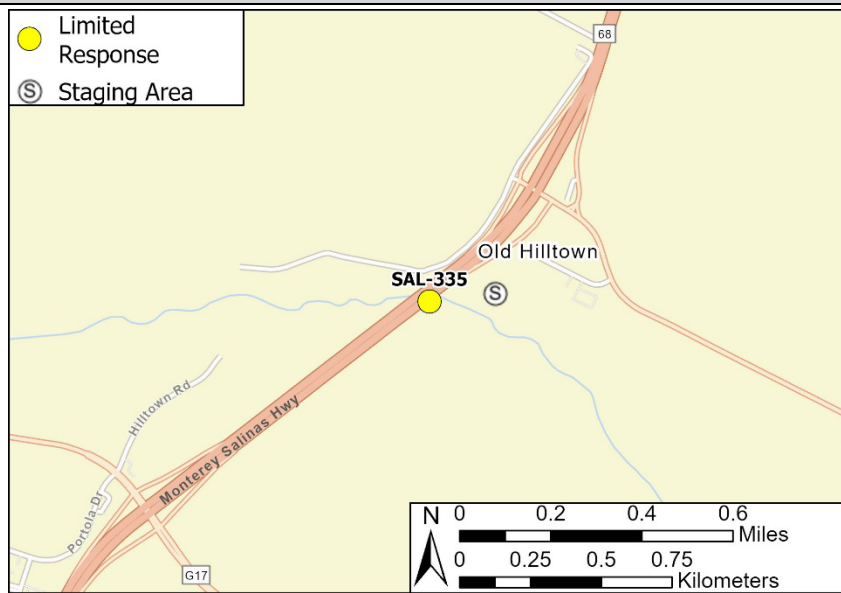
From the North (Gilroy): On Highway 101, take exit 327. Turn right onto John Street. Turn left onto South Main Street. Continue onto CA-68 West. Take exit 21. Turn left onto Spreckels Boulevard. Take the first right onto Spreckels Lane. Turn left at the end of the cul-de-sac into the gated lot.

From the South (Paso Robles): On Highway 101, take exit 323 onto Abbott Street. Turn left onto Harris Road. Continue on Spreckels Boulevard. Turn left onto Spreckels Lane. Turn left at the end of the cul-de-sac into the gated lot.

Latitude/Longitude: 36.630072, -121.672809	Highway Postmile: SH-68-PM-17.8	Railroad Milepost: N/A	Cell Service: Yes, Verizon
--	---	----------------------------------	--------------------------------------

Nearest Address: 2 Spreckels Lane, Salinas, CA 93908

Overview Street Map



Hazards, Restrictions and Advice for Responders

- Swift water during winter and spring flows
- Trip and fall hazards, slippery when wet
- Biological hazards (e.g., wildlife including rattlesnakes, wild boar)
- Site may be inaccessible during wet conditions
- Contact Brett George Construction for access

Resources-At-Risk

Ecological: American White Pelican, Western Snowy Plover, Tricolored Black Bird, Yellow Warbler, Bald Eagle, Golden Eagle, Northern Harrier, Burrowing Owl, White-tailed Kite, American Badger, Monterey Dusky-footed Woodrat, Ringtail, Pallid Bat, Townsend's Big-eared Bat, Western Red Bat, Western Mastiff Bat, California Red-legged Frog, California Tiger Salamander, Western Spadefoot, Coast Horned Lizard, Northern California Legless Lizard, Two-striped Garter Snake, Pond Turtle, Monterey Hitch, Steelhead, Vernal Pool Fairy Shrimp, Monarch Butterfly, Abbott's Bush-mallow, Pale-yellow Layia.

Economic: N/A

Tribal: Contact the Native American Heritage Commission at (916) 373-3710

Cultural and Historic: Contact the Northwest Information Center at (707) 332-1117

Site Description and Field Notes

Site Location/Segment: SAL-MT-I-025	Site Description and Field Notes: This site is accessed through the Brett George Construction Co. property, which is gated. There is a dirt two-track trail at the northwest end of the fenced gravel storage lot that leads to the bridge. The riverbank may have a three- to four-foot drop off to the water.			
Gradient: Low	River Width: 37 m (122 ft)	Vehicular Access: 4WD, may be inaccessible when wet	Recreational Use: Fishing	Boat Launches: Hand launch only
Site Contact/s:	Brett George Construction Co. (831) 998-7686		After Hours – See Database	
ESI Shoreline Type:	9B - Vegetated Low Banks; 1B - Exposed Man-Made Structures			

Site Images

Upstream



Downstream



Straight Across



Two-Track Access



RR = River Right RL = River Left

Photo Date: 06/05/2025

Site Objectives: Deploy boom to contain and collect oil.

Implementation: Deploy 200 feet of boom at an angle to prevent entrainment, using anchoring stakes. Oil collection will be on river right.

Staging Area Location and Capabilities/Amenities/Waste Management: Equipment may be staged at the fenced gravel lot behind the buildings.

Response Strategy Map (overview)

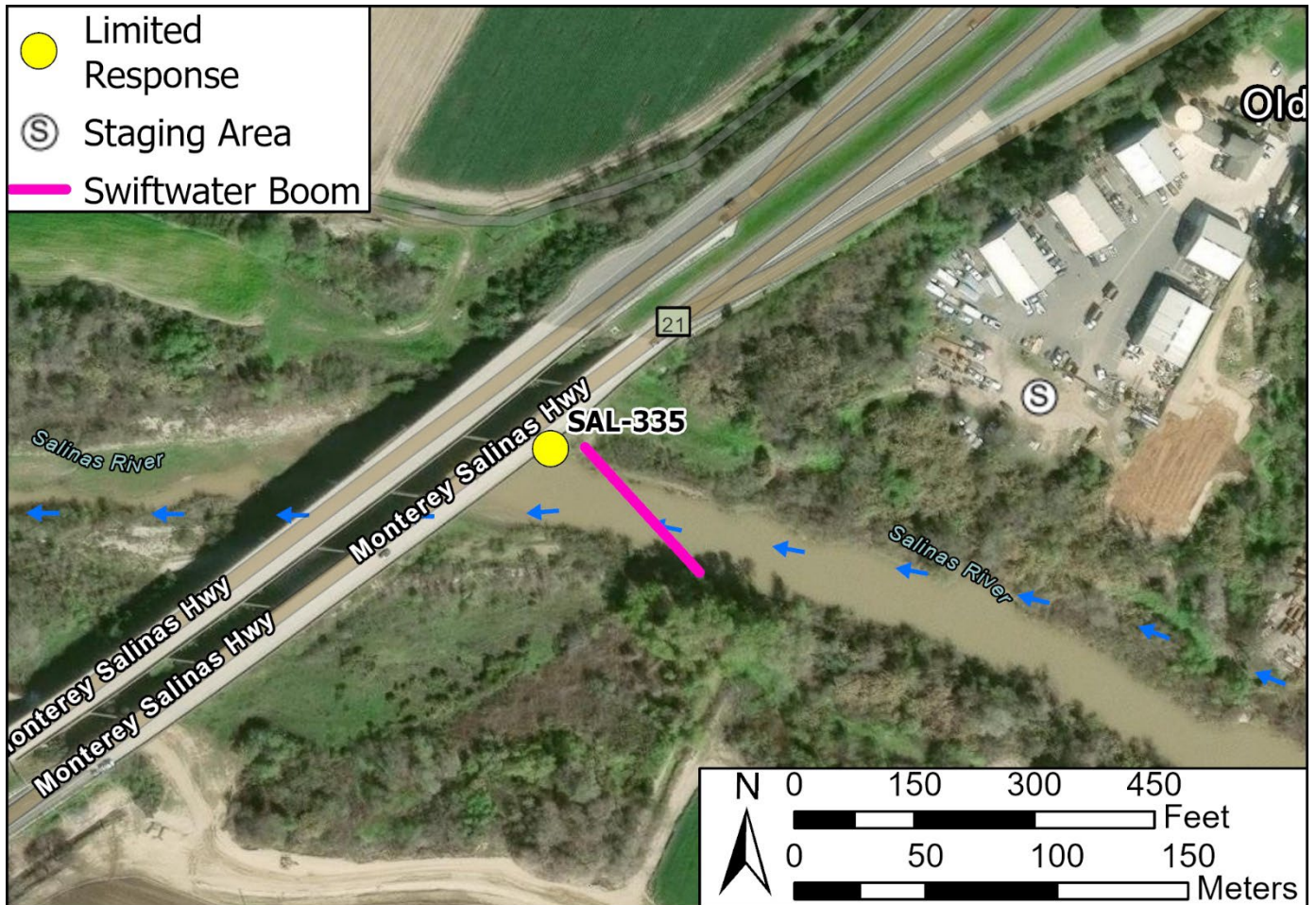


Table of Response Resources

Type	Sub-Type	Size	Unit	Quantity	Special Equipment or Comments
Boom	Swiftwater	6 in. skirt	feet	200	Booming strategy only effective during medium to low flow
Anchor	Danforth	25 lb.		2	
T-post				12	
Vessel	Small Skiff			1	Hand launch from riverbank
Personnel				8-10	