

Driving Directions:

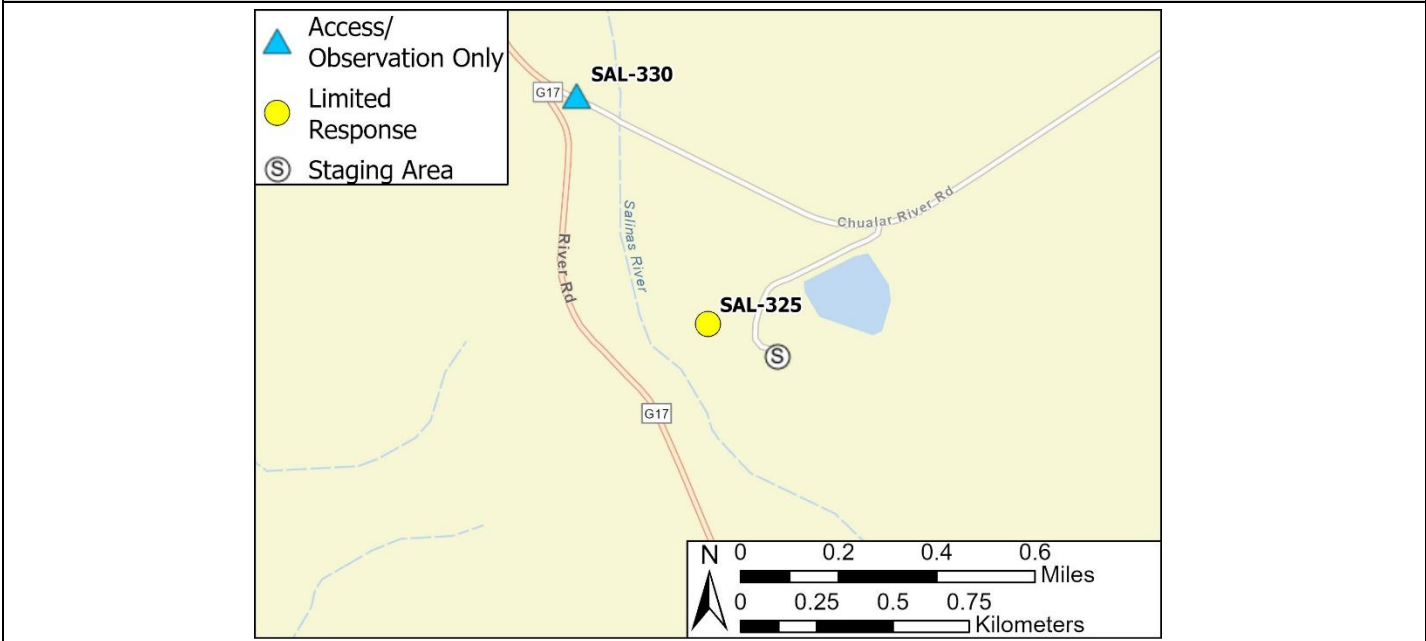
From the North (Salinas): On Highway 101, take exit 317. Turn right onto Chualar River Road. Take the first right to stay on Chualar River Road, follow for 1.6 miles. Turn left onto Chualar Dump Road. Access through locked gate.

From the South (Paso Robles): On Highway 101, take exit 317. Continue straight onto Grant Street. Turn left onto Chualar River Road. Take the first right to stay on Chualar River Road and follow for 1.6 miles. Turn left onto Chualar Dump Road. Access through locked gate.

Latitude/Longitude: 36.550702, -121.545444	Highway Postmile: N/A	Railroad Milepost: N/A	Cell Service: Yes, Verizon
--	---------------------------------	----------------------------------	--------------------------------------

Nearest Address: 24200 Chualar Dump Road, Chualar, CA 93925

Overview Street Map



Hazards, Restrictions and Advice for Responders

- Swift water during winter and spring flows
- Trip and fall hazards, slippery when wet
- Biological hazards (e.g., wildlife including rattlesnakes, wild boar)
- Site may be inaccessible during wet conditions
- Contact Salinas Area Modelers for access

Resources-At-Risk

Ecological: American White Pelican, Tricolored Black Bird, Yellow Warbler, Bald Eagle, Golden Eagle, Northern Harrier, Burrowing Owl, White-tailed Kite, American Badger, Monterey Dusky-footed Woodrat, Ringtail, Pallid Bat, Townsend's Big-eared Bat, Western Red Bat, Western Mastiff Bat, California Red-legged Frog, California Tiger Salamander, Western Spadefoot, Coast Horned Lizard, Northern California Legless Lizard, Two-striped Garter Snake, Pond Turtle, Monterey Hitch, Steelhead, Vernal Pool Fairy Shrimp, Monarch Butterfly, Abbott's Bush-mallow, Pale-yellow Layia

Economic: N/A

Tribal: Contact the Native American Heritage Commission at (916) 373-3710

Cultural and Historic: Contact the Northwest Information Center at (707) 332-1117

Site Description and Field Notes

Site Location/Segment: SAL-MT-H-015	Site Description and Field Notes: This site is accessed through the Salinas Area Modelers property. Approximately 440 feet after the gate, follow the dirt two-track that runs to the right (north) of the gravel driveway. There is deep sand midway to the riverbank and no space to turn around.			
Gradient: Low	River Width: 15 m (50 ft)	Vehicular Access: 4WD, may be inaccessible when wet	Recreational Use: Fishing	Boat Launches: Hand launch only
Site Contact/s:	Salinas Area Modelers President – See Database			
ESI Shoreline Type:	9B - Vegetated Low Banks			

Site Images

Upstream



Downstream



Straight Across



Two-Track Access



RR = River Right RL = River Left

Photo Date: 06/05/2025

Site Objectives: Deploy boom to contain and collect oil.

Implementation: Deploy 100 feet of boom at an angle to prevent entrainment, using anchoring stakes. Oil collection will be on river right.

Staging Area Location and Capabilities/Amenities/Waste Management: The gravel lot at Salinas Area Modelers is available for equipment staging. Three portable toilets are available on site. The airstrip may be used for sUAS operations.

Response Strategy Map (overview)

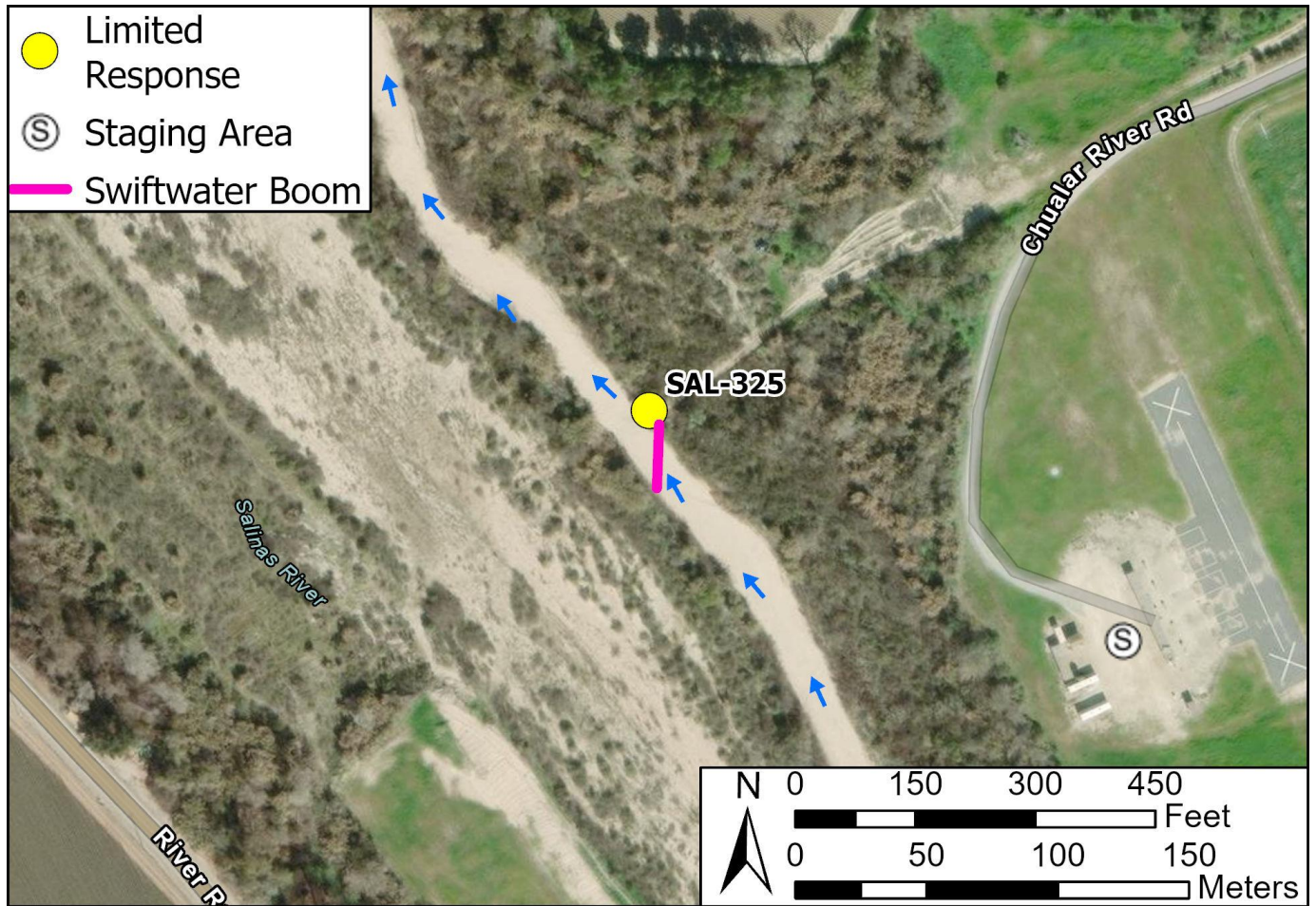


Table of Response Resources

Type	Sub-Type	Size	Unit	Quantity	Special Equipment or Comments
Boom	Swiftwater	6 in. skirt	feet	100	Booming strategy only effective during medium to low flow
Anchor	Danforth	25 lb.		2	
T-post				12	
Vessel	Small Skiff			1	Hand launch from riverbank
Personnel				8-10	