

Driving Directions:

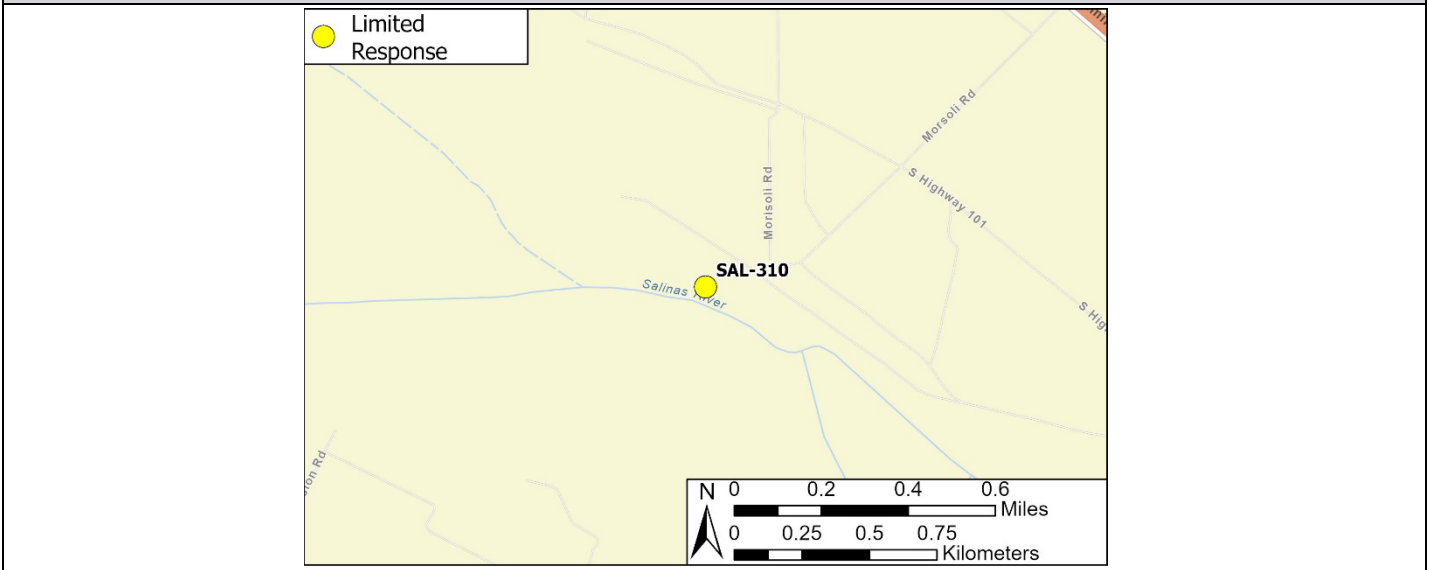
From the North (Salinas): On Highway 101, take exit 302. Take an immediate left onto Morisoli Road, and follow to the Soledad Wastewater Treatment Facility. Check in at the facility office.

From the South (Paso Robles): On Highway 101, take exit 302. Continue straight onto Front Street. Turn left at the next traffic light onto Highway 146 and continue straight over the overpass. Take an immediate right onto Morisoli Road, and follow to the Soledad Wastewater Treatment Facility. Check in at the facility office.

Latitude/Longitude: 36.417571, -121.342165	Highway Postmile: US-101-PM-62.1	Railroad Milepost: N/A	Cell Service: Yes, Verizon
--	--	----------------------------------	--------------------------------------

Nearest Address: 34520 Morisoli Road, Soledad, CA 93960

Overview Street Map



Hazards, Restrictions and Advice for Responders

- Swift water during winter and spring flows
- Trip and fall hazards, slippery when wet
- Biological hazards (e.g., wildlife including rattlesnakes, wild boar)
- Site may be inaccessible during wet conditions
- Contact Soledad Wastewater Treatment Facility for access

Resources-At-Risk

Ecological: Tricolored Black Bird, Yellow Warbler, Bank Swallow, Bald Eagle, Golden Eagle, Northern Harrier, Burrowing Owl, White-tailed Kite, American Badger, Monterey Dusky-footed Woodrat, Salinas Pocket Mouse, San Joaquin Kit Fox, Ringtail, Pallid Bat, Townsend's Big-eared Bat, Western Red Bat, Western Mastiff Bat, California Red-legged Frog, California Tiger Salamander, Western Spadefoot, Coast Horned Lizard, Northern California Legless Lizard, Two-striped Garter Snake, Pond Turtle, Monterey Hitch, Steelhead, Vernal Pool Fairy Shrimp, Monarch Butterfly, Abbott's Bush-mallow, Pale-yellow Layia.

Economic: Soledad Wastewater Treatment Facility

Tribal: Contact the Native American Heritage Commission at (916) 373-3710

Cultural and Historic: Contact the Northwest Information Center at (707) 332-1117

Site Description and Field Notes

Site Location/Segment: SAL-MT-F-015	Site Description and Field Notes: This site is accessed through the Soledad Wastewater Treatment Facility. Follow the road to the left of the facility office. Limited parking is available near the riverbank access (36.419246, -121.342805). Walk down the levy embankment to the river channel. The river channel location varies.			
Gradient: Low	River Width: 49 m (161 ft)	Vehicular Access: No	Recreational Use: No	Boat Launches: Hand launch only
Site Contact/s:	Soledad Wastewater Treatment Facility – Business Hours (831) 223-5000	Soledad Wastewater Treatment Facility – After Hours (831) 223-5050		
ESI Shoreline Type:	9B - Vegetated Low Banks			

Site Images

Upstream



Downstream



Straight Across



Facility Access



RR = River Right RL = River Left

Photo Date: 10/19/2023

Site Objectives: Deploy boom to contain and collect oil.

Implementation: Deploy 600 feet of boom at an angle to prevent entrainment, using anchoring stakes. Oil collection will be on river right.

Staging Area Location and Capabilities/Amenities/Waste Management: N/A

Response Strategy Map (overview)

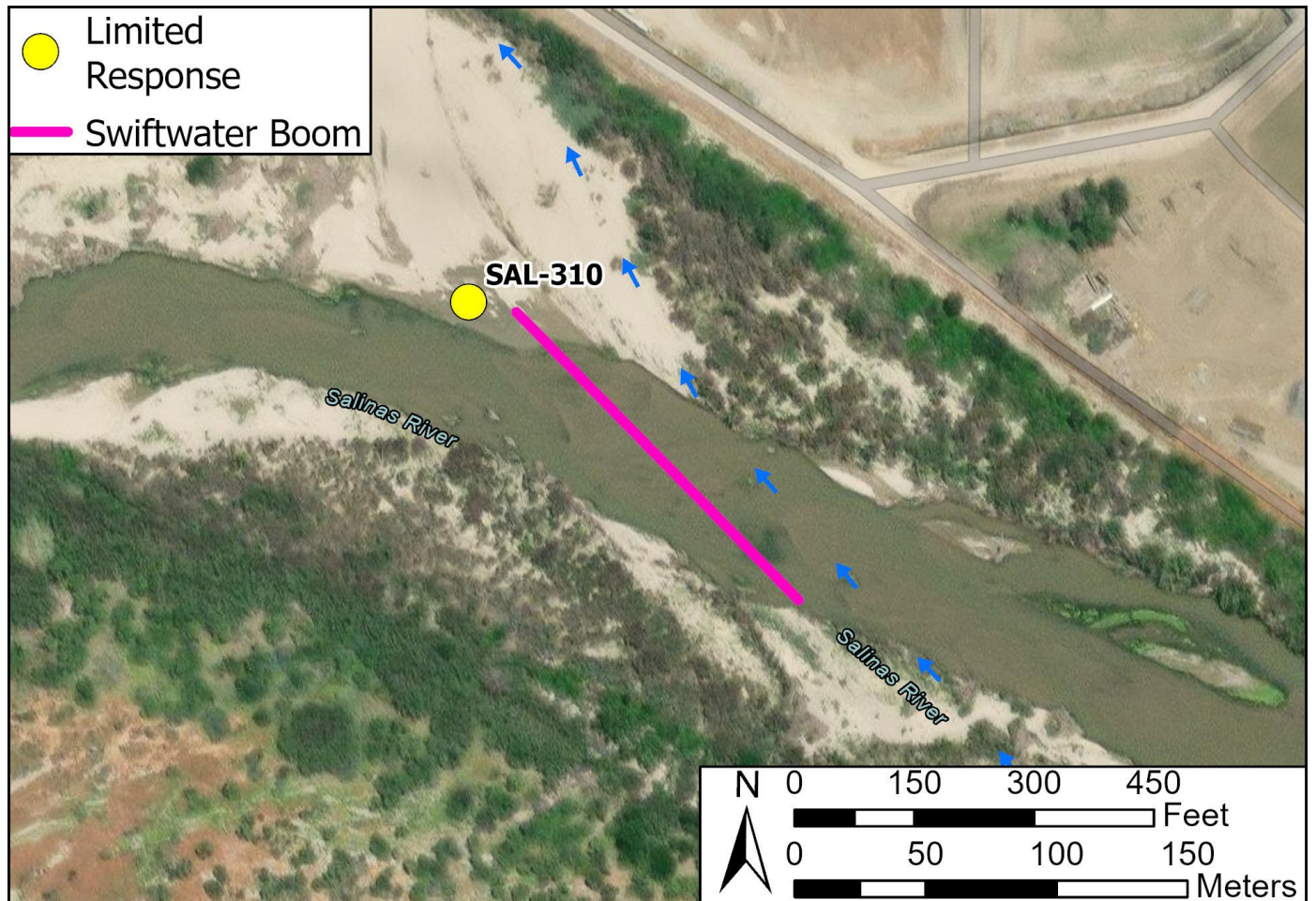


Table of Response Resources

Type	Sub-Type	Size	Unit	Quantity	Special Equipment or Comments
Boom	Swiftwater	6 in. skirt	feet	600	Booming strategy only effective during medium to low flow
Anchor	Danforth	25 lb.		2	
T-post				12	
Vessel	Small Skiff			1	Hand launch from riverbank
Personnel				8-10	