

**Driving Directions:**

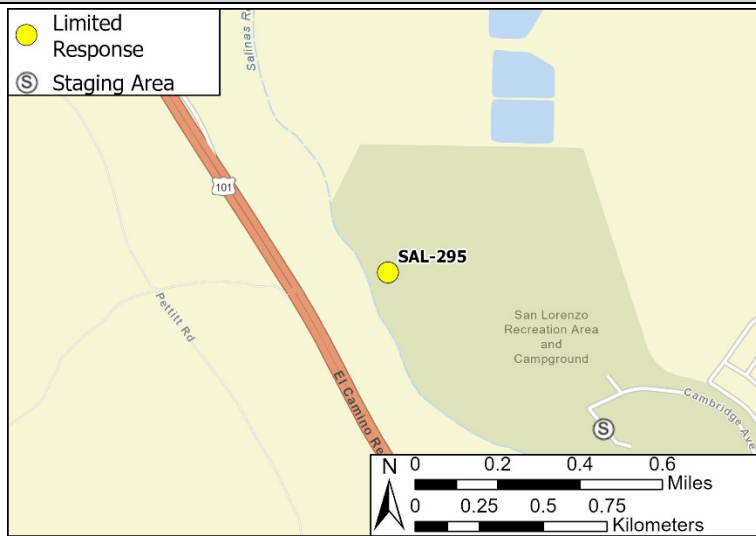
**From the North (Salinas):** On Highway 101, take exit 282B. Follow the right fork to Broadway Street. Turn left at second traffic light to stay on Broadway Street. Continue into San Lorenzo County Park to large parking area and trail entrance (36.206961, -121.151154). Follow dirt two-track trail north for 0.5 miles.

**From the South (Paso Robles):** On Highway 101, take exit 282B. Turn right onto Broadway Street. Immediately turn left at next traffic light to stay on Broadway Street. Continue into San Lorenzo County Park to large parking area and trail entrance (36.206961, -121.151154). Follow dirt two-track trail north for 0.5 miles.

<b>Latitude/Longitude:</b> 36.210565, -121.157860	<b>Highway Postmile:</b> US-101-PM-43.9	<b>Railroad Milepost:</b> N/A	<b>Cell Service:</b> Yes, Verizon
--	--	----------------------------------	--------------------------------------

**Nearest Address:** 1160 Broadway Street, King City, CA 93930

**Overview Street Map**



**Hazards, Restrictions and Advice for Responders**

- Swift water during winter and spring flows
- Trip and fall hazards, slippery when wet
- Biological hazards (e.g., wildlife including rattlesnakes, wild boar)
- Site may be inaccessible during wet conditions
- San Lorenzo County Park gate open at 8:00 am and locked at sunset. Contact county parks for access.

**Resources-At-Risk**

**Ecological:** Tricolored Black Bird, Yellow Warbler, Bank Swallow Bald Eagle, Golden Eagle, Northern Harrier, Burrowing Owl, White-tailed Kite, California Condor, Mountain Lion, American Badger, Monterey Dusky-footed Woodrat, Salinas Pocket Mouse, San Joaquin Kit Fox, Ringtail, Pallid Bat, Townsend’s Big-eared Bat, Western Red Bat, Western Mastiff Bat, California Red-legged Frog, California Tiger Salamander, Western Spadefoot, Coast Horned Lizard, Northern California Legless Lizard, San Joaquin Coachwhip, Two-striped Garter Snake, Pond Turtle, Monterey Hitch, Steelhead, Vernal Pool Fairy Shrimp, Monarch Butterfly, Abbott’s Bush-mallow, Indian Valley Bush-mallow, Pale-yellow Layia.

**Economic:** San Lorenzo County Park

**Tribal:** Contact the Native American Heritage Commission at (916) 373-3710

**Cultural and Historic:** Contact the Northwest Information Center at (707) 332-1117

**Site Description and Field Notes**

<b>Site Location/Segment:</b> SAL-MT-D-015	<b>Site Description and Field Notes:</b> This site is accessed through San Lorenzo County Park via a gated two-track dirt trail. Park hours are 8:00am to sunset. Contact San Lorenzo County Park for gate access and staging. No terrestrial access to river left.			
<b>Gradient:</b> Low	<b>River Width:</b> 65 m (213 ft)	<b>Vehicular Access:</b> 4WD, may be inaccessible when wet	<b>Recreational Use:</b> Hiking, fishing, rafting, water contact	<b>Boat Launches:</b> Hand launch only
<b>Site Contact/s:</b>	San Lorenzo County Park (831) 386-0965			
<b>ESI Shoreline Type:</b>	9B - Vegetated Low Banks			

**Site Images**

Upstream



Downstream



Straight Across



Trail Access



RR = River Right RL = River Left

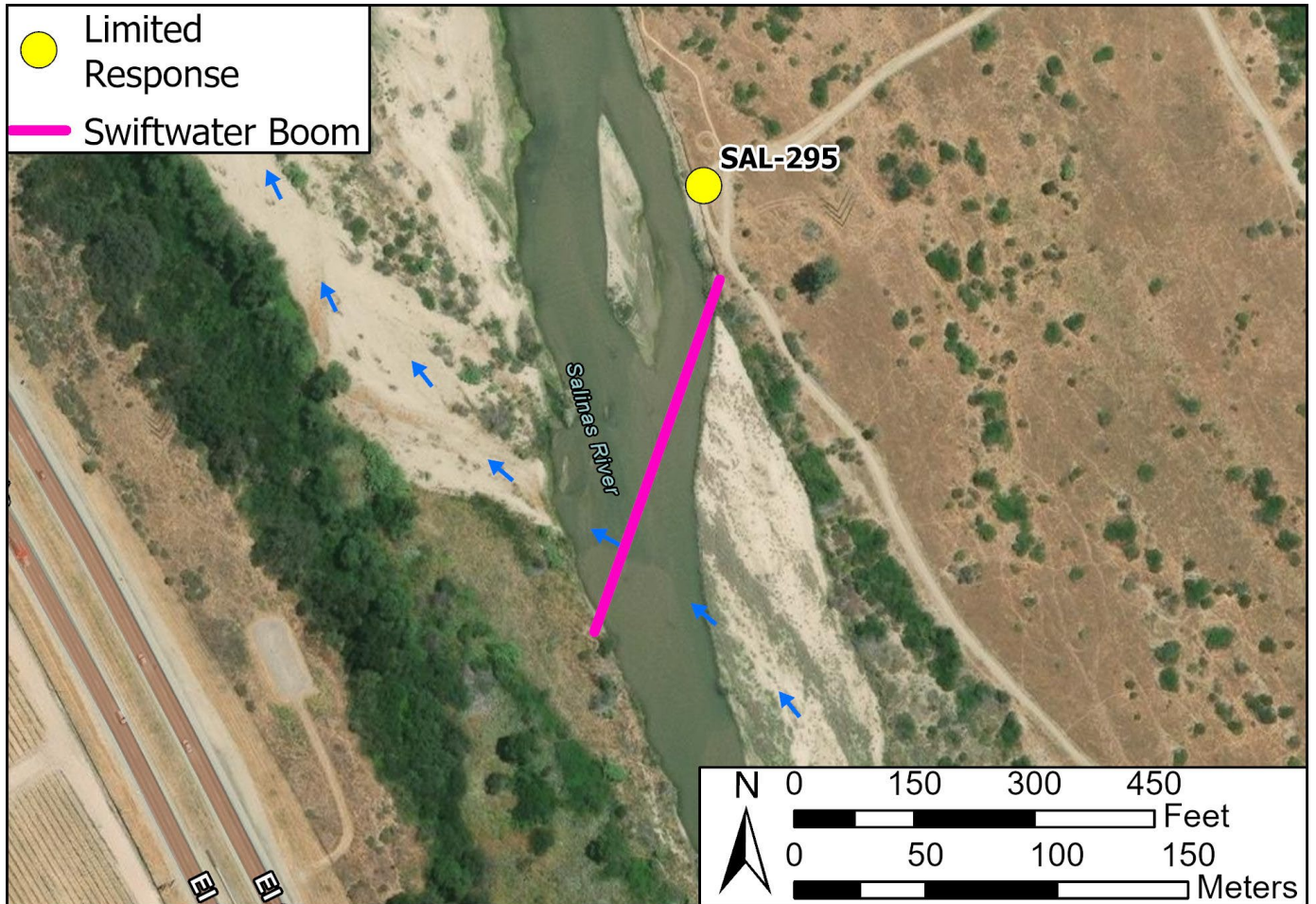
Photo Date: 4/16/2024

**Site Objectives:** Deploy boom to contain and collect oil.

**Implementation:** Deploy 600 feet of boom at an angle to prevent entrainment, using anchoring stakes. Oil collection will be on river right.

**Staging Area Location and Capabilities/Amenities/Waste Management:** Staging area at San Lorenzo County Park near trail entrance (36.206961, -121.151154).

**Response Strategy Map (overview)**



**Table of Response Resources**

Type	Sub-Type	Size	Unit	Quantity	Special Equipment or Comments
Boom	Swiftwater	6 in. skirt	feet	600	Booming strategy only effective during medium to low flow
Anchor	Danforth	25 lb.		2	
T-post				12	
Vessel	Small Skiff			1	Hand launch from riverbank
Personnel				8-10	