

Driving Directions:	<p>From the North (Salinas): On Highway 101, take exit 283. Turn left onto Jolon Road. Turn right immediately after the second Highway 101 underpass at the gated dirt road. Continue straight approximately 0.5 miles beneath highway bridge.</p> <p>From the South (Paso Robles): On Highway 101, take exit 283 which becomes Jolon Road. Turn left onto a gated dirt road immediately before the Highway 101 overpass. Continue straight approximately 0.5 miles beneath highway bridge.</p>		
Latitude/Longitude: 36.203451, -121.141883	Highway Postmile: US-101-PM-41.4	Railroad Milepost: N/A	Cell Service: Yes, Verizon

Nearest Address: N/A, use Lat/Long above

Overview Street Map



Hazards, Restrictions and Advice for Responders

- Swift water during winter and spring flows
- Trip and fall hazards, slippery when wet
- Biological hazards (e.g., wildlife including rattlesnakes, wild boar)
- Site may be inaccessible during wet conditions
- Area beneath Highway 101 bridge on river left is a habitat restoration site. Utilize two-track dirt road for ingress and egress. Consult Caltrans staff prior to staging equipment.

Resources-At-Risk

Ecological: Tricolored Black Bird, Yellow Warbler, Bank Swallow, Bald Eagle, Golden Eagle, Northern Harrier, Burrowing Owl, White-tailed Kite, California Condor, Mountain Lion, American Badger, Monterey Dusky-footed Woodrat, Salinas Pocket Mouse, San Joaquin Kit Fox, Ringtail, Pallid Bat, Townsend’s Big-eared Bat, Western Red Bat, Western Mastiff Bat, California Red-legged Frog, California Tiger Salamander, Western Spadefoot, Coast Horned Lizard, Northern California Legless Lizard, San Joaquin Coachwhip, Two-striped Garter Snake, Pond Turtle, Monterey Hitch, Steelhead, Vernal Pool Fairy Shrimp, Monarch Butterfly, Abbott’s Bush-mallow, Pale-yellow Layia.

Economic: San Lorenzo County Park

Tribal: Contact the Native American Heritage Commission at (916) 373-3710

Cultural and Historic: Contact the Northwest Information Center at (707) 332-1117

Site Description and Field Notes

Site Location/Segment: SAL-MT-D-015	Site Description and Field Notes: Site is located between the Highway 101 bridge and pedestrian bridge at San Lorenzo County Park at King City. River right bank is steep and has dense vegetation. Equipment staging beneath the Highway 101 bridge on river left. Contact Caltrans for gate access and staging location. Access river right at Broadway Street/San Lorenzo Park Road (36.203836, -121.141075) beneath Highway 101 northbound bridge.			
Gradient: Low	River Width: 46 m (151 ft)	Vehicular Access: All types when dry, 4WD when wet	Recreational Use: Fishing, rafting, water contact	Boat Launches: Hand launch only
Site Contact/s:	Caltrans King City Facility (831) 385-4124		San Lorenzo County Park (831) 386-0965	
ESI Shoreline Type:	9B - Vegetated Low Banks; 8F - Vegetated Steeply Sloping Bluffs; 5 - Mixed Sand and Gravel Beaches, Mixed Sand and Gravel Bars and Gently Sloping Banks; 1B - Exposed Solid Man-Made Structures			

Site Images

Upstream



Downstream



Straight Across



Gate



RR = River Right RL = River Left

Photo Date: 10/19/2023

Site Objectives: Deploy boom to contain and collect oil.

Implementation: Deploy 400 feet of boom at an angle to prevent entrainment. Anchor boom to bank or bridge column. Oil collection will be on river left.

Staging Area Location and Capabilities/Amenities/Waste Management: Staging area beneath Highway 101 bridge on river left. Consult Caltrans as this area is a habitat restoration site.

Response Strategy Map (overview)

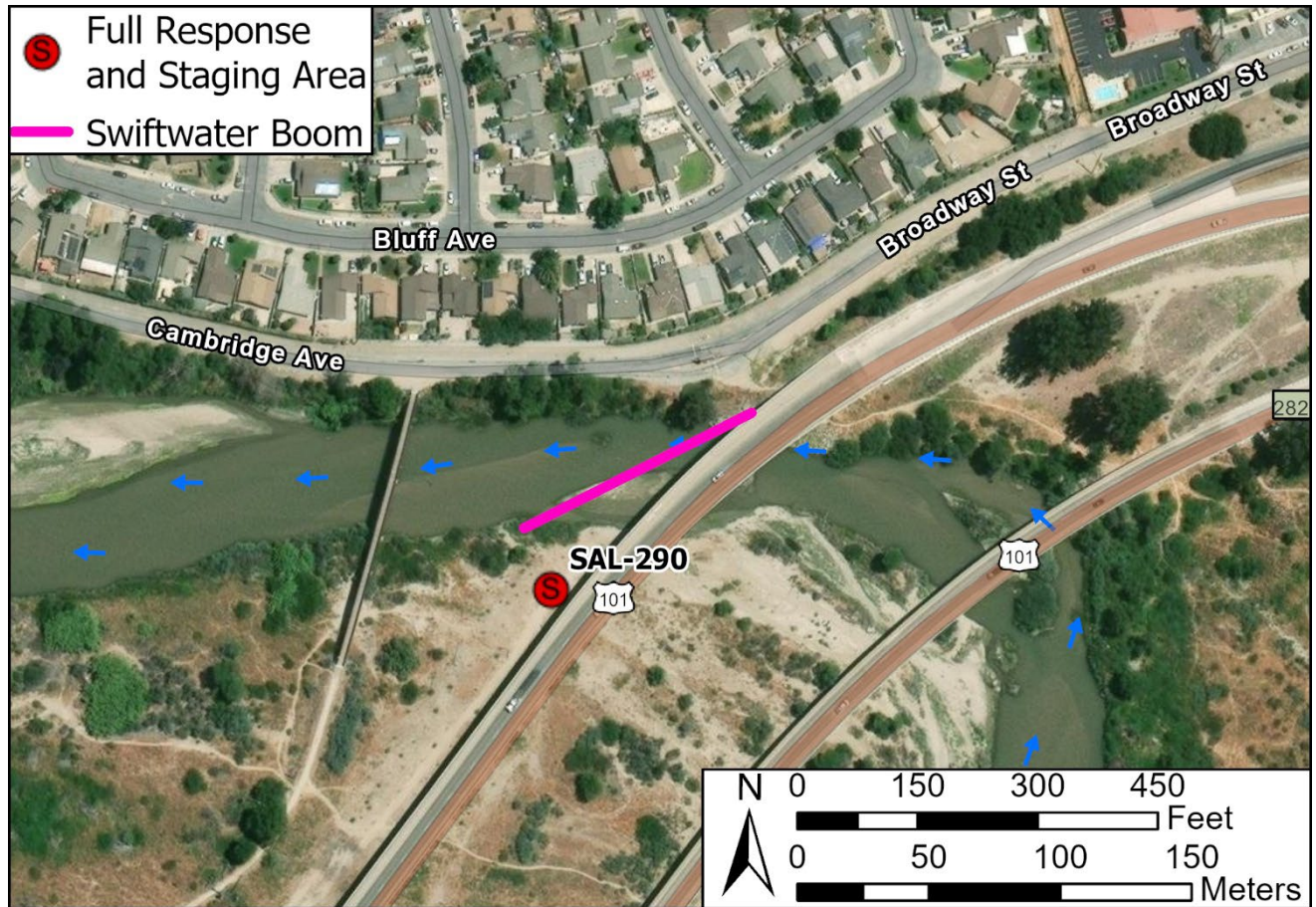


Table of Response Resources

Type	Sub-Type	Size	Unit	Quantity	Special Equipment or Comments
Boom	Swiftwater	6 in. skirt	feet	400	Booming strategy only effective during medium to low flow
Anchor	Danforth	25 lb.		2	
T-post				12	
Vessel	Small Skiff			1	Hand launch from riverbank
Personnel				8-10	