

**Driving Directions:**

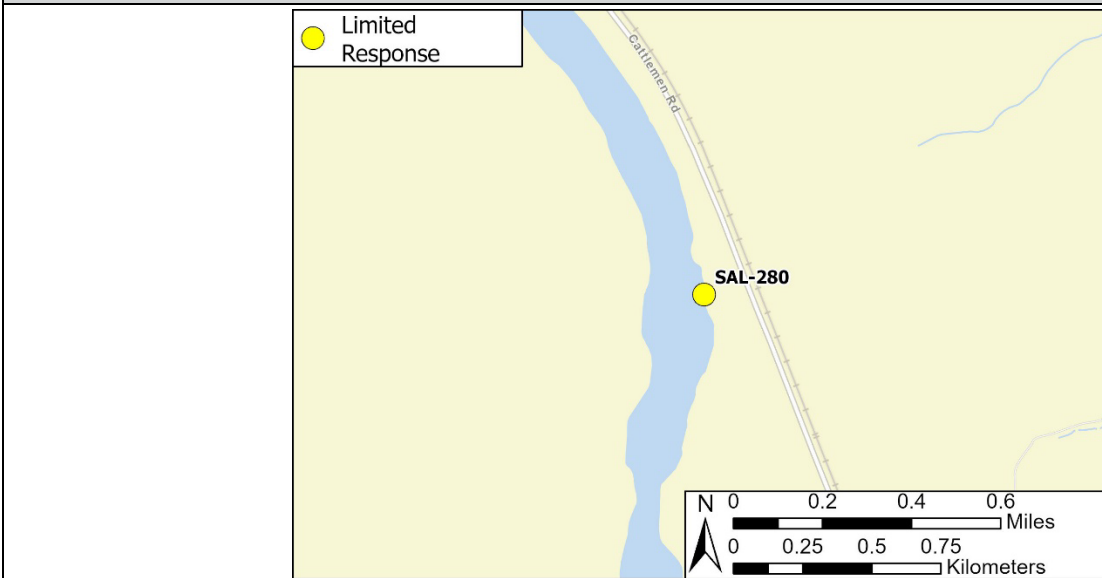
**From the North (Salinas):** On Highway 101, take exit 263 onto Paris Valley Road toward San Ardo. Turn left onto Paris Valley Road/Cattlemen Road. In approximately 3.7 miles, there will be a locked gate on the left. After gaining access through the gate, turn left and follow access road to river's edge.

**From the South (Paso Robles):** On Highway 101, take exit 263 onto Paris Valley Road toward San Ardo. Turn right onto Paris Valley Road/Cattlemen Road. In approximately 3.7 miles, there will be a locked gate on the left. After gaining access through the gate, turn left and follow access road to river's edge.

<b>Latitude/Longitude:</b> 36.052806, -120.923025	<b>Highway Postmile:</b> N/A	<b>Railroad Milepost:</b> UPRR 177	<b>Cell Service:</b> Yes, Verizon
--	---------------------------------	---------------------------------------	--------------------------------------

**Nearest Address:** N/A, use Lat/Long above

**Overview Street Map**



**Hazards, Restrictions and Advice for Responders**

- Two-track, dirt road needs land ownership permission and 4-wheel drive during wet season
- Swift water during winter and spring flows
- Trip and fall hazards, slippery when wet
- Biological hazards (e.g., wildlife including rattlesnakes, wild boar)

**Resources-At-Risk**

**Ecological:** Tricolored Black Bird, Yellow Warbler, Bald Eagle, Golden Eagle, Northern Harrier, Burrowing Owl, White-tailed Kite, Mountain Lion, American Badger, Salinas Pocket Mouse, San Joaquin Kit Fox, Ringtail, Pallid Bat, Townsend's Big-eared Bat, Western Red Bat, Western Mastiff Bat, California Red-legged Frog, California Tiger Salamander, Western Spadefoot, Coast Horned Lizard, Northern California Legless Lizard, San Joaquin Coachwhip, Two-striped Garter Snake, Pond Turtle, Monterey Hitch, Steelhead, Crotch's Bumble Bee, Vernal Pool Fairy Shrimp, Monarch Butterfly, Abbott's Bush-mallow, Monterey Spineflower.

**Economic:** N/A

**Tribal:** Contact the Native American Heritage Commission at (916) 373-3710

**Cultural and Historic:** Contact the Northwest Information Center at (707) 332-1117

**Site Description and Field Notes**

<b>Site Location/Segment:</b> SAL-MT-C-005	<b>Site Description and Field Notes:</b> This site is located on the San Bernardo Ranch (SBR) property. This is a good location to deploy boom and collect oil on river right. Property owner permission must be granted prior to entrance.			
<b>Gradient:</b> Low	<b>River Width:</b> 30 m (100 ft)	<b>Vehicular Access:</b> Yes	<b>Recreational Use:</b> No	<b>Boat Launches:</b> Hand launch only
<b>Site Contact/s:</b>	Unknown – San Bernardo Ranch			
<b>ESI Shoreline Type:</b>	9B - Vegetated Low Banks; 8F - Vegetated Steeply Sloping Bluffs			

**Site Images**

Upstream



Downstream



Straight Across



Access to Ranch Property



**RR = River Right RL = River Left**

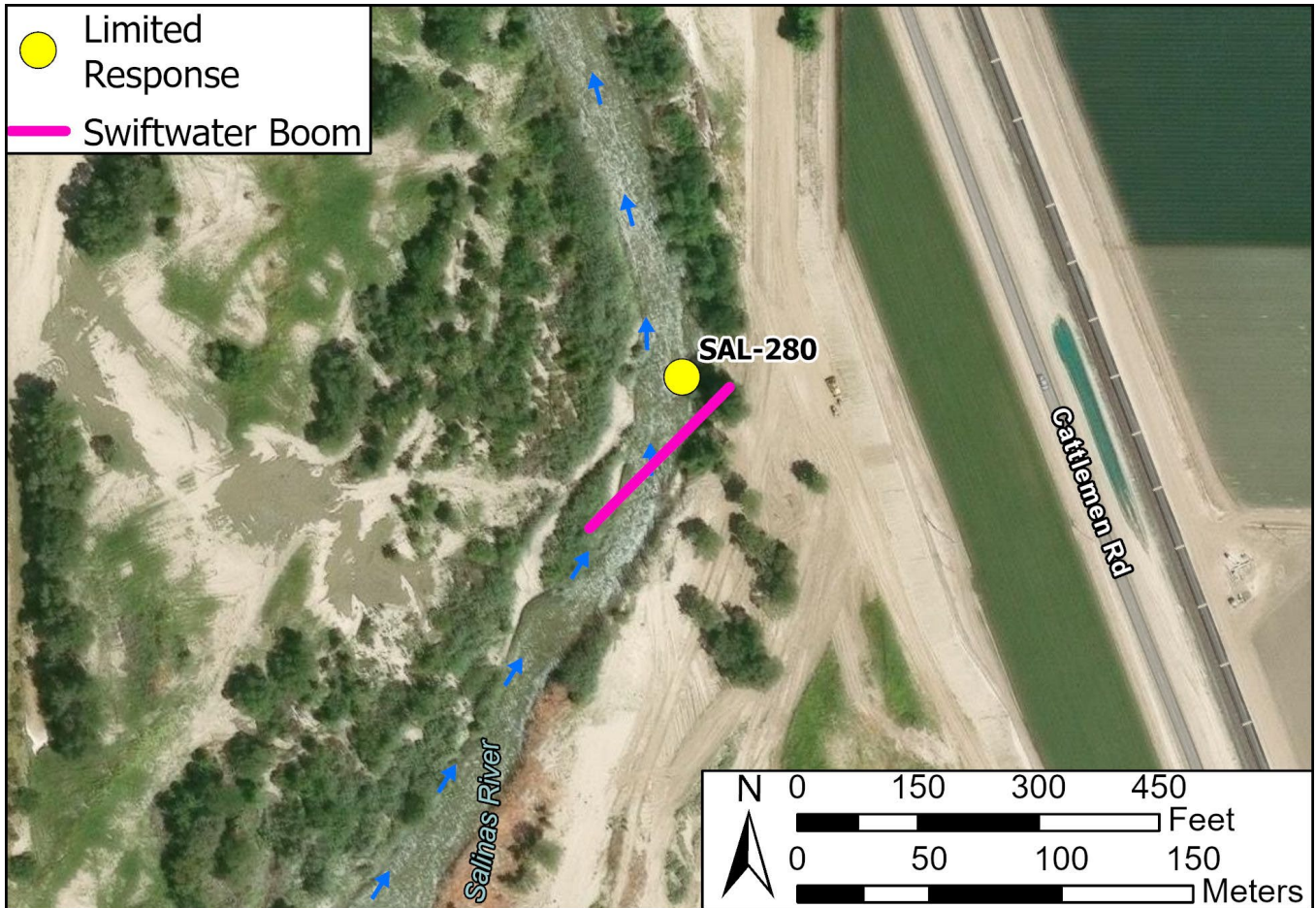
**Photo Dates:** 10/03/2024

**Site Objectives:** Deploy boom to contain and collect oil.

**Implementation:** Deploy 300 feet of boom upstream at an angle to prevent entrainment, using anchoring stakes. Oil collection will be on river right.

**Staging Area Location and Capabilities/Amenities/Waste Management:** Limited room for staging at any clearings near the site. The San Ardo Fire Station #44, located at 62810 Railroad Street, San Ardo, CA 93450 could be used for additional storage.

**Response Strategy Map (overview)**



**Table of Response Resources**

Type	Sub-Type	Size	Unit	QTY - Unit	Special Equipment or Comments
Boom	Swiftwater	6 in. skirt	feet	300	Booming strategy only effective during medium to low flow
Anchor	Danforth	25 lb.		2	
T-post				10	
Vessel	Small Skiff			1	Hand launch from riverbank
Personnel				8-10	