

Driving Directions:

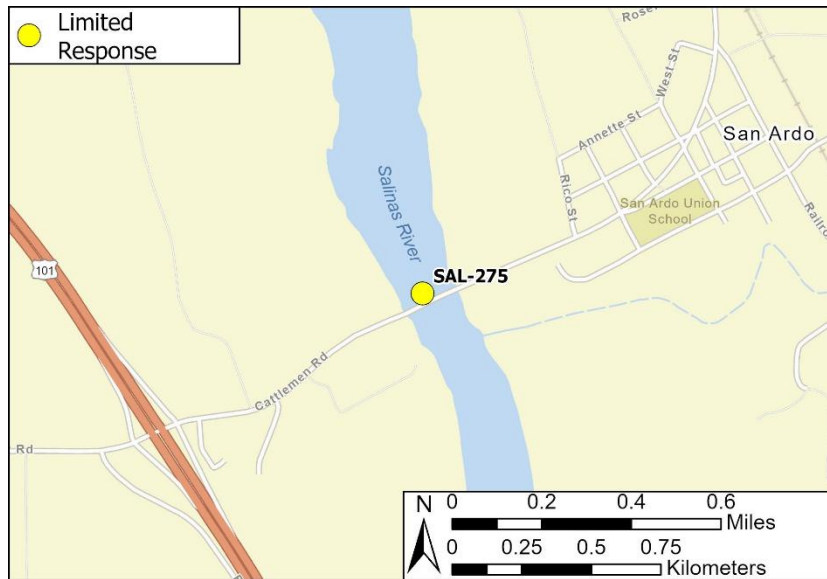
From the North (Salinas): On Highway 101, take exit 263 onto Paris Valley Road toward San Ardo. Turn left onto Paris Valley Road/Cattlemen Road. In approximately 0.8 miles, turn left onto Rico Street. In approximately 0.5 miles take a U-turn to the lower access road back towards Cattlemen Road and follow it to the gate.

From the South (Paso Robles): On Highway 101, take exit 263 onto Paris Valley Road toward San Ardo. Turn right onto Paris Valley Road/Cattlemen Road. In approximately 0.8 miles, turn left onto Rico Street. In approximately 0.5 miles take a U-turn to the lower access road back towards Cattlemen Road and follow it to the gate.

Latitude/Longitude: 36.016589, -120.913677	Highway Postmile: N/A	Railroad Milepost: N/A	Cell Service: Yes, Verizon
--	---------------------------------	----------------------------------	--------------------------------------

Nearest Address: N/A, use Lat/Long above

Overview Street Map



Hazards, Restrictions and Advice for Responders

- Two-track, dirt road needs land ownership permission and 4-wheel drive during wet season
- Swift water during winter and spring flows
- Trip and fall hazards, slippery when wet
- Biological hazards (e.g., wildlife including rattlesnakes, wild boar)

Resources-At-Risk

Ecological: Tricolored Black Bird, Yellow Warbler, Bald Eagle, Golden Eagle, Northern Harrier, Burrowing Owl, White-tailed Kite, Mountain Lion, American Badger, Salinas Pocket Mouse, San Joaquin Kit Fox, Ringtail, Pallid Bat, Townsend's Big-eared Bat, Western Red Bat, Western Mastiff Bat, California Red-legged Frog, California Tiger Salamander, Western Spadefoot, Coast Horned Lizard, Northern California Legless Lizard, San Joaquin Coachwhip, Two-striped Garter Snake, Pond Turtle, Monterey Hitch, Steelhead, Crotch's Bumble Bee, Vernal Pool Fairy Shrimp, Monarch Butterfly, Abbott's Bush-mallow.

Economic: N/A

Tribal: Contact the Native American Heritage Commission at (916) 373-3710

Cultural and Historic: Contact the Northwest Information Center at (707) 332-1117

Site Description and Field Notes

Site Location/Segment: SAL-MT-C-005
Site Description and Field Notes: This site is located on the San Bernardo Ranch (SBR) property. Pancho Rico Creek inlet is just upstream from this location. This is a good location to deploy boom and collect oil on river right. Property owner permission must be granted prior to entrance. Access to river left is through the orchard off Cattlemen Road.

Gradient: Low	River Width: 35 m (115 ft)	Vehicular Access: Yes	Recreational Use: No	Boat Launches: Hand launch only
-------------------------	--------------------------------------	---------------------------------	--------------------------------	---

Site Contact/s:	Unknown – San Bernardo Ranch
------------------------	------------------------------

ESI Shoreline Type:	9B - Vegetated Low Banks; 5 - Mixed Sand and Gravel Beaches, Mixed Sand and Gravel Bars and Gently Sloping Banks
----------------------------	--

Site Images

Upstream



Downstream



Straight Across



Access to Ranch Property



RR = River Right RL = River Left

Photo Dates: 10/03/2024

Site Objectives: Deploy boom to contain and collect oil.

Implementation: Deploy 350 feet of boom upstream at an angle to prevent entrainment, using anchoring stakes. Oil collection will be on river right.

Staging Area Location and Capabilities/Amenities/Waste Management: Limited room for staging at the San Ardo Fire Station #44, located at 62810 Railroad Street, San Ardo, CA 93450.

Response Strategy Map (overview)

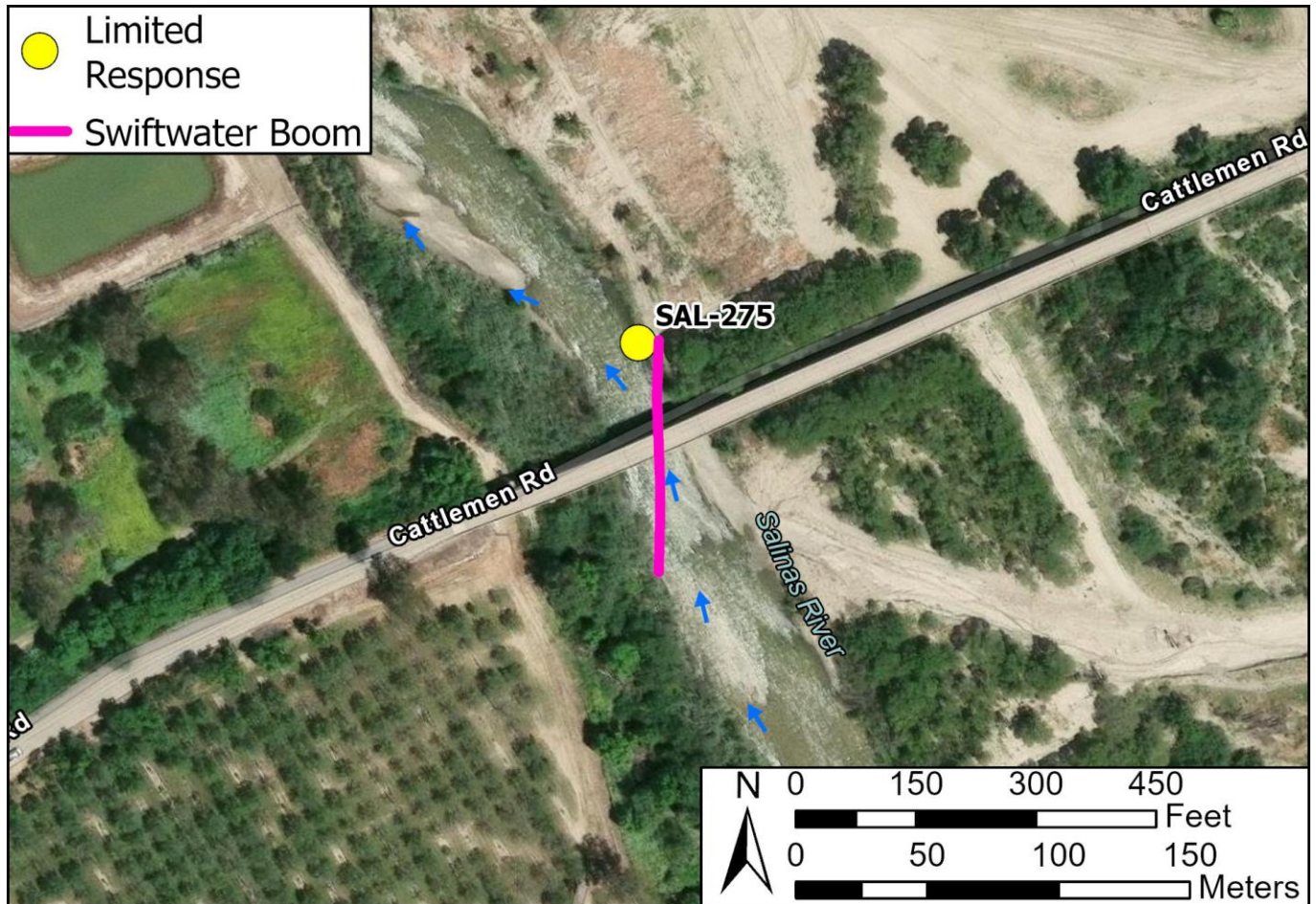


Table of Response Resources

Type	Sub-Type	Size	Unit	QTY - Unit	Special Equipment or Comments
Boom	Swiftwater	6 in. skirt	feet	350	Booming strategy only effective during medium to low flow
Anchor	Danforth	25 lb.		2	
T-post				10	
Vessel	Small Skiff			1	Hand launch from riverbank
Personnel				8-10	