

Driving Directions:

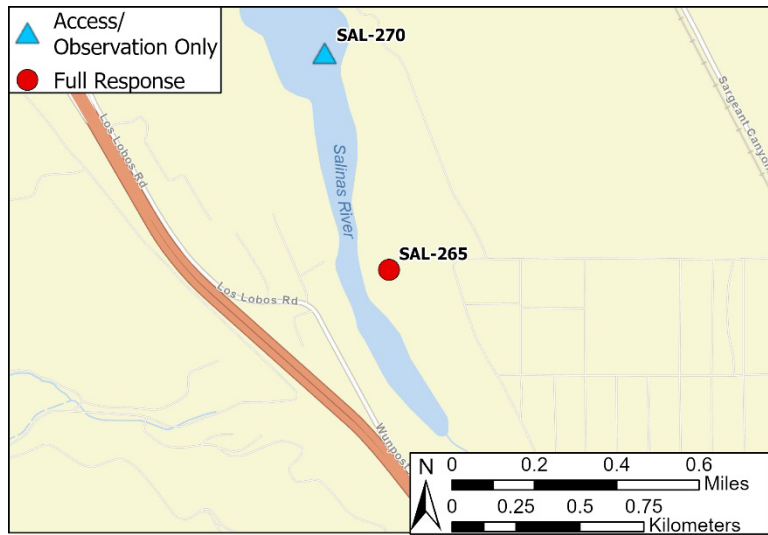
From the North (Salinas): On Highway 101, take exit 258 onto Alvarado Road, turn left onto Alvarado Road. Turn Left onto Wunpost Road and in approximately 1 mile, turn right onto the bridge. After crossing the river, take the first left and then another immediate left. At the river's bank, turn right and follow the river until you reach the site.

From the South (Paso Robles): On Highway 101, take exit 258 onto Alvarado Road, turn right onto Alvarado Road. Turn Left onto Wunpost Road and in approximately 1 mile, turn right onto the bridge. After crossing the river, take the first left and then another immediate left. At the river's bank, turn right and follow the river until you reach the site.

| | | | |
|--|--|---------------------------------------|--------------------------------------|
| Latitude/Longitude: 35.968926, -120.887394 | Highway Postmile: US-101-PM 15.5 | Railroad Milepost: UPRR 185 | Cell Service: Yes, Verizon |
|--|--|---------------------------------------|--------------------------------------|

Nearest Address: 66881 Sargent Canyon Road, San Ardo, CA 93450

Overview Street Map



Hazards, Restrictions and Advice for Responders

- Two-track, dirt road needs land ownership permission and 4-wheel drive during wet season
- Oil production field with high degree of traffic from heavy equipment
- Swift water during winter and spring flows
- Trip and fall hazards, slippery when wet
- Biological hazards (e.g., wildlife including rattlesnakes, wild boar)

Resources-At-Risk

Ecological: Tricolored Black Bird, Yellow Warbler, Bald Eagle, Golden Eagle, California Condor, Northern Harrier, Burrowing Owl, White-tailed Kite, Mountain Lion, American Badger, Salinas Pocket Mouse, San Joaquin Kit Fox, Ringtail, Pallid Bat, Townsend's Big-eared Bat, Western Red Bat, Western Mastiff Bat, California Red-legged Frog, California Tiger Salamander, Western Spadefoot, Coast Horned Lizard, Northern California Legless Lizard, San Joaquin Coachwhip, Two-striped Garter Snake, Pond Turtle, Monterey Hitch, Steelhead, Crotch's Bumble Bee, Vernal Pool Fairy Shrimp, Monarch Butterfly, Abbott's Bush-mallow.

Economic: N/A

Tribal: Contact the Native American Heritage Commission at (916) 373-3710

Cultural and Historic: Contact the Northwest Information Center at (707) 332-1117

Site Description and Field Notes

| | | | | |
|---|---|---------------------------------|---------------------------------------|---|
| Site Location/Segment: SAL-MT-B-010 | Site Description and Field Notes: This site is located at the northwest section of the San Ardo oil production field. There is heavy poison oak along the river's edge. Heavy equipment would be needed to make access to river right. | | | |
| Gradient: Low | River Width: 60 m (197 ft) | Vehicular Access: Yes | Recreational Use: No | Boat Launches: Hand launch only |
| Site Contact/s: | Chevron Dispatch (661) 392-2222 | | 24-hour access line (831) 627-3001 | |
| ESI Shoreline Type: | 9B - Vegetated Low Banks | | | |

Site Images

Upstream



Downstream



Straight Across



River Right = RR River Left = RL

Photo Date: 02/20/2025

Site Objectives: Deploy boom to contain and collect oil.

Implementation: Deploy 400 feet of boom upstream at an angle to prevent entrainment, using anchoring stakes. Oil collection will be on river right.

Staging Area Location and Capabilities/Amenities/Waste Management: Potential staging area located just east of dirt road at SAL-255. An appropriate staging area would be determined by UC and Chevron during a spill event.

Response Strategy Map (overview)

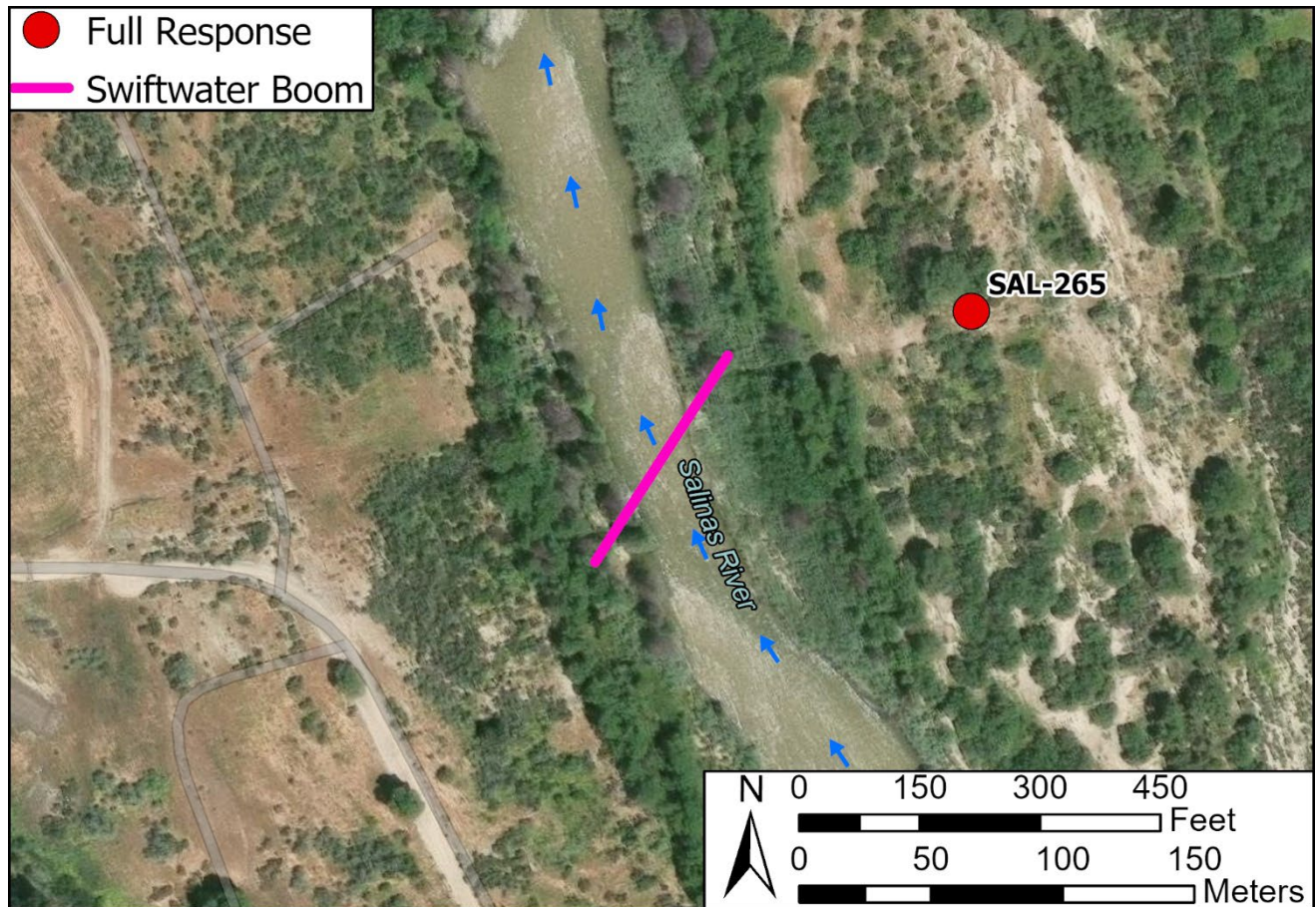


Table of Response Resources

| Type | Sub-Type | Size | Unit | Quantity | Special Equipment or Comments |
|-----------|-------------|-------------|------|----------|---|
| Boom | Swiftwater | 6 in. skirt | feet | 400 | Booming strategy only effective during medium to low flow |
| Anchor | Danforth | 25 lb. | | 2 | |
| T-post | | | | 10 | |
| Vessel | Small Skiff | | | 1 | Hand launch from riverbank |
| Personnel | | | | 8-10 | |