

Driving Directions:

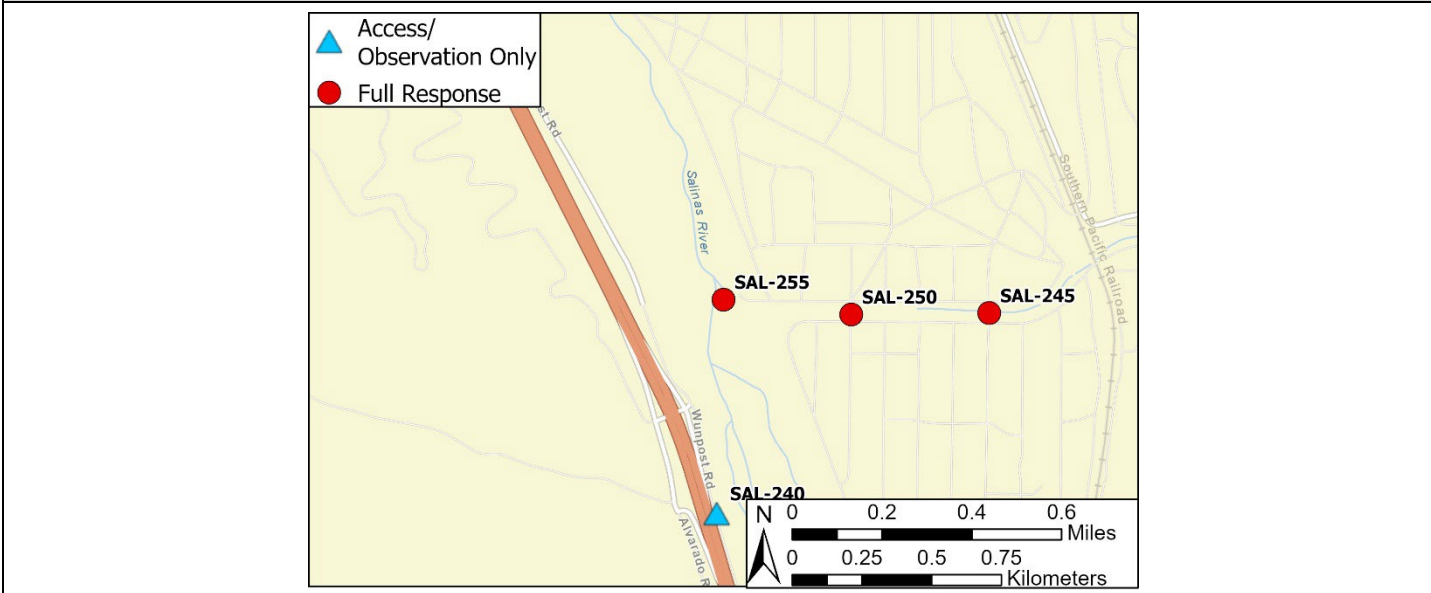
From the North (Salinas): On Highway 101, take exit 258 onto Alvarado Road, turn left onto Alvarado Road. Turn Left onto Wunpost Road and in approximately 1 mile, turn right onto the bridge. After crossing the river, take the first right turn and follow along the river until you reach Sargent Creek.

From the South (Paso Robles): On Highway 101, take exit 258 onto Alvarado Road, turn right onto Alvarado Road. Turn Left onto Wunpost Road and in approximately 1 mile, turn right onto the bridge. After crossing the river, take the first right turn and follow along the river until you reach Sargent Creek.

Latitude/Longitude: 35.950047, -120.874395	Highway Postmile: US-101-PM 15.5	Railroad Milepost: UPRR 185	Cell Service: Yes, Verizon
--	--	---------------------------------------	--------------------------------------

Nearest Address: 66881 Sargent Canyon Road, San Ardo, CA 93450

Overview Street Map



Hazards, Restrictions and Advice for Responders

- Two-track, dirt road needs land ownership permission and 4-wheel drive during wet season
- Oil production field with high degree of traffic from heavy equipment
- Swift water during winter and spring flows
- Trip and fall hazards, slippery when wet
- Biological hazards (e.g., wildlife including rattlesnakes, wild boar)

Resources-At-Risk

Ecological: American White Pelican, Bald Eagle, Burrowing Owl, Golden Eagle, Northern Harrier, White-tailed Kite, Least Bell's Vireo, Tricolored Black Bird, Yellow Warbler, Mountain Lion, American Badger, Salinas Pocket Mouse, San Joaquin Kit Fox, Ringtail, Pallid Bat, Townsend's Big-eared Bat, Western Red Bat, Western Mastiff Bat, California Red-legged Frog, California Tiger Salamander, Western Spadefoot, Coast Horned Lizard, Northern California Legless Lizard, San Joaquin Coachwhip, Two-striped Garter Snake, Pond Turtle, Monterey Hitch, Steelhead, Crotch's Bumble Bee, Vernal Pool Fairy Shrimp, Monarch Butterfly, Abbott's bush-mallow.

Economic: N/A

Tribal: Contact the Native American Heritage Commission at (916) 373-3710

Cultural and Historic: Contact the Northwest Information Center at (707) 332-1117

Site Description and Field Notes

Site Location/Segment: SAL-MT-B-005	Site Description and Field Notes: This site is located within the San Ardo oil production field. At this location, Sargent Creek enters the Salinas River. There is heavy vegetation along the river's edge. The T-post is a current boom anchor placed by Chevron and used during previous drills.			
Gradient: Low	River Width: 46 m (150 ft)	Vehicular Access: Yes	Recreational Use: No	Boat Launches: Hand launch only
Site Contact/s:	Chevron Dispatch (661) 392-2222		24-hour access line (831) 627-3001	
ESI Shoreline Type:	9B - Vegetated Low Banks; 1B - Exposed Solid Man-Made Structures			

Site Images

Upstream



Downstream



Straight Across



Potential Staging Area



RR = River Right RL = River Left

Photo Date: 08/28/2024

Site Objectives: Prevent any release of oil flowing in Sargent Creek from entering the Salinas River.

Implementation: Deploy 550 feet of boom upstream at an angle to prevent entrainment, using anchoring stakes. Oil collection will be on river right.

Staging Area Location and Capabilities/Amenities/Waste Management: Potential staging is approximately 1200 ft south in a laydown yard. An appropriate staging area would be determined by UC and Chevron during a spill event.

Response Strategy Map (overview)

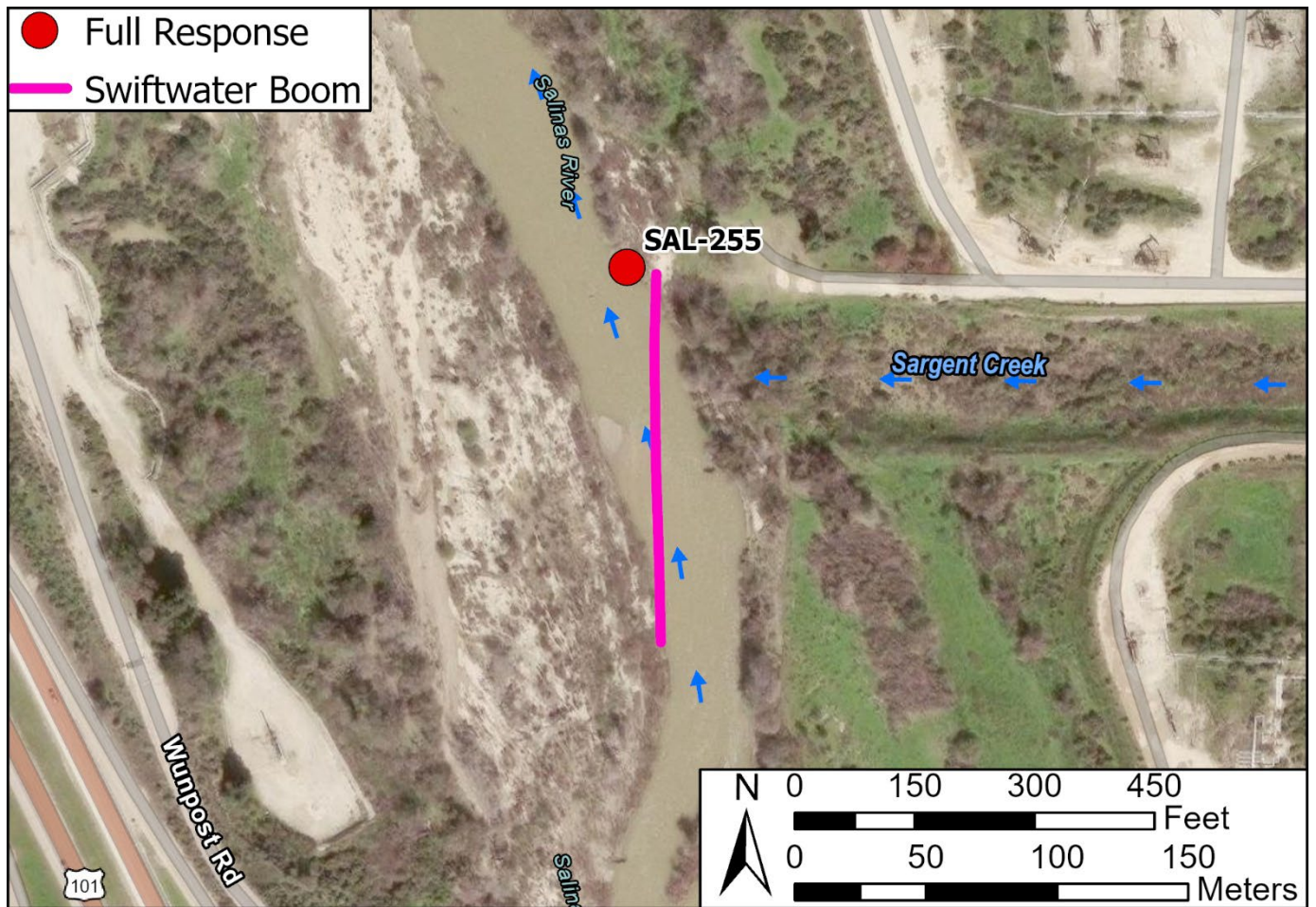


Table of Response Resources

Type	Sub-Type	Size	Unit	Quantity	Special Equipment or Comments
Boom	Swiftwater	6 in. skirt	feet	550	Booming strategy only effective during medium to low flow
Anchor	Danforth	25 lb.		2	
T-post				10	
Vessel	Small Skiff			1	Hand launch from riverbank
Personnel				8-10	