

Driving Directions:

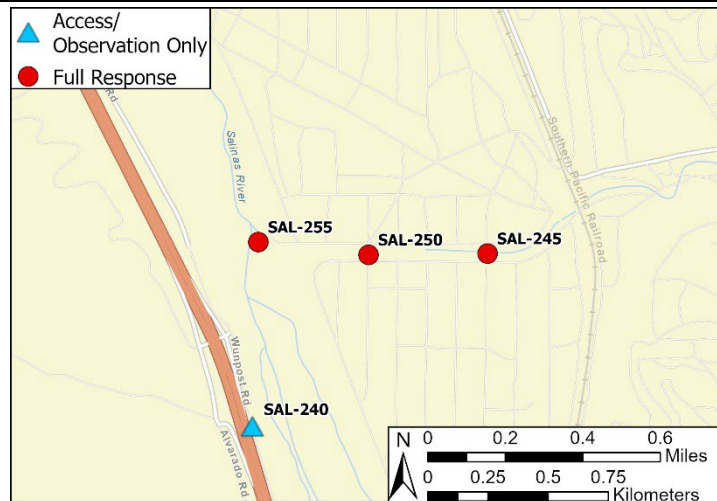
From the North (Salinas): On Highway 101, take exit 258 onto Alvarado Road, turn left onto Alvarado Road. Turn Left onto Wunpost Road and in approximately 1 mile, turn right onto the bridge. After crossing the river, take the first right turn and follow along the river until you reach Sargent Creek.

From the South (Paso Robles): On Highway 101, take exit 258 onto Alvarado Road, turn right onto Alvarado Road. Turn Left onto Wunpost Road and in approximately 1 mile, turn right onto the bridge. After crossing the river, take the first right turn and follow along the river until you reach Sargent Creek.

Latitude/Longitude: 35.949660, -120.870284	Highway Postmile: US-101-PM 15.5	Railroad Milepost: UPRR 185	Cell Service: Yes, Verizon
--	--	---------------------------------------	--------------------------------------

Nearest Address: 66881 Sargent Canyon Road, San Ardo, CA 93450

Overview Street Map



Hazards, Restrictions and Advice for Responders

- Two-track, dirt road needs land ownership permission and 4-wheel drive during wet season
- Oil production field with high degree of traffic from heavy equipment
- Swift water during winter and spring flows
- Trip and fall hazards, slippery when wet
- Biological hazards (e.g., wildlife including rattlesnakes, wild boar)

Resources-At-Risk

Ecological: American White Pelican, Bald Eagle, Burrowing Owl, Golden Eagle, Northern Harrier, White-tailed Kite, Least Bell's Vireo, Tricolored Black Bird, Yellow Warbler, Mountain Lion, American Badger, Salinas Pocket Mouse, San Joaquin Kit Fox, Ringtail, Pallid Bat, Townsend's Big-eared Bat, Western Red Bat, Western Mastiff Bat, California Red-legged Frog, California Tiger Salamander, Western Spadefoot, Coast Horned Lizard, Northern California Legless Lizard, San Joaquin Coachwhip, Two-striped Garter Snake, Pond Turtle, Monterey Hitch, Steelhead, Crotch's Bumble Bee, Vernal Pool Fairy Shrimp, Monarch Butterfly, Abbott's bush-mallow, Monterey Gilia, Pale-yellow Layia, Pinnacles Buckwheat.

Economic: N/A

Tribal: Contact the Native American Heritage Commission at (916) 373-3710

Cultural and Historic: Contact the Northwest Information Center at (707) 332-1117

Site Description and Field Notes

Site Location/Segment: SAL-MT-B-005	Site Description and Field Notes: These flood gates are in Sargent Creek, which is an ephemeral creek located within the San Ardo oil production field. They are made to close and block flow but it is uncertain if they are currently functional due to sediment build up around the gates.			
Gradient: Low	River Width: 46 m (150 ft)	Vehicular Access: Yes	Recreational Use: No	Boat Launches: No
Site Contact/s:	Chevron Dispatch (661) 392-2222		24-hour access line (831) 627-3001	
ESI Shoreline Type:	9B - Vegetated Low Banks; 1B - Exposed Solid Man-Made Structures			

Site Images

Upstream



Across Left Bank



Across Right Bank



Potential Staging Area



RR = River Right RL = River Left

Photo Date: 08/28/2024

Site Objectives: Prevent any release of oil flowing in Sargent Creek from entering the Salinas River.

Implementation: In dry conditions, use heavy equipment to close flood gates and/or create an earthen berm to prevent flow further downstream. When water is flowing in Sargent Creek, deploy 300 feet of boom.

Staging Area Location and Capabilities/Amenities/Waste Management: Potential staging is approximately 1200 ft south in a laydown yard. An appropriate staging area would be determined by UC and Chevron during a spill event.

Response Strategy Map (overview)

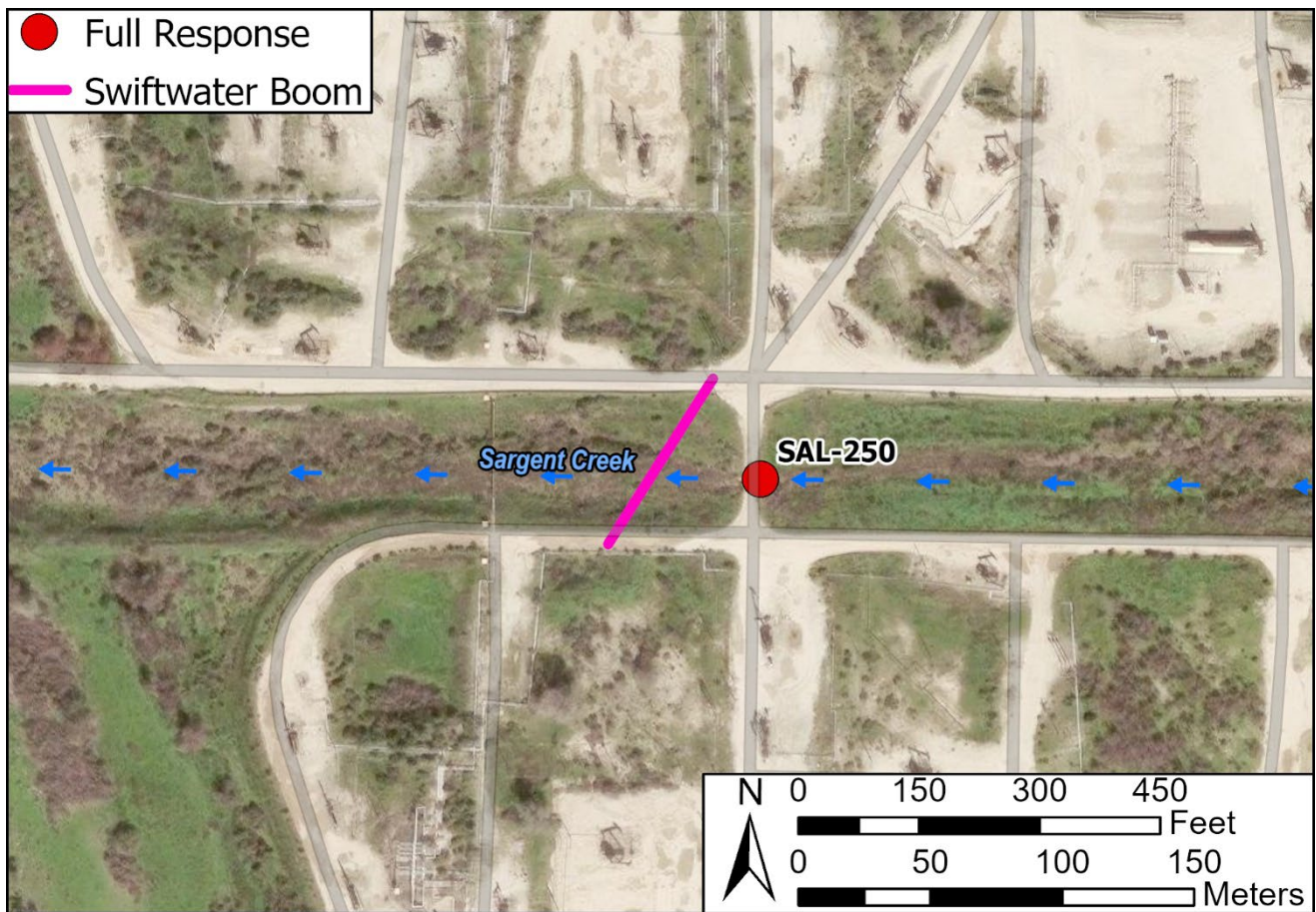


Table of Response Resources

Type	Sub-Type	Size	Unit	Quantity	Special Equipment or Comments
Heavy Equipment	Backhoe			1	Earthen berm if no water is present
Boom	Swiftwater	6 in. skirt	feet	300	Deploy boom if water is present
Anchor	Danforth	25 lb.		2	
T-post				10	
Personnel				8-10	