

**Driving Directions:**

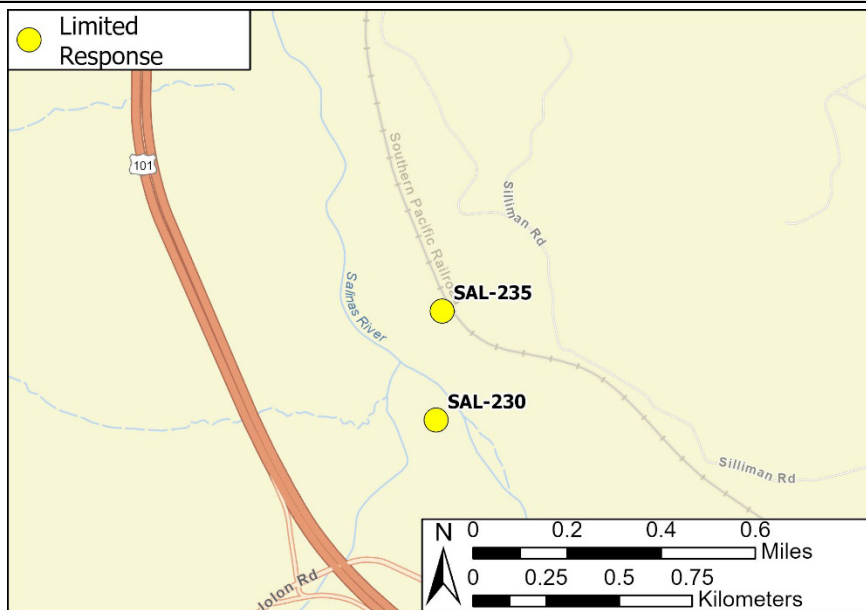
**From the North (Salinas):** On Highway 101, take exit 251 towards Bradley. Turn left onto Bradley Road. Continue on Bradley Road over the bridge. In approximately 1200 ft. the gate will be on your left. Follow the two-track road to the response location.

**From the South (Paso Robles):** On Highway 101, take exit 251 towards Bradley. Turn right onto Bradley Road. Continue on Bradley Road over the bridge. In approximately 1200 ft. the gate will be on your left. Follow the two-track road to the response location.

<b>Latitude/Longitude:</b> 35.880370, -120.832567	<b>Highway Postmile:</b> N/A	<b>Railroad Milepost:</b> UPRR 190.5	<b>Cell Service:</b> Yes, Verizon
--	---------------------------------	---	--------------------------------------

**Nearest Address:** Porter Estate Co. Bradley Ranch 72501 Jolon Road, Bradley, CA 93426

**Overview Street Map**



**Hazards, Restrictions and Advice for Responders**

- Two-track, dirt road needs land ownership permission and 4-wheel drive during wet season
- Swift water during winter and spring flows
- Trip and fall hazards, slippery when wet
- Biological hazards (e.g., wildlife including rattlesnakes, wild boar)

**Resources-At-Risk**

**Ecological:** Least Bell's Vireo, Tricolored Black Bird, Yellow Warbler, Golden Eagle, Bald Eagle, Northern Harrier, Burrowing Owl, White-tailed Kite, Mountain Lion, Ringtail, Salinas Pocket Mouse, San Joaquin Kit Fox, Pallid Bat, Townsend's Big-eared Bat, Western Mastiff Bat, Western Red Bat, California Red-legged Frog, California Tiger Salamander, Foothill Yellow-Legged Frog, Western Spadefoot, Coast Horned Lizard, Northern California Legless Lizard, San Joaquin Coachwhip, Two-striped Garter Snake, Pond Turtle, Monterey Hitch, Steelhead, Crotch's Bumble Bee, Verna Pool Fairy Shrimp, Monarch Butterfly, Monterey Gilia, Pale-yellow Layia, Pinnacles Buckwheat,

**Economic:** N/A

**Tribal:** Contact the Native American Heritage Commission at (916) 373-3710

**Cultural and Historic:** Contact the Northwest Information Center at (707) 332-1117

**Site Description and Field Notes**

<p><b>Site Location/Segment:</b> SAL-MT-A-015</p>	<p><b>Site Description and Field Notes:</b> This site is located downstream of SAL-230, with access to river right. Accessing this location requires a two-mile drive down a dirt two-track road which would require 4-wheel drive. Property owner permission must be granted prior to entrance.</p>			
<p><b>Gradient:</b> Low</p>	<p><b>River Width:</b> 35 m (115 ft)</p>	<p><b>Vehicular Access:</b> Yes</p>	<p><b>Recreational Use:</b> No</p>	<p><b>Boat Launches:</b> Hand launch only</p>
<p><b>Site Contact/s:</b></p>	<p>Norm Buckman (805) 674-8590</p>			
<p><b>ESI Shoreline Type:</b></p>	<p>4 - Coarse Grained Sand Beaches, Sand Beaches, Sand Bars and Gently Sloping Banks; 9B - Vegetated Low Banks</p>			

**Site Images**

Upstream



Downstream



Straight Across



Access to Response Location



**RR = River Right RL = River Left**

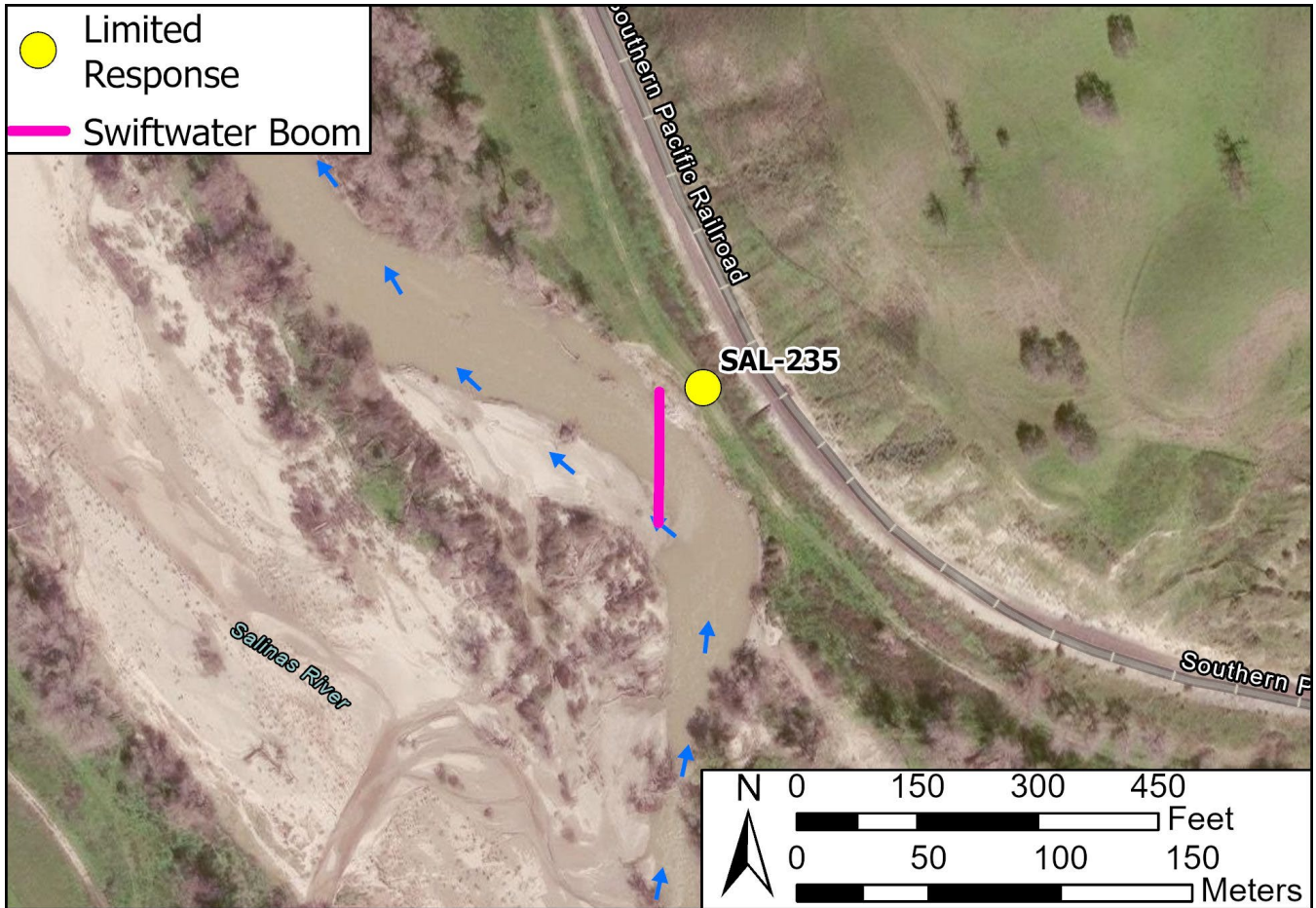
**Photo Dates:** 04/17/2024 & 7/2023

**Site Objectives:** Deploy boom to contain and collect oil.

**Implementation:** Deploy 300 feet of boom upstream at an angle to prevent entrainment, using anchoring stakes. Oil collection will be on river right.

**Staging Area Location and Capabilities/Amenities/Waste Management:** Limited room for staging boom trucks, trailer, vacuum trucks and temporary storage tanks. Additional staging available at empty lot (Orradre Ranch) adjacent to Bradley Elementary School off Bradley Road.

**Response Strategy Map (overview)**



**Table of Response Resources**

Type	Sub-Type	Size	Unit	Quantity	Special Equipment or Comments
Boom	Swiftwater	6 in. skirt	feet	300	Booming strategy only effective during medium to low flow
Anchor	Danforth	25 ib.		2	
T-post				10	
Vessel	Small Skiff			1	Hand launch from riverbank
Personnel				8-10	