

Driving Directions:

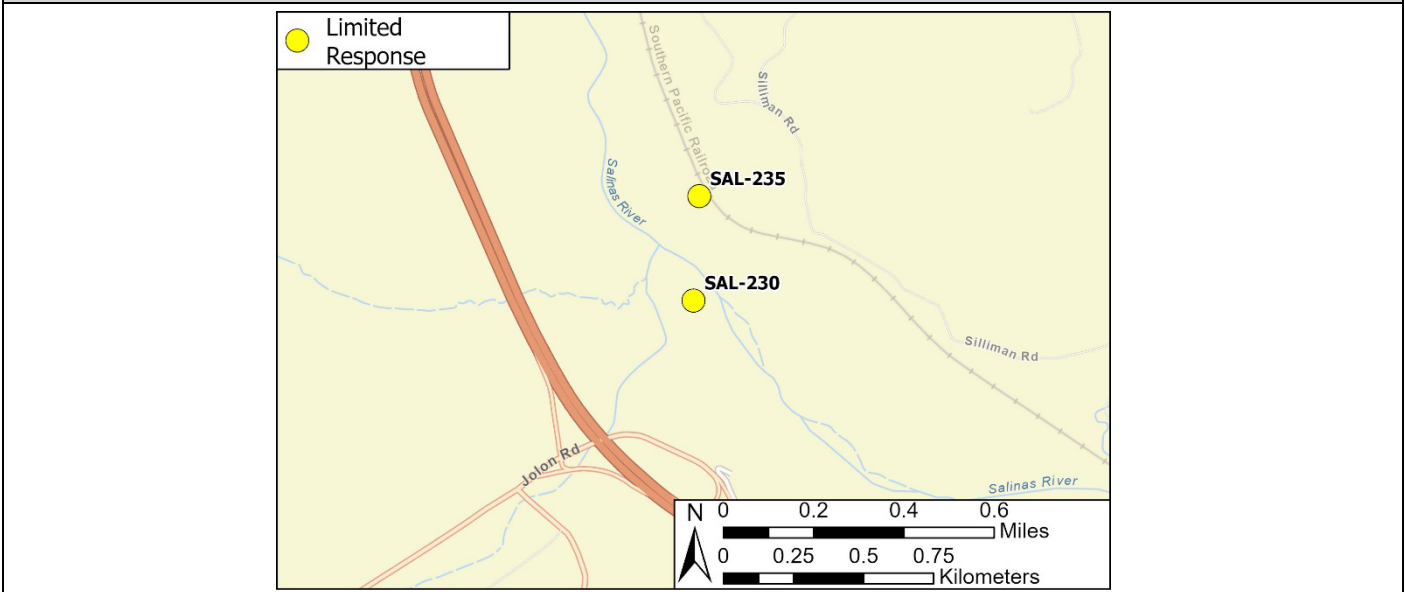
From the North (Salinas): On Highway 101, take exit 252 onto Jolon Road. Turn left onto Jolon Road. In approximately 600 ft. the entrance to Porter Ranch House will be on the left. Drive northeast through the gate and turn left at the fork in the road and then a quick right towards the river.

From the South (Paso Robles): On Highway 101, take exit 252 onto Jolon Road. In approximately 0.4 miles, the entrance to the Porter Ranch House will be on the right. Drive northeast through the gate and turn left at the fork in the road and then a quick right towards the river.

Latitude/Longitude: 35.877661, -120.832748	Highway Postmile: N/A	Railroad Milepost: N/A	Cell Service: Yes, Verizon
--	---------------------------------	----------------------------------	--------------------------------------

Nearest Address: Porter Estate Co. Bradley Ranch 72501 Jolon Road, Bradley CA, 93426

Overview Street Map



Hazards, Restrictions and Advice for Responders

- Two-track, dirt road needs land ownership permission and 4-wheel drive during wet season
- Swift water during winter and spring flows
- Trip and fall hazards, slippery when wet
- Biological hazards (e.g., wildlife including rattlesnakes, wild boar)

Resources-At-Risk

Ecological: Least Bell's Vireo, Tricolored Black Bird, Yellow Warbler, Golden Eagle, Bald Eagle, Northern Harrier, Burrowing Owl, White-tailed Kite, Mountain Lion, Ringtail, Salinas Pocket Mouse, San Joaquin Kit Fox, Pallid Bat, Townsend's Big-eared Bat, Western Mastiff Bat, Western Red Bat, California Red-legged Frog, California Tiger Salamander, Foothill Yellow-Legged Frog, Western Spadefoot, Coast Horned Lizard, Northern California Legless Lizard, San Joaquin Coachwhip, Two-striped Garter Snake, Pond Turtle, Monterey Hitch, Steelhead, Crotch's Bumble Bee, Verna Pool Fairy Shrimp, Monarch Butterfly, Abbott's Bush-mallow,

Economic: N/A

Tribal: Contact the Native American Heritage Commission at (916) 373-3710

Cultural and Historic: Contact the Northwest Information Center at (707) 332-1117

Site Description and Field Notes

Site Location/Segment: SAL-MT-A-015	Site Description and Field Notes: This site is located on the Porter Estate Co. Bradley Ranch property. This is a good location to deploy boom and collect oil. Property owner permission must be granted prior to entrance.			
Gradient: Low	River Width: 35 m (115 ft)	Vehicular Access: Yes	Recreational Use: No	Boat Launches: Hand launch only
Site Contact/s:	Norm Buckman (805) 674-8590			
ESI Shoreline Type:	5 -Mixed Sand and Gravel Beaches, Mixed Sand and Gravel Bars and Gently Sloping Bank; 9B - Vegetated Low Banks			

Site Images

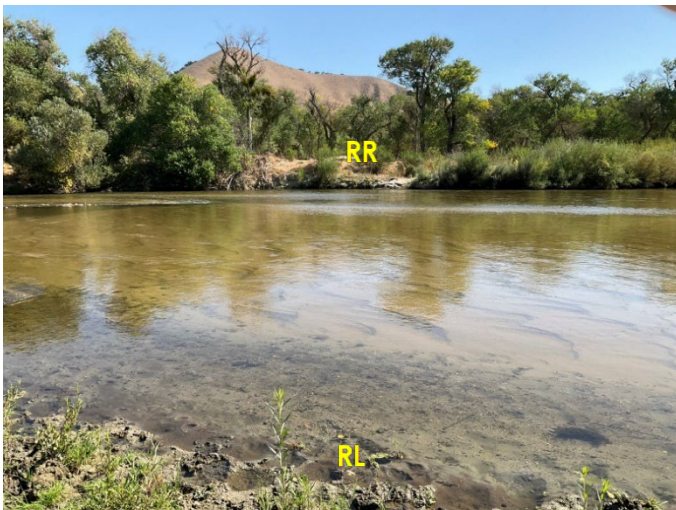
Upstream



Downstream



Straight Across



Access to Ranch Property



RR = River Right RL = River Left

Photo Dates: 04/12/2024 & 12/13/2024

Site Objectives: Deploy boom to contain and collect oil.

Implementation: Deploy 400 feet of boom upstream at an angle to prevent entrainment, using anchoring stakes. Oil collection will be on river left.

Staging Area Location and Capabilities/Amenities/Waste Management: Limited room for staging boom trucks, trailer, vacuum trucks and temporary storage tanks. Additional staging available at the corner of Jolon Road and Nacimiento Lake Drive.

Response Strategy Map (overview)

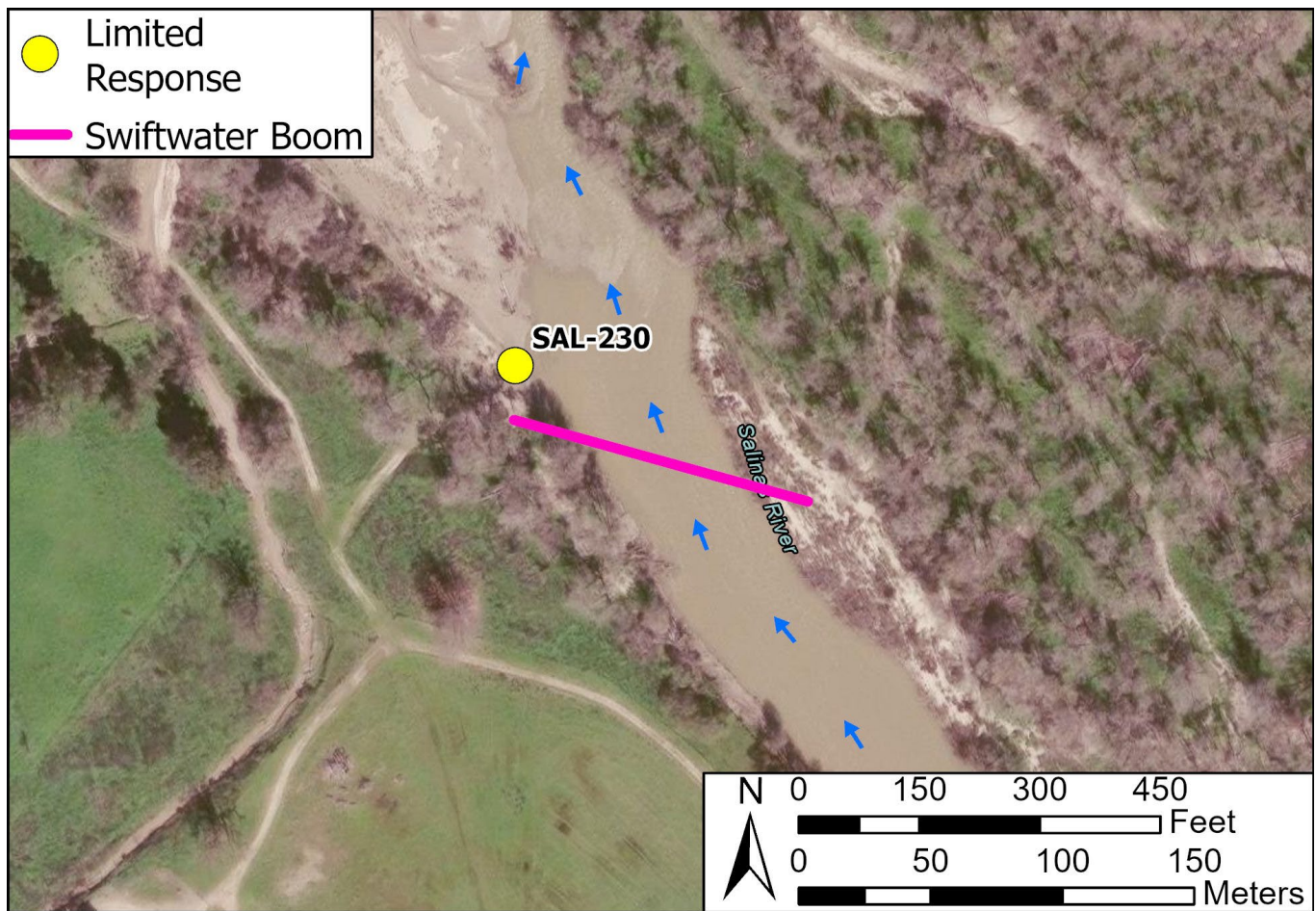


Table of Response Resources

Type	Sub-Type	Size	Unit	Quantity	Special Equipment or Comments
Boom	Swiftwater	6 in. skirt	feet	400	Booming strategy only effective during medium to low flow
Anchor	Danforth	25 lb.		2	
T-post				10	
Vessel	Small Skiff			1	Hand launch from riverbank
Personnel				8-10	