

Driving Directions:

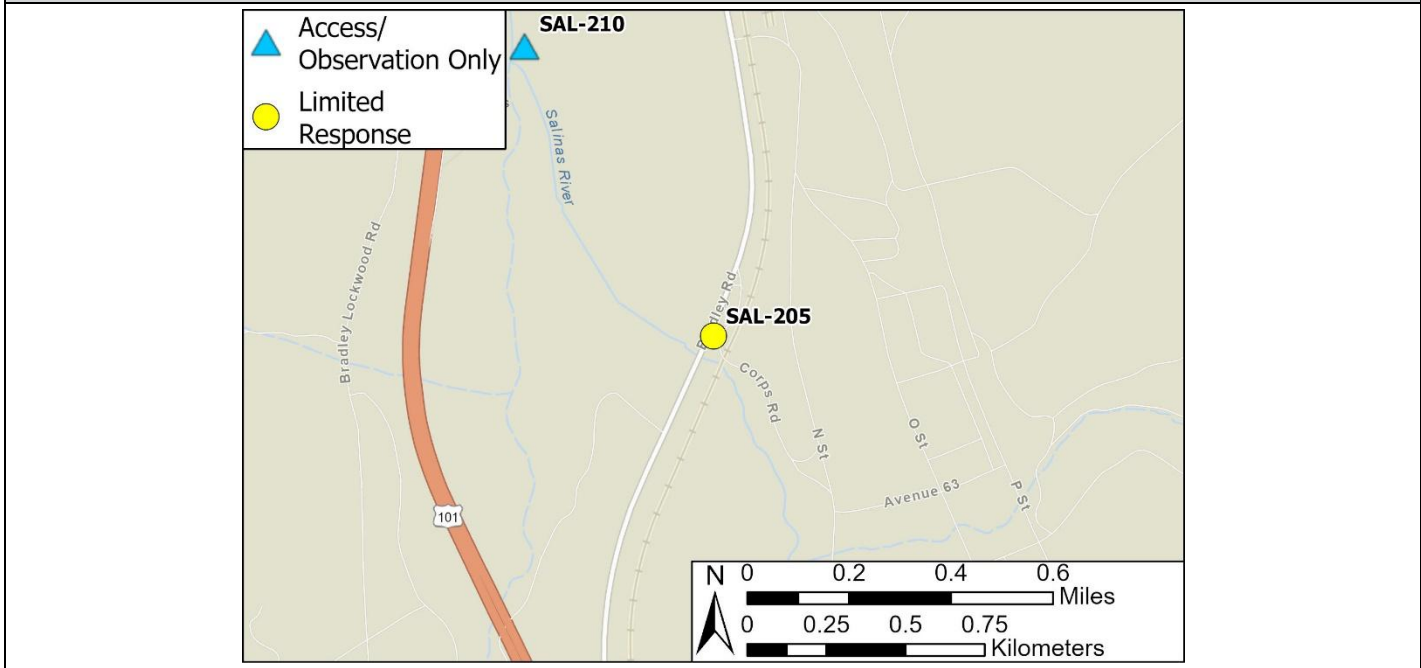
From the North (Salinas): On Highway 101, take exit 245 onto Bradley Road. Keep right toward East Garrison. Turn right onto Corps Road for approximately 800 ft. There will be a dirt pull off adjacent to the river.

From the South (Paso Robles): On Highway 101, exit 245 onto Bradley Road, keep right towards East Garrison. Turn right onto Corps Road. In approximately 800 ft. there will be a dirt pull off adjacent to the river.

Latitude/Longitude: 35.826012, -120.751059	Highway Postmile: N/A	Railroad Milepost: UPRR 197	Cell Service: No
--	---------------------------------	---------------------------------------	----------------------------

Nearest Address: California National Guard, Camp Roberts East Garrison, San Miguel, CA 93451

Overview Street Map



Hazards, Restrictions and Advice for Responders

- Steep bank to river's edge
- Swift water during winter and spring flows
- Trip and fall hazards, slippery when wet
- Biological hazards (e.g., wildlife including rattlesnakes, wild boar)
- Military vehicle traffic to and from base

Resources-At-Risk

Ecological: Least Bell's Vireo, Tricolored Black Bird, Yellow Warbler, Bald Eagle, Golden Eagle, Northern Harrier, Burrowing Owl, White-tailed Kite, California Condor, Mountain Lion, American Badger, Salinas Pocket Mouse, San Joaquin Kit Fox, Ringtail, Pallid Bat, Townsend's Big-eared Bat, Western Red Bat, Western Mastiff Bat, California Red-legged Frog, California Tiger Salamander, Western Spadefoot, Coast Horned Lizard, Northern California Legless Lizard, Two-striped Garter Snake, Pond Turtle, Monterey Hitch, Steelhead, Crotch's Bumblebee, Vernal Pool Fairy Shrimp, Monarch Butterfly, Monterey Gilia, Pale-Yellow Layia, and Pinnacles Buckwheat.

Economic: N/A

Tribal: Contact the Native American Heritage Commission at (916) 373-3710

Cultural and Historic: Contact the Northwest Information Center at (707) 332-1117

Site Description and Field Notes

<p>Site Location/Segment: SAL-MT-A-010</p>	<p>Site Description and Field Notes: This location is on Camp Roberts Military Base property. It can be accessed on public roads but would need military approval prior to staging and deploying equipment. Nacimiento River enters the Salinas River at river left. Staging is very limited.</p>			
<p>Gradient: Low</p>	<p>River Width: 150 m (492 ft)</p>	<p>Vehicular Access: No</p>	<p>Recreational Use: No</p>	<p>Boat Launches: Hand launch only</p>
<p>Site Contact/s:</p>	<p>Camp Roberts 24-hour access (916) 854-3000</p>			
<p>ESI Shoreline Type:</p>	<p>4 - Coarse Grained Sand Beaches, Sand Beaches, Sand Bars and Gently Sloping Banks; 9B - Vegetated Low Banks</p>			

Site Images

Upstream



Downstream



Straight Across



Small Staging Area



RR = River Right RL = River Left

Photo Date: 04/12/2024

Site Objectives: Deploy boom to contain and collect oil.

Implementation: Deploy 400 feet of boom upstream from the bridge at an angle to prevent entrainment, using anchoring stakes. Oil collection will be on river right.

Staging Area Location and Capabilities/Amenities/Waste Management: Limited room for staging boom trucks, trailer, vacuum trucks and temporary storage tanks. Additional staging available at the corner of Bradley Road and Corps Road.

Response Strategy Map (overview)

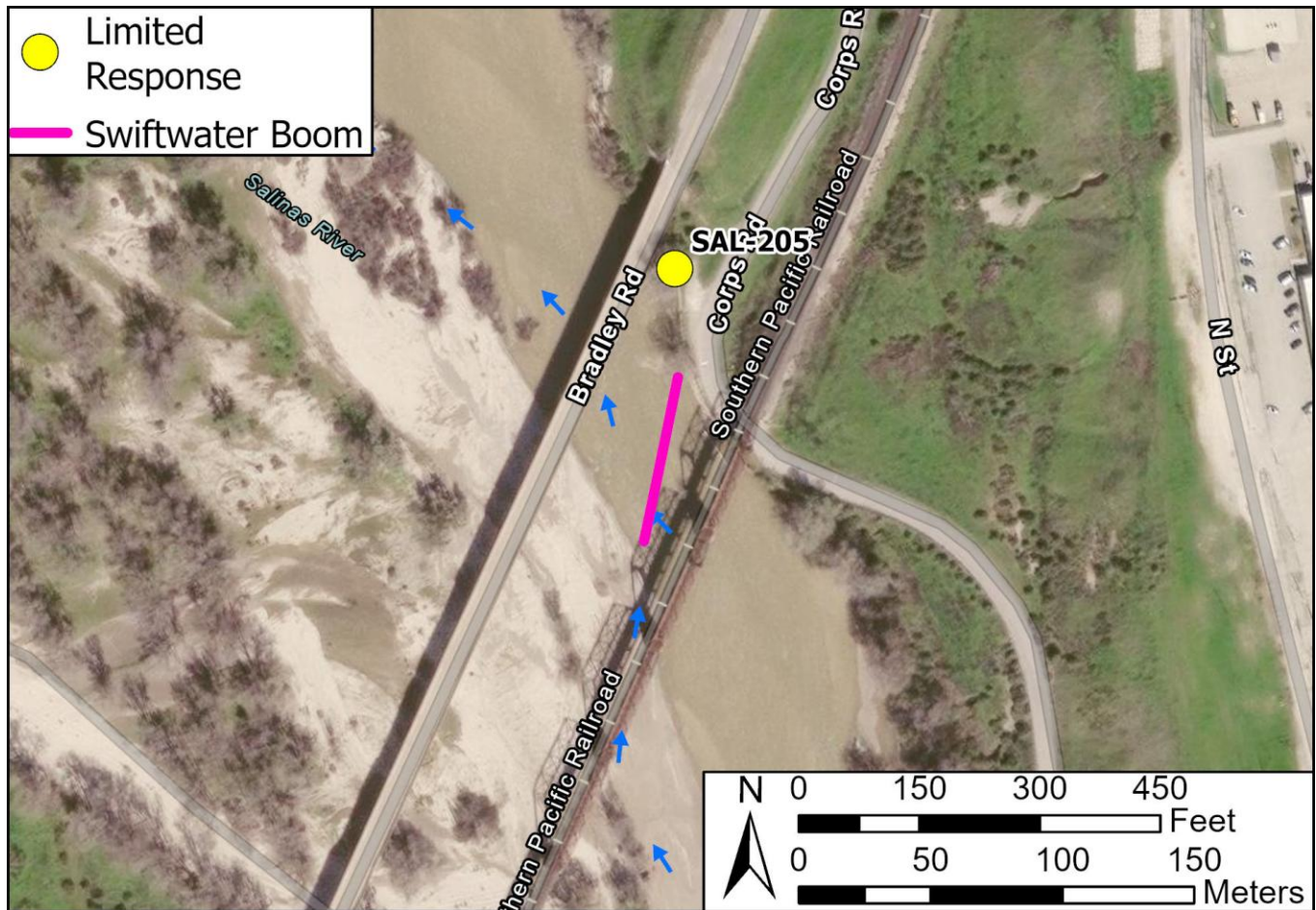


Table of Response Resources

Type	Sub-Type	Size	Unit	Quantity	Special Equipment or Comments
Boom	Swiftwater	6 in. skirt	feet	400	Booming strategy only effective during medium to low flow
Stakes	Danforth	25 lb.		2	
T-post				10	
Vessel	Small Skiff			1	Hand launch from riverbank
Personnel				8-10	