

Driving Directions:

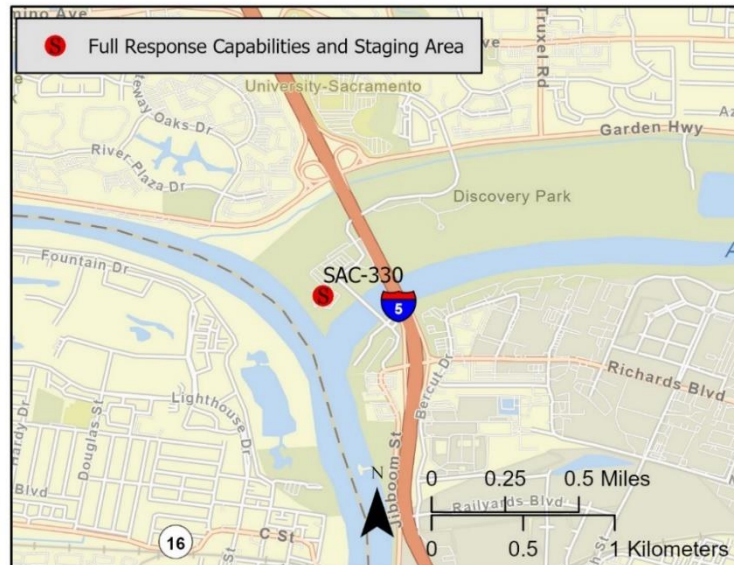
From South: Use I-80 East, take exit toward Redding, merge onto I-5 North. Take Exit 520 for Richards Blvd. Turn left on Richards Blvd. Turn right after America's Best Value Inn (on the left). After Park kiosk (entrance) continue on Jibboom Street. Turn left on Natomas Park Drive into the parking area.

From North: Use I-5 South, take Exit 520 for Richards Blvd., turn right on Richards Blvd. Turn right after America's Best Value Inn (on the left). After Park kiosk (entrance) continue on Jibboom Street. Take left on Natomas Park Drive into the parking area.

Latitude: 38.600328 Longitude: -121.508504	Highway Postmile: SAC 25.006	Railroad Milepost: N/A	Cell Service: Yes – Verizon tested
-------------------------------------------------------------	----------------------------------------	-------------------------------	----------------------------------------------

Nearest Address: 1000 Garden Highway, Sacramento, CA, 95833 **Thomas Guide #:** 235/6B

Overview Street Map



Hazards, Restrictions and Advice for Responders

- Trip and fall hazards, slippery when icy or wet
- Fast moving water at times of high flow
- Downed trees near shore
- Submerged objects
- Steep banks
- Highly trafficked recreation area

Resources-At-Risk

Ecological: Least Bell's Vireo, Western Yellow-billed Cuckoo, Longfin Smelt, Steelhead – Central Valley DPS, Valley Elderberry Longhorn Beetle

Economic: Discovery Park, Chevy's on the River, Sacramento Water Treatment Plant, Matsui Waterfront Park

Tribal: Contact the Native American Heritage Commission at (916) 373-3710.

Cultural and Historic: Contact the North Central Information Center at (916) 278-6217.

Site Description and Field Notes

<p>Site Location/Segment: SAC-SA-A-020</p>	<p>Site Description and Field Notes: The boat launch is just off the Sacramento River (~30yds) in a small slough. High use public launch facility. Large parking, restrooms, and suitable area for staging. Just upstream of the confluence of the Sacramento River and the American River.</p>			
<p>Gradient: Low</p>	<p>River Width: 220 m (721 ft)</p>	<p>Vehicular Access? The heavily vegetated shore does not allow vehicle access</p>	<p>Recreational Use? Rafting, fishing, boating, hiking area</p>	<p>Boat Launches: Boat launch on site</p>
<p>Site Contact/s:</p>	<p>Sacramento County Regional Parks: (916) 875-7275</p>			
<p>ESI Shoreline Type:</p>	<p>9B – vegetated low banks</p>			

Site Images

Upstream



Boat Launch Area



Straight Across



RR = River Right RL = River Left

Photo Date: 8/21/2019

Site Objectives: Collection/exclusion

Implementation: Cascade 4 – 400-foot lengths of boom to direct product toward boat launch; use 400 feet of boom deployed from inlet to direct product for collection; use 400 feet of boom to line dock and prevent product from moving into tributary (east of boat launch).

Staging Area Location and Capabilities/Amenities/Waste Management: Large staging area on site.

Response Strategy Map (overview)

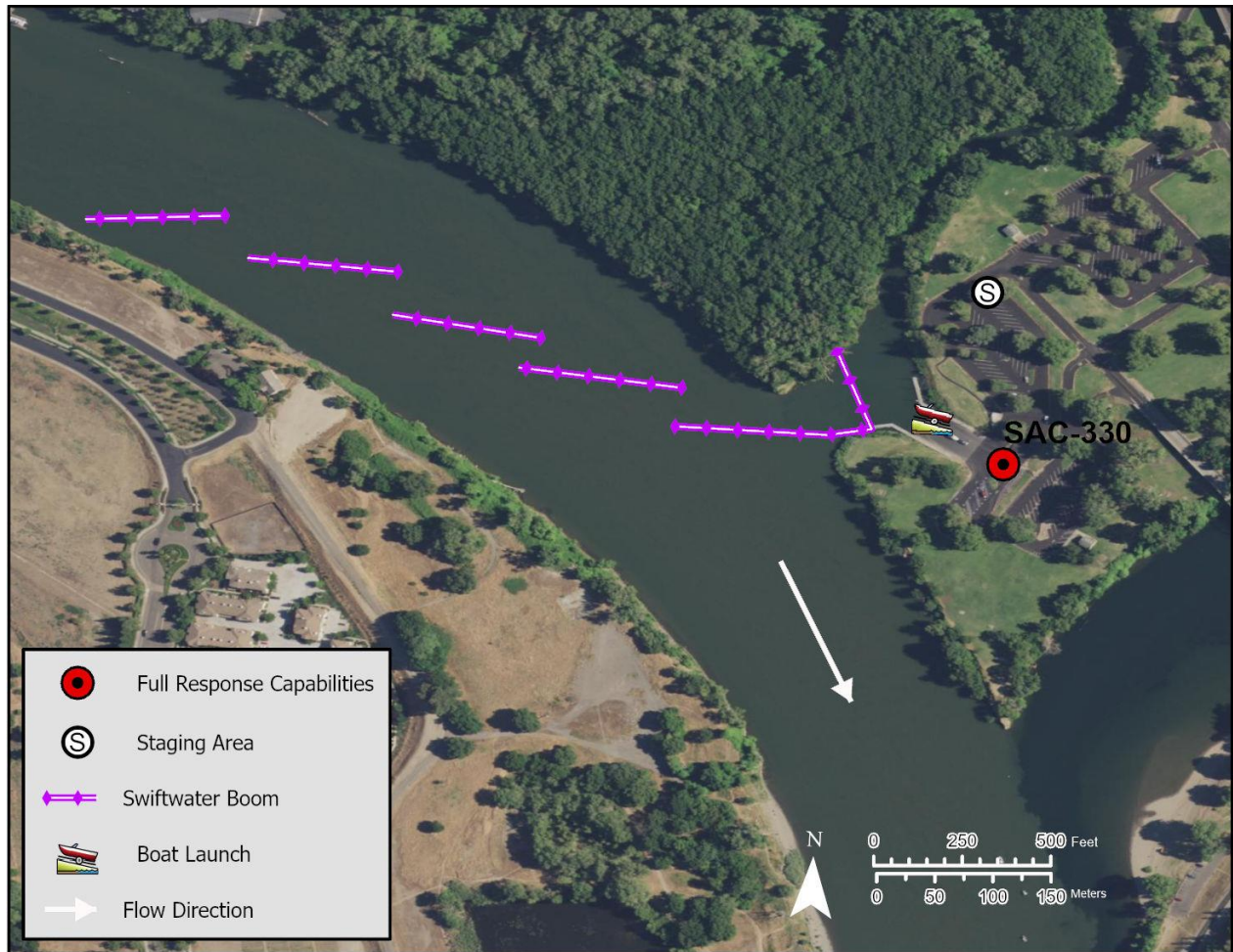


Table of Response Resources

Type	Sub-Type	Size	Unit	QTY - Unit	Special Equipment or Comments
Boom	Swiftwater	6 in x 6 in	ft	2,400	
Anchors	Danforth	25	lb	24	
Stakes				6	Use to secure boom to shore
Boat		25	ft	2	Response vessel
Personnel				8	2 people on each vessel, 4 people on the shore