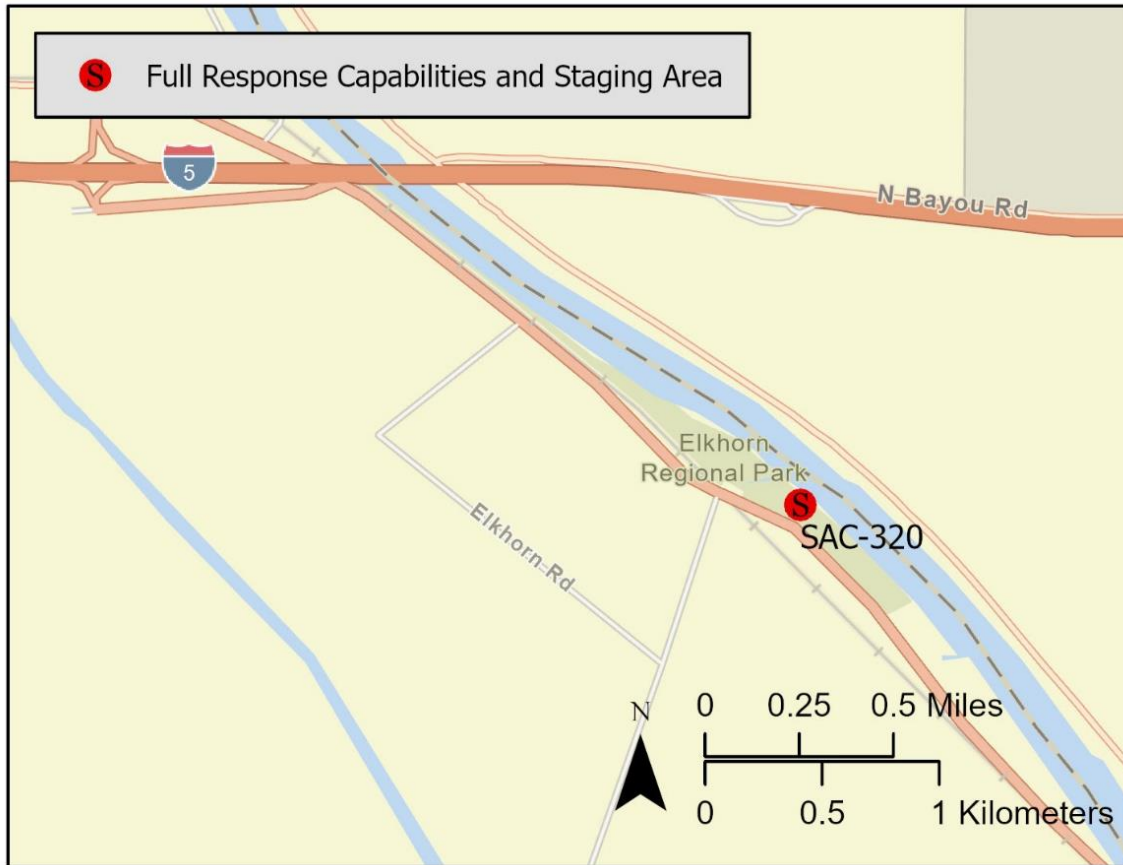


<b>Driving Directions:</b>	From I-5: Take Exit 531 toward Road 22. Left onto County Road 118. Right onto Old River Road. Turn left into Elkhorn Regional Park.		
<b>Latitude:</b> 38.61222	<b>Highway Postmile:</b> SAC 33.766	<b>Railroad Milepost:</b> N/A	<b>Cell Service:</b> Yes – Verizon tested
<b>Longitude:</b> -121.611250			
<b>Nearest Address:</b> 18989 Old River Rd., West Sacramento, CA, 95691 <b>Thomas Guide #:</b> 234/D5			

**Overview Street Map**



**Hazards, Restrictions and Advice for Responders**

- Trip and fall hazards, slippery when icy or wet
- Fast moving water at times of high flow
- Downed trees near shore
- Submerged objects

**Resources-At-Risk**

**Ecological:** Swainson's Hawk, Longfin Smelt, Sacramento Splittail, Steelhead – Central Valley DPS, Valley Elderberry Longhorn Beetle

**Economic:** Elkhorn Regional Park, agricultural water intakes in area

**Tribal:** Contact the Native American Heritage Commission at (916) 373-3710.

**Cultural and Historic:** Contact the North Central Information Center at (916) 278-6217.

**Site Description and Field Notes**

<b>Site Location/Segment:</b> SAC-SA-A-010	<b>Site Description and Field Notes:</b> This stretch of river has heavily vegetated banks on both its sides. Large parking area with facilities which could be used for staging. No shoreline access.			
<b>Gradient:</b> Low	<b>River Width:</b> 201 m (659 ft)	<b>Vehicular Access?</b> No shoreline access at this site	<b>Recreational Use?</b> Rafting, boating, fishing	<b>Boat Launches:</b> Boat launch on site
<b>Site Contact/s:</b>	Yolo County (530) 406-4880			
<b>ESI Shoreline Type:</b>	8B – vegetated low banks			

**Site Images**

Upstream



Downstream



Straight Across



**RR = River Right RL = River Left**

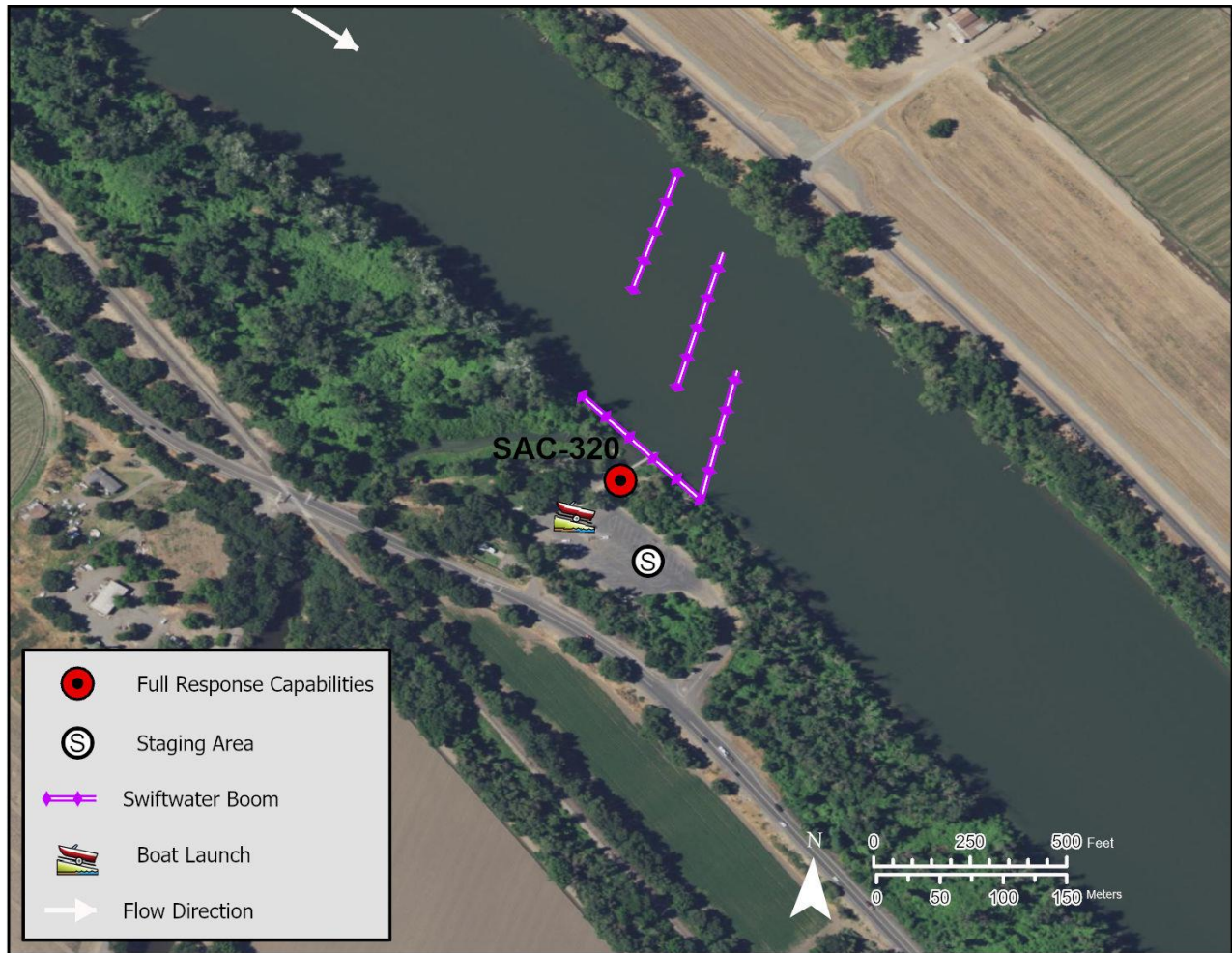
**Photo Date:** 8/22/2019

**Site Objectives:** Deflection/Collection

**Implementation:** Cascade 3 – 400-foot legs of boom toward boat launch for collection; use 300 feet of boom to line shoreline and use to collect product.

**Staging Area Location and Capabilities/Amenities/Waste Management:** Staging area on site.

**Response Strategy Map (overview)**



**Table of Response Resources**

Type	Sub-Type	Size	Unit	QTY - Unit	Special Equipment or Comments
Boom	Swiftwater	6 in x 6 in	ft	1,500	
Anchors	Danforth	25	lb	15	
Stakes				6	Use to secure boom to shore
Boat		25	ft	2	Response vessel
Personnel				8	2 people on each vessel, 4 people on the shore