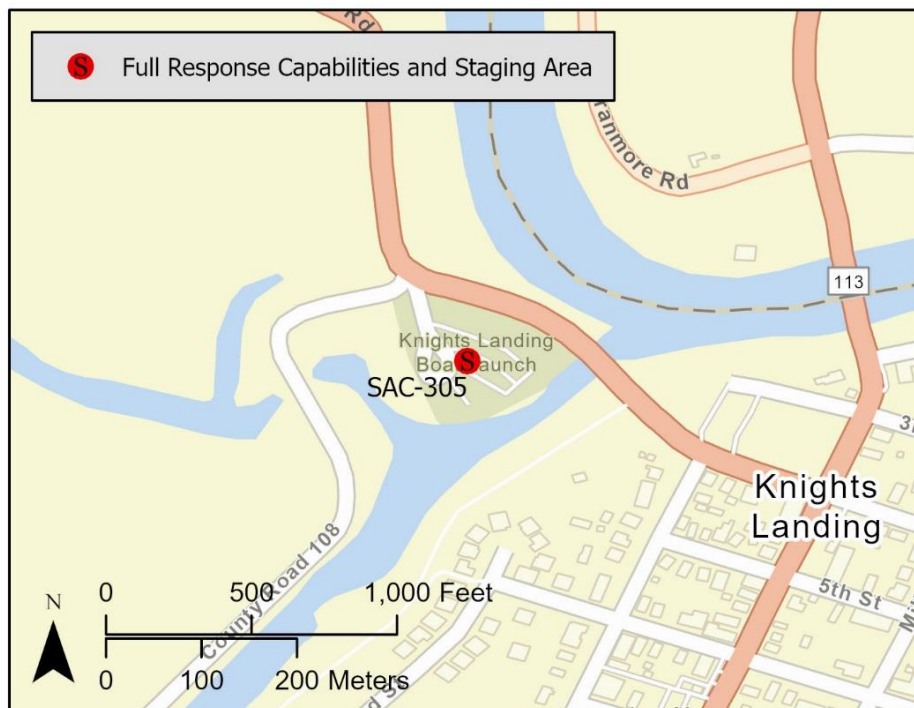


Driving Directions:		<p>From South: Use I-80 East to CA-113 North. Take Exit 538 from I-5 North toward Yuba City. Right onto CA-113 North/North East Street. Right onto County Road 17. Left onto County Road 102. Continue onto CA-113 North. Left onto CA-45 and left into parking area.</p> <p>From North: Use I-5 South. Take Exit 548 toward Zamora. Continue on County Hwy E10. Drive to CA-113 North in Knights Landing. Left on CA-45 and left into parking area.</p>	
Latitude: 38.8005	Highway Postmile: YOLO 0.123	Railroad Milepost: N/A	Cell Service: Yes – Verizon tested
Nearest Address: 9350 Hwy 45, Knights Landing, CA, 95645 Thomas Guide #: 163/3C			

Overview Street Map



Hazards, Restrictions and Advice for Responders

- Trip and fall hazards, slippery when icy or wet
- Fast moving water at times of high flow
- Submerged objects
- Narrow foot path along river's edge

Resources-At-Risk

Ecological: Swainson's Hawk, Eulachon, Longfin Smelt, Sacramento Splittail, Steelhead – Central Valley DPS

Economic: Sting Rayz Beach Boardwalk, Colusa basin drainage canal, high use recreational fishing area.

Tribal: Contact the Native American Heritage Commission at (916) 373-3710.

Cultural and Historic: Contact the Northwest Information Center at (707) 664-0880.

Site Description and Field Notes

<p>Site Location/Segment: SAC-YL-A-020</p>	<p>Site Description and Field Notes: Boat launch is into a short unnamed slough just off of Sacramento River. There is a dam at the end of the slough. Foot trail along shore from parking area, under the overpass to along the river right shoreline. Moderately vegetated along both shores. Large parking area with facilities, good staging area.</p>			
<p>Gradient: Low</p>	<p>River Width: 26 m (85 feet)</p>	<p>Vehicular Access? Only vehicle access near shoreline is down the boat ramp</p>	<p>Recreational Use? Fishing, rafting</p>	<p>Boat Launches: Boat launch on site</p>
<p>Site Contact/s:</p>	<p>Yolo County Parks (530) 406-4880-7837</p>			
<p>ESI Shoreline Type:</p>	<p>9B – vegetated low banks</p>			

Site Images

Upstream



Downstream



Straight Across



RR = River Right RL = River Left

Photo Date: 12/16/2019

Site Objectives: Deflection/Collection

Implementation: Deploy 2 – 300-foot legs of boom to deflect product toward river right shore, deploy 2 – 300-foot leg of boom from river right shore to collect product and 200 feet to protect the shoreline, collect product in slow water near mouth of the tributary; deploy 200 feet of boom to protect water intake; use 200 feet of sorbent to line river right shore near collection area.

Staging Area Location and Capabilities/Amenities/Waste Management: Staging area on site.

Response Strategy Map (overview)

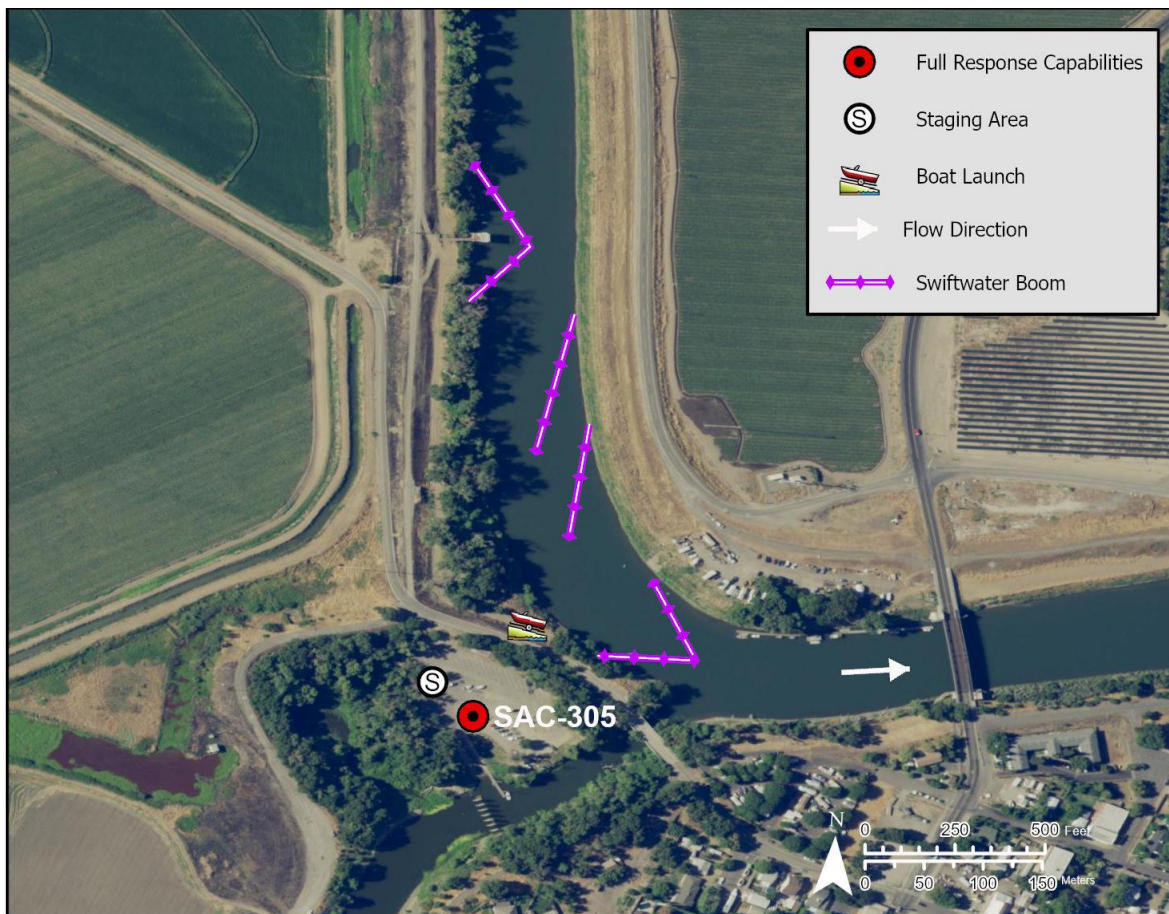


Table of Response Resources

Type	Sub-Type	Size	Unit	QTY - Unit	Special Equipment or Comments
Boom	Swiftwater	6 in x 6 in	ft	1,600	
Boom	Sorbent			200	
Anchors	Danforth	25	lb	16	
Stakes				12	Use to secure boom to shore
Boat	Response vessel	25	ft	2	
Personnel				8	2 people on each vessel, 4 people on the shore