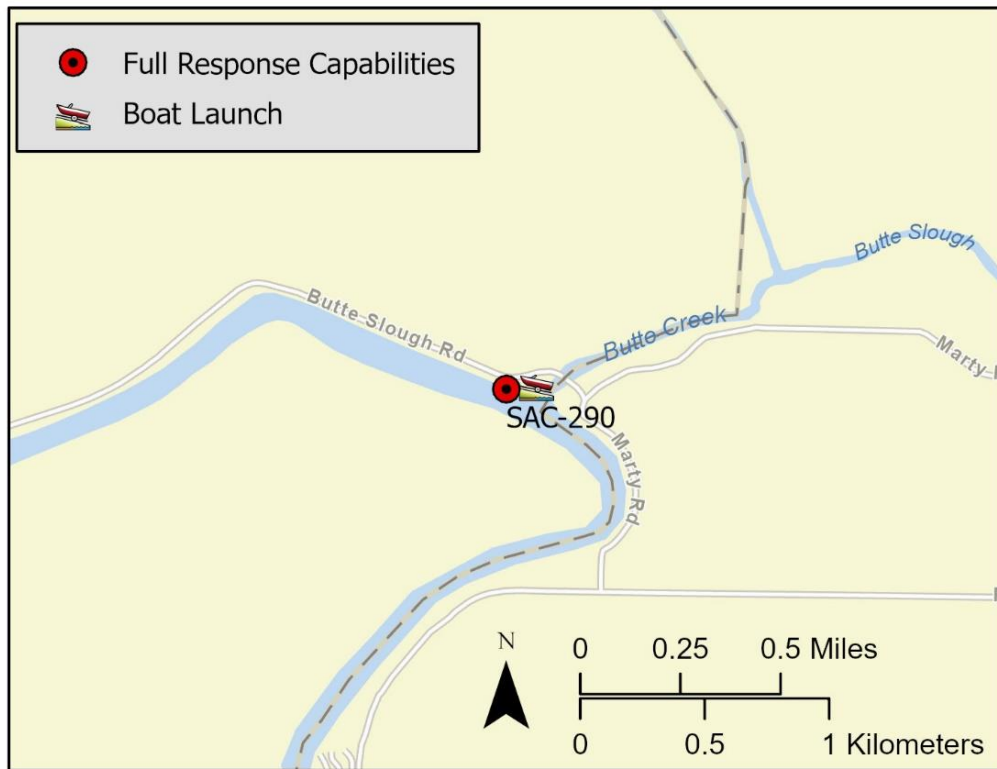


Driving Directions:		From North: Use I-5 South, take Exit 586 toward Maxwell Road. Left onto Maxwell Colusa Road. Right onto CA-45S. Right onto Butte Slough Road and continue to Ward's Boat Landing.	
		From South: Use I-5 North, take Exit 569. Left onto Lone Star Road. Right onto State Hwy-20E. Right onto Market Street thru Colusa.	
Latitude: 39.1945	Highway Postmile:	Railroad Milepost: N/A	Cell Service: Yes – Verizon tested
Longitude: -121.9383	N/A		
Nearest Address: 2701 Butte Slough Road, Colusa, CA, 95932 Thomas Guide #: 169/B2			

Overview Street Map



Hazards, Restrictions and Advice for Responders

- Trip and fall hazards, slippery when icy or wet
- Fast moving water at times of high flow
- Downed trees near shore
- Submerged objects
- Steep banks
- Potential shallow water conditions when launching boat

Resources-At-Risk

Ecological: Swainson's Hawk, Western Yellow-billed Cuckoo, Steelhead – Central Valley DPS, Valley Elderberry Longhorn Beetle

Economic: Ward's Boat Landing, water intakes in the vicinity.

Tribal: Contact the Native American Heritage Commission at (916) 373-3710.

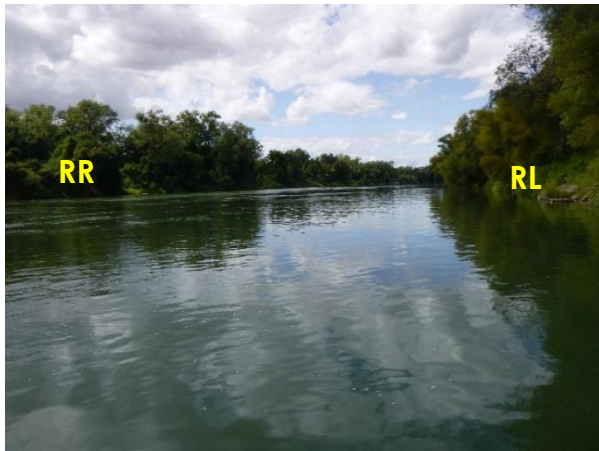
Cultural and Historic: Contact the Northwest Information Center at (707) 664-0880.

Site Description and Field Notes

<p>Site Location/Segment: SAC-CO-A-055</p>	<p>Site Description and Field Notes: Site is a small RV park with full-time residents. There is limited parking with 1 small bathroom on site. There is no access to the shoreline due to the abundance of heavy vegetation. Lovey's Landing (south of Ward's) may offer an additional observation area, with very limited access to the shoreline.</p>			
<p>Gradient: Medium</p>	<p>River Width: 105 m (345 ft)</p>	<p>Vehicular Access? No vehicular access to shoreline</p>	<p>Recreational Use? Fishing, boating</p>	<p>Boat Launches: Boat launch on site</p>
<p>Site Contact/s:</p>	<p>Ward's Boat Landing (530) 696-2672</p>			
<p>ESI Shoreline Type:</p>	<p>9B – vegetated low banks</p>			

Site Images

Upstream



Downstream



Straight Across



RR = River Right RL = River Left

Photo Date: 9/18/2019

Site Objectives: Collection/Exclusion

Implementation: Cascade 3 - 400-foot legs of boom at steep angle to collect product just upstream of boat docks, use 300 feet of boom to line shoreline and form a collection pocket. Place 900 feet of boom around boat docks to protect boats from getting impacted and place boom in a chevron to prevent product from entering cove/canal.

Staging Area Location and Capabilities/Amenities/Waste Management: On-site staging is limited.

Response Strategy Map (overview)

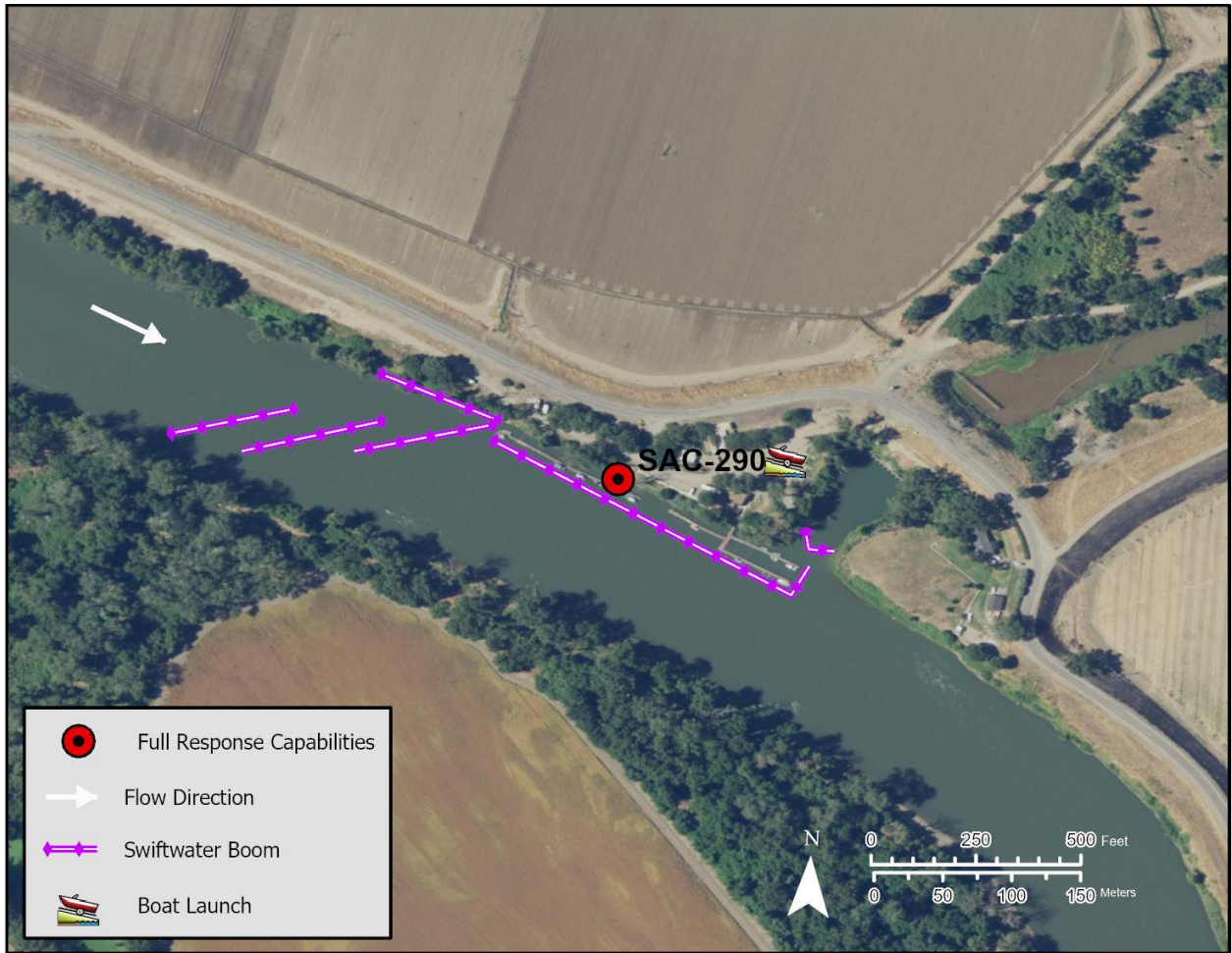


Table of Response Resources

Type	Sub-Type	Size	Unit	QTY - Unit	Special Equipment or Comments
Boom	Swiftwater	6 in x 6 in	ft	2,400	
Anchors	Danforth	25	lb	21	
Stakes				6	Use to secure boom to shore
Boat	Response vessel	25	ft	2	
Personnel				8	2 people on each vessel, 4 people on the shore