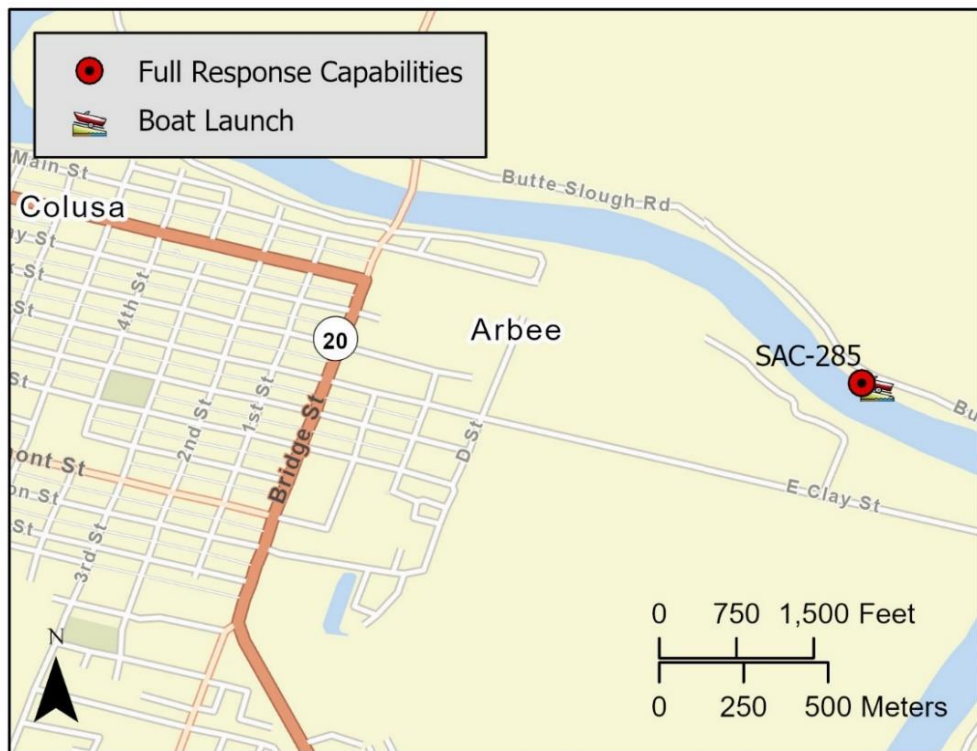


<b>Driving Directions:</b>	From North: Use I-5 South, take Exit 586 toward Maxwell Road. Left onto Maxwell Colusa Road. Right onto CA-45S. Right onto Butte Slough Road. and continue to Colusa Landing.		
	From South: Use I-5 North, take Exit 569. Left onto Lone Star Road. Right onto State Hwy-20E. Right onto Market Street thru Colusa.		
<b>Latitude:</b> 39.2097 <b>Longitude:</b> -121.9880	<b>Highway Postmile:</b> N/A	<b>Railroad Milepost:</b> N/A	<b>Cell Service:</b> Yes – Verizon tested

**Nearest Address:** 3249 Butte Slough Road, Colusa, CA, 95932 **Thomas Guide #:** 169/B2

**Overview Street Map**



**Hazards, Restrictions and Advice for Responders**

- Trip and fall hazards, slippery when icy or wet
- Fast moving water at times of high flow
- Downed trees near shore
- Submerged objects
- Steep banks
- Steep launch area

**Resources-At-Risk**

**Ecological:** Tricolored Blackbird, Swainson's Hawk, Steelhead – Central Valley DPS

**Economic:** Colusa Landing & RV Rentals, Rocco's on the River, water diversions in the immediate area.

**Tribal:** Contact the Native American Heritage Commission at (916) 373-3710.

**Cultural and Historic:** Contact the Northwest Information Center at (707) 664-0880.

**Site Description and Field Notes**

<p><b>Site Location/Segment:</b> SAC-CO-A-050</p>	<p><b>Site Description and Field Notes:</b> Boat launch and marina on site with a small, narrow parking lot. RV rental spaces available. Limited facilities on site. Rocco's on the River restaurant shares the parking area. Limited direct shoreline access.</p>			
<p><b>Gradient:</b> High</p>	<p><b>River Width:</b> 90m (294ft)</p>	<p><b>Vehicular Access?</b> No vehicular access to shoreline</p>	<p><b>Recreational Use?</b> Fishing, boating</p>	<p><b>Boat Launches:</b> Boat launch on site</p>
<p><b>Site Contact/s:</b></p>	<p>Rocco's on the River (530) 458-7837</p>	<p>Colusa Landing (530) 458-2118</p>		
<p><b>ESI Shoreline Type:</b></p>	<p>9B – vegetated low banks</p>			

**Site Images**

Upstream



Downstream



Straight Across



RR = River Right RL = River Left

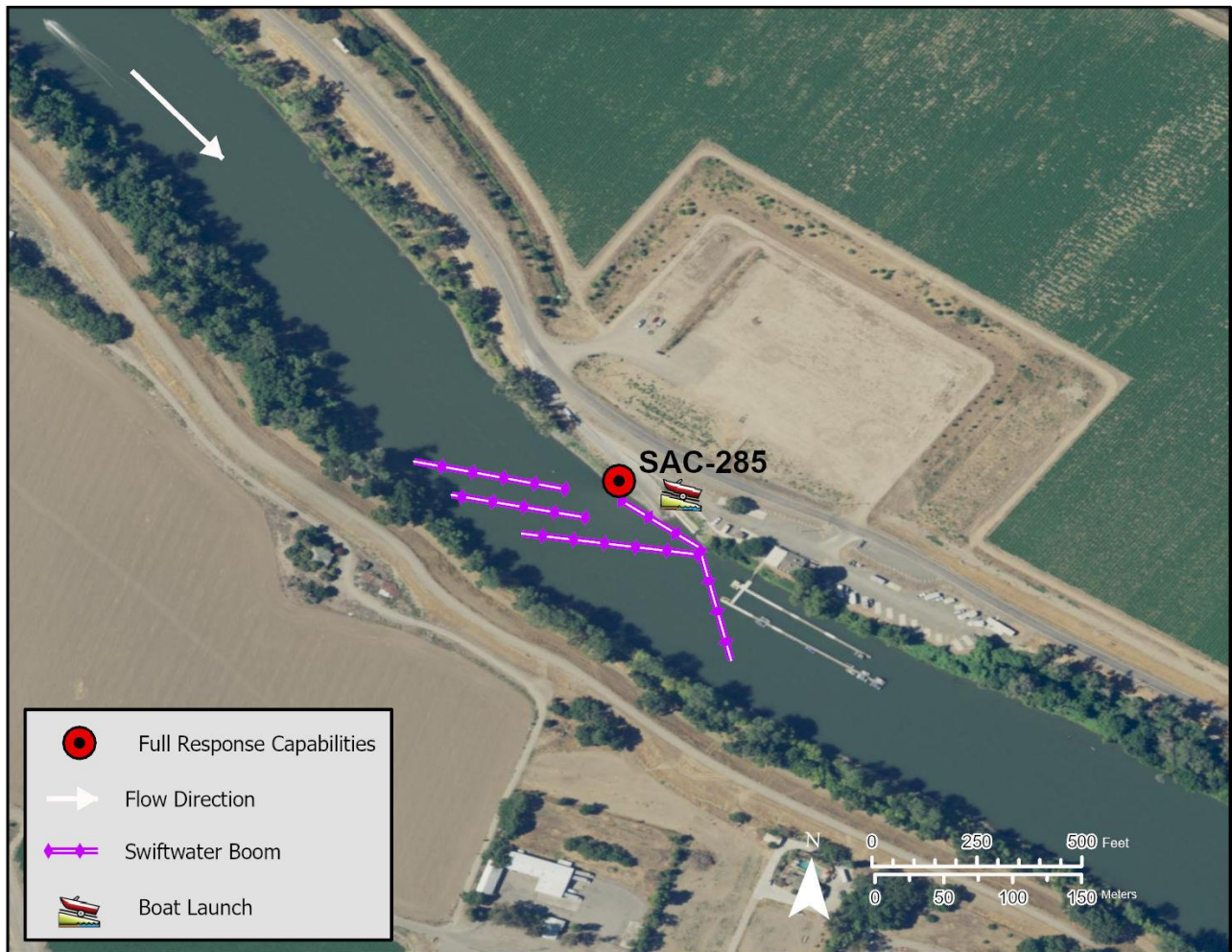
Photo Date: 9/18/2019

**Site Objectives:** Deflection/Collection

**Implementation:** Cascade 3 – 400-foot lengths of boom at steep angle to collect product at boat launch. Use 300 feet of boom to line shoreline and collect product. Place 200 feet of deflection boom just ahead of boat docks to deflect product away from boat docks.

**Staging Area Location and Capabilities/Amenities/Waste Management:** On-site staging is limited. There is the ability to stage vac trucks for product collection on site.

**Response Strategy Map (overview)**



**Table of Response Resources**

Type	Sub-Type	Size	Unit	QTY - Unit	Special Equipment or Comments
Boom	Swiftwater	6 in x 6 in	ft	1,700	
Anchors	Danforth	25	lb	17	
Stakes				6	Use to secure boom to shore
Boat	Response vessel	25	ft	2	
Personnel				8	2 people on each vessel, 4 people on the shore