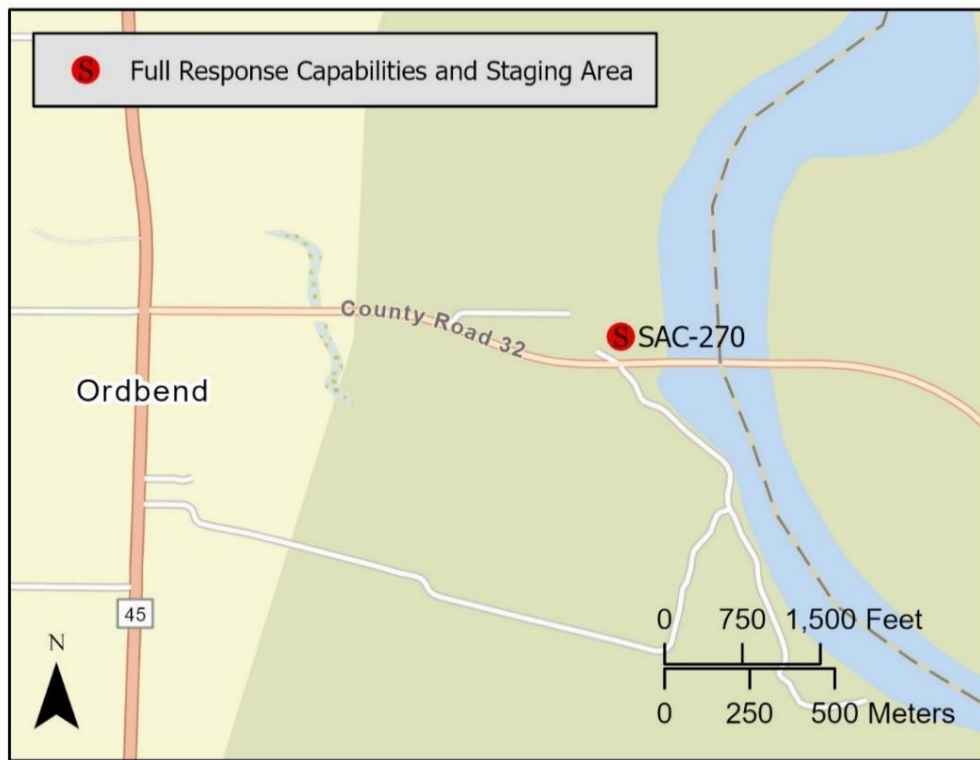


<b>Driving Directions:</b>	From North: Use I-5 South, take Exit 619 for CA-32 toward Orland/Chico. Turn right onto CA-45 S/Canal St. Left onto County Road 32. Left into Ord Bend Park Boat Launch.		
	From South: Use I-5 North, take Exit 569 for Hahn Road. Turn right on Hahn Rd. Left on Lone Star Road. Right on Hwy-20. Left on Market Street (in Colusa), continue onto CA-45/13 <sup>th</sup> Street. Right onto County Rd-32, turn into Ord Bend Park.		
<b>Latitude:</b> 39.6299	<b>Highway Postmile:</b> GLE 15.169	<b>Railroad Milepost:</b> N/A	<b>Cell Service:</b> Yes – Verizon tested
<b>Longitude:</b> -121.9943			

**Nearest Address:** 8201 Ord Ferry Rd., Glenn, CA, 95943 **Thomas Guide #:** 163/3B

**Overview Street Map**



**Hazards, Restrictions and Advice for Responders**

- Trip and fall hazards, slippery when icy or wet
- Fast moving water at times of high flow
- Downed trees near shore
- Submerged objects

**Resources-At-Risk**

**Ecological:** Bank Swallow, Steelhead – Central Valley DPS, Giant Garter Snake

**Economic:** Fishing guide services

**Tribal:** Contact the Native American Heritage Commission at (916) 373-3710.

**Cultural and Historic:** Contact the Northeast Information Center at (530) 898-6256.

**Site Description and Field Notes**

<p><b>Site Location/Segment:</b> SAC-GL-B-035</p>	<p><b>Site Description and Field Notes:</b> Heavily vegetated banks on river right; gravel shoreline on river left. Large parking area with facilities that could be used as a staging area. Roads in the area are subject to flooding. No public access to river left. Inlet that leads to boat launch is dynamic and is subject to change from year to year.</p>			
<p><b>Gradient:</b> Medium</p>	<p><b>River Width:</b> 118.87 m (390 ft)</p>	<p><b>Vehicular Access?</b> No access along shoreline</p>	<p><b>Recreational Use?</b> Fishing, rafting</p>	<p><b>Boat Launches:</b> Boat launch facility on site</p>
<p><b>Site Contact/s:</b></p>	<p>Glenn County Parks (530) 934-6545</p>			
<p><b>ESI Shoreline Type:</b></p>	<p>9B – vegetated low banks, 6A – gravel beaches</p>			

**Site Images**

Upstream



Downstream



Straight Across



**RR = River Right RL = River Left**

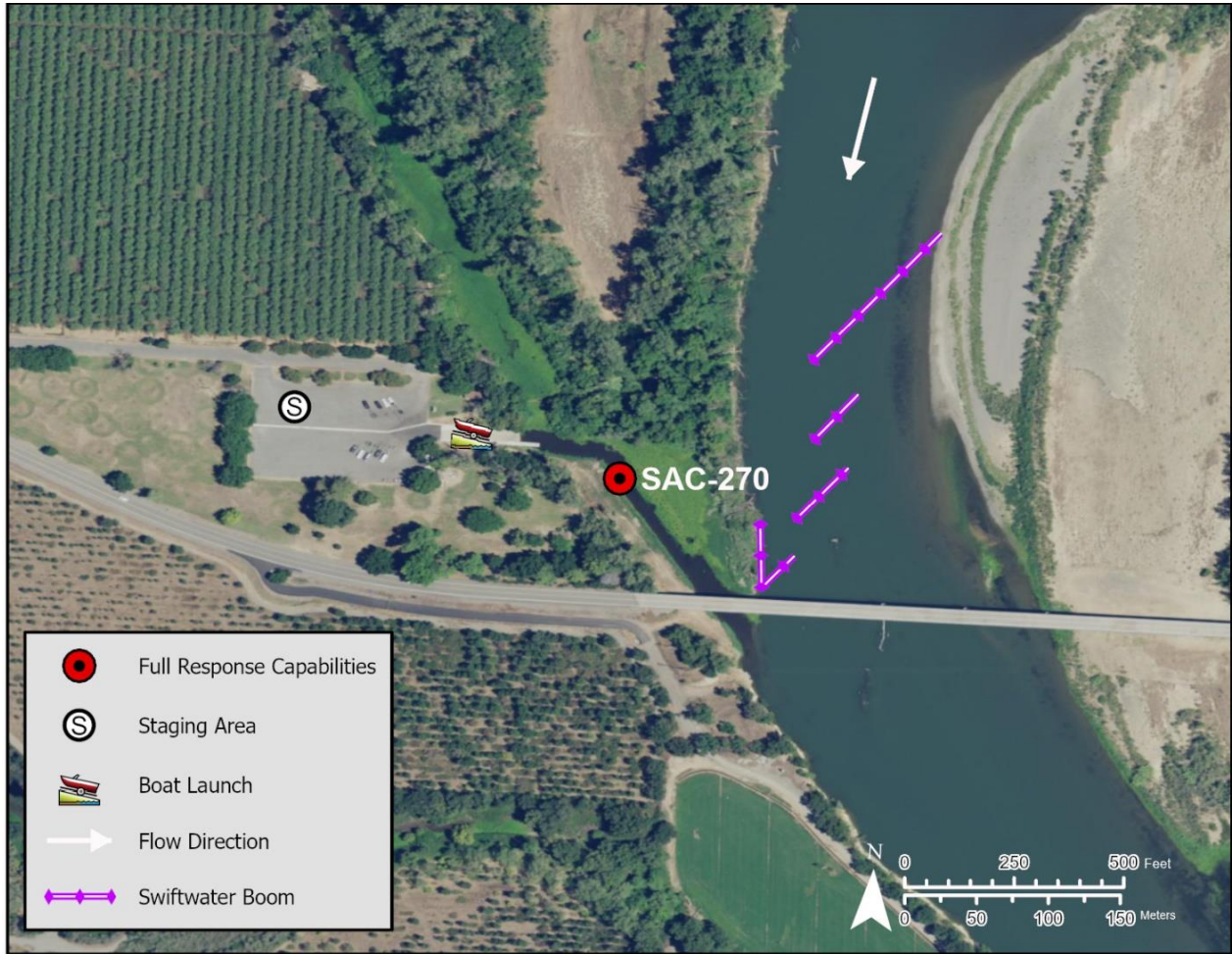
**Photo Date:** 9/18/2019

**Site Objectives:** Deflection/collection

**Implementation:** Cascade using 4 - 300-foot sections of boom from river left shoreline to the river right shoreline just below the inlet. Use additional 150 feet of boom to protect shoreline near collection area.

**Staging Area Location and Capabilities/Amenities/Waste Management:** Staging on site

**Response Strategy Map (overview)**



**Table of Response Resources**

Type	Sub-Type	Size	Unit	QTY - Unit	Special Equipment or Comments
Boom	Swift Water Boom	6 in x 6 in	ft	1,350	
Anchors	Danforth	25	lb	11	
Stakes				6	Used to secure boom to shore
Boat		25	ft	2	Support Vessel
Personnel				8	2 people on each boat, and 4 on the shore