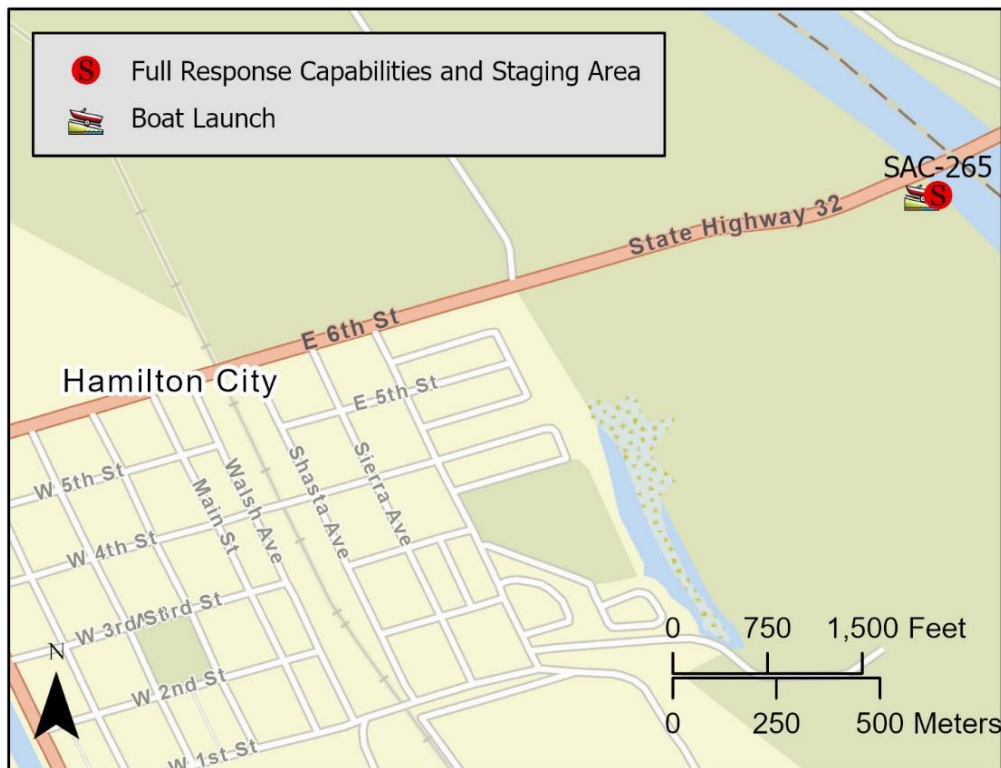


Driving Directions:		From North: Take Exit 630 off I-5 onto South Avenue and head east. Continue east on From North: Use I-5 South, take Exit 621. Turn left onto I-5 BUS, turn right to stay on I-5 BUS, left onto Road 9. Right onto 6 Avenue. Turn left onto CA-32E to Irvine Finch River Access Road.	
		From South: Use I-5 North, take Exit 619 for CA-32 toward Orland Chico. Right on CA-32. Right onto Irvine Finch Access Road.	
Latitude: 39.7502	Highway Postmile:	Railroad Milepost: N/A	Cell Service: Yes – Verizon tested
Longitude: -121.9970	GLE 10.87		
Nearest Address: Irvine Finch River Access Rd, Chico, CA 95973, Thomas Guide #: 163/3B			

Overview Street Map



Hazards, Restrictions and Advice for Responders

- Trip and fall hazards, slippery when icy or wet
- Fast moving water at times of high flow
- Downed trees near shore
- Submerged objects

Resources-At-Risk

Ecological: Bank Swallow, Steelhead – Central Valley DPS

Economic: Fishing guide services

Tribal: Contact the Native American Heritage Commission at (916) 373-3710.

Cultural and Historic: Contact the Northeast Information Center at (530) 898-6256.

Site Description and Field Notes

Site Location/Segment: SAC-GL-B-005	Site Description and Field Notes: Dense riparian habitat along shoreline. Large parking area with facilities that could make for a good staging area. Part of the Bidwell-Sacramento River State Park.			
Gradient: Medium	River Width: 194.77 m (639 ft)	Vehicular Access? Vehicle accessibility to the water's edge on the boat ramp	Recreational Use? Rafting, fishing	Boat Launches: Boat launch on site
Site Contact/s:	Bidwell-Sacramento River St Park (530) 342-5185			
ESI Shoreline Type:	9B – Vegetated low banks			

Site Images

Upstream



Downstream



Straight Across



RR = River Right RL = River Left

Photo Date: 9/18/2019

Site Objectives: Deflection/Collection

Implementation: Cascade from bridge using 4 – 400-foot lengths of boom and angle towards collection point at boat ramp. Use 300 feet of boom to line shoreline and collection area.

Staging Area Location and Capabilities/Amenities/Waste Management: Staging can be done at the parking area on site.

Response Strategy Map (overview)

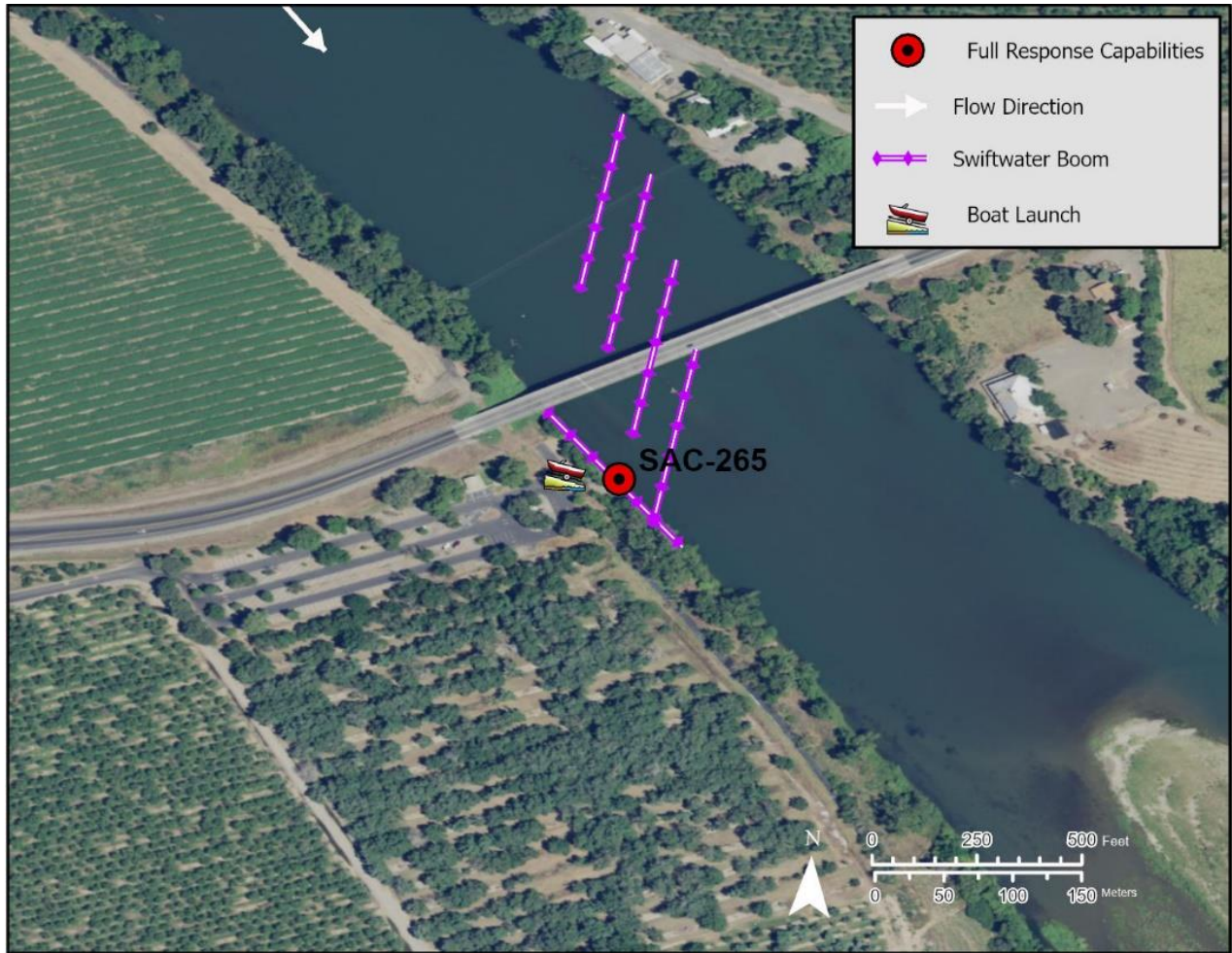


Table of Response Resources

Type	Sub-Type	Size	Unit	QTY - Unit	Special Equipment or Comments
Boom	Swift Water Boom	6 in x 6 in	ft	1,900	
Anchors	Danforth	22	lb	19	
Stakes				6	Used to secure boom to shore
Boat	Response and Boom Vessel	25	ft	2	Use response vessels
Personnel				8	2 people would be on each response vessel