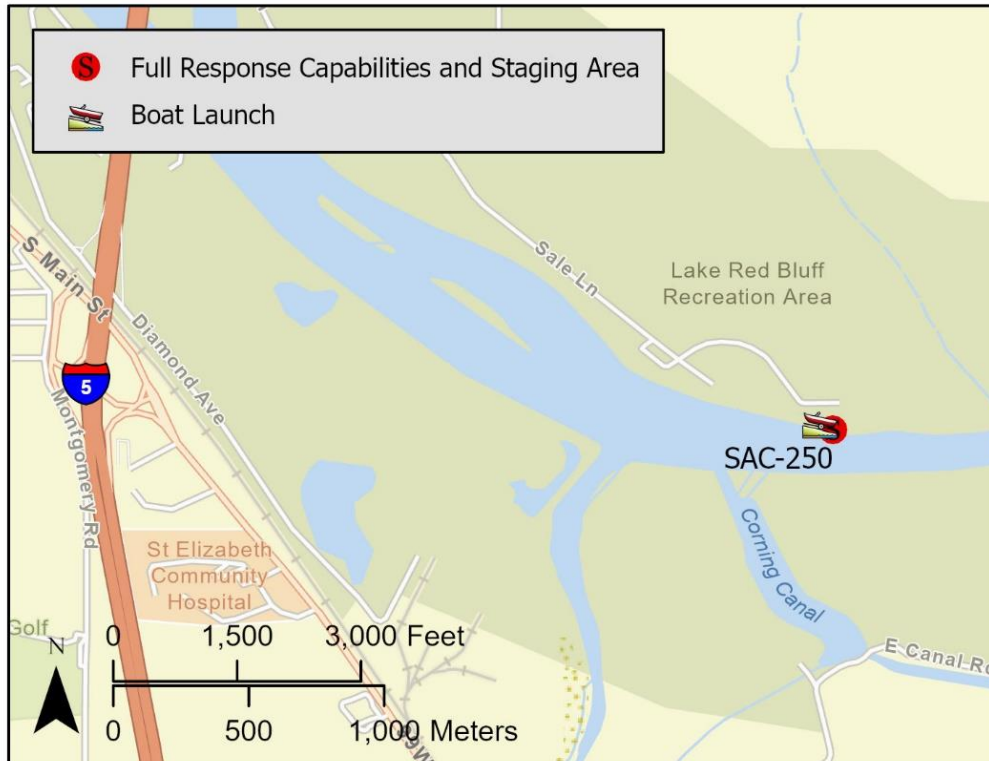


Driving Directions:	Take Exit 649 off I-5 and head east on Antelope Blvd./Hwy 36 East for approximately 0.4 miles and turn south onto Sale Lane. Continue south on Sale Lane approximately 2.8 miles and enter Sycamore Grove Campground.		
Latitude: 40.1537 Longitude: -122.1991	Highway Postmile: N/A	Railroad Milepost: N/A	Cell Service: Yes – Verizon tested
Nearest Address and Thomas Guide #: N/A			

Overview Street Map



Hazards, Restrictions and Advice for Responders

- Boat launch and campground gate is locked after hours.
- Swift water with possible submerged objects.
- Red Bluff Diversion Dam is located upstream of the boat ramp.
- The Tehama-Colusa Canal Authority operates a water intake and pumping station along the river right shoreline above Red Bluff Diversion Dam.

Resources-At-Risk

Ecological: Bank Swallow, Least Bell's Vireo, Pallid Bat, Western Red Bat, Chinook Salmon – Central Valley Spring-run ESU, Chinook Salmon – Sacramento River Winter-run ESU, Green Sturgeon, Steelhead – Central Valley DPS

Economic: Sycamore Grove Campground, fishing guide services, local tourism, Tehama-Colusa Canal Authority (intake located above boat ramp)

Tribal: Contact the Native American Heritage Commission at (916) 373-3710.

Cultural and Historic: Contact the Northeast Information Center at (530) 898-6256.

Site Description and Field Notes

Site Location/Segment: SAC-TE-B-020	Site Description and Field Notes: Site consists of a campground and boat launch with showers and bathrooms on site.			
Gradient: High	River Width: 140 m (460 ft)	Vehicular Access? All vehicle types can access this location.	Recreational Use? Fishing, boating, rafting, kayaking, water contact.	Boat Launches: Boat launch facility is located south of the campground.
Site Contact/s:	Mendocino National Forest (530) 934-3316			
ESI Shoreline Type:	1B - exposed solid man-made structures, 9B - vegetated low banks			

Site Images

Upstream



Downstream



Straight Across



RR = River Right RL = River Left

Photo Date: 6/20/2019

Site Objectives: Deflection boom and product collection. Consider cascading boom strategy. Limit shoreline impacts.

Implementation: Starting from the river right shoreline above the boat launch, deploy 2,000 feet of cascading swift water boom toward the collection point at the boat launch. Add additional 300 feet of boom for shoreline protection near the collection area. Pump recovered product directly to vacuum truck on shore.

Staging Area Location and Capabilities/Amenities/Waste Management: Stage equipment and manage wastes in boat launch parking lot.

Response Strategy Map (overview)

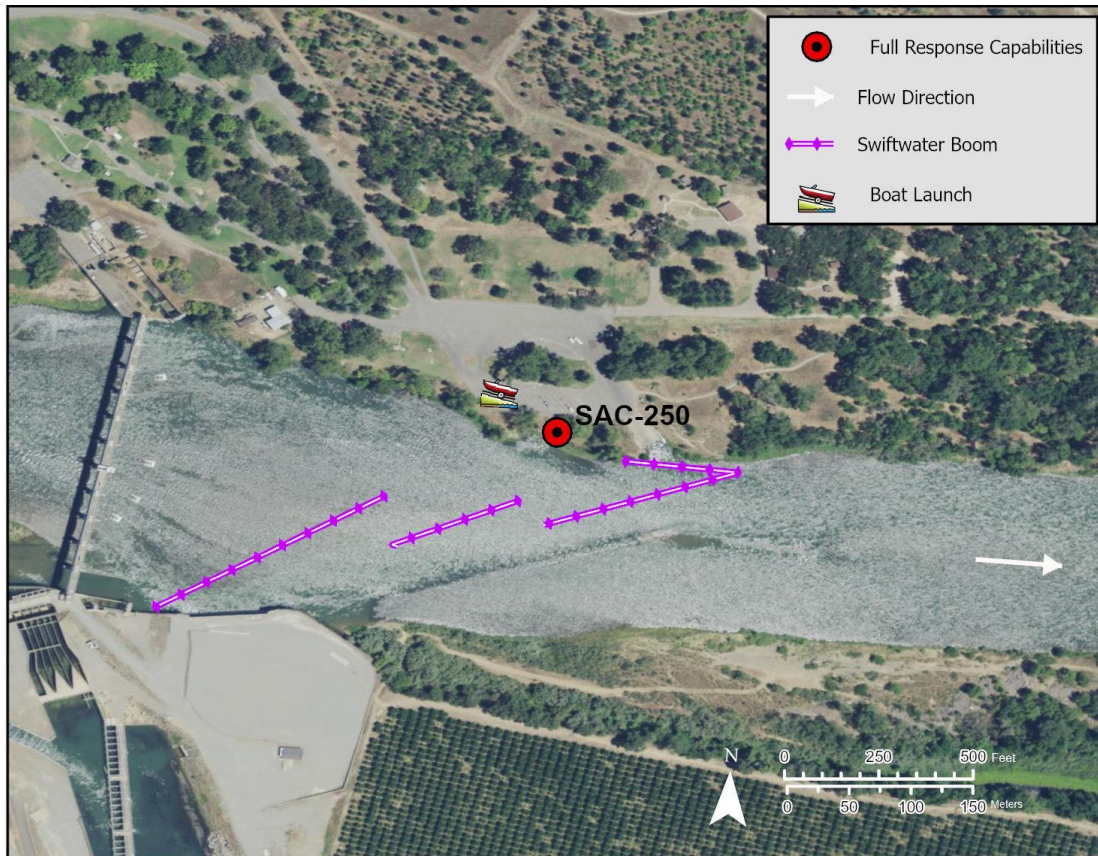


Table of Response Resources

Type	Sub-Type	Size	Unit	QTY - Unit	Special Equipment or Comments
Boom	Swift Water Boom	6 in x 6 in	ft	2,300	Includes 300 feet of boom for shoreline protection at collection point.
Anchors	Danforth	25	lb	23	
Stakes				6	Used to secure boom to shore
Boat	Response and Boom Vessel	25	ft	2	1 each, minimum
Personnel				6 to 10 crew	2 vessel operators and 2 deckhands, minimum