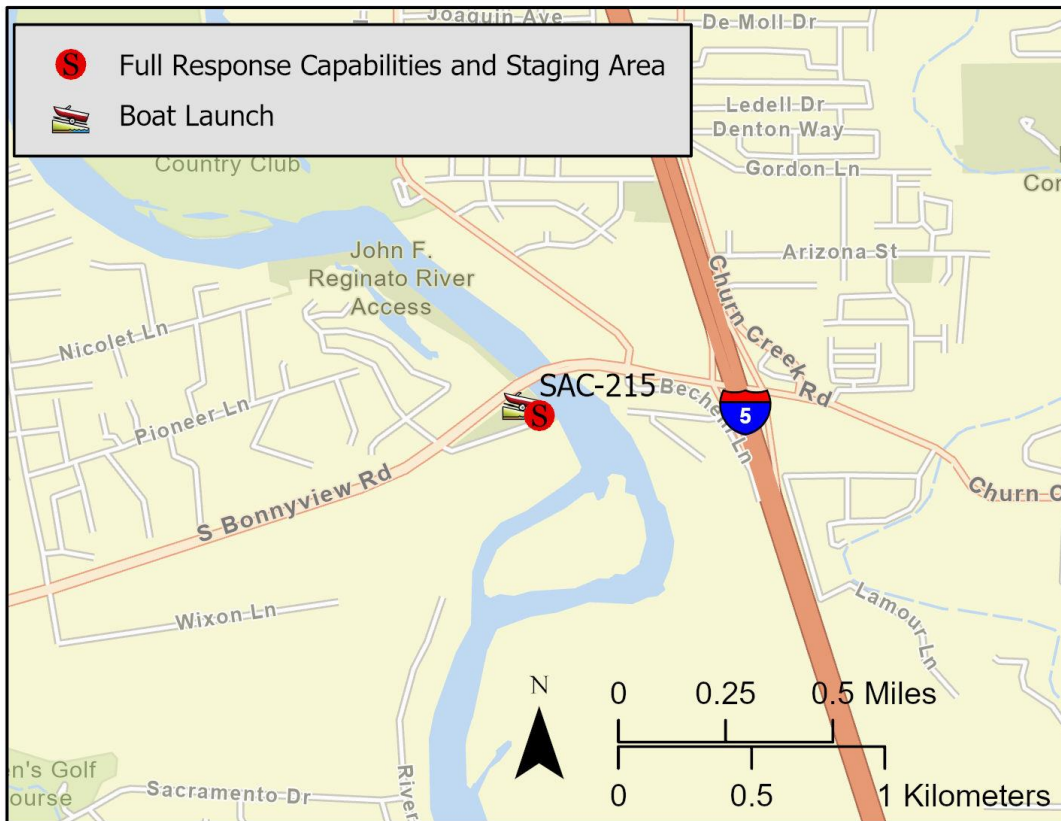


Driving Directions:	From I-5, take Exit 675 and head west on South Bonneyview Road. Cross over the Sacramento River and turn left (south) into the parking lot for the South Bonneyview Boat Launch and John Reginato River Access.		
Latitude: 40.53747	Highway Postmile:	Railroad Milepost: N/A	Cell Service: Yes – Verizon tested
Longitude: -122.35770	N/A		
Nearest Address: 3951 South Bonneyview Road, Redding, CA 96001			

Overview Street Map



Hazards, Restrictions and Advice for Responders

- River currents can be swift in the vicinity of the boat launch.
- Water intake pumps located on the river left shoreline across from the boat launch will need at least 200 feet of exclusion/deflection boom deployed for protection.
- Site elevation is 468 feet msl.
- A trail exists along the river-right shoreline above and below the boat launch.

Resources-At-Risk

Ecological: Bald Eagle, Bank Swallow, Chinook Salmon – Central Valley Spring-run ESU, Chinook Salmon – Sacramento River Winter-run ESU, Steelhead – Central Valley DPS

Economic: Fishing guide services, local tourism

Tribal: Contact the Native American Heritage Commission at (916) 373-3710.

Cultural and Historic: Contact the Northeast Information Center at (530) 898-6256.

Site Description and Field Notes

<p>Site Location/Segment: SAC-SH-D-030</p>	<p>Site Description and Field Notes: Restrooms located on site. Facility closes between 2200 hours and 0500 hours each evening. Nearby lodging and food located off South Bonneyview Road on east side of Sacramento River.</p>			
<p>Gradient: Medium</p>	<p>River Width: 125 m (410 ft)</p>	<p>Vehicular Access? All vehicle types can access this location.</p>	<p>Recreational Use? Fishing, rafting, kayaking, water contact</p>	<p>Boat Launches: South Bonneyview Boat Launch located on site.</p>
<p>Site Contact/s:</p>	<p>City of Redding Parks & Recreation Business Hours: (530) 224-6100 After Hours: (530) 245-2073</p>			
<p>ESI Shoreline Type:</p>	<p>6A - gravel bars and gently sloping banks, 6B - rip rap, 8F - vegetated, steeply sloping bluffs, 9B - vegetated low banks</p>			

Site Images

Upstream



Downstream



Straight Across/Boat Launch



RR = River Right RL = River Left

Photo Date: 1/23/2019

Site Objectives: Deflection boom and product collection. Consider cascading boom set. Limit shoreline impacts. Protect water intake pumps across from boat launch.

Implementation: Deploy 2,000 feet of cascading swift water boom from the river left shoreline above bridge to the boat launch on the river right shoreline. Add additional 200 feet of boom for shoreline protection at the collection area. Additionally, deploy 200 feet of exclusion/deflection boom around water pump intakes across from boat launch. Pump recovered product directly to vacuum truck on shore.

Staging Area Location and Capabilities/Amenities/Waste Management: Stage equipment and manage wastes in parking lot and open space near boat launch.

Response Strategy Map (overview)

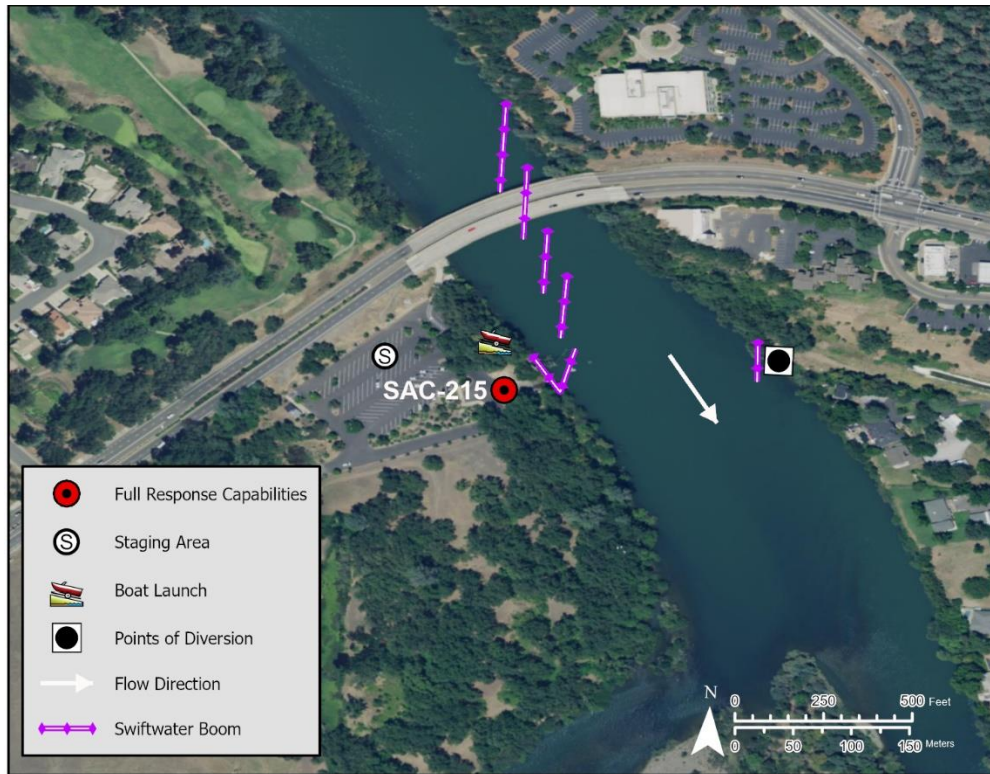


Table of Response Resources

Type	Sub-Type	Size	Unit	QTY - Unit	Special Equipment or Comments
Boom	Swift Water Boom	6 in x 6 in	ft	2,400	Includes 200 feet of boom for shoreline protection and 200 feet of exclusion/deflection boom for water pump intakes.
Anchor	Danforth	25	lb	24	
Boat	Response and Boom Vessel	25	ft	2	1 each, minimum.
Personnel				8	2 vessel operators and 2 deckhands, minimum
Stakes				6	