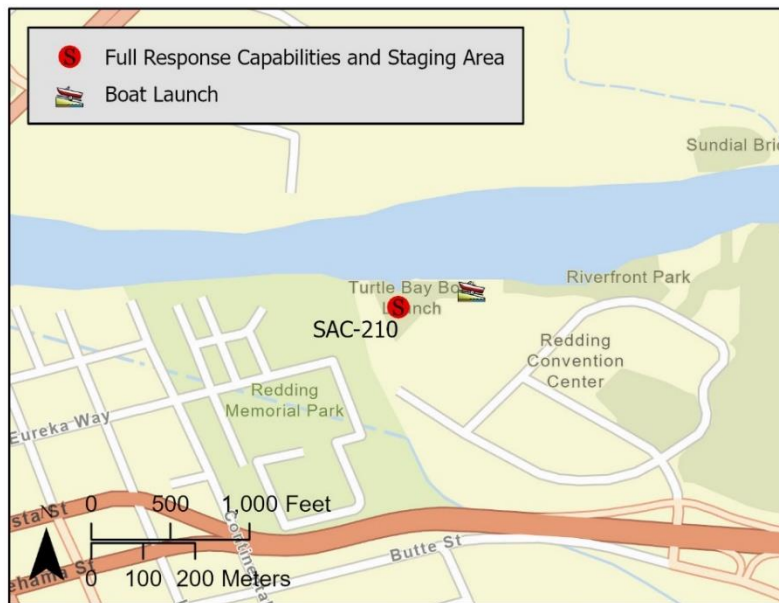


<p>Driving Directions:</p>	<p>From I-5 in Redding, take Exit 678 and merge onto Hwy 44/Hwy 299 west toward Eureka. Follow Hwy 44/Hwy 299 over the Sacramento River. Stay in the righthand lane. Take Exit 1 off of Hwy 44/Hwy 299 onto Sundial Bridge Drive. Follow Sundial Bridge Drive northwest around the Redding Civic Auditorium. Take unmarked paved road along Sacramento River and follow back toward the Redding Rodeo Grounds and the Turtle Bay Boat Launch.</p>		
<p>Latitude: 40.59056 Longitude: -122.38322</p>	<p>Highway Postmile: N/A</p>	<p>Railroad Milepost: UPRR 259.04 – Valley Subdivision, about 0.8 miles upstream</p>	<p>Cell Service: Yes – Verizon tested</p>

Nearest Address: 725 Auditorium Drive, Redding, CA 96001

Overview Street Map



Hazards, Restrictions and Advice for Responders

- There is a drinking water intake in the vicinity of this response site. Contact the City of Redding at (530) 224-6029 and Bella Vista Water District at (530) 241-1085 for additional information and response strategies.
- The Sacramento River can have swift currents at this location.
- Unhoused encampments have been observed in the area.
- Difficult shoreline access near boat launch.
- Site elevation is 490 ft msl.
- Restrooms on site at boat launch. Nearby lodging and restaurant at Sheraton Hotel across from auditorium.

Resources-At-Risk

Ecological: Bald Eagle, Chinook Salmon – Central Valley Spring-run ESU, Chinook Salmon – Sacramento River Winter-run ESU, Steelhead – Central Valley DPS, Foothill Yellow-legged Frog

Economic: Turtle Bay Exploration Park and Sundial Bridge, fishing guide services, local tourism

Tribal: Contact the Native American Heritage Commission at (916) 373-3710.

Cultural and Historic: Contact the Northeast Information Center at (530) 898-6256.

Site Description and Field Notes

<p>Site Location/Segment: SAC-SH-D-010</p>	<p>Site Description and Field Notes: Redding Civic Auditorium hosts educational classes during weekdays and special events on various dates and times. Redding Posse Grounds host special events. Sundial Bridge is local tourist attraction.</p>			
<p>Gradient: Low to High, depending on season and river flow</p>	<p>River Width: 143 m (470 ft)</p>	<p>Vehicular Access? All vehicle types can access this location.</p>	<p>Recreational Use? Boating, rafting, kayaking, fishing, water contact, tourist attraction, special events.</p>	<p>Boat Launches: Turtle Bay Boat Launch on site.</p>
<p>Site Contact/s:</p>	<p>City of Redding Parks & Recreation Business Hours: (530) 224-6100 After Hours: (530) 245-2073</p>			
<p>ESI Shoreline Type:</p>	<p>6A - Gravel bars and gently sloping banks, 8B - sheltered, solid man-made structures, 9B - vegetated low banks</p>			

Site Images

Upstream



Downstream



Straight Across/Boat Launch



RR = River Right RL = River Left

Photo Date: 1/23/2019

Site Objectives: Deflection boom and product collection. Consider cascading boom set. Limit shoreline impacts.

Implementation: There is a good collection eddy along the river right shoreline near the boat launch. Deploy 1,800 feet of cascading swift water boom from the river left shoreline to the boat launch on the river right shoreline. Add additional 200 feet of boom for shoreline protection at the collection area. Pump recovered product directly to vacuum truck on shore.

Staging Area Location and Capabilities/Amenities/Waste Management: Stage equipment and manage wastes in parking lot and open space near boat launch.

Response Strategy Map (overview)

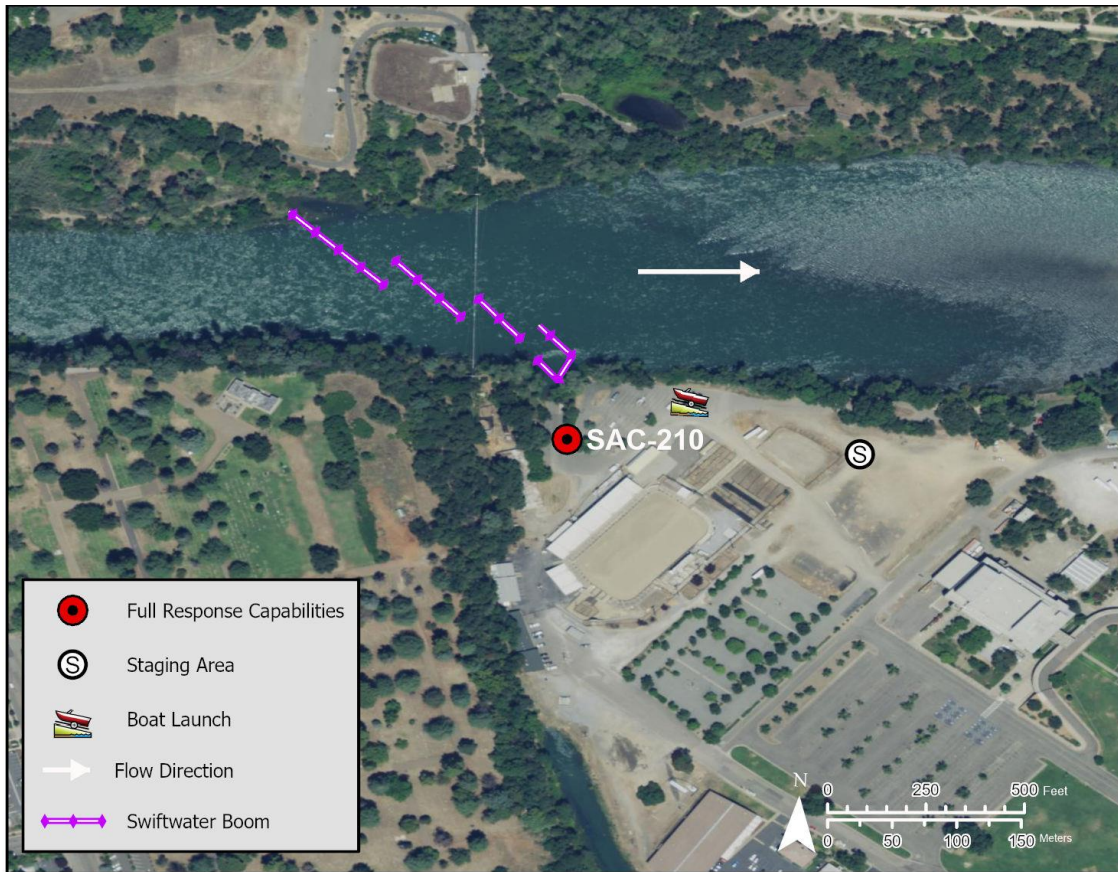


Table of Response Resources

Type	Sub-Type	Size	Unit	QTY - Unit	Special Equipment or Comments
Boom	Swift Water Boom	12 in	ft	2,000	Use 1,800 feet of boom to cascade across river. Use an additional 200 feet to protect shoreline near collection area.
Response Vessel	Response and Boom Vessel			2	1 each, minimum.
Personnel				6 to 10 crew	2 vessel operators and 2 deckhands, minimum
Anchors	Danforth	75 lb 25 lb	lb	8 – 75 12 – 25	