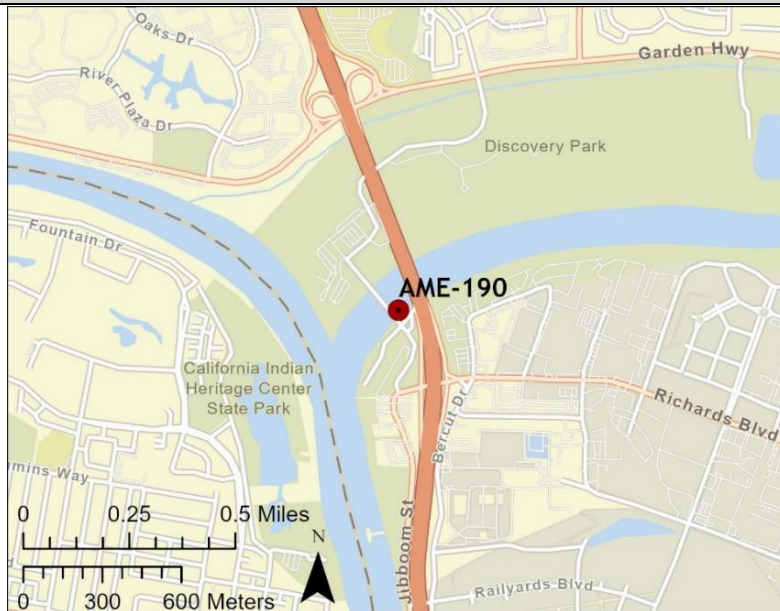


Driving Directions:	From West: Use I-80 East, take Exit 4A to merge onto I-5N toward Redding. Take Exit 520, Richards Blvd, and turn left. Turn right onto Jibboom St, turn right into Discovery Park South Entrance and continue to park.		
	From West: Use I-80 East, take Exit 4A to merge onto I-5N toward Redding. Take Exit 520, Richards Blvd, and turn left. Turn right onto Jibboom St, turn right into Discovery Park South Entrance and continue to park.		
Latitude/Longitude: 38.59951, -121.50553	Highway Postmile: SAC 24.856	Railroad Milepost: N/A	Cell Service: Yes – Verizon Tested

Nearest Address: 200 Jibboom St, Sacramento, CA 95811

Overview Street Map



Hazards, Restrictions and Advice for Responders

- Trip and fall hazards, slippery when icy or wet
- Fast moving water at times of high flow
- Extreme seasonal flooding during strong rain events
- Downed trees near shore
- Submerged objects
- Highly trafficked recreation area
- County Park locked gate after hours
- Unhoused encampments in the area – **Law Enforcement Escort Highly Recommended**

Resources-At-Risk

Ecological: Bald Eagle, Bank Swallow, Burrowing Owl, Least Bell's Vireo, Purple Martin, Song Sparrow-Modesto population, Swainson's Hawk, Tricolored Blackbird, Western Yellow-billed Cuckoo, White-tailed Kite, Delta Smelt, Sacramento Splittail, Steelhead-Central Valley DPS, Giant Garter Snake, Western Pond Turtle, Valley Elderberry Longhorn Beetle, Vernal Pool Fairy Shrimp, Vernal Pool Tadpole Shrimp, Sanford's Arrowhead

Economic: Water intake


Tribal: Contact the Native American Heritage Commission at (916) 373-3710.

Cultural and Historic: Contact the North Central Information Center at (916) 278-6217.

Site Description and Field Notes

<p>Site Location/Segment: AME-SA-J-010</p>	<p>Site Description and Field Notes: Property managed by Sacramento County Regional Parks and open sunrise to sunset. High recreational use area with trails. Gate is locked when closed and park staff can respond to open gate. Unhoused individuals frequently in the area. During high flow and rain events, boat launch and park may be overtaken by flooding.</p>			
<p>Gradient: Low</p>	<p>River Width: 150 m (492 ft)</p>	<p>Vehicular Access: All vehicle types can access this location.</p>	<p>Recreational Use: Rafting, kayaking, fishing, boating, water contact, biking and hiking trails.</p>	<p>Boat Launches: Hand launch boat on site and multi-lane boat launch at Discovery Park.</p>
<p>Site Contact/s:</p>	<p>Sacramento County Regional Parks: (916)-875-7275</p>			
<p>ESI Shoreline Type:</p>	<p>4 – Sandy bars / beaches and gently sloping banks, 9B – Vegetated low banks</p>			

Site Images

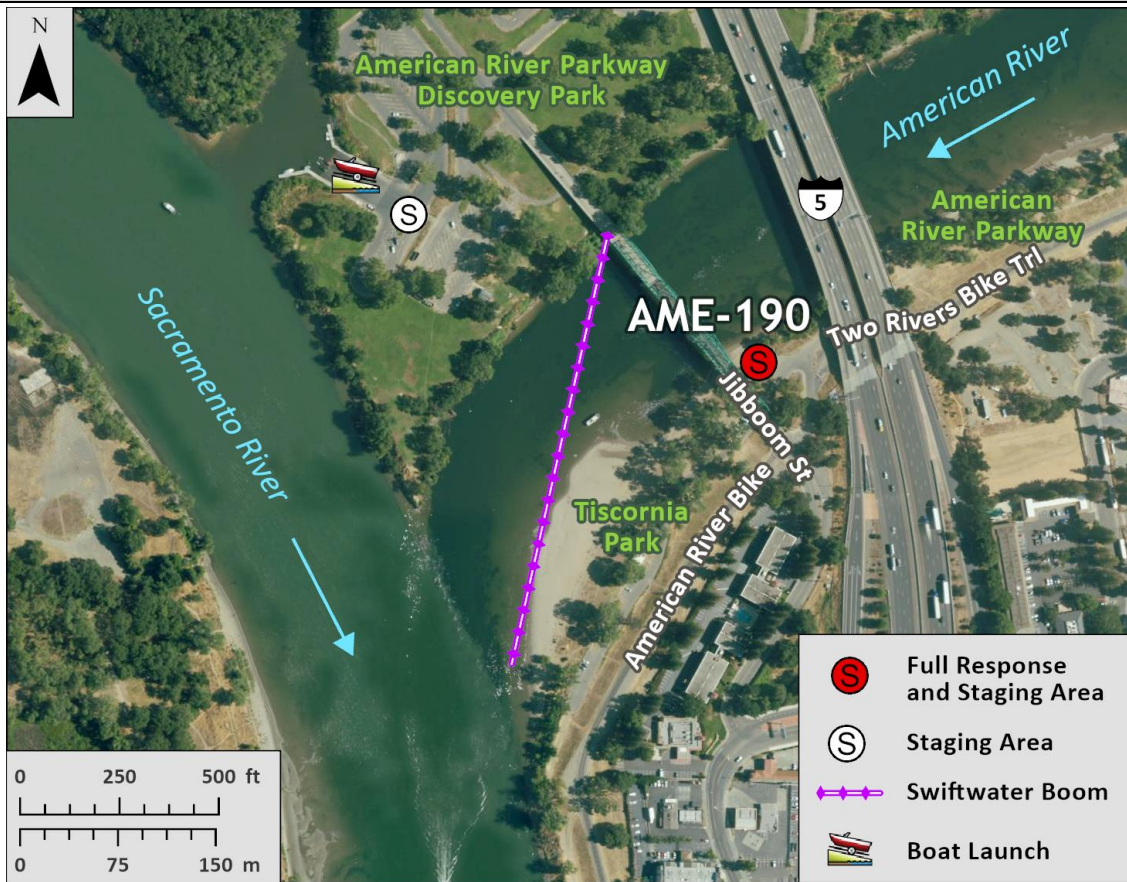
<p>Upstream</p> 	<p>Downstream</p> 
<p>Straight Across</p> 	
<p>RR = River Right RL = River Left</p>	<p>Photo Date: 03/02/2022</p>

Site Objectives: Deflection and collection. Limit shoreline impacts.

Implementation: Side note – During high flow and rain events, boat launch and park may be overtaken by flooding. Deploy swiftwater boom with boats, river right upstream shoreline at 22-degree angle or less, to river left shoreline and protect shoreline with additional boom. Collect product using skimmer/pump to vacuum truck. The staging area can house bins for soft sorbents which should be used in conjunction with hard boom. Additional deflection boom to be used to protect sensitive resources. Common for recreational boaters to be anchored in river at this location, may require adjustment to boom configuration.

Staging Area Location and Capabilities/Amenities/Waste Management: Stage equipment and manage waste in parking lot. Boat ramp and additional staging available at Discovery Park and room for 70 bbl vacuum truck and skimmer. Restrooms on site.

Response Strategy Map (overview)



- S Full Response and Staging Area
- S Staging Area
- Swiftwater Boom
- Boat Launch

Table of Response Resources

Type	Sub-Type	Size	Unit	Quantity	Special Equipment or Comments
Boom	Swiftwater	12-14 in. skirt	Feet	1500	1000 ft rope needed
Anchors	Danforth	25	Pound	3	
Stakes				6	Use to secure boom to shore
Boat		25	Feet	1	Response vessel
Personnel			Crew	6-10	Support for boat and shoreline operations