

**Driving Directions:**

From West: Use I-80 East, continue on I-80BL/I-50E. Take I-80 Business East exit and keep left at the fork to follow signs for I-80 Business/Reno. Take Exit 7B onto H St. Turn left onto F St, turn right onto 28<sup>th</sup> St and continue to park entrance.

From East: Use I-50 West, take Exit 6C for I-80 E toward Reno. Take Exit 7B onto H St. Turn left onto F St, turn right onto 28<sup>th</sup> St and continue to park entrance.

<b>Latitude/Longitude:</b> 38.58834, -121.46193	<b>Highway Postmile:</b> SAC 1.953	<b>Railroad Milepost:</b> N/A	<b>Cell Service:</b> Yes – Verizon Tested
--	------------------------------------	----------------------------------	--

**Nearest Address:** 20 28<sup>th</sup> St, Sacramento, CA 95816

**Overview Street Map**



**Hazards, Restrictions and Advice for Responders**

- Trip and fall hazards, slippery when icy or wet
- Fast moving water at times of high flow
- Downed trees near shore
- Submerged objects
- Highly trafficked recreation area
- Bike trail/skate park
- County/City Park locked gate after hours

**Resources-At-Risk**

**Ecological:** Bald Eagle, Bank Swallow, Burrowing Owl, Purple Martin, Song Sparrow-Modesto population, Swainson's Hawk, Tricolored Blackbird, Western Yellow-billed Cuckoo, White-tailed Kite, Delta Smelt, Sacramento Splittail, Steelhead-Central Valley DPS, Western Pond Turtle, Valley Elderberry Longhorn Beetle, Vernal Pool Fairy Shrimp, Vernal Pool Tadpole Shrimp, Sanford's Arrowhead

**Economic:** Skate park on site in parking lot.

**Tribal:** Contact the Native American Heritage Commission at (916) 373-3710.

**Cultural and Historic:** Contact the North Central Information Center at (916) 278-6217.

**Site Description and Field Notes**

<p><b>Site Location/Segment:</b> AME-SA-I-010</p>	<p><b>Site Description and Field Notes:</b> Property managed by City of Sacramento Department of Parks and Recreation and open sunrise to sunset. High recreational use area with trails. Gate is locked when closed and park staff can respond to open gate. City of Sacramento Corporate Yard onsite and has key access 24/7. High risk area due to Hwy 50 and rail crossings upstream.</p>			
<p><b>Gradient:</b> Low</p>	<p><b>River Width:</b> 130 m (427 ft)</p>	<p><b>Vehicular Access:</b> All vehicle types can access this location.</p>	<p><b>Recreational Use:</b> Rafting, kayaking, fishing, boating, water contact, biking and hiking trails.</p>	<p><b>Boat Launches:</b> Beach area for hand launch of boat.</p>
<p><b>Site Contact/s:</b></p>	<p>Sutter's Landing Corporation Yard (916) 808-5200</p>			
<p><b>ESI Shoreline Type:</b></p>	<p>4 – Sandy bars / beaches and gently sloping banks, 9B – Vegetated low banks</p>			

**Site Images**

Upstream



Downstream



Straight Across



**RR = Right Right    RL = River Left**

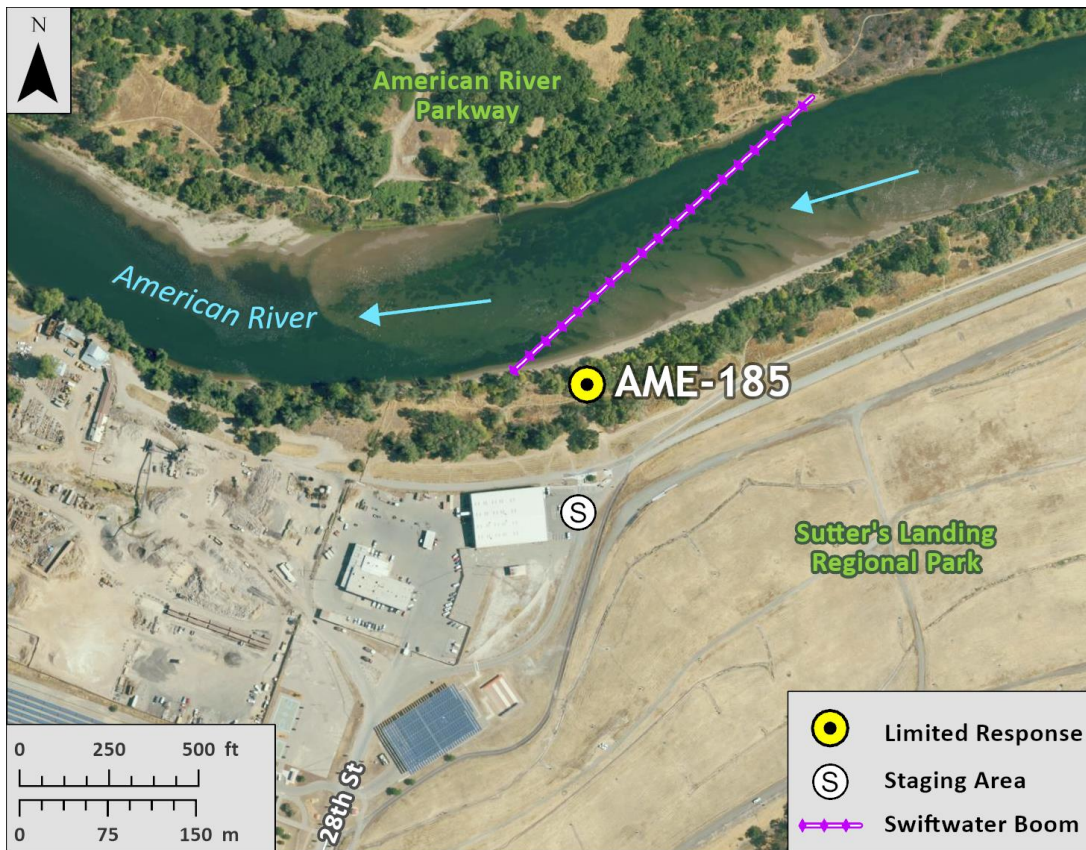
**Photo Date:** 03/02/2022

**Site Objectives:** Deflection and collection. Limit shoreline impacts.

**Implementation:** Deploy swiftwater boom with small boat/kayaks, river right upstream shoreline at 22-degree angle or less, to river left shoreline and protect shoreline with additional boom. May need to implement cascade deflection depending on flow and angle. Additional ropes and anchors recommended for this response strategy. Collect product using skimmer/pump to vacuum truck. The staging area can house bins for soft sorbents which should be used in conjunction with hard boom. Additional deflection boom to be used to protect sensitive resources.

**Staging Area Location and Capabilities/Amenities/Waste Management:** Stage equipment and manage waste in parking lot. Manual labor operation hauling out boom, pads, and kayaks/small boat. Room for 70 bbl vacuum truck and skimmer. Portable restrooms on site.

**Response Strategy Map (overview)**



**Table of Response Resources**

Type	Sub-Type	Size	Unit	Quantity	Special Equipment or Comments
Boom	Swiftwater	12-14 in. skirt	Feet	700	1000 ft rope needed
Anchors	Danforth	25	Pound	3	
Stakes				6	Use to secure boom to shore
Boat	Kayak/small boat			2-3	Response vessel
Personnel			Crew	6-10	Support for boat and shoreline operations