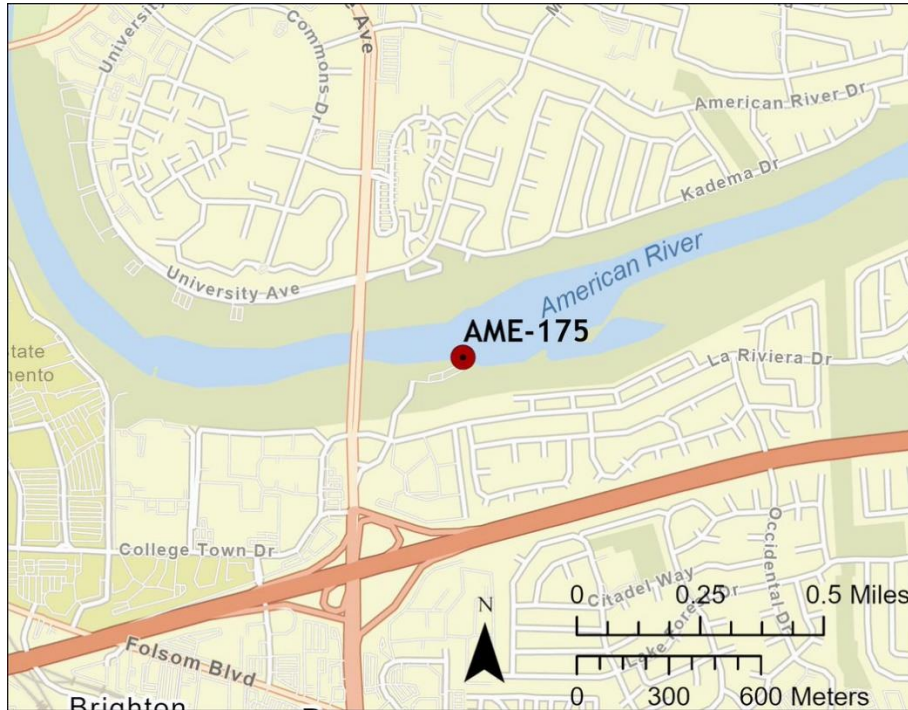


Driving Directions:		From West: Use I-50 East, take Exit 9, Howe Ave, and turn left. Take the exit toward American River Access and continue straight to boat ramp.	
		From East: Use I-50 West, take Exit 9, Howe Ave, and turn right. Take the exit toward American River Access and continue straight to boat ramp.	
Latitude/Longitude: 38.56003, -121.40533	Highway Postmile: SAC R4.003	Railroad Milepost: N/A	Cell Service: Yes – Verizon Tested
Nearest Address: 7937 La Riviera Dr, Sacramento, CA 95826			

Overview Street Map



Hazards, Restrictions and Advice for Responders

- Trip and fall hazards, slippery when icy or wet
- Fast moving water at times of high flow
- Downed trees near shore
- Submerged objects
- Highly trafficked recreation area
- Bike trail
- County Park locked gate after hours

Resources-At-Risk

Ecological: Bald Eagle, Bank Swallow, Burrowing Owl, Purple Martin, Song Sparrow-Modesto population, Swainson’s Hawk, Tricolored Blackbird, Western Yellow-billed Cuckoo, White-tailed Kite, Delta Smelt, Sacramento Splittail, Steelhead-Central Valley DPS, Western Pond Turtle, Valley Elderberry Longhorn Beetle, Vernal Pool Fairy Shrimp, Vernal Pool Tadpole Shrimp, Sanford’s Arrowhead

Economic: Water treatment plant downstream.

Tribal: Contact the Native American Heritage Commission at (916) 373-3710.

Cultural and Historic: Contact the North Central Information Center at (916) 278-6217.

Site Description and Field Notes

<p>Site Location/Segment: AME-SA-H-005</p>	<p>Site Description and Field Notes: Property managed by Sacramento County Regional Parks and open sunrise to sunset. High recreational use area with trails. Gate is locked when closed and park staff can respond to open gate. Gravel bar NW bank and island upstream.</p>			
<p>Gradient: Medium</p>	<p>River Width: 125 m (410 ft)</p>	<p>Vehicular Access: All vehicle types can access this location.</p>	<p>Recreational Use: Rafting, kayaking, fishing, boating, water contact, biking and hiking trails.</p>	<p>Boat Launches: One lane boat ramp onsite.</p>
<p>Site Contact/s:</p>	<p>Sacramento County Regional Parks (916) 874-5111</p>			
<p>ESI Shoreline Type:</p>	<p>6B – Riprap, 9B – Vegetated low banks</p>			

Site Images

Upstream



Downstream



Straight Across



Boat Ramp



RR = River Right RL = River Left

Photo Date: 03/02/2022

Site Objectives: Deflection and collection. Limit shoreline impacts.

Implementation: Deploy swiftwater boom with boats, river right upstream shoreline at 22-degree angle or less, to river left shoreline near boat ramp and protect shoreline with additional boom. May need to implement cascade deflection depending on flow and angle. Additional ropes and anchors recommended for this response strategy. Collect product using skimmer/pump to vacuum truck. The staging area can house bins for soft sorbents which should be used in conjunction with hard boom. Additional deflection boom to be used to protect sensitive resources.

Staging Area Location and Capabilities/Amenities/Waste Management: Stage equipment and manage waste in parking lot. Room for 70 bbl vacuum truck and skimmer. Portable restrooms on site.

Response Strategy Map (overview)

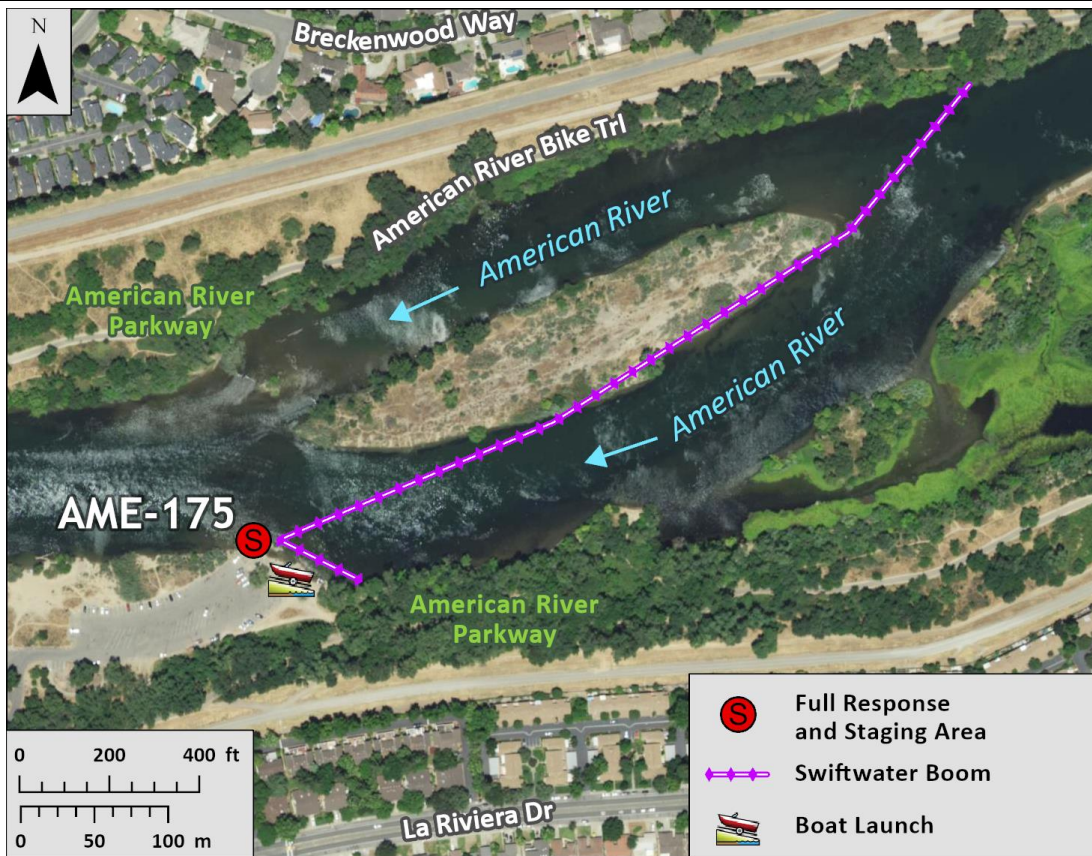


Table of Response Resources

Type	Sub-Type	Size	Unit	Quantity	Special Equipment or Comments
Boom	Swiftwater	12-14 in. skirt	Feet	2000	1000 ft rope needed
Anchors	Danforth	25	Pound	3	
Stakes				6	Use to secure boom to shore
Boat		25	Feet	1	Response vessel
Personnel			Crew	6-10	Support for boat and shoreline operations