

**Driving Directions:**

From West: Use I-50 East, take Exit 13, Bradshaw Rd, and turn left. Turn right onto Folsom Blvd, turn left onto Rod Beaudry Dr and continue to park gate.

From East: Use I-50 West, take Exit 15, Mather Field Rd, and turn right. Turn left onto Folsom Blvd, turn right onto Rod Beaudry Dr and continue to park gate.

**Latitude/Longitude:** 38.59667, -121.3310

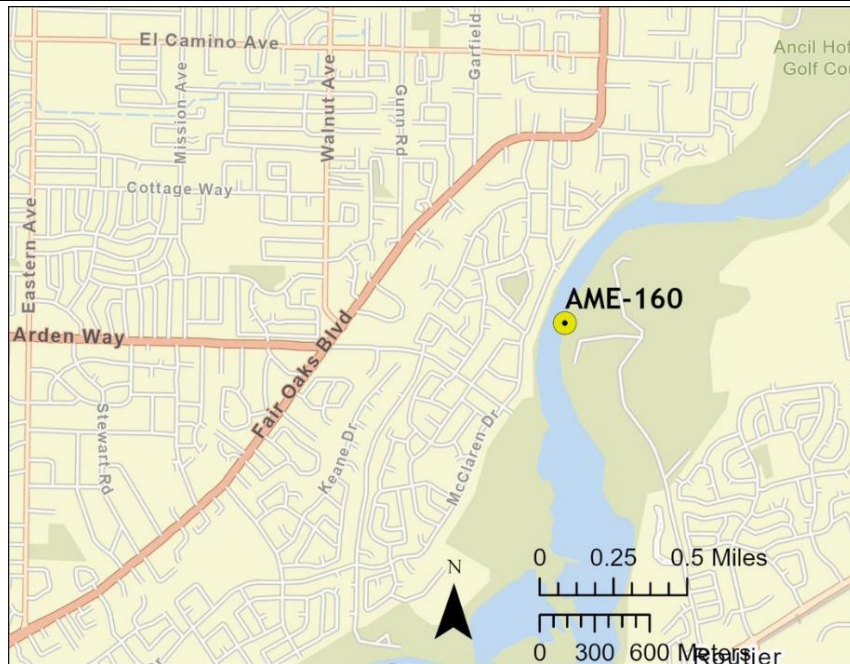
**Highway Postmile:** SAC R8.944

**Railroad Milepost:** N/A

**Cell Service:** Yes - Verizon Tested

**Nearest Address:** 2288 El Cejo Cir, Rancho Cordova, CA 95670

**Overview Street Map**



**Hazards, Restrictions and Advice for Responders**

- Trip and fall hazards, slippery when icy or wet
- Fast moving water at times of high flow
- Downed trees near shore
- Submerged objects
- Highly trafficked recreation area
- County Park locked gate after hours
- Additional locked gate to access river

**Resources-At-Risk**

**Ecological:** Bald Eagle, Bank Swallow, Burrowing Owl, Golden Eagle, Swainson’s Hawk, Tricolored Blackbird, White-tailed Kite, Steelhead-Central Valley DPS, Western Spadefoot, Western Pond Turtle, Valley Elderberry Longhorn Beetle, Vernal Pool Fairy Shrimp, Vernal Pool Tadpole Shrimp, Sacramento Orcutt Grass, Sanford’s Arrowhead

**Economic:** American River Raft Rentals

**Tribal:** Contact the Native American Heritage Commission at (916) 373-3710.

**Cultural and Historic:** Contact the North Central Information Center at (916) 278-6217.

**Site Description and Field Notes**

<p><b>Site Location/Segment:</b> AME-SA-F-010</p>	<p><b>Site Description and Field Notes:</b> Property managed by Sacramento County Regional Parks and open sunrise to sunset. High recreational use area with trails. Gate is locked when closed and park staff can respond to open gate. Common take out spot for commercial rafting companies and recreational rafters.</p>			
<p><b>Gradient:</b> Medium</p>	<p><b>River Width:</b> 110 m (361 ft)</p>	<p><b>Vehicular Access:</b> All vehicle types can access this location.</p>	<p><b>Recreational Use:</b> Rafting, kayaking, fishing, boating, water contact, biking and hiking trails.</p>	<p><b>Boat Launches:</b> Rough sand/gravel terrain for launch.</p>
<p><b>Site Contact/s:</b></p>	<p>Sacramento County Regional Parks (916) 874-5111</p>			
<p><b>ESI Shoreline Type:</b></p>	<p>9B – Vegetated low banks</p>			

**Site Images**

Upstream



Downstream



Straight Across



Access Trail



RR = River Right RL = River Left

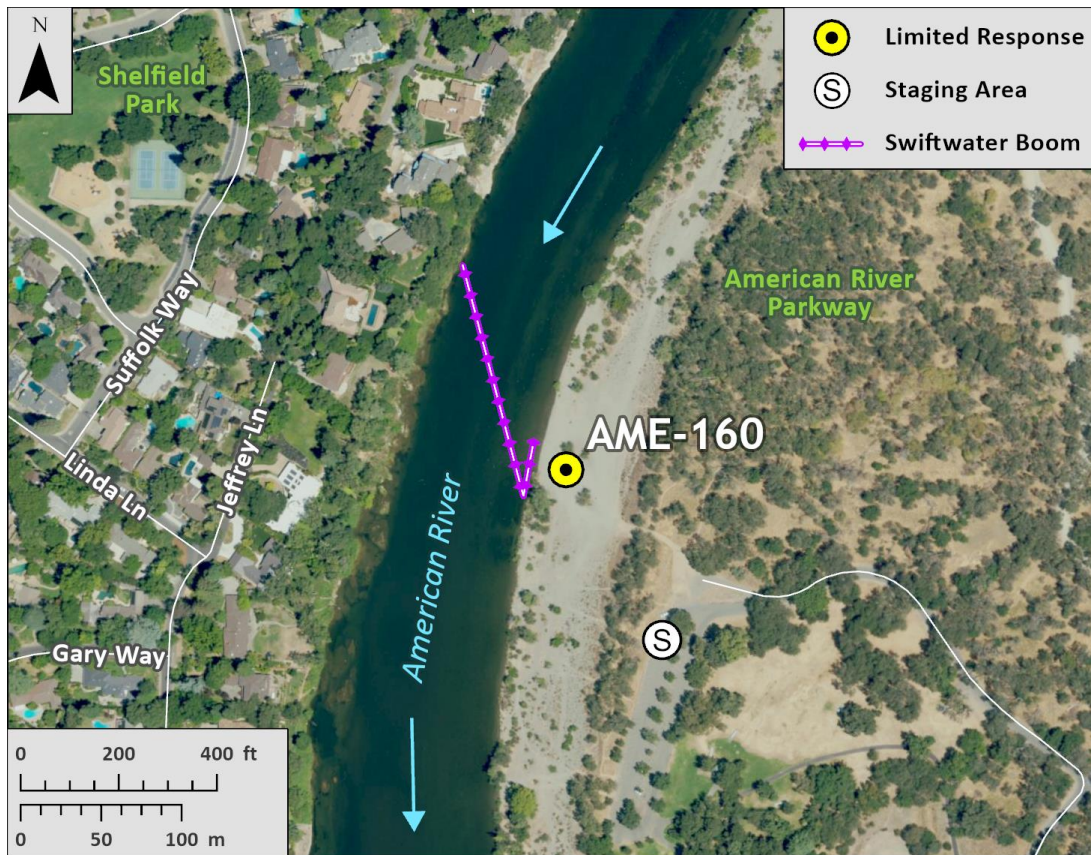
Photo Date: 03/08/2022

**Site Objectives:** Deflection and collection. Limit shoreline impacts.

**Implementation:** Deploy swiftwater boom with boats, river right upstream shoreline at 22-degree angle or less, to river left shoreline and protect shoreline with additional boom. May need to implement cascade deflection depending on flow and angle. Additional ropes and anchors recommended for this response strategy. Collect product using skimmer/pump to vacuum truck. The staging area can house bins for soft sorbents which should be used in conjunction with hard boom. Additional deflection boom to be used to protect sensitive resources. Upstream safety to protect recreational users from work zones.

**Staging Area Location and Capabilities/Amenities/Waste Management:** Stage equipment and manage waste in parking lot. High center hazard when pulling over access road, avoid tractor trailer, long or low vehicles. Room for 70 bbl vacuum truck and skimmer. Restrooms on site.

**Response Strategy Map (overview)**



**Table of Response Resources**

Type	Sub-Type	Size	Unit	Quantity	Special Equipment or Comments
Boom	Swiftwater	12-14 in. skirt	Feet	600	1000 ft rope needed
Anchors	Danforth	25	Pound	3	
Stakes				6	Use to secure boom to shore
Boat		25	Feet	1	Response vessel
Personnel			Crew	6-10	Support for boat and shoreline operations