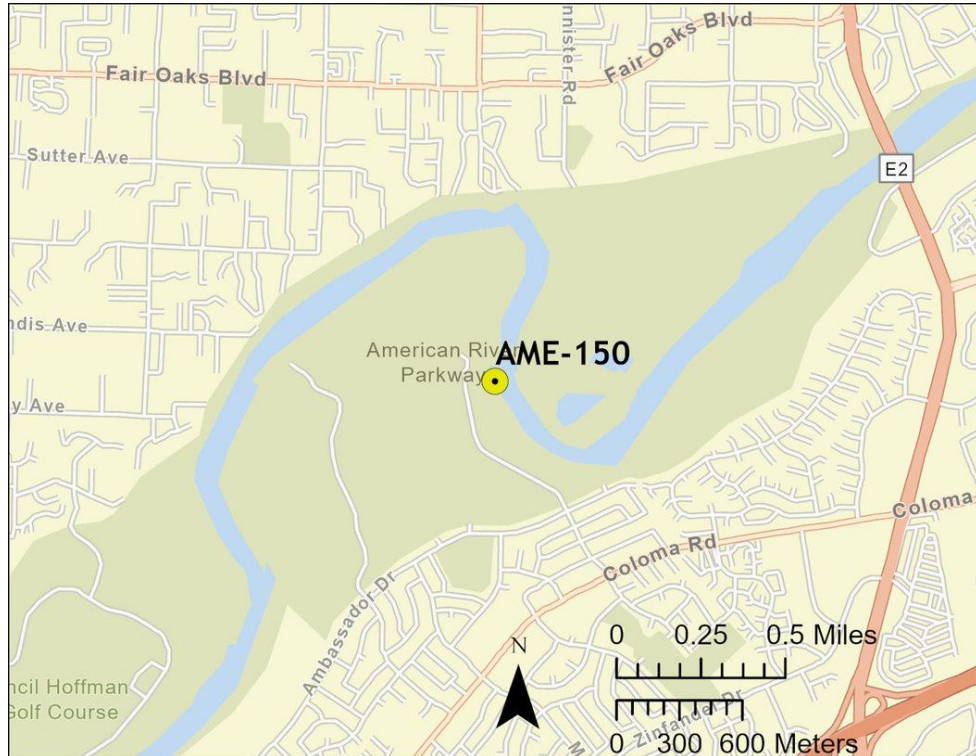


Driving Directions:	From West: Use I-50 East, take Exit 18, Sunrise Blvd, and turn left. Continue on Sunrise Blvd and turn left on Coloma Rd. Turn right onto El Manto Dr.		
	From East: Use I-50 West, take Exit 18, Sunrise Blvd, and turn right. Continue on Sunrise Blvd and turn left on Coloma Rd. Turn right onto El Manto Dr.		
Latitude/Longitude: 38.62375, -121.2907	Highway Postmile: SAC R12.267	Railroad Milepost: N/A	Cell Service: Yes – Verizon Tested

Nearest Address: 10801 Ambassador Dr, Rancho Cordova, CA 95670

Overview Street Map



Hazards, Restrictions and Advice for Responders

- Trip and fall hazards, slippery when icy or wet
- Fast moving water at times of high flow
- Downed trees near shore
- Submerged objects
- Highly trafficked recreation area
- Bike path
- County Park locked gate after hours

Resources-At-Risk

Ecological: Bald Eagle, Bank Swallow, Burrowing Owl, Golden Eagle, Swainson's Hawk, Tricolored Blackbird, White-tailed Kite, Steelhead-Central Valley DPS, Western Spadefoot, Western Pond Turtle, Valley Elderberry Longhorn Beetle, Vernal Pool Fairy Shrimp, Vernal Pool Tadpole Shrimp, Sacramento Orcutt Grass, Sanford's Arrowhead

Economic: N/A

Tribal: Contact the Native American Heritage Commission at (916) 373-3710.

Cultural and Historic: Contact the North Central Information Center at (916) 278-6217.

Site Description and Field Notes

<p>Site Location/Segment: AME-SA-E-015</p>	<p>Site Description and Field Notes: Property managed by Sacramento County Regional Parks and open sunrise to sunset. High recreational use area with trails. Gate is locked when closed and park staff can respond to open gate. Rapids upstream. Manual labor operation hauling out boom, pads, and kayaks/small boat.</p>			
<p>Gradient: Medium</p>	<p>River Width: 100 m (328 ft)</p>	<p>Vehicular Access: All vehicle types can access this location.</p>	<p>Recreational Use: Rafting, kayaking, fishing, boating, water contact, biking and hiking trails.</p>	<p>Boat Launches: Hand launch only.</p>
<p>Site Contact/s:</p>	<p>Sacramento County Regional Parks (916) 874-5111</p>			
<p>ESI Shoreline Type:</p>	<p>9B – Vegetated low banks</p>			

Site Images

<p>Upstream</p> 	<p>Downstream</p> 
<p>Straight Across</p> 	
<p>RR = River Right RL = River Left</p>	<p>Photo Date: 03/11/2022 and 03/14/2022</p>

Site Objectives: Deflection and collection. Limit shoreline impacts.

Implementation: Deploy swiftwater boom with small boat/kayaks, river right upstream shoreline at 22-degree angle or less, to river left shoreline and protect shoreline with additional boom. May need to implement cascade deflection depending on flow and angle. Additional ropes and anchors recommended for this response strategy. Collect product using skimmer/pump to vacuum truck. The staging area can house bins for soft sorbents which should be used in conjunction with hard boom. Additional deflection boom to be used to protect sensitive resources.

Staging Area Location and Capabilities/Amenities/Waste Management: Stage equipment and manage waste in parking lot. Manual labor operation hauling out boom, pads, and kayaks/small boat. Restrooms on site.

Response Strategy Map (overview)

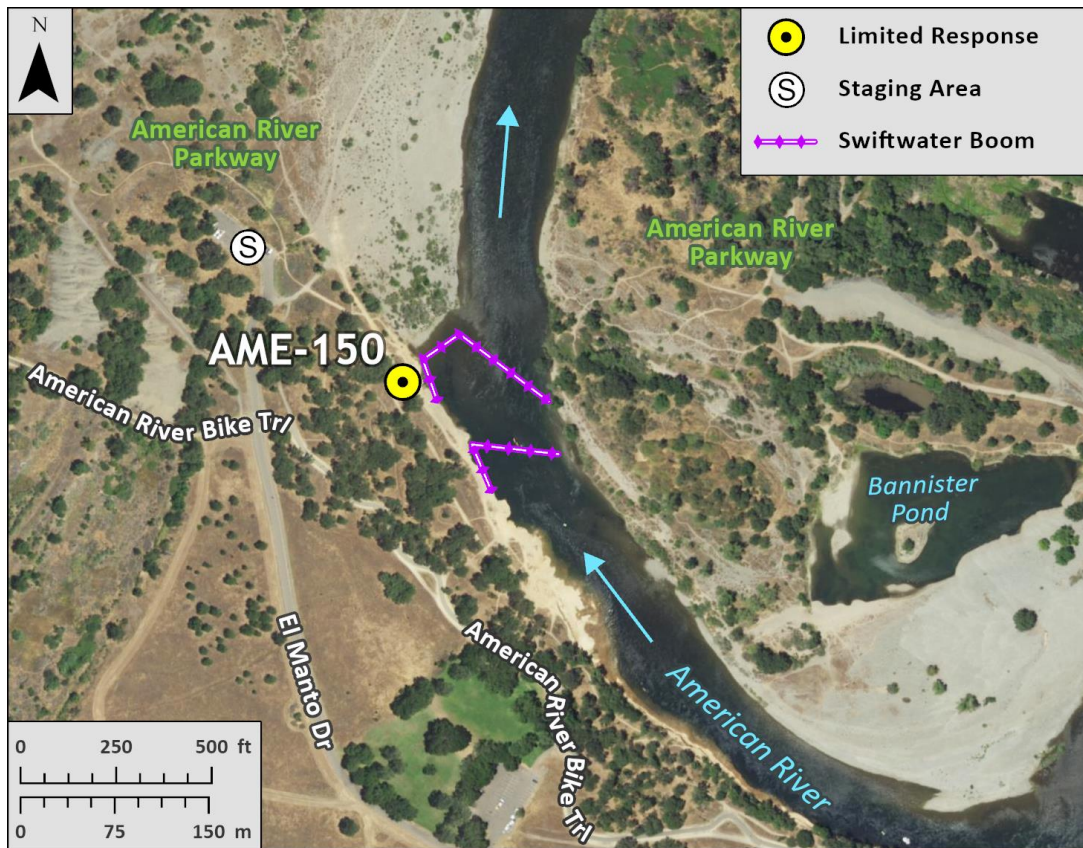


Table of Response Resources

Type	Sub-Type	Size	Unit	Quantity	Special Equipment or Comments
Boom	Swiftwater	12-14 in. skirt	Feet	400	1000 ft rope needed
Anchors	Danforth	25	Pound	3	
Stakes				6	Use to secure boom to shore
Boat	Kayak/small boat			2-3	Response vessel
Personnel			Crew	6-10	Support for boat and shoreline operations