

<b>Driving Directions:</b>		From West: Use I-50 East, take Exit 18, Sunrise Blvd, and turn left. Continue on Sunrise Blvd and turn right onto S Bridge St. Turn left towards the boat ramp entrance.	
		From East: Use I-50 West, take Exit 18, Sunrise Blvd, and turn right. Continue on Sunrise Blvd and turn right onto S Bridge St. Turn left towards the boat ramp entrance.	
<b>Latitude/Longitude:</b> 38.63638, -121.2639	<b>Highway Postmile:</b> SAC 13.638	<b>Railroad Milepost:</b> N/A	<b>Cell Service:</b> Yes – Verizon Tested
<b>Nearest Address:</b> 113450 S Bridge St, Gold River, CA 95670			

**Overview Street Map**



**Hazards, Restrictions and Advice for Responders**

- Trip and fall hazards, slippery when icy or wet
- Fast moving water at times of high flow
- Downed trees near shore
- Submerged objects
- Highly trafficked recreation area
- Bike trail
- County Park locked gate after hours

**Resources-At-Risk**

**Ecological:** Bald Eagle, Bank Swallow, Swainson’s Hawk, Tricolored Blackbird, White-tailed Kite, Steelhead-Central Valley DPS, Western Spadefoot, Western Pond Turtle, Valley Elderberry Longhorn Beetle, Vernal Pool Fairy Shrimp, Vernal Pool Tadpole Shrimp, Sacramento Orcutt Grass, Sanford’s Arrowhead

**Economic:** Water intakes, fish hatcheries upstream, American River Raft Rentals downstream.

**Tribal:** Contact the Native American Heritage Commission at (916) 373-3710.

**Cultural and Historic:** Contact the North Central Information Center at (916) 278-6217.

**Site Description and Field Notes**

<p><b>Site Location/Segment:</b> AME-SA-E-005</p>	<p><b>Site Description and Field Notes:</b> Property managed by Sacramento County Regional Parks and open sunrise to sunset. High recreational use area with trails. Gate is locked when closed and park staff can respond to open gate. Multiple large parking lots for staging and waste management. American River Raft Rentals downstream and popular raft launch area.</p>			
<p><b>Gradient:</b> Medium</p>	<p><b>River Width:</b> 95 m (321 ft)</p>	<p><b>Vehicular Access:</b> All vehicle types can access this location.</p>	<p><b>Recreational Use:</b> Rafting, kayaking, fishing, boating, water contact, biking and hiking trails.</p>	<p><b>Boat Launches:</b> One lane boat ramp on site.</p>
<p><b>Site Contact/s:</b></p>	<p>Sacramento County Regional Parks (916) 874-5111</p>			
<p><b>ESI Shoreline Type:</b> 8F – Vegetated steeply-sloping bluffs</p>				

**Site Images**

Upstream



Downstream



Straight Across



Boat Ramp



**RR = River Right RL = River Left**

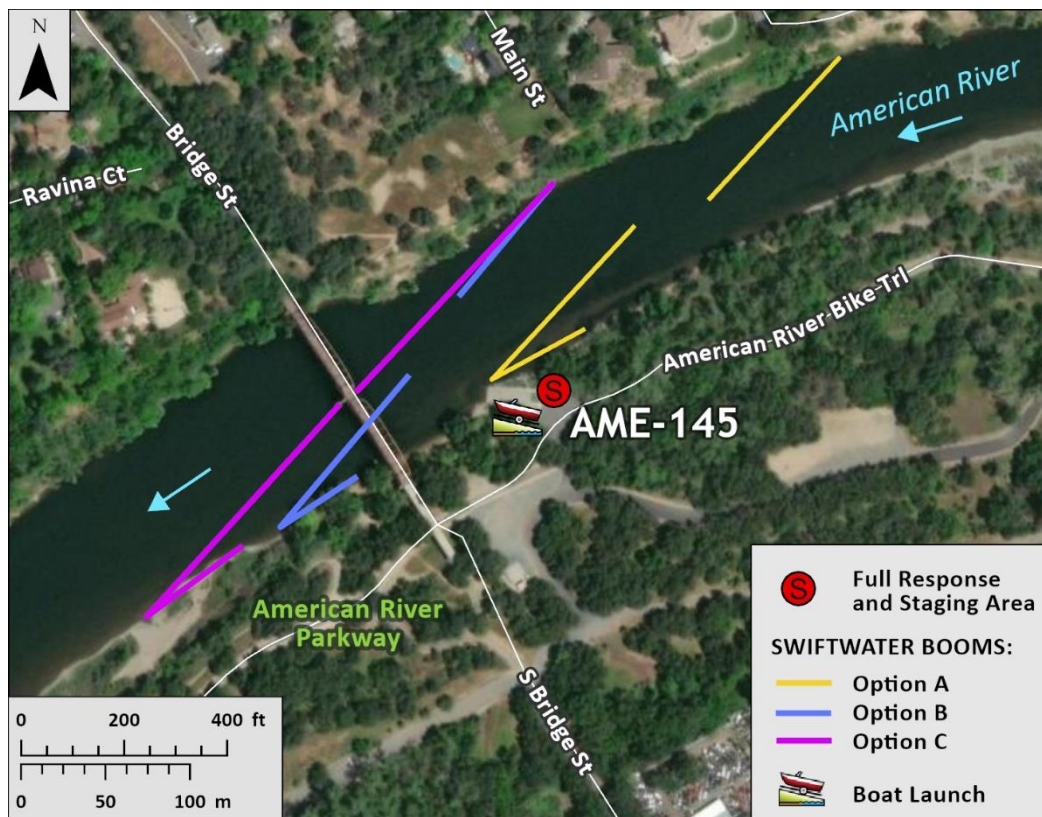
**Photo Date:** 03/08/2022 and 03/10/2022

**Site Objectives:** Deflection and collection. Limit shoreline impacts.

**Implementation:** Deploy swiftwater boom with boats, river right upstream shoreline at 22-degree angle or less, to river left shoreline near boat ramp and protect shoreline with additional boom. Use single boom strand in low flow conditions and two strand deflection/collection technique in high flow conditions. Option C uses two strands anchored at bridge pier. Collect product using skimmer/pump to vacuum truck. The staging area can house bins for soft sorbents which should be used in conjunction with hard boom. Additional deflection boom to be used to protect sensitive resources.

**Staging Area Location and Capabilities/Amenities/Waste Management:** Stage equipment and manage waste in parking lot. Room for 70 bbl vacuum truck and skimmer. **Caution:** low hanging trees may prevent larger vehicles from access at shore, transfer pump and totes may be needed to collect and transfer outside shoreline areas. Restrooms on site.

**Response Strategy Map (overview)**



**Table of Response Resources**

Type	Sub-Type	Size	Unit	Quantity	Special Equipment or Comments
Boom	Swiftwater	12-14 in. skirt	Feet	1500	1500 ft rope needed
Anchors	Danforth	25	Pound	3	
Stakes or T-Posts				6-9	Use to secure boom to shore
Boat		25	Feet	2	Response vessel
Personnel			Crew	6-10	Support for boat and shoreline operations