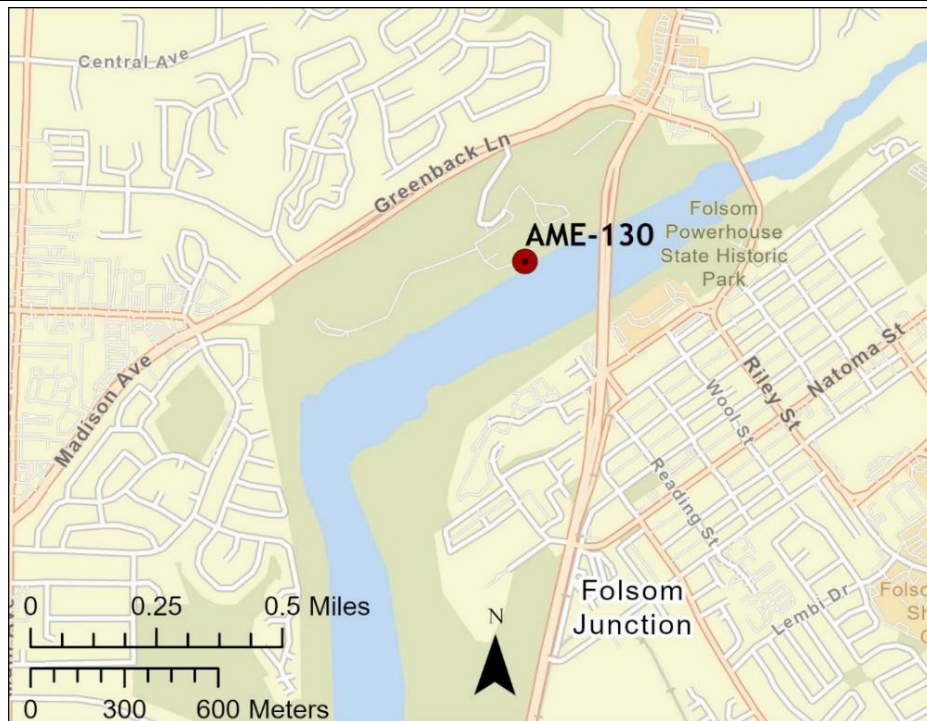


Driving Directions:	From West: Use I-50 East, take Exit 23, Folsom Blvd, and turn left. Continue on Folsom Blvd and turn Left on Greenback Lane. Turn left on Park/Black Miners Bar Entrance and continue to the boat ramp.		
	From East: Use I-50 West, take Exit 23, Folsom Blvd, and turn left. Continue on Folsom Blvd and turn Left on Greenback Lane. Turn left on Park/Black Miners Bar Entrance and continue to the boat ramp.		
Latitude/Longitude: 38.67973, -121.18370	Highway Postmile: SAC 18.165	Railroad Milepost: N/A	Cell Service: Yes- Verizon tested
Nearest Address: 9871 Greenback Lane, Folsom, CA 95630			

Overview Street Map



Hazards, Restrictions and Advice for Responders

- Trip and fall hazards, slippery when icy or wet
- Fast moving water at times of high flow
- Downed trees near shore
- Submerged objects
- Highly trafficked recreation area
- State Park locked gate after hours

Resources-At-Risk

Ecological: Bald Eagle (known nesting site in area), Swainson's Hawk, Tricolored Blackbird, White-tailed Kite, Steelhead-Central Valley DPS, Western Spadefoot, Western Pond Turtle, Valley Elderberry Longhorn Beetle, Vernal Pool Fairy Shrimp, Vernal Pool Tadpole Shrimp, Sacramento Orcutt Grass, Sanford's Arrowhead

Economic: Drinking water, power plants, and water treatment facility intakes upstream.

Tribal: Contact the Native American Heritage Commission at (916) 373-3710.

Cultural and Historic: Contact the North Central Information Center at (916) 278-6217.

Site Description and Field Notes

<p>Site Location/Segment: AME-SA-B-010</p>	<p>Site Description and Field Notes: Property managed by California State Parks and open sunrise to sunset. High recreational use area with trails and campground. Gate is locked when closed and park staff can respond to open gate. Rainbow Bridge and Folsom Bridge east of boat ramp. Large parking and staging area.</p>			
<p>Gradient: Medium</p>	<p>River Width: 237 m (778 ft)</p>	<p>Vehicular Access: All vehicle types can access this location.</p>	<p>Recreational Use: Rafting, kayaking, fishing, boating, water contact, camping, biking and hiking trails.</p>	<p>Boat Launches: Boat launch on site.</p>
<p>Site Contact/s:</p>	<p>Folsom Lake SRA (916) 358-1300</p>			
<p>ESI Shoreline Type:</p>	<p>9B- Vegetated low banks</p>			

Site Images

Upstream



Downstream



Straight Across



Staging Area



RR = River Right RL = River Left

Photo Date: 03/08/2022

Site Objectives: Deflection and collection. Limit shoreline impacts.

Implementation: Deploy swiftwater boom with boats, river left upstream shoreline at 22-degree angle or less, to river right shoreline near boat ramp and protect shoreline with additional boom. Collect product using skimmer/pump to vacuum truck. The staging area can house bins for soft sorbents which should be used in conjunction with hard boom. Additional deflection boom to be used to protect sensitive resources.

Staging Area Location and Capabilities/Amenities/Waste Management: Stage equipment and manage waste in parking lot. Room for 70 bbl vacuum truck and skimmer. Restrooms on site.

Response Strategy Map (overview)

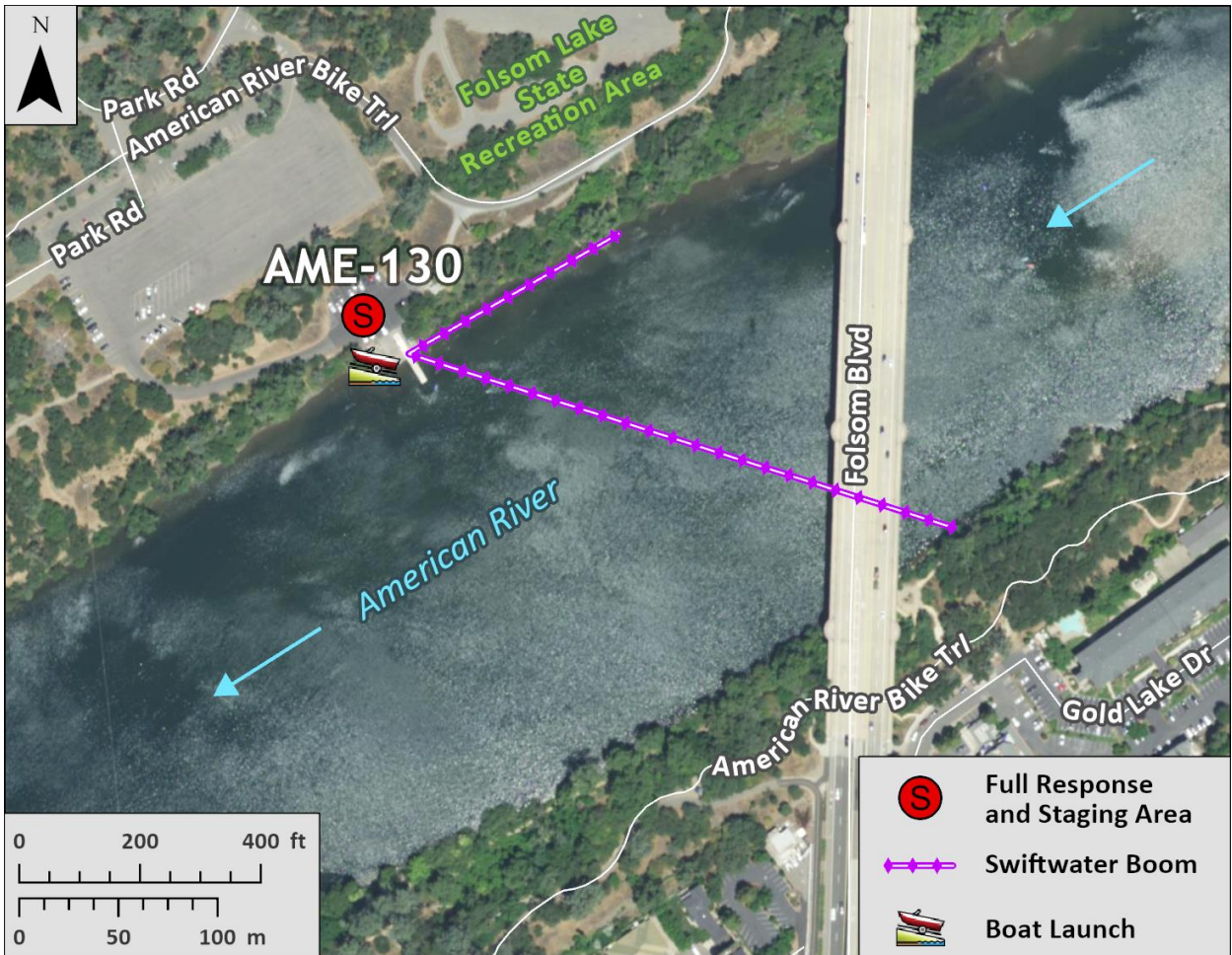


Table of Response Resources

Type	Sub-Type	Size	Unit	Quantity	Special Equipment or Comments
Boom	Swiftwater	12-14 in. skirt	Feet	1000	1000 ft rope needed
Anchors	Danforth	25	Pound	3	
Stakes				6	Use to secure boom to shore
Boat		25	Feet	1	Response vessel
Personnel			Crew	6-10	Support for boat and shoreline operations