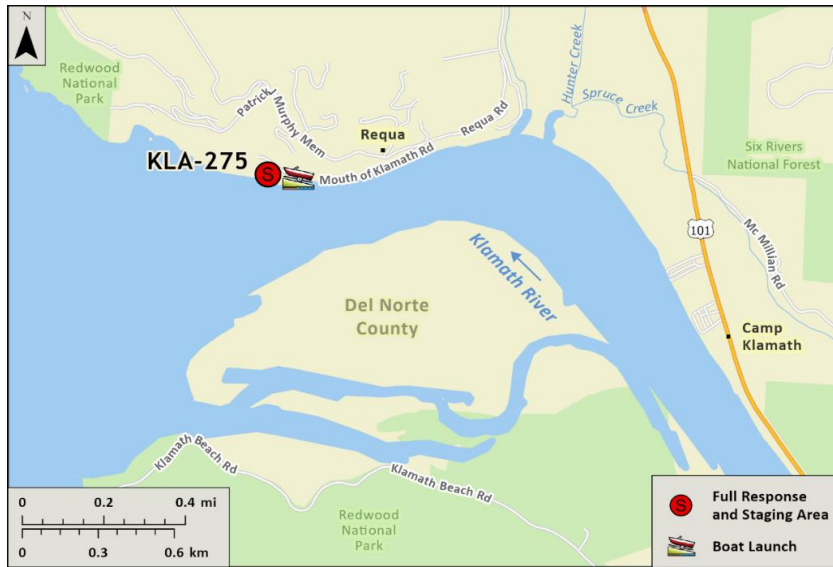


<b>Driving Directions:</b>	From North: Take Hwy 101 south toward Klamath. Turn right on Requa Rd and follow for 0.9 miles, turn left on Mouth of Klamath Rd (at Requa Inn) and follow 0.4 miles to end.		
	From South: Take Hwy 101 north to Klamath. Turn left on Requa Rd and follow for 0.9 miles, turn left on Mouth of Klamath Rd (at Requa Inn) and follow 0.4 miles to end.		
<b>Latitude/Longitude:</b> 41.54539, -124.07095	<b>Highway Postmile:</b> N/A	<b>Railroad Milepost:</b> N/A	<b>Cell Service:</b> Yes - Verizon Tested

**Nearest Address:** End of Mouth of Klamath Rd, Klamath, CA

**Overview Street Map**



**Hazards, Restrictions and Advice for Responders**

- Responders should be aware of seasonal swift water concerns. Uneven banks. See nearest gauge for flow information at: [CNRFC - Hydrology - River Guidance - Graphical RVF - KLMC1 \(noaa.gov\)](https://www.cnrfc.com/hydrology/river-guidance/graphical-rvf-klmc1)
- This site is dynamic with the river outlet shifting in location and width periodically following high flows and can pose a hazard to boaters.
- Boat launches may become impacted/unusable during years with excess sediment load being transported downstream.
- Toxic algal blooms have been known to occur during periods of warm weather and low river flow. Avoid water contact during these conditions. The following web site tracks voluntary reporting of locations where toxic algal blooms have been reported: [https://mywaterquality.ca.gov/habs/where/freshwater\\_events.html](https://mywaterquality.ca.gov/habs/where/freshwater_events.html)

**Resources-At-Risk**

**Ecological:** Bald Eagle, California Condor, Marbled Murrelet, Northern Spotted Owl, Osprey, Common Loon, California Sea Lion, Harbor Seal, River Otter, Chinook Salmon, Coho Salmon, Coast Cutthroat Trout, Eulachon, Green Sturgeon, Longfin Smelt, Pacific Lamprey, Steelhead, Northern Red-legged Frog, Western Bumble Bee, Coastal Triquetrella, Pink Sand Verbena

**Economic:** Fishing guide services, tribal, recreational, and commercial fishing, camping, local tourism

**Tribal:** Contact the Native American Heritage Commission at (916) 373-3710.

**Cultural and Historic:** Contact the Northwest Information Center at (707) 588-8455.

**Site Description and Field Notes**

<p><b>Site Location/Segment:</b> KLA-DN-A-015</p>	<p><b>Site Description and Field Notes:</b> This site is at the mouth of the Klamath River and is co-located with ACP1 site 1-180. The estuary is tidal and dynamic with the river mouth shifting locations year to year based on flow. The site is within the Yurok Reservation. Elevation is at sea level.</p>			
<p><b>Gradient:</b> low (summer)</p>	<p><b>River Width:</b> 366 m (1200 ft)</p>	<p><b>Vehicular Access:</b> All vehicle types can access this site.</p>	<p><b>Recreational Use:</b> Recreational and commercial fishing, local tourism.</p>	<p><b>Boat Launches:</b> This site features an improved boat launch and seasonal dock.</p>
<p><b>Site Contact/s:</b> Yurok Tribe Spill Hotline (707) 954-0462 Klamath Office (707) 482-1350</p>	<p>Yurok Tribe Office of Emergency Services Duty Officer (707) 951-6844</p>	<p>Pulika Tribe of Yurok People (707) 482-2431</p>	<p>Del Norte County Parks &amp; Recreation Department (707) 464-7237</p>	
<p><b>ESI Shoreline Type:</b></p>	<p>Sandy bars and gently sloping banks (4), Riprap (6B), Vegetated low banks (9B)</p>			

**Site Images**

Upstream



Downstream



Straight Across



**RR = River Right RL = River Left**

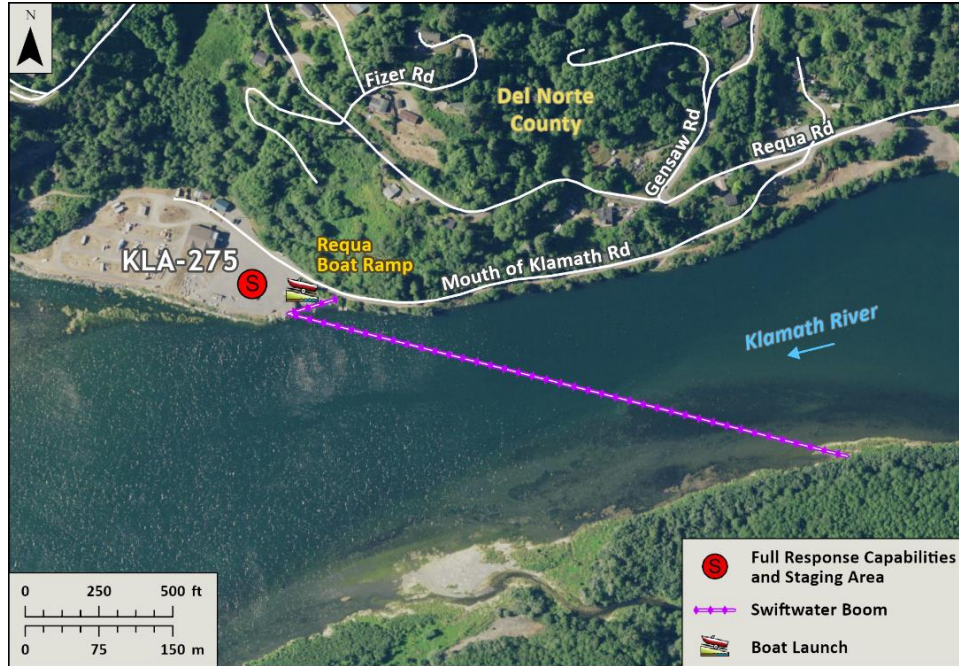
**Photo Date:** 5/28/2019

**Site Objectives:** Strand floating oil near the boat launch for collection and disposal.

**Implementation:** Deploy up to 3600 feet of swift water boom from RL toward RR and collect product at or near the boat launch. Deploy additional 200 feet of boom for shoreline protection in collection area. Deploy cascading sections of boom if needed (400-600 feet). Recover oil with skimmer and sorbents. On water skimming may be possible. Tidal area, recovery may be most effective on ebb.

**Staging Area Location and Capabilities/Amenities/Waste Management:** Parking area at boat launch is large enough to serve as staging and waste management areas. Seasonal dock, campground, and rest rooms on site. Coordinate response here with Yurok Tribe.

**Response Strategy Map (overview)**



**Table of Response Resources**

Type	Sub-Type	Size	Unit	Quantity	Special Equipment or Comments
Boom	Swift Water Boom	8 to 12 in. skirt	Feet	3800	Need ancillary equipment including anchors and stakes
Boom	Sorbent Boom	5 to 8 in. dia.	Feet	7600	
Pads and Sweep	Sorbent		Bale	40	
Skimmer	Disc or Drum			1	If needed
Response Vessel	Response and Boom Vessel			2	1 each, minimum, shallow draft vessel necessary on RL
Personnel			Crew	6 to 10	2 vessel operators and 2 deckhands, minimum
Vacuum Truck		120	BBL	1	If needed
Storage Tank		20,000	Gallon	5	If needed