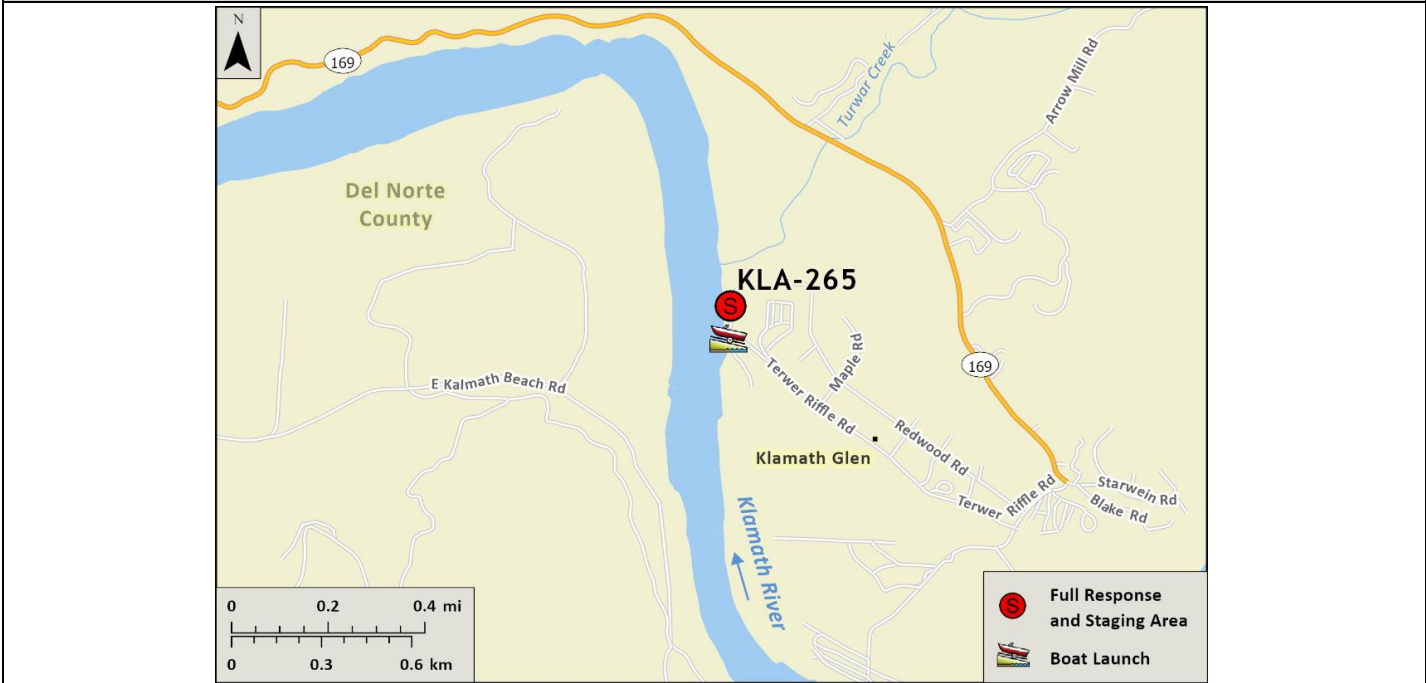


<b>Driving Directions:</b>	From North or South on Highway 101 near Klamath: Take Hwy 169 east towards Klamath Glen/Terwer Valley, follow 3.2 miles into Klamath Glen, turn right onto Terwer Riffle Road and follow for 0.2 miles, stay right on Terwer Riffle Road, and follow another 0.8 miles up and over levee into launch facility.		
<b>Latitude/Longitude:</b> 41.51590, -124.00050	<b>Highway Postmile:</b> N/A	<b>Railroad Milepost:</b> N/A	<b>Cell Service:</b> Yes - Verizon Tested

**Nearest Address and Thomas Guide #:** End Terwer Riffle Rd, Klamath Glen, CA

**Overview Street Map**



**Hazards, Restrictions and Advice for Responders**

- Responders should be aware of seasonal swift water concerns. Uneven banks. This response strategy will only be safe and feasible in lower flows between late spring and fall due to swift currents. See nearest gauge for flow information at: [CNRFC - Hydrology - River Guidance - Graphical RVF - KLMC1 \(noaa.gov\)](https://www.cnrfc.com/hydrology/river-guidance-graphical-rvf-klmcl1)
- Boat launches may become impacted/unusable during years with excess sediment load being transported downstream.
- Toxic algal blooms have been known to occur during periods of warm weather and low river flow. Avoid water contact during these conditions. The following web site tracks voluntary reporting of locations where toxic algal blooms have been reported: [https://mywaterquality.ca.gov/habs/where/freshwater\\_events.html](https://mywaterquality.ca.gov/habs/where/freshwater_events.html)

**Resources-At-Risk**

**Ecological:** Bald Eagle, California Condor, Great Blue Heron, Marbled Murrelet, Northern Spotted Owl, Osprey, River Otter, Chinook Salmon, Coho Salmon, Coast Cutthroat Trout, Eulachon, Green Sturgeon, Longfin Smelt, Lower Klamath Marbled Sculpin, Pacific Lamprey, Steelhead, Northern Red-legged Frog, Wolf's Evening Primrose

**Economic:** Fishing guide services, tribal, recreational, and commercial fishing, camping, local tourism


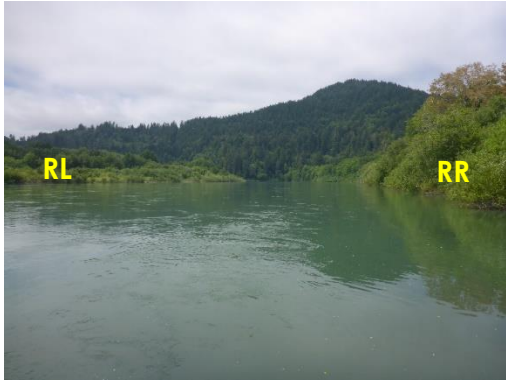

**Tribal:** Contact the Native American Heritage Commission at (916) 373-3710.

**Cultural and Historic:** Contact the Northwest Information Center at (707) 588-8455.

**Site Description and Field Notes**

<p><b>Site Location/Segment:</b> KLA-DN-A-010</p>	<p><b>Site Description and Field Notes:</b> This response site is at the town of Klamath Glen at an improved boat launch facility. There is ample parking for staging and waste management at the site but there are no amenities. The site is within the Yurok Reservation. The site may be considered for limited or manual response or observation only in higher flows. Elevation is ~15 feet.</p>			
<p><b>Gradient:</b> med (summer)</p>	<p><b>River Width:</b> 151 m (495 ft)</p>	<p><b>Vehicular Access:</b> All vehicle types can access this location.</p>	<p><b>Recreational Use:</b> Recreational and commercial fishing, local tourism.</p>	<p><b>Boat Launches:</b> This site features an improved boat launch and seasonal dock managed by Del Norte County.</p>
<p><b>Site Contact/s:</b> Yurok Tribe Spill Hotline (707) 954-0462 Klamath Office (707) 482-1350</p>	<p>Yurok Tribe Office of Emergency Services Duty Officer (707) 951-6844</p>	<p>Pulika Tribe of Yurok People (707) 482-2431</p>	<p>Del Norte County Parks &amp; Recreation Department (707) 464-7237</p>	
<p><b>ESI Shoreline Type:</b></p>	<p>Mixed sand and gravel bars and gently sloping banks (5), Vegetated low banks (9B)</p>			

**Site Images**

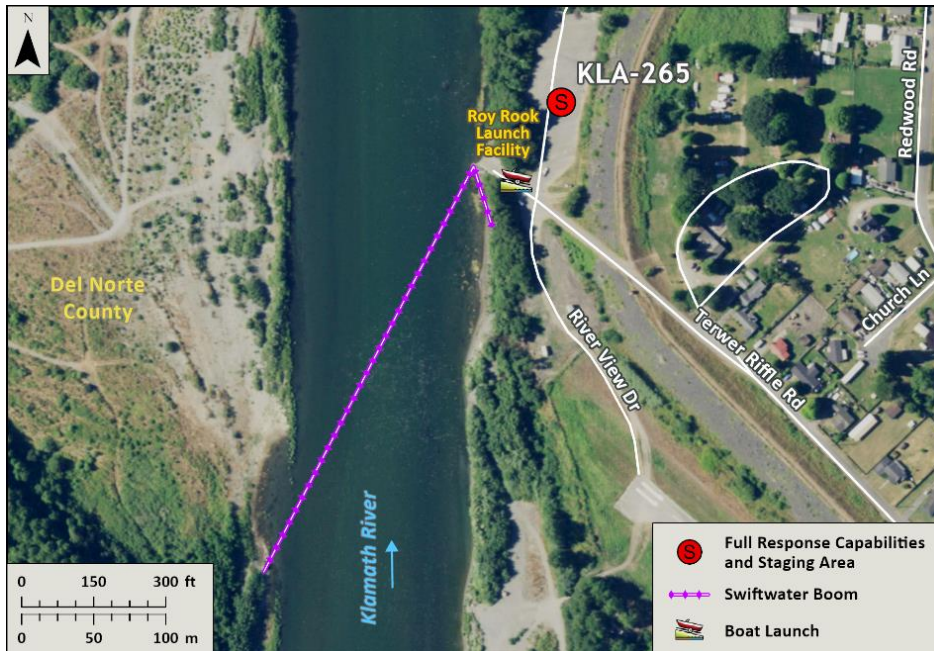
<p>Upstream</p> 	<p>Downstream</p> 
<p>Straight Across</p> 	
<p><b>RR = River Right RL = River Left</b></p>	<p><b>Photo Date:</b> 5/28/2019</p>

**Site Objectives:** Strand floating oil near the boat launch for collection and disposal.

**Implementation:** Deploy up to 1500 feet of swift water boom from RL toward RR and collect product at or near the boat launch. Deploy additional 200 feet of boom for shoreline protection in collection area. Deploy cascading sections of boom if needed (400-600 feet). Recover oil with skimmer and sorbents. On water skimming may be possible.

**Staging Area Location and Capabilities/Amenities/Waste Management:** Parking area at boat launch is large enough to serve as staging and waste management areas but there are no amenities. Coordinate response here with Yurok Tribe and Del Norte County Parks & Recreation.

**Response Strategy Map (overview)**



**Table of Response Resources**

Type	Sub-Type	Size	Unit	Quantity	Special Equipment or Comments
Boom	Swift Water Boom	8 to 12 in. skirt	Feet	1700	Need ancillary equipment including anchors and stakes
Boom	Sorbent Boom	5 to 8 in. dia.	Feet	3400	
Pads and Sweep	Sorbent		Bale	40	
Skimmer	Disc or Drum			1	If needed
Response Vessel	Response and Boom Vessel			2	1 each, minimum
Personnel			Crew	6 to 10	2 vessel operators and 2 deckhands, minimum
Vacuum Truck		120	BBL	1	If needed
Storage Tank		20,000	Gallon	5	If needed