

Driving Directions:

From West: Take Hwy 299 east to Willow Creek and turn east onto Hwy 96 to Weitchpec. Turn left on Highway 169 and follow west for 14.7 miles to Notch-ko Village Rd on left.

From East: Take Hwy 96 west from Happy Camp to Weitchpec and turn right onto Hwy 169. Follow west for 14.7 miles to Notch-ko Village Rd on left.

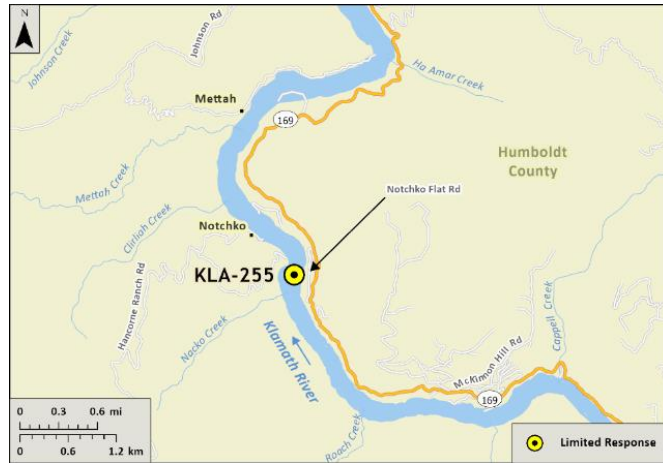
Follow narrow, overgrown, winding dirt road past residences down to the downriver end of the gravel bar.

Note: Hwy 169-mile markers are posted in reverse from west to east. Distance traveled from Weitchpec will not coincide with posted MM.

| | | | |
|--|---|-------------------------------|--|
| Latitude/Longitude: 41.29235, -123.86317 | Highway Postmile: Hwy 169 HUM 19.8 | Railroad Milepost: N/A | Cell Service: No - Verizon tested |
|--|---|-------------------------------|--|

Nearest Address: N/A

Overview Street Map



Hazards, Restrictions and Advice for Responders

- Responders should be aware of seasonal swift water concerns, swift waters in winter and spring. See nearest gauge for flow information at: [CNRFC - Hydrology - River Guidance - Graphical RVF - ONSC1 \(noaa.gov\)](http://cnrfc.noaa.gov/hydrology/river-guidance-graphical-rvf-onsc1)
- Hwy 169 is narrow and has no centerline. Local traffic can be unsafe, drive with caution. Access road to site is very rough, narrow, and steep, 4WD recommended.
- Toxic algal blooms have been known to occur during periods of warm weather and low river flow. Avoid water contact during these conditions. The following web site tracks voluntary reporting of locations where toxic algal blooms have been reported: https://mywaterquality.ca.gov/habs/where/freshwater_events.html

Resources-At-Risk

Ecological: Bald Eagle, California Condor, Northern Spotted Owl, Osprey, Fisher, River Otter, Chinook Salmon, Coho Salmon, Coast Cutthroat Trout, Green Sturgeon, Pacific Lamprey, Steelhead, Western Pond Turtle, Foothill Yellow-legged Frog, Pacific Tailed Frog, Southern Torrent Salamander

Economic: Fishing guide services, tribal and recreational fishing, local tourism, rafting guide services

Tribal: Contact the Native American Heritage Commission at (916) 373-3710.

Cultural and Historic: Contact the Northwest Information Center at (707) 588-8455.

Site Description and Field Notes

| | | | | |
|--|--|--|--|--|
| <p>Site Location/Segment: KLA-HM-C-010</p> | <p>Site Description and Field Notes: The site is a large gravel bar downriver from Weitchpec within the Yurok Reservation with a seasonal dock for the Tribe's water taxi. There are no amenities or improvements at this site. There is a good collection site along the RR shoreline, but the gravel bar is steep. Exercise caution for foot access. Elevation is ~95 feet.</p> | | | |
| <p>Gradient: medium/high</p> | <p>River Width: 82 m (270 ft)</p> | <p>Vehicular Access: 4WD vehicles can access road to river bar.</p> | <p>Recreational Use: Fishing, human contact, tribal.</p> | <p>Boat Launches: No improved launch facility nearby but small vessels can be launched on site from gravel bar.</p> |
| <p>Site Contact/s: Yurok Tribe Spill Hotline (707) 954-0462</p> | <p>Yurok Tribe Office of Emergency Services Duty Officer (707) 951-6844</p> | | <p>Yurok Tribe, Klamath Office (707) 482-1350 Yurok Tribe, Weitchpec Office (530) 625-4130</p> | |
| <p>ESI Shoreline Type:</p> | <p>Vegetated, steeply-sloping bluffs (8F), Sandy bars and gently sloping banks (4), Mixed sand and gravel bars and gently sloping banks (5)</p> | | | |

Site Images

Upstream



Downstream



Straight Across



RR = River Right RL = River Left

Photo Date: 5/29/2019

Site Objectives: Deflect product to the RR shoreline for collection using swift water boom.

Implementation: Deploy up to 850 feet swift water boom from RL to a collection pocket on RR. Consider adding 200 feet additional boom for shoreline protection at collection site. Collect floating product with sorbents for disposal. Deploy cascading sections of boom if needed (400-600 feet).

Staging Area Location and Capabilities/Amenities/Waste Management: Gravel bar is large enough to provide for small staging and waste management area but there are no improvements on site and the access road is narrow and steep. Collection may be difficult due to steep bank.

Response Strategy Map (overview)

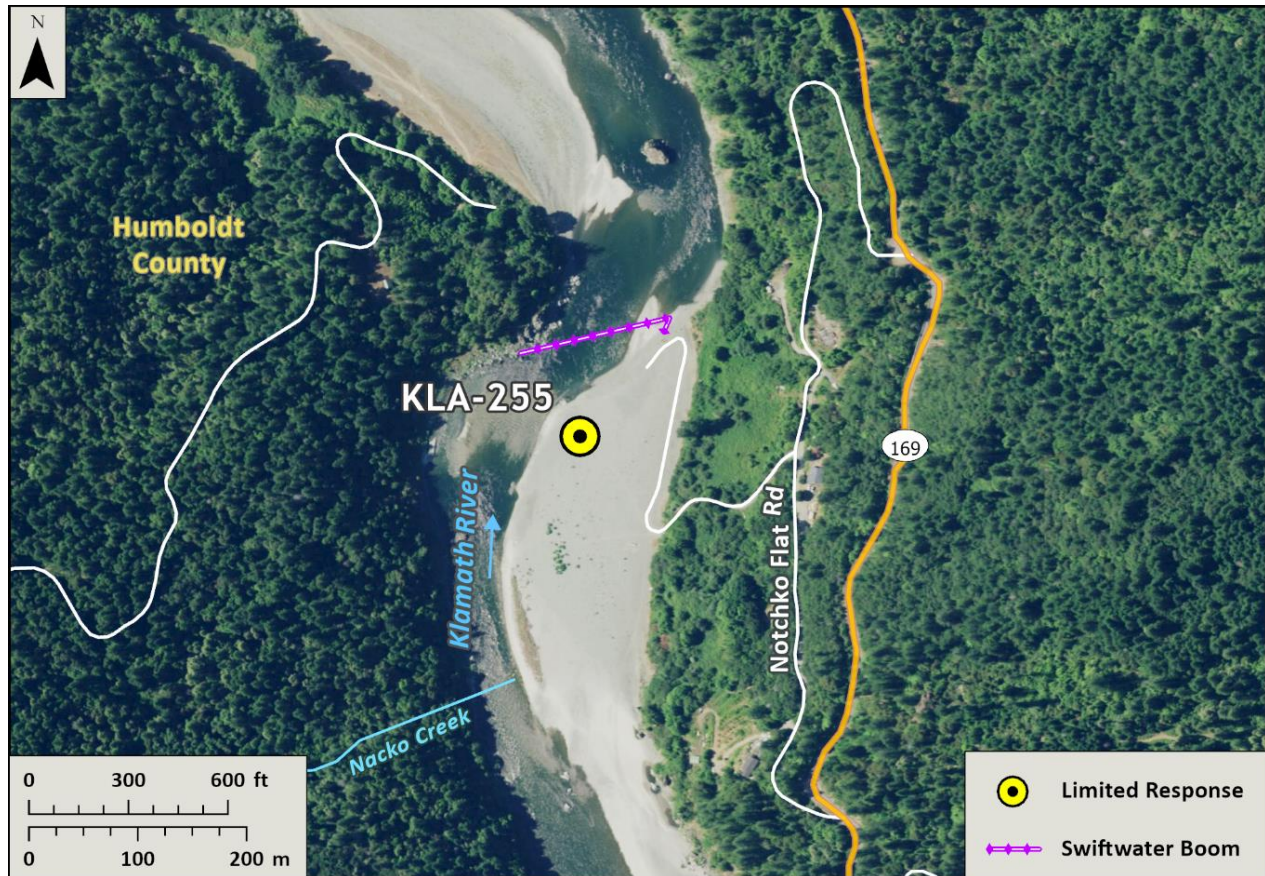


Table of Response Resources

| Type | Sub-Type | Size | Unit | Quantity | Special Equipment or Comments |
|-----------------|--------------------------|-------------------|------|----------|---|
| Boom | Swift Water Boom | 8 to 12 in. skirt | Feet | 1,050 | Need ancillary equipment including anchors and stakes |
| Boom | Sorbent Boom | 5 to 8 in. dia. | Feet | 2,100 | |
| Pads and Sweep | Sorbent | | Bale | 40 | |
| Response Vessel | Response and Boom Vessel | | | 2 | 1 each, minimum. Kayaks, rafts, or shallow draft vessels recommended. |
| Personnel | | | Crew | 6 to 10 | 2 vessel operators and 2 deckhands, minimum |