

Driving Directions:

From West: Take Hwy 299 to Willow Creek and turn east onto Hwy 96. Take Highway 96 to Weitchpec, turn left on Highway 169 and follow west for 10.4 miles to unsigned road on left.

From East: Take Hwy 96 west from Happy Camp to Weitchpec and turn right on Highway 169 and follow west for 10.4 miles to unsigned road on left.

Follow narrow winding dirt road down to the downriver end of the gravel bar. This is the first left turn after Lower Kep'el Rd and the retaining wall.

Note: Hwy 169 mile markers are posted in reverse from west to east. Distance traveled from Weitchpec will not coincide with posted MM.

Latitude/Longitude: 41.27523, -123.81352	Highway Postmile: Hwy 169 HUM 23.17	Railroad Milepost: N/A	Cell Service: No - Verizon tested
--	---	-------------------------------	--

Nearest Address: N/A

Overview Street Map



Hazards, Restrictions and Advice for Responders

- Responders should be aware of seasonal swift water concerns, swift waters in winter and spring. See nearest gauge for flow information at: [CNRFC - Hydrology - River Guidance - Graphical RVF - ONSC1 \(noaa.gov\)](http://CNRFC-Hydrology-River-Guidance-Graphical-RVF-ONSC1.noaa.gov)
- Hwy 169 is narrow and has no centerline. Local traffic can be unsafe, drive with caution. Access road to site is unmarked, narrow, and steep.
- Toxic algal blooms have been known to occur during periods of warm weather and low river flow. Avoid water contact during these conditions. The following web site tracks voluntary reporting of locations where toxic algal blooms have been reported: https://mywaterquality.ca.gov/habs/where/freshwater_events.html

Resources-At-Risk

Ecological: Bald Eagle, California Condor, Northern Spotted Owl, Osprey, Fisher, Chinook Salmon, Coho Salmon, Coast Cutthroat Trout, Green Sturgeon, Pacific Lamprey, Steelhead, Western Pond Turtle, Foothill Yellow-legged Frog, Pacific Tailed Frog, Southern Torrent Salamander, Robust False Lupine

Economic: Rafting guide services, fishing guide services, local tourism

Tribal: Contact the Native American Heritage Commission at (916) 373-3710.

Cultural and Historic: Contact the Northwest Information Center at (707) 588-8455.

Site Description and Field Notes

<p>Site Location/Segment: KLA-HM-C-005</p>	<p>Site Description and Field Notes: The site is a large gravel bar within the Yurok Reservation downriver from Weitchpec. There are no amenities or improvements at this site. There is a good collection site along the RR shoreline. Elevation is ~115 feet.</p>			
<p>Gradient: low</p>	<p>River Width: 100 m (330 ft)</p>	<p>Vehicular Access: Most vehicles can access road to river bar.</p>	<p>Recreational Use: Fishing, human contact, tribal.</p>	<p>Boat Launches: No improved launch facility nearby but small motorized vessels can be launched on site from gravel bar.</p>
<p>Site Contact/s: Yurok Tribe Spill Hotline (707) 954-0462</p>	<p>Yurok Tribe Office of Emergency Services Duty Officer (707) 951-6844</p>		<p>Yurok Tribe, Klamath Office (707) 482-1350 Yurok Tribe, Weitchpec Office (530) 625-4130</p>	
<p>ESI Shoreline Type:</p>	<p>Vegetated, steeply-sloping bluffs (8F), Sandy bars and gently sloping banks (4), Mixed sand and gravel bars and gently sloping banks (5)</p>			

Site Images

Upstream



Downstream



Straight Across



RR = River Right RL = River Left

Photo Date: 5/29/2019

Site Objectives: Deflect product to the RR shoreline for collection using swift water boom.

Implementation: Deploy up to 1,000 feet swift water boom from RL to a collection pocket on RR at gravel bar. Consider adding 200 feet swift water boom for shoreline protection at collection site. Collect floating product with sorbents for disposal, or skimmer if conditions allow.

Staging Area Location and Capabilities/Amenities/Waste Management: Gravel bar is large enough to provide for small staging and waste management area but there are no improvements on site and the access road is narrow and steep.

Response Strategy Map (overview)

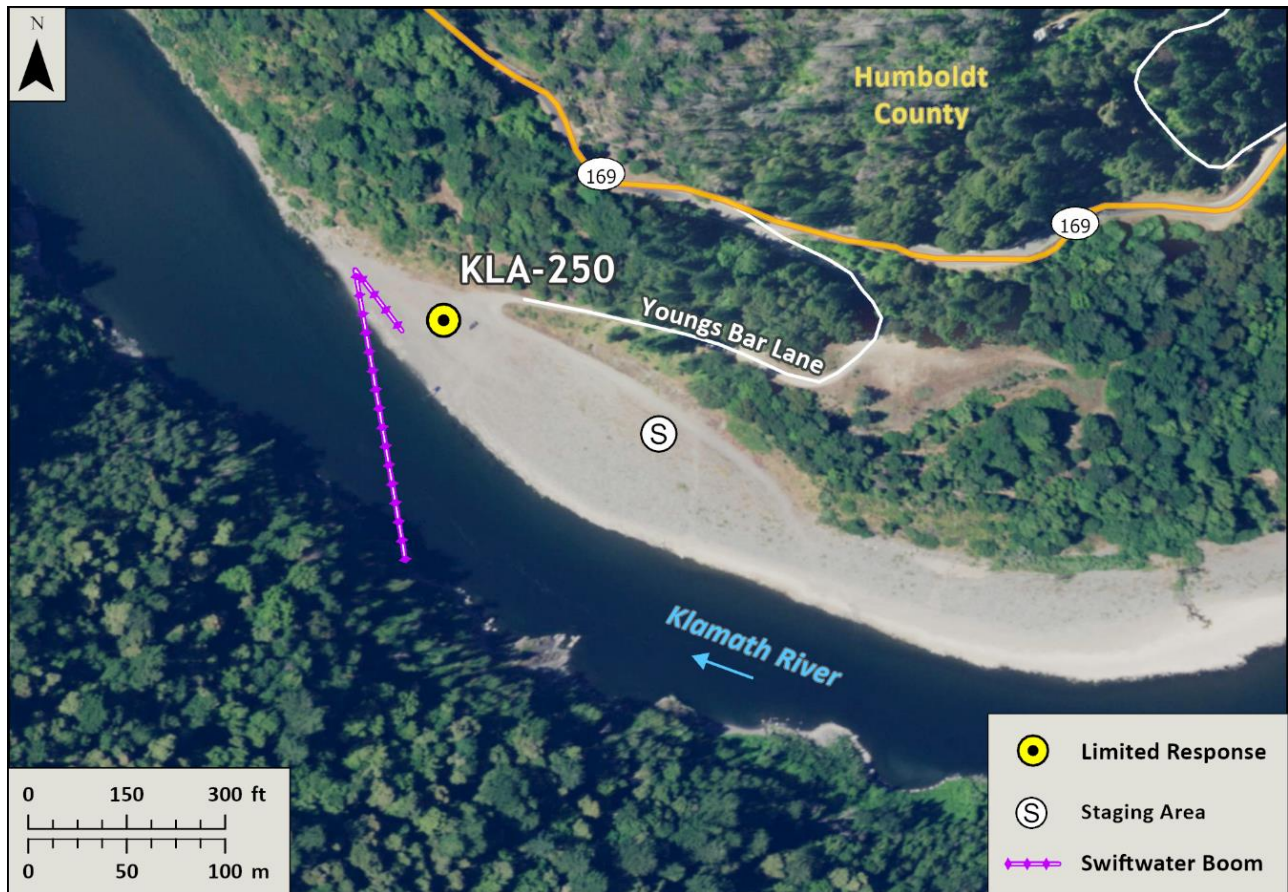


Table of Response Resources

Type	Sub-Type	Size	Unit	Quantity	Special Equipment or Comments
Boom	Swift Water Boom	8 to 12 in. skirt	Feet	1,200	Need ancillary equipment including anchors and stakes
Boom	Sorbent Boom	5 to 8 in. dia.	Feet	2,400	
Pads and Sweep	Sorbent		Bale	40	
Response Vessel	Response and Boom Vessel			2	1 each, minimum. Kayaks, rafts, or shallow draft vessels recommended.
Personnel			Crew	6 to 10	2 vessel operators and 2 deckhands, minimum