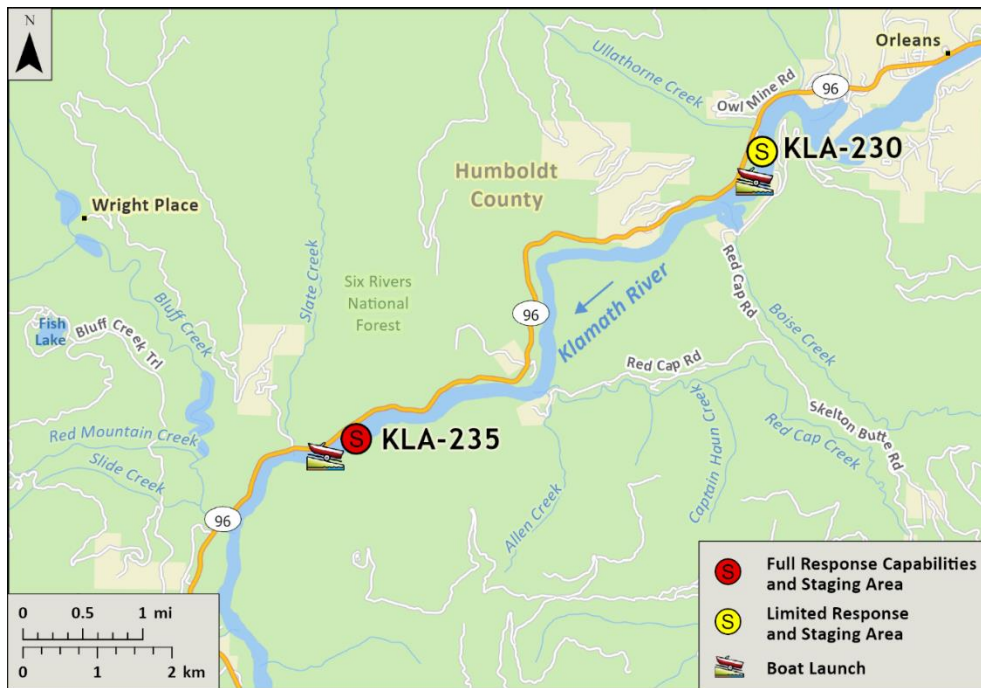


<p>Driving Directions:</p>	<p>From West: Take Hwy 299 east to Willow Creek and turn east on Hwy 96 for 30.3 miles to the Big Bar River access road on right, follow gravel road to bottom of hill and onto the river bar.</p> <p>From East: Take Hwy 96 west from Happy Camp and follow for 51.6 miles to the Big Bar River access road on left, follow gravel road to bottom of hill and onto the river bar.</p>		
<p>Latitude/Longitude: 41.25154, -123.63506</p>	<p>Highway Postmile: Hwy 96 HUM 30.25</p>	<p>Railroad Milepost: N/A</p>	<p>Cell Service: No - Verizon Tested</p>
<p>Nearest Address: N/A</p>			

Overview Street Map



Hazards, Restrictions and Advice for Responders

- Responders should be aware of seasonal swift water concerns. See nearest gauge for flow information at: [CNRFC - Hydrology - River Guidance - Graphical RVF - ONSC1 \(noaa.gov\)](http://CNRFC-Hydrology-River-Guidance-Graphical-RVF-ONSC1.noaa.gov)
- Boat launches may become impacted/unusable during years with excess sediment load being transported downstream.
- Toxic algal blooms have been known to occur during periods of warm weather and low river flow. Avoid water contact during these conditions. The following website tracks voluntary reporting of locations where toxic algal blooms have been reported: https://mywaterquality.ca.gov/habs/where/freshwater_events.html

Resources-At-Risk

Ecological: American Goshawk, Bald Eagle, Great Blue Heron, Northern Spotted Owl, Osprey, Fisher, Chinook Salmon, Coho Salmon, Green Sturgeon, Lower Klamath Marbled Sculpin, Pacific Lamprey, Steelhead, Western Pond Turtle, Foothill Yellow-legged Frog, Southern Torrent Salamander, Heckner's Lewisia, Pacific Gilia

Economic: rafting guide services, fishing guide services




Tribal: Contact the Native American Heritage Commission at (916) 373-3710.

Cultural and Historic: Contact the Northwest Information Center at (707) 588-8455.

Site Description and Field Notes

Site Location/Segment: KLA-HM-B-005	Site Description and Field Notes: This site is managed by Six Rivers National Forest and provides public access to the river. There are no amenities. Elevation is ~285-ft.			
Gradient: Low (summer flow)	River Width: 48 m (156 ft)	Vehicular Access? All vehicle types can access this location	Recreational Use? Camping, fishing, rafting/kayaking, water contact	Boat Launches: Unimproved launch site on gravel bar for small vessels
Site Contact/s: Six Rivers Natl Forest Orleans Ranger District (530) 627-3291	Yurok Tribe Spill Hotline (707) 954-0462		Yurok Tribe Office of Emergency Services - Duty Officer (707) 951-6844	
ESI Shoreline Type:	Vegetative steeply sloping bluffs (8F); Gravel bars and steeply-sloping bluffs (6A)			

Site Images

<p>Upstream</p> 	<p>Downstream</p> 
<p>Straight Across</p> 	
<p>RR = River Right RL = River Left</p>	<p>Photo Date: 9/24/2019</p>

Site Objectives: Deflection boom with product collection and shoreline protection.

Implementation: Start from river-left shoreline above gravel bar and deploy up to 500 feet of swift water boom toward eddy on river right. Collect product with sorbents or skimmer and pump directly to vacuum truck or tanks on shore. Consider additional 200 feet of boom for shoreline protection.

Staging Area Location and Capabilities/Amenities/Waste Management: Stage equipment and manage wastes away from river on highway shoulder or access road above gravel bar.

Response Strategy Map (overview)

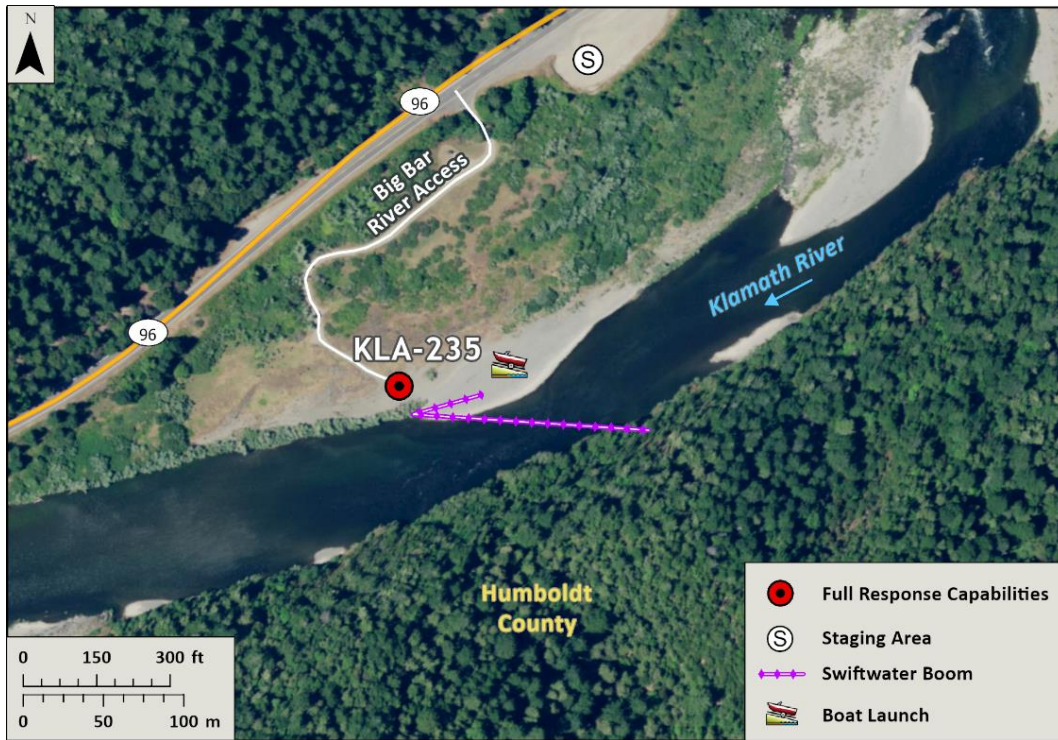


Table of Response Resources

Type	Sub-Type	Size	Unit	Quantity	Special Equipment or Comments
Boom	Swift Water Boom	8 to 12 in. skirt	Feet	700	Need ancillary equipment including anchors and stakes
Boom	Sorbent Boom	5 to 8 in. dia.	Feet	1,400	
Pads and Sweep	Sorbent		Bale	40	
Skimmer	Disc or Drum			1	If needed
Response Vessel	Response and Boom Vessel			1	1 each, minimum. Kayaks, rafts, or shallow draft vessels recommended.
Personnel			Crew	2 to 4	2 vessel operators and 2 deckhands, minimum
Vacuum Truck		120	BBL	1	If needed
Storage Tank		20,000	Gallon	5	If needed