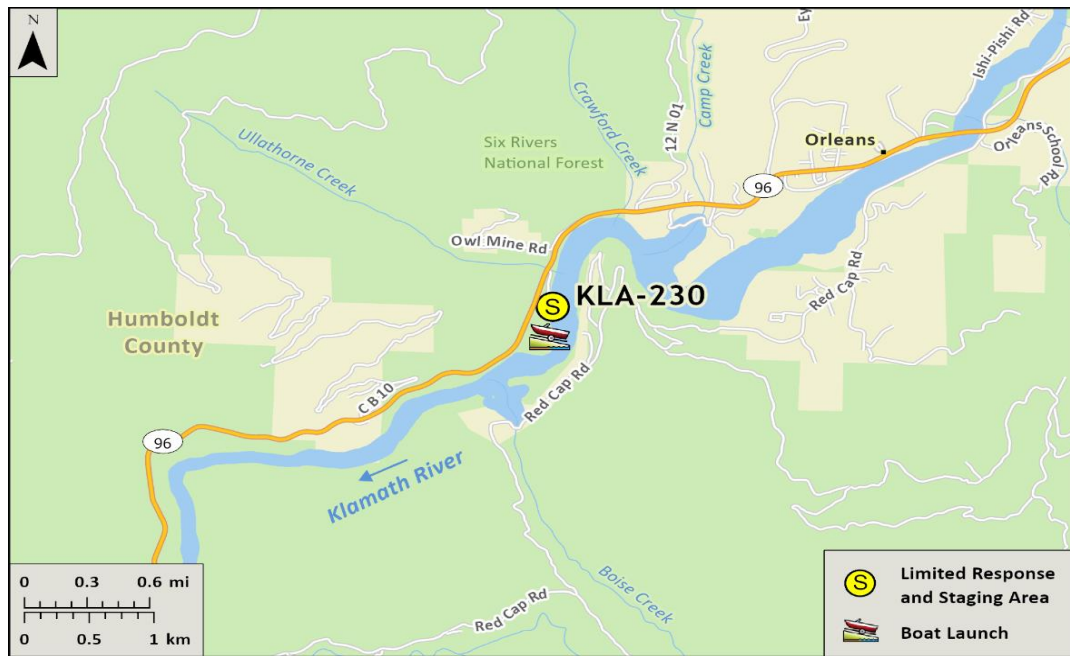


Driving Directions:	<p>From West: Take Hwy 299 east to Willow Creek, turn east onto Hwy 96 and follow 36.35 miles to Ullathorne River Access on the right. Follow gravel road to bottom, turn left on spur at upriver end of the river bar.</p> <p>From East: Take Hwy 96 west from Happy Camp and follow for 45.5 miles to Ullathorne River Access on the left. Follow gravel road to bottom, turn left on spur at upriver end of the river bar.</p>		
Latitude/Longitude: 41.28780, -123.57096	Highway Postmile: Hwy 96 HUM 36.35	Railroad Milepost: N/A	Cell Service: No - Verizon tested
Nearest Address: N/A			

Overview Street Map



Hazards, Restrictions and Advice for Responders

- Responders should be aware of seasonal swift water concerns. See nearest gauge for flow information at: [CNRFC - Hydrology - River Guidance - Graphical RVF - ONSC1 \(noaa.gov\)](http://CNRFC - Hydrology - River Guidance - Graphical RVF - ONSC1 (noaa.gov))
- Boat launches may become impacted/unusable during years with excess sediment load being transported downstream.
- Toxic algal blooms have been known to occur during periods of warm weather and low river flow. Avoid water contact during these conditions. The following website tracks voluntary reporting of locations where toxic algal blooms have been reported: https://mywaterquality.ca.gov/habs/where/freshwater_events.html

Resources-At-Risk

Ecological: Bald Eagle, Black Swift, Great Blue Heron, Northern Spotted Owl, Osprey, Fisher, Chinook Salmon, Coho Salmon, Green Sturgeon, Lower Klamath Marbled Sculpin, Pacific Lamprey, Steelhead, Western Pond Turtle, Foothill Yellow-legged Frog, Southern Torrent Salamander, Suckley's Cuckoo Bumble Bee, Western Bumble Bee, Columbia Yellow Cress, Robust False Lupine, Wolf's Evening Primrose

Economic: Fishing guide services, local tourism, rafting, kayaking

Tribal: Contact the Native American Heritage Commission at (916) 373-3710.

Cultural and Historic: Contact the Northwest Information Center at (707) 588-8455.

Site Description and Field Notes

<p>Site Location/Segment: KLA-HM-A-015</p>	<p>Site Description and Field Notes: This response site is within Six Rivers National Forest. The site is at the upriver end of the river bar and provides river access for limited or manual cleanup. There are no amenities at this location. Elevation is ~340 feet.</p>			
<p>Gradient: low (summer flow)</p>	<p>River Width: 100 m (330 ft)</p>	<p>Vehicular Access: Most vehicles can access road to river bar.</p>	<p>Recreational Use: Fishing, rafting, kayaking and human contact.</p>	<p>Boat Launches: No improved launch facility nearby but hand launch of small vessels is feasible, shallow draft vessel recommended.</p>
<p>Site Contact/s:</p>	<p>Six Rivers National Forest Orleans Ranger District (530) 627-3291</p>		<p>Karuk Tribe (530) 493-1600</p>	
<p>ESI Shoreline Type:</p>	<p>Vegetated low banks (9B), Gravel bars and gently sloping banks (6A)</p>			

Site Images

Upstream



Downstream



Straight Across



RR = River Right RL = River Left

Photo Date: 7/25/2023

Site Objectives: Deflect product to the river right shoreline for collection using swift water boom.

Implementation: Deploy up to 1000 feet of swift water boom from RL to a collection pocket near the launch site on RR. Consider additional 200 feet of swift water boom for shoreline protection. Collect floating product with sorbents for disposal.

Staging Area Location and Capabilities/Amenities/Waste Management: Area above response site or highway shoulder are large enough to provide small staging area and waste management area but there are no improvements at site.

Response Strategy Map (overview)

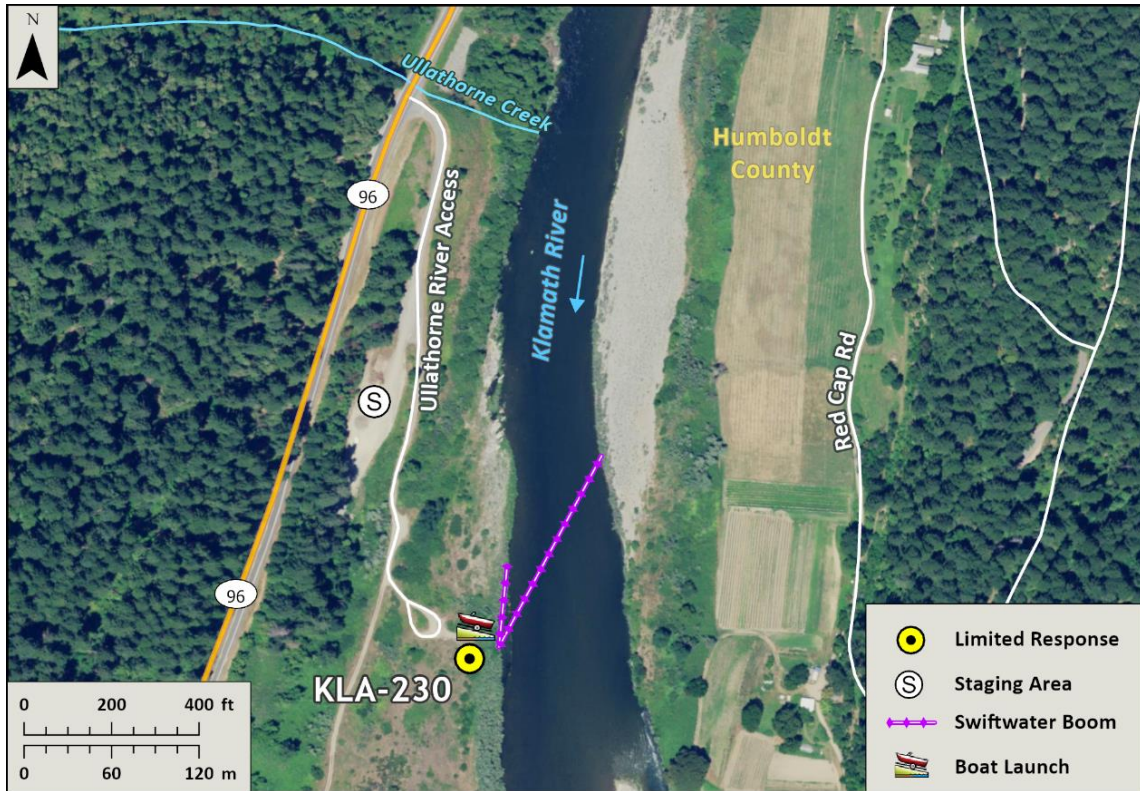


Table of Response Resources

Type	Sub-Type	Size	Unit	Quantity	Special Equipment or Comments
Boom	Swift water boom	8 to 12 in. skirt	Feet	1200	Need ancillary equipment including anchors and stakes
Boom	Sorbent boom	5 to 8 in. dia.	Feet	2400	
Pads and Sweep	Sorbent		Bale	40	
Response Vessel				1	1 minimum, hand launch limited to punts, kayaks, and rafts
Personnel			Crew	2 to 4	