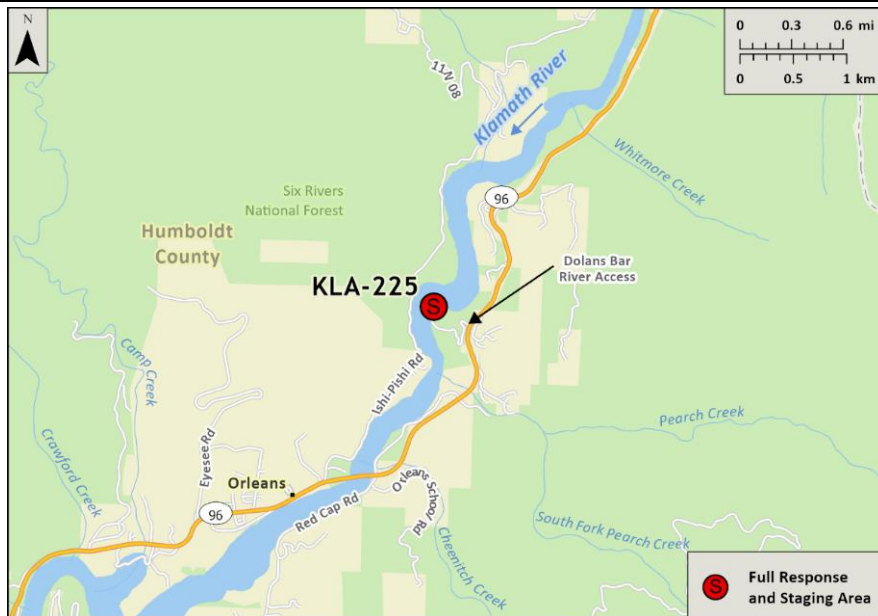


Driving Directions:	<p>From West: Take Hwy 299 east to Willow Creek, turn left on Hwy 96 and travel east for 39.89 miles to the Dolans Bar river access on the left and follow the dirt road to the bottom of the hill. Turn right to upriver end of gravel bar.</p> <p>From East: Take Hwy 96 west from Happy Camp and travel 42 miles to the Dolans Bar river access on the right and follow the dirt road to the bottom of the hill. Turn right to upriver end of gravel bar.</p>		
Latitude/Longitude: 41.318521, -123. 526003	Highway Postmile: Hwy 96 HUM 39.89	Railroad Milepost: N/A	Cell Service: No - Verizon Tested

Nearest Address: N/A

Overview Street Map



Hazards, Restrictions and Advice for Responders

- Responders should be aware of seasonal swift water concerns, swift waters in winter and spring. Tribal fishing nets and submerged objects present, uneven terrain at response site. See nearest gauge for flow information at: [CNRFC - Hydrology - River Guidance - Graphical RVF - ONSC1 \(noaa.gov\)](https://www.cnr.gov/hydrology/riverguidance/graphicalrvf-onsc1)
- Toxic algal blooms have been known to occur during periods of warm weather and low river flow. Avoid water contact during these conditions. The following web site tracks voluntary reporting of locations where toxic algal blooms have been reported: https://mywaterquality.ca.gov/habs/where/freshwater_events.html
- Narrow access road.

Resources-At-Risk

Ecological: Bald Eagle, Black Swift, Great Blue Heron, Northern Spotted Owl, Osprey, Chinook Salmon, Coho Salmon, Green Sturgeon, Lower Klamath Marbled Sculpin, Pacific Lamprey, Steelhead, Western Pond Turtle, Foothill Yellow-legged Frog, Suckley's Cuckoo Bumble Bee, Western Bumble Bee, Columbia Yellow Cress, Robust False Lupine

Economic: Fishing guide services, local tourism, rafting, kayaking, water contact

Tribal: Contact the Native American Heritage Commission at (916) 373-3710.

Cultural and Historic: Contact the Northwest Information Center at (707) 588-8455.

Site Description and Field Notes

<p>Site Location/Segment: KLA-HM-A-010</p>	<p>Site Description and Field Notes: This response site managed by Six Rivers National Forest provides public unimproved river access and the road is accessible to most vehicles. Launch site on gravel bar. Site has a public outhouse. Elevation is ~375 feet.</p>			
<p>Gradient: low (summer flow)</p>	<p>River Width: 92 m (300 ft)</p>	<p>Vehicular Access: Most vehicles can access this location.</p>	<p>Recreational Use: Camping, fishing, rafting, kayaking, water contact.</p>	<p>Boat Launches: Unimproved launch site on gravel bar for small vessels.</p>
<p>Site Contact/s:</p>	<p>Six Rivers National Forest Orleans Ranger District (530) 627-3291</p>		<p>Karuk Tribe (530) 493-1600</p>	
<p>ESI Shoreline Type:</p>	<p>Exposed rocky banks (1A), Mixed sand and gravel bars and gently sloping banks (5), Vegetated, steeply sloping bluffs (8F)</p>			

Site Images

Upstream



Downstream



Straight Across



RR = River Right RL = River Left

Photo Date: 7/25/2023

Site Objectives: Deflection to collection when flows are low enough to safely implement

Implementation: Deploy up to 900 feet of swift water boom from river right to collection area on river left. Consider adding 200 feet of swift water boom for shoreline protection at collection site. Collect floating product with sorbents or skimmer if feasible.

Staging Area Location and Capabilities/Amenities/Waste Management: Stage equipment and manage wastes away from river on gravel bar. Public outhouse at site.

Response Strategy Map (overview)

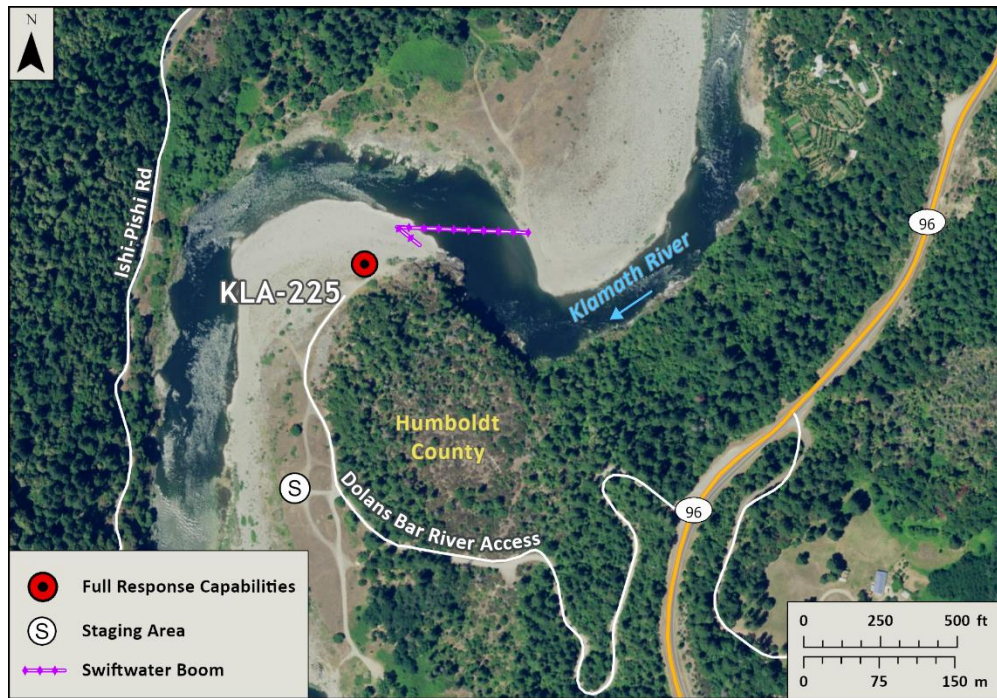


Table of Response Resources

Type	Sub-Type	Size	Unit	Quantity	Special Equipment or Comments
Boom	Swift Water Boom	8 to 12 in. skirt	Feet	1100	Need ancillary equipment including anchors and stakes
Boom	Sorbent Boom	5 to 8 in. dia.	Feet	2200	
Pads and Sweep	Sorbent		Bale	40	
Skimmer	Disc or Drum			1	If needed
Response Vessel	Response and Boom Vessel			1	1 minimum. Shallow draft vessels recommended.
Personnel			Crew	6 to 10	2 vessel operators and 2 deckhands, minimum
Vacuum Truck		120	BBL	1	If needed
Storage Tank		20,000	Gallon	5	If needed