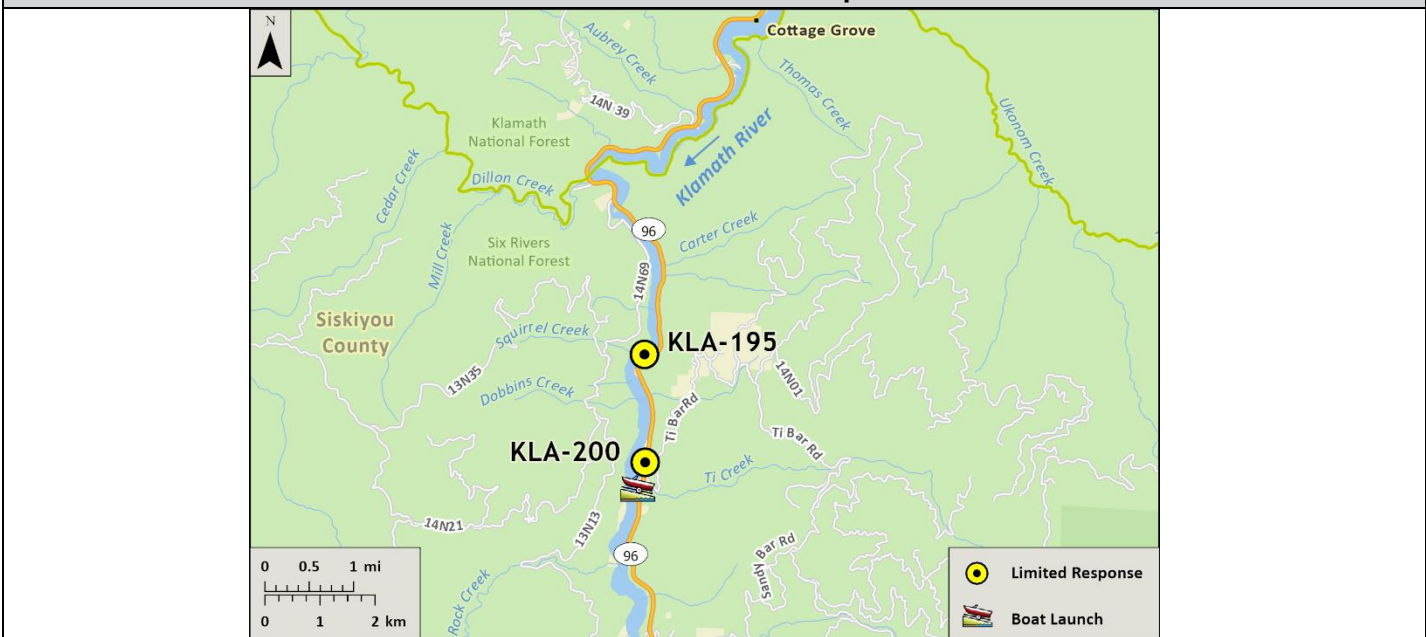


<p>Driving Directions:</p>	<p>From North: Take I-5 South and take Exit 786, turn west (left) onto Anderson Grade Road and cross over the Klamath River. Turn south (left) onto Hwy 96 toward Happy Camp/Willow Creek. From the USFS Happy Camp Ranger District office, proceed 26.9 miles west to the Ti Bar River Access.</p> <p>From South: Take I-5 North and take Exit 786, merge directly onto Hwy 96. Continue south and west on Hwy 96 to Happy Camp. From the USFS Happy Camp Ranger District office, proceed 26.9 miles west to the Ti Bar River Access.</p>		
<p>Latitude/Longitude: 41.52716, -123.52869</p>	<p>Highway Postmile: Hwy 96 SIS 12.09</p>	<p>Railroad Milepost: N/A</p>	<p>Cell Service: No - Verizon Tested</p>

Nearest Address: 17 miles from Orleans, CA

Overview Street Map



Hazards, Restrictions and Advice for Responders

- Responders should be aware of seasonal swift water concerns. See nearest gauge for flow information at: [CNRFC - Hydrology - River Guidance - Graphical RVF - SEIC1 \(noaa.gov\)](http://cnrfc.noaa.gov/hydrology/river-guidance/graphical-rvf-seic1)
- Boat launches may become impacted/unusable during years with excess sediment load being transported downstream or inaccessible during high flow conditions
- Toxic algal blooms have been known to occur during periods of warm weather and low river flow. Avoid water contact during these conditions. The following website tracks voluntary reporting of locations where toxic algal blooms have been reported: https://mywaterquality.ca.gov/habs/where/freshwater_events.html

Resources-At-Risk

Ecological: Chinook Salmon, Coho Salmon, Pacific Lamprey, Klamath River Lamprey, Lower Klamath Marbled Sculpin, Northern Spotted Owl, Steelhead, Foothill Yellow-legged Frog, Pacific Tailed Frog, Southern Torrent Salamander, Western Pond Turtle

Economic: Rafting guide services, fishing guide services, local tourism

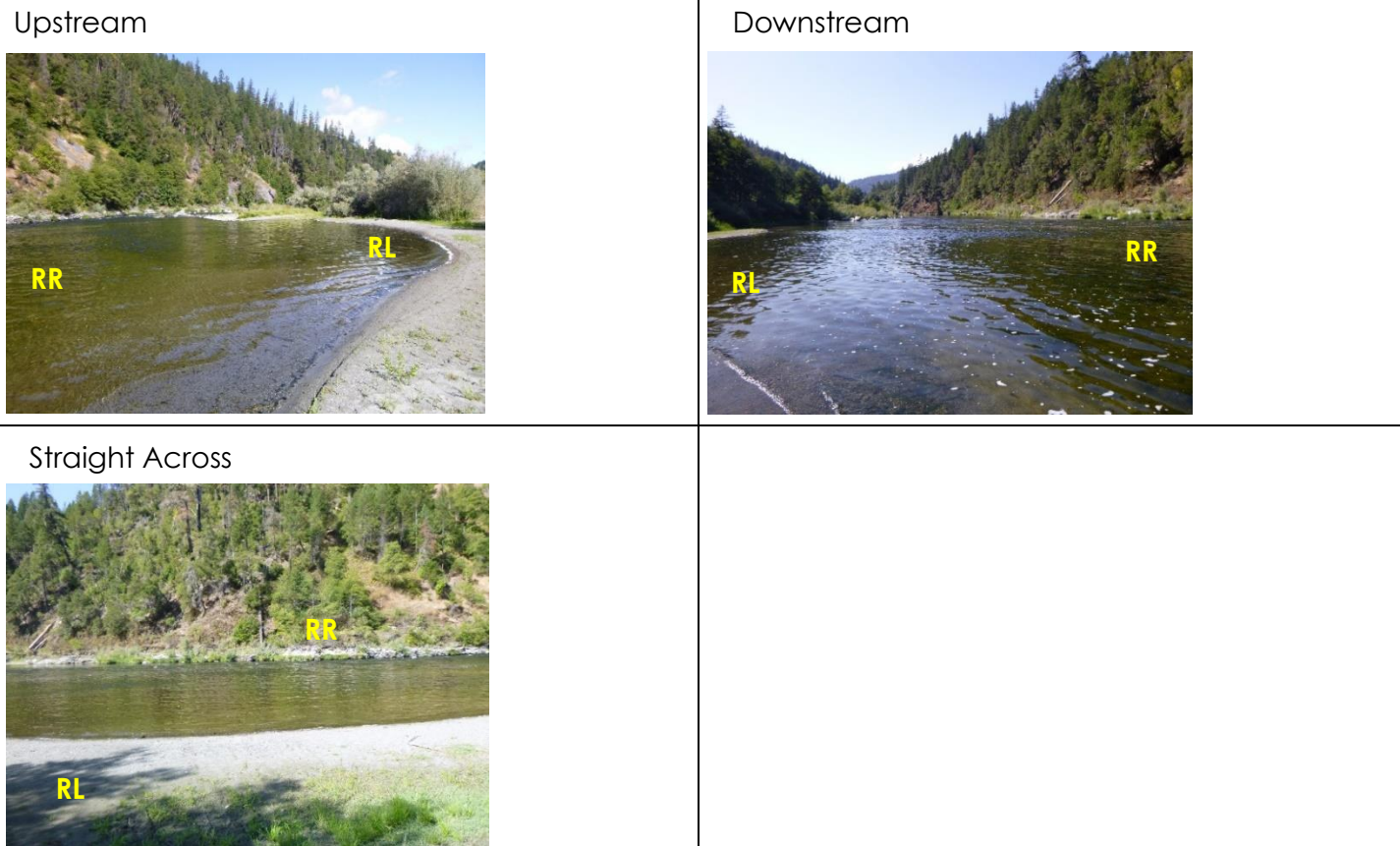
Tribal: Contact the Native American Heritage Commission at (916) 373-3710.

Cultural and Historic: Contact the Northeast Information Center at (530) 898-6256.

Site Description and Field Notes

<p>Site Location/Segment: KLA-SK-G-015</p>	<p>Site Description and Field Notes: There is a paved road at this site with a gravel dirt road that leads to the river's edge. The launch has a steep drop off with may require a 4-wheel drive vehicle to successfully launch. This site is not suitable for jet boats. A toilet but no potable water is available.</p>			
<p>Gradient: Low</p>	<p>River Width: 59.44 m (195 ft)</p>	<p>Vehicular Access: All vehicle types can access this location.</p>	<p>Recreational Use: Camping, fishing, rafting/kayaking, water contact.</p>	<p>Boat Launches: Unimproved sandy boat launch located across from the restroom. Responders cannot drive to the river's edge. Raft or kayaks recommended.</p>
<p>Site Contact/s:</p>	<p>USFS – Klamath National Forest Happy Camp Ranger District (530) 493-2243</p>		<p>Karuk Tribe (530) 493-1600</p>	
<p>ESI Shoreline Type:</p>	<p>Mixed sand and gravel bars and gently sloping banks (5); Vegetated steeply sloping bluffs (8F)</p>			

Site Images



RR = River Right RL = River Left

Photo Date: 9/10/2019

Site Objectives: Deflection boom with product collection and shoreline protection.

Implementation: Start from river-right shoreline above the boat launch site and deploy 600 feet of swiftwater boom toward eddy at boat launch. Collect product with skimmer and pump directly to vacuum truck or tanks on shore. Deploy additional 200 feet of boom for shoreline protection.

Staging Area Location and Capabilities/Amenities/Waste Management: Stage equipment and manage wastes at parking area above the unimproved boat launch.

Response Strategy Map (overview)

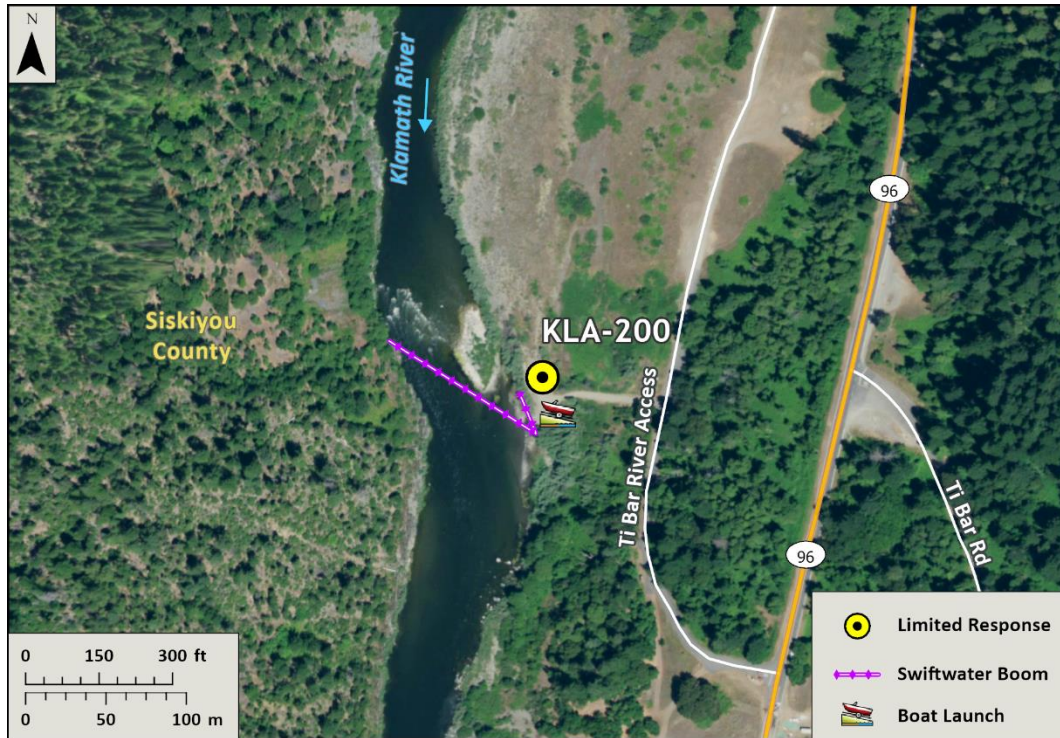


Table of Response Resources

Type	Sub-Type	Size	Unit	Quantity	Special Equipment or Comments
Boom	Swiftwater	8 to 12-in. skirt	Feet	800	Need ancillary equipment including anchors and stakes
Boom	Sorbent	5 to 8-in. dia.	Feet	2,500	
Pads and Sweep	Sorbent		Bale	40	
Skimmer	Disc or Drum			2	If needed
Response Vessel	Response and Boom Vessel			2	1 each, minimum. Kayaks or rafts recommended.
Personnel			Crew	6 to 10	2 vessel operators and 2 deckhands, minimum
Vacuum Truck		70	BBL	1	If needed
Storage Tank		20,000	Gallon	5	If needed