

**Driving Directions:**

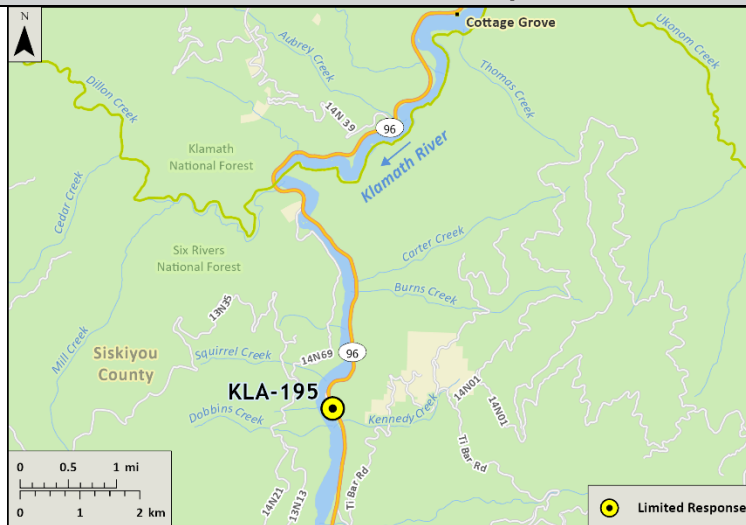
From North: Take I-5 South and take Exit 786, turn west (left) onto Anderson Grade Road and cross over the Klamath River. Turn south (left) onto Hwy 96 toward Happy Camp/Willow Creek. From the USFS Happy Camp Ranger District office, proceed 25.7 miles west to the Persido Bar River Access.

From South: Take I-5 North and take Exit 786, merge directly onto Hwy 96. Continue south and west on Hwy 96 to Happy Camp. From the USFS Happy Camp Ranger District office, proceed 25.7 miles west to the Persido Bar River Access.

<b>Latitude/Longitude:</b> 41.54500, -123.52969	<b>Highway Postmile:</b> Hwy 96 SIS 13.46	<b>Railroad Milepost:</b> N/A	<b>Cell Service:</b> No - Verizon Tested
--	--	-------------------------------	--

**Nearest Address:** 19 miles from Orleans, CA

**Overview Street Map**



**Hazards, Restrictions and Advice for Responders**

- Need 4WD vehicle to launch raft or kayak due to loose, unconsolidated sandy launch site. Rapids begin about 300 yards downstream of launch site.
- Responders should be aware of seasonal swift water concerns. See nearest gauge for flow information at: [CNRFC - Hydrology - River Guidance - Graphical RVF - SEIC1 \(noaa.gov\)](https://www.cnr.gov/hydrology/riverguidance/graphicalrvf/seic1)
- Boat launches may become impacted/unusable during years with excess sediment load being transported downstream or inaccessible during high flow conditions.
- Toxic algal blooms have been known to occur during periods of warm weather and low river flow. Avoid water contact during these conditions. The following website tracks voluntary reporting of locations where toxic algal blooms have been reported: [https://mywaterquality.ca.gov/habs/where/freshwater\\_events.html](https://mywaterquality.ca.gov/habs/where/freshwater_events.html)

**Resources-At-Risk**

**Ecological:** Bald Eagle, Fisher – West Coast DPS, Chinook Salmon, Coho Salmon, Pacific Lamprey, Klamath River Lamprey, Northern Spotted Owl, Steelhead, Foothill Yellow-legged Frog, Southern Torrent Salamander, Western Pond Turtle

**Economic:** Rafting guide services, fishing guide services, local tourism



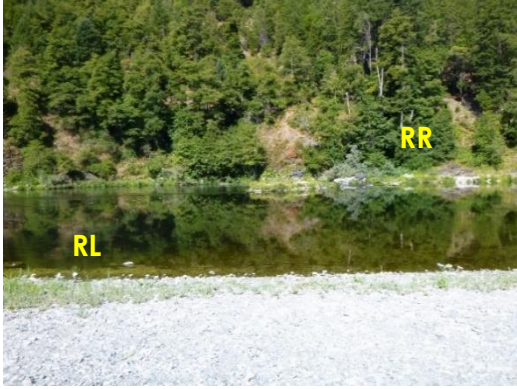
**Tribal:** Contact the Native American Heritage Commission at (916) 373-3710.

**Cultural and Historic:** Contact the Northeast Information Center at (530) 898-6256.

**Site Description and Field Notes**

<p><b>Site Location/Segment:</b> KLA-SK-G-010</p>	<p><b>Site Description and Field Notes:</b> Large boat launch allows enough space for drift boats as well as jet boats to launch. It is also a popular place for rafters. Because of its popularity due to heavy use, parking is only permitted at the south end of the river bar. One Vault toilet but no potable water on site.</p>			
<p><b>Gradient:</b> Low</p>	<p><b>River Width:</b> 82.30 m (270 ft)</p>	<p><b>Vehicular Access:</b> Need 4WD to get to the river's edge. May be able to get 70-bbl vac truck down to gravel bar above launch site.</p>	<p><b>Recreational Use:</b> Camping, fishing, rafting/kayaking, water contact.</p>	<p><b>Boat Launches:</b> Unimproved gravel boat launch located on-site. Raft or kayaks recommended.</p>
<p><b>Site Contact/s:</b></p>	<p>USFS – Klamath National Forest Happy Camp Ranger District (530) 493-2243</p>		<p>Karuk Tribe (530) 493-1600</p>	
<p><b>ESI Shoreline Type:</b></p>	<p>Mixed sand and gravel bars and gently sloping banks (5); Vegetated steeply sloping bluffs (8F)</p>			

**Site Images**

<p>Upstream</p> 	<p>Downstream</p> 
<p>Straight Across</p> 	

**RR = River Right RL = River Left**

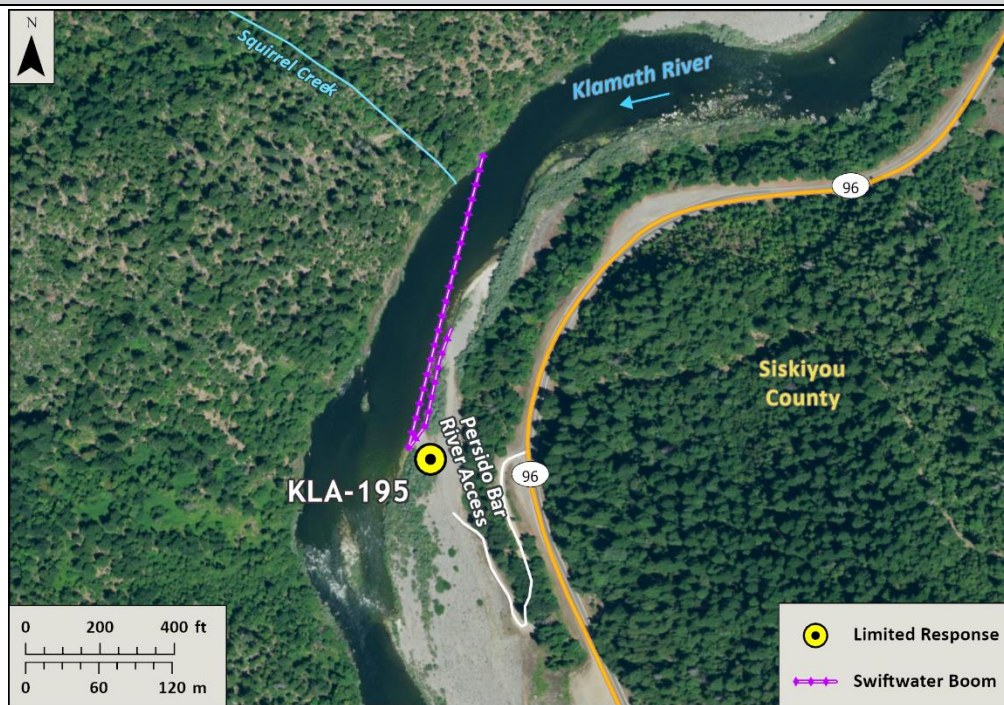
**Photo Date:** 9/10/2019

**Site Objectives:** Deflection boom with product collection and shoreline protection.

**Implementation:** Start from river-right shoreline above the boat launch site and deploy 900 feet of swiftwater boom toward eddy at boat launch. Collect product with skimmer and pump directly to vacuum truck or tanks on shore. Deploy additional 200 feet of boom for shoreline protection.

**Staging Area Location and Capabilities/Amenities/Waste Management:** Stage equipment and manage wastes at the dirt parking area above the unimproved boat launch. There may be additional staging area along Hwy 96 near river access point.

**Response Strategy Map (overview)**



**Table of Response Resources**

Type	Sub-Type	Size	Unit	Quantity	Special Equipment or Comments
Boom	Swiftwater	8 to 12-in. skirt	Feet	1,100	Need ancillary equipment including anchors and stakes
Boom	Sorbent	5 to 8-in. dia.	Feet	3,000	
Pads and Sweep	Sorbent		Bale	40	
Skimmer	Disc or Drum			2	If needed
Response Vessel	Response and Boom Vessel			2	1 each, minimum. Kayaks or rafts recommended.
Personnel			Crew	6 to 10	2 vessel operators and 2 deckhands, minimum
Vacuum Truck		70	BBL	1	If needed
Storage Tank		20,000	Gallon	5	If needed