

Driving Directions:

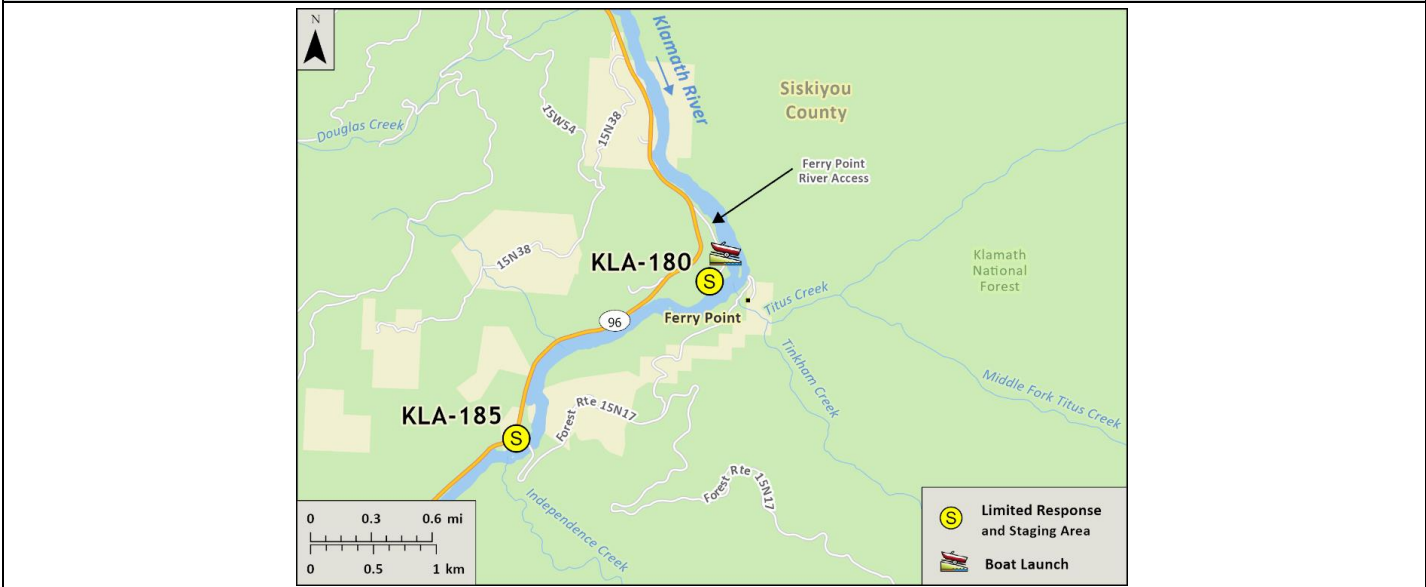
From North: Take I-5 South and take Exit 786, turn west (left) onto Anderson Grade Road and cross over the Klamath River. Turn south (left) onto Hwy 96 toward Happy Camp/Willow Creek. From the USFS Happy Camp Ranger District office, proceed 12.1 miles west to the Ferry Point River Access.

From South: Take I-5 North and take Exit 786, merge directly onto Hwy 96. Continue south and west on Hwy 96 to Happy Camp. From the USFS Happy Camp Ranger District office, proceed 12.1 miles west to the Ferry Point River Access.

Latitude/Longitude: 41.6720, -123.4311	Highway Postmile: Hwy 96 SIS 30.05	Railroad Milepost: N/A	Cell Service: No - Verizon Tested
--	--	-------------------------------	--

Nearest Address: 12 miles from Happy Camp, CA

Overview Street Map



Hazards, Restrictions and Advice for Responders

- Responders should be aware of seasonal swift water concerns. See nearest gauge for flow information at: [CNRFC - Hydrology - River Guidance - Graphical RVF - SEIC1 \(noaa.gov\)](http://cnrfc.noaa.gov/hydrology/river-guidance-graphical-rvf-seic1)
- Boat launches may become impacted/unusable during years with excess sediment load being transported downstream or inaccessible during high flow conditions.
- Toxic algal blooms have been known to occur during periods of warm weather and low river flow. Avoid water contact during these conditions. The following website tracks voluntary reporting of locations where toxic algal blooms have been reported: https://mywaterquality.ca.gov/habs/where/freshwater_events.html

Resources-At-Risk

Ecological: Chinook Salmon, Coho Salmon, Pacific Lamprey, Klamath River Lamprey, Northern Spotted Owl, Steelhead, Foothill Yellow-legged Frog, Southern Torrent Salamander, Western Pond Turtle

Economic: Rafting guide services, fishing guide services, local tourism

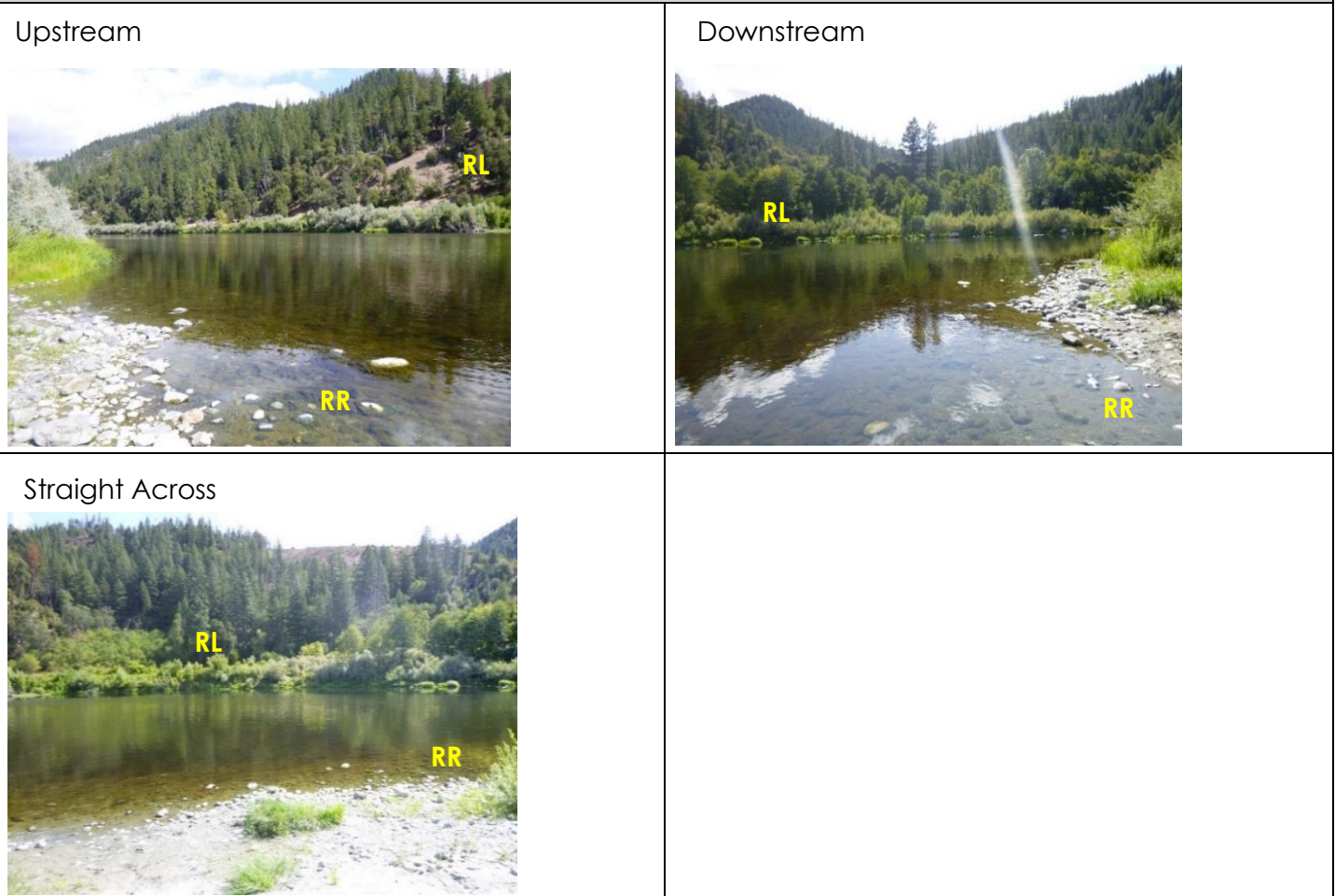
Tribal: Contact the Native American Heritage Commission at (916) 373-3710.

Cultural and Historic: Contact the Northeast Information Center at (530) 898-6256.

Site Description and Field Notes

<p>Site Location/Segment: KLA-SK-F-015</p>	<p>Site Description and Field Notes: This site has a ½ mile graded gravel road that leads down to the water's edge. Vault toilets, large parking area, but no potable water available on site. Elevation is at 950 ft.</p>			
<p>Gradient: Low</p>	<p>River Width: 86.87 m (285 ft)</p>	<p>Vehicular Access: All vehicle types can access this location.</p>	<p>Recreational Use: Camping, fishing, rafting/kayaking, water contact.</p>	<p>Boat Launches: Unimproved gravel boat launch located on-site. Raft, kayaks, or shallow draft vessels recommended.</p>
<p>Site Contact/s:</p>	<p>USFS – Klamath National Forest Happy Camp Ranger District (530) 493-2243</p>		<p>Karuk Tribe (530) 493-1600</p>	
<p>ESI Shoreline Type:</p>	<p>Mixed sand and gravel bars and gently sloping banks (5); Vegetated steeply sloping bluffs (8F); Vegetated low banks (9B)</p>			

Site Images



RR = River Right RL = River Left

Photo Date: 9/10/2019

Site Objectives: Deflection boom with product collection and shoreline protection.

Implementation: Start from river-left shoreline above unimproved boat launch and deploy 900 feet of swiftwater boom toward eddy at boat launch. Collect product with skimmer and pump directly to vacuum truck or tanks on shore. Deploy additional 200 feet of boom for shoreline protection.

Staging Area Location and Capabilities/Amenities/Waste Management: There is a large flat area near the river that, as a metric, can support 12 full size RV's as well as additional on road vehicles, which makes it a suitable location to stage equipment and manage wastes on-site.

Response Strategy Map (overview)

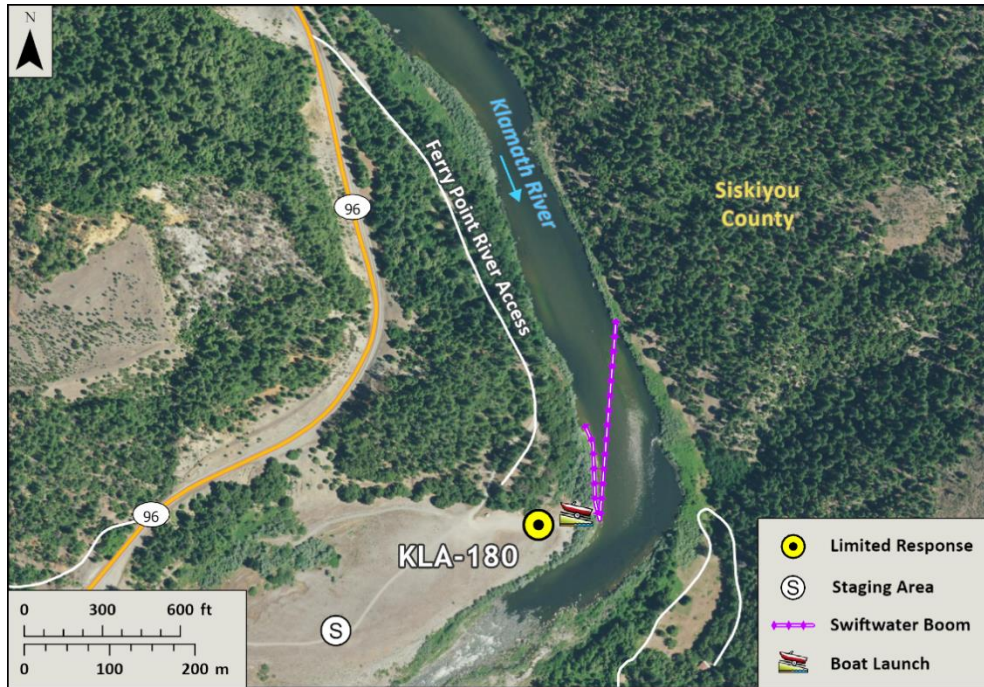


Table of Response Resources

Type	Sub-Type	Size	Unit	Quantity	Special Equipment or Comments
Boom	Swiftwater	8 to 12-in. skirt	Feet	1,100	Need ancillary equipment including anchors and stakes
Boom	Sorbent	5 to 8-in. dia.	Feet	3,000	
Pads and Sweep	Sorbent		Bale	40	
Skimmer	Disc or Drum			2	If needed
Response Vessel	Response and Boom Vessel			2	1 each, minimum. Kayaks, rafts, or shallow draft vessels recommended.
Personnel			Crew	6 to 10	2 vessel operators and 2 deckhands, minimum
Vacuum Truck		70	BBL	1	If needed
Storage Tank		20,000	Gallon	5	If needed