

Driving Directions:

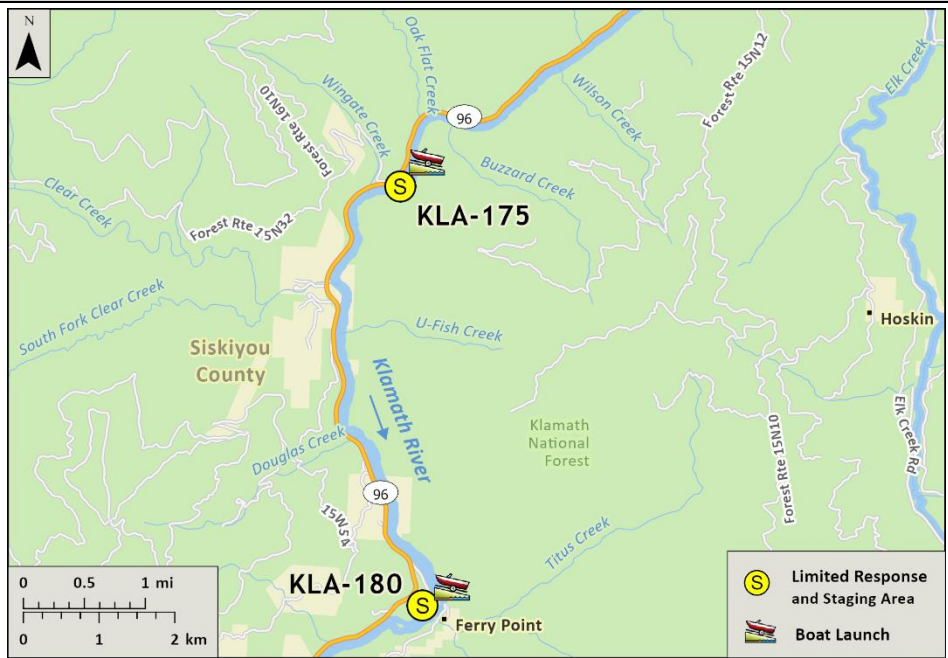
From North: Take I-5 South and take Exit 786, turn west (left) onto Anderson Grade Road and cross over the Klamath River. Turn south (left) onto Hwy 96 toward Happy Camp/Willow Creek. From the USFS Happy Camp Ranger District office, proceed 8.3 miles west to the Wingate Bar River Access.

From South: Take I-5 North and take Exit 786, merge directly onto Hwy 96. Continue south and west on Hwy 96 to Happy Camp. From the USFS Happy Camp Ranger District office, proceed 8.3 miles west to the Wingate Bar River Access.

Latitude/Longitude: 41.72260, -123.43704	Highway Postmile: Hwy 96 SIS 33.77	Railroad Milepost: N/A	Cell Service: No - Verizon Tested
--	--	-------------------------------	--

Nearest Address: 8.3 miles from Happy Camp, CA

Overview Street Map



Hazards, Restrictions and Advice for Responders

- Responders should be aware of seasonal swift water concerns. See nearest gauge for flow information at: [CNRFC - Hydrology - River Guidance - Graphical RVF - SEIC1 \(noaa.gov\)](http://cnrfc.noaa.gov/hydrology/river-guidance/graphical-rvf-seic1)
- Boat launches may become impacted/unusable during years with excess sediment load being transported downstream or inaccessible during high flow conditions.
- Toxic algal blooms have been known to occur during periods of warm weather and low river flow. Avoid water contact during these conditions. The following website tracks voluntary reporting of locations where toxic algal blooms have been reported: https://mywaterquality.ca.gov/habs/where/freshwater_events.html

Resources-At-Risk

Ecological: Chinook Salmon, Coho Salmon, Pacific Lamprey, Klamath River Lamprey, Northern Spotted Owl, Steelhead, Foothill Yellow-legged Frog, Western Pond Turtle

Economic: Rafting guide services, fishing guide services, local tourism


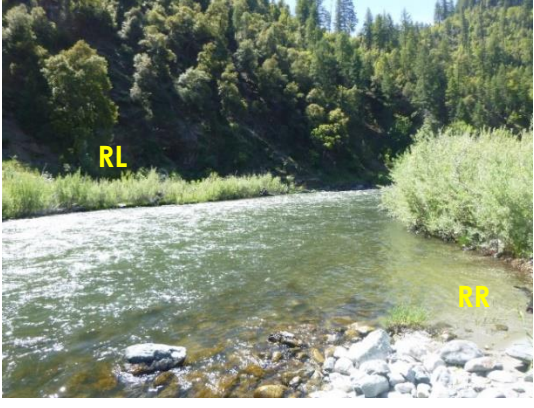
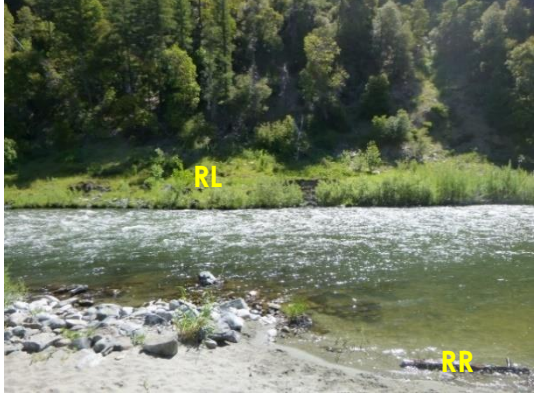
Tribal: Contact the Native American Heritage Commission at (916) 373-3710.

Cultural and Historic: Contact the Northeast Information Center at (530) 898-6256.

Site Description and Field Notes

<p>Site Location/Segment: KLA-SK-F-010</p>	<p>Site Description and Field Notes: This site has a graded gravel road that leads to the river's edge. USFS provides portable toilets at the parking area during summer months. No potable water available. Elevation is at 1000 ft.</p>			
<p>Gradient: High</p>	<p>River Width: 31.09 m (102 ft)</p>	<p>Vehicular Access: All vehicle types can access this location.</p>	<p>Recreational Use: Camping, fishing, rafting/kayaking, water contact.</p>	<p>Boat Launches: Unimproved gravel boat launch located on-site. Raft, kayaks, or shallow draft vessels recommended.</p>
<p>Site Contact/s:</p>	<p>USFS – Klamath National Forest Happy Camp Ranger District (530) 493-2243</p>		<p>Karuk Tribe (530) 493-1600</p>	
<p>ESI Shoreline Type:</p>	<p>Mixed sand and gravel bars and gently sloping banks (5); Vegetated steeply sloping bluffs (8F)</p>			

Site Images

<p>Upstream</p> 	<p>Downstream</p> 
<p>Straight Across</p> 	

RR = River Right RL = River Left

Photo Date: 5/26/2020

Site Objectives: Deflection boom with product collection and shoreline protection. Swift river velocity may impact efficacy of oil collection operations. If river velocity is too high for booming, consider manual site cleanup with additional shoreline protection.

Implementation: Start from river-left shoreline above unimproved boat launch and deploy 350 feet of swiftwater boom toward small eddy at boat launch. Collect product with skimmer and pump directly to vacuum truck or tanks on shore. Deploy additional 200 feet of boom for shoreline protection.

Staging Area Location and Capabilities/Amenities/Waste Management: Stage equipment and manage wastes in parking area above boat launch.

Response Strategy Map (overview)

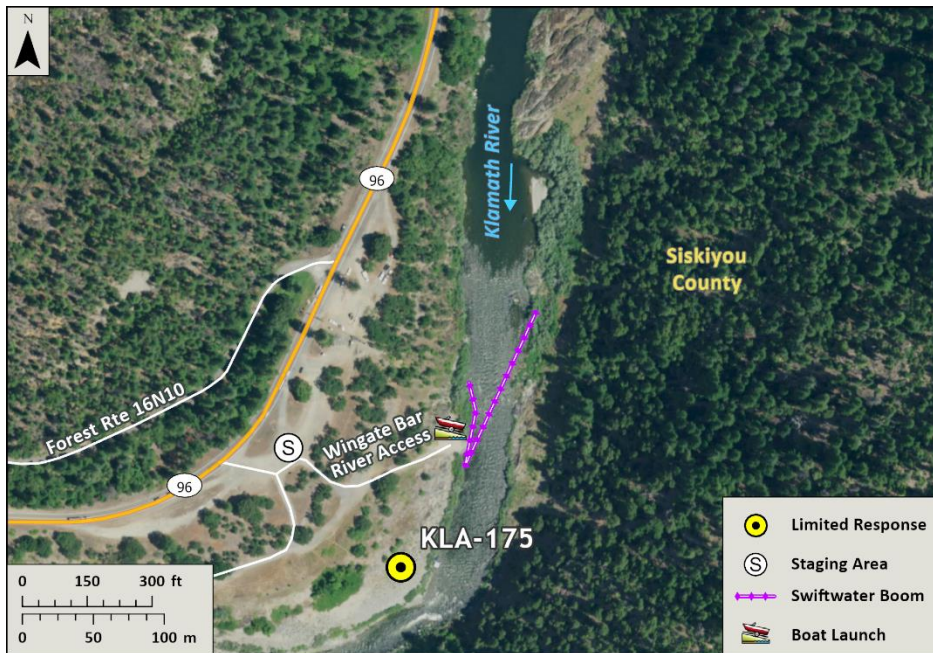


Table of Response Resources

Type	Sub-Type	Size	Unit	Quantity	Special Equipment or Comments
Boom	Swiftwater	8 to 12-in. skirt	Feet	550	Need ancillary equipment including anchors and stakes
Boom	Sorbent	5 to 8-in. dia.	Feet	1,100	
Pads and Sweep	Sorbent		Bale	40	
Skimmer	Disc or Drum			2	If needed
Response Vessel	Response and Boom Vessel			2	1 each, minimum. Kayaks, rafts, or shallow draft vessels recommended.
Personnel			Crew	6 to 10	2 vessel operators and 2 deckhands, minimum
Vacuum Truck		70	BBL	1	If needed
Storage Tank		20,000	Gallon	5	If needed