

**Driving Directions**

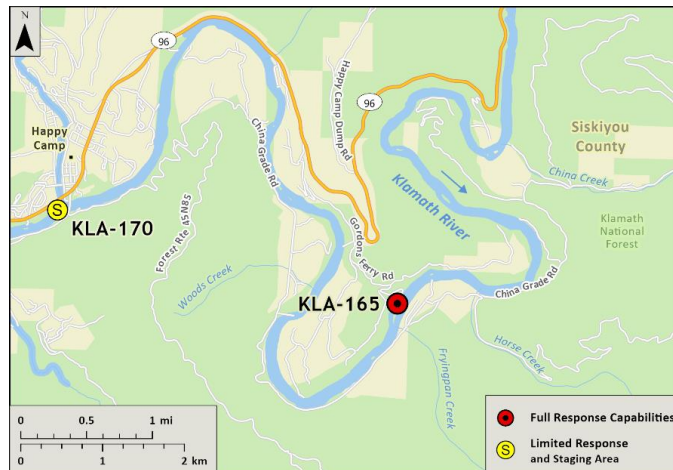
From North: Take I-5 South and take Exit 786, turn west (left) onto Anderson Grade Road and cross over the Klamath River. Turn south (left) onto Hwy 96 toward Happy Camp/Willow Creek and cross over the Ash Creek bridge. Continue 58.3 miles west after crossing over Ash Creek and turn left onto Gordon's Ferry Road. Continue 2 miles to unimproved gravel boat launch at rivers edge. The last 1.5 miles of this road is graded dirt.

From South: Take I-5 North and take Exit 786, merge directly onto Hwy 96. Continue south and west on Hwy 96 toward Happy Camp/Willow Creek and cross over the Ash Creek bridge. Continue 58.3 miles west after crossing over Ash Creek and turn left onto Gordon's Ferry Road. Continue 2 miles to unimproved gravel boat launch at rivers edge. The last 1.5 miles of this road is graded dirt.

<b>Latitude/Longitude:</b> 41.78078, -123.32871	<b>Highway Postmile:</b> Hwy 96 SIS 44.25	<b>Railroad Milepost:</b> N/A	<b>Cell Service:</b> Spotty - Verizon tested. Service available in Happy Camp
--	--	----------------------------------	---

**Nearest Address:** 4 miles from Happy Camp

**Overview Street Map**



**Hazards, Restrictions and Advice for Responders**

- Responders should be aware of seasonal swift water concerns. See nearest gauge for flow information at: [CNRFC - Hydrology - River Guidance - Graphical RVF - SEIC1 \(noaa.gov\)](https://www.cnrfc.noaa.gov/hydrology/river-guidance-graphical-rvf-seic1)
- Boat launches may become impacted/unusable during years with excess sediment load being transported downstream or inaccessible during high flow conditions.
- Toxic algal blooms have been known to occur during periods of warm weather and low river flow. Avoid water contact during these conditions. The following website tracks voluntary reporting of locations where toxic algal blooms have been reported: [https://mywaterquality.ca.gov/habs/where/freshwater\\_events.html](https://mywaterquality.ca.gov/habs/where/freshwater_events.html)

**Resources-At-Risk**

**Ecological:** Bald Eagle, Chinook Salmon, Coho Salmon, Pacific Lamprey, Klamath River Lamprey, Lower Klamath Marbled Sculpin, Northern Spotted Owl, Steelhead, Foothill Yellow-legged Frog, Western Pond Turtle

**Economic:** Rafting guide services, fishing guide services, local tourism

**Tribal:** Contact the Native American Heritage Commission at (916) 373-3710.

**Cultural and Historic:** Contact the Northeast Information Center at (530) 898-6256.

**Site Description and Field Notes**

<b>Site Location/Segment:</b> KLA-SK-E-020	<b>Site Description and Field Notes:</b> This popular fishing access point is mostly paved with an improved gravel section leading down to the river. The last ½ mile is steep, narrow and windy which would not be suitable for large vehicles and equipment. No water or restrooms on site. Elevation is at 1100 ft.			
<b>Gradient:</b> Low	<b>River Width:</b> 89.61 m (294 ft)	<b>Vehicular Access:</b> Most vehicle types can access this location. Recommend nothing larger than 70 bbl vacuum truck.	<b>Recreational Use:</b> Camping, fishing, rafting/kayaking, water contact.	<b>Boat Launches:</b> Unimproved gravel boat launch located on-site. Raft, kayaks, or shallow draft vessels recommended.
<b>Site Contact/s:</b>	USFS – Klamath National Forest Happy Camp Ranger District (530) 493-2243		Karuk Tribe (530) 493-1600	
<b>ESI Shoreline Type:</b>	Vegetated, steeply sloping banks (8F); Vegetated low banks (9B).			

**Site Images**

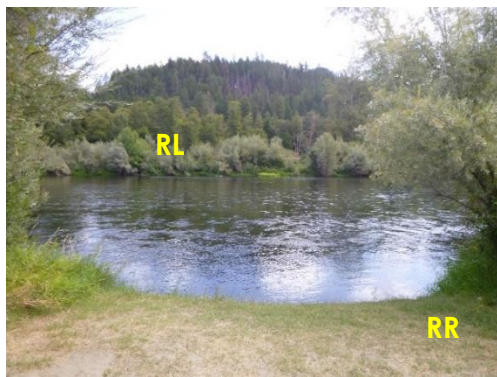
Upstream



Downstream



Straight Across



**RR = River Right RL = River Left**

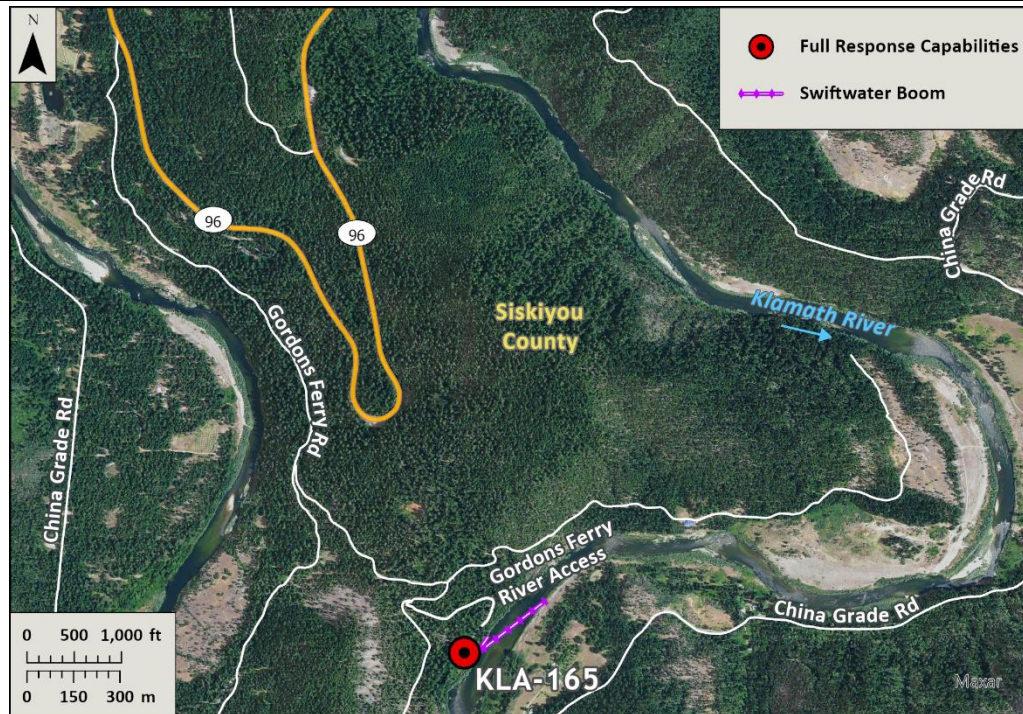
**Photo Date:** 9/10/2019

**Site Objectives:** Deflection boom with product collection and shoreline protection.

**Implementation:** Start from river-left shoreline above boat launch and deploy 900 feet of swiftwater boom toward eddy at boat launch. Collect product with skimmer and pump directly to vacuum truck or tanks on shore. Deploy additional 200 feet of boom for shoreline protection.

**Staging Area Location and Capabilities/Amenities/Waste Management:** There is limited parking and space for staging equipment near the boat launch. Crews may need to stage equipment at turnouts along Gordon's Ferry Road or along Hwy 96 closer to Happy Camp.

**Response Strategy Map (overview)**



**Table of Response Resources**

Type	Sub-Type	Size	Unit	Quantity	Special Equipment or Comments
Boom	Swiftwater	8 to 12-in. skirt	Feet	1,100	Need ancillary equipment including anchors and stakes
Boom	Sorbent	5 to 8-in. dia.	Feet	2,200	
Pads and Sweep	Sorbent		Bale	40	
Skimmer	Disc or Drum			2	If needed
Response Vessel	Response and Boom Vessel			2	1 each, minimum. Kayaks, rafts, or shallow draft vessels recommended.
Personnel			Crew	6 to 10	2 vessel operators and 2 deckhands, minimum
Vacuum Truck		70	BBL	1	If needed
Storage Tank		20,000	Gallon	5	If needed