

Driving Directions:

From North: Take I-5 South and take Exit 786, turn west (left) onto Anderson Grade Road and cross over the Klamath River. Turn south (left) onto Hwy 96 toward Happy Camp/Willow Creek and cross over the Ash Creek bridge. Continue 32.1 miles west after crossing over Ash Creek and enter campground.

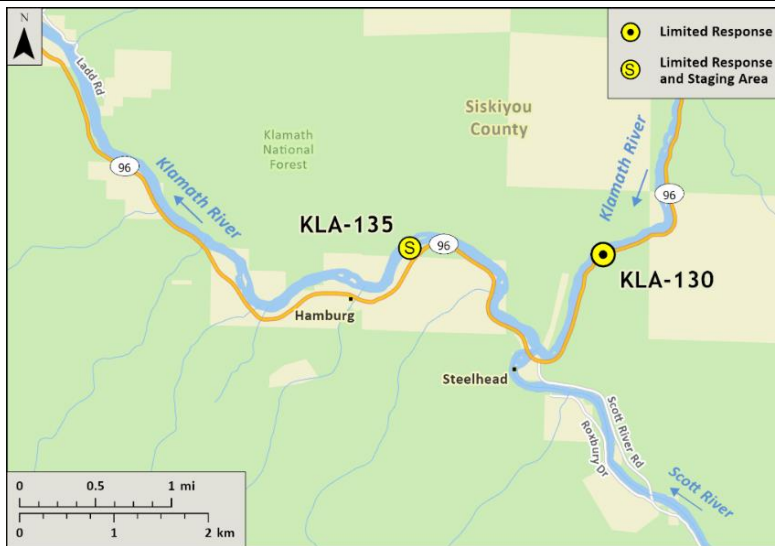
From South: Take I-5 North and take Exit 786, merge directly onto Hwy 96. Continue south and west on Hwy 96 toward Happy Camp/Willow Creek and cross over the Ash Creek bridge. Continue 32.1 miles west after crossing over Ash Creek and enter campground.

Unimproved dirt boat launch is located at river's edge.

Latitude/Longitude: 41.78804, -123.05320	Highway Postmile: Hwy 96 SIS 70.00	Railroad Milepost: N/A	Cell Service: No - Verizon Tested
--	--	-------------------------------	--

Nearest Address: 63822 State Hwy. 96, Happy Camp, CA 96034

Overview Street Map



Hazards, Restrictions and Advice for Responders

- Responders should be aware of seasonal swift water concerns. See nearest gauge for flow information at: [CNRFC - Hydrology - River Guidance - Graphical RVF - IRGC1 \(noaa.gov\)](http://CNRFC-Hydrology-River-Guidance-Graphical-RVF-IRGC1.noaa.gov)
- Boat launches may become impacted/unusable during years with excess sediment load being transported downstream or inaccessible during high flow conditions.
- Toxic algal blooms have been known to occur during periods of warm weather and low river flow. Avoid water contact during these conditions. The following website tracks voluntary reporting of locations where toxic algal blooms have been reported: https://mywaterquality.ca.gov/habs/where/freshwater_events.html

Resources-At-Risk

Ecological: Townsend's Big-eared Bat, Chinook Salmon, Coho Salmon, Pacific Lamprey, Klamath River Lamprey, Lower Klamath Marbled Sculpin, Northern Spotted Owl, Steelhead, Foothill Yellow-legged Frog, Scott Bar Salamander, Western Pond Turtle

Economic: Rafting guide services, fishing guide services, local tourism

Tribal: Contact the Native American Heritage Commission at (916) 373-3710.

Cultural and Historic: Contact the Northeast Information Center at (530) 898-6256.

Site Description and Field Notes

<p>Site Location/Segment: KLA-SK-C-025</p>	<p>Site Description and Field Notes: This shaded campground has water and vault toilets and a sandy launch area for drift boats, rafts and kayaks. Elevation is at 1400 ft.</p>			
<p>Gradient: Low</p>	<p>River Width: 41.15 m (135 ft)</p>	<p>Vehicular Access: All vehicle types can access this location.</p>	<p>Recreational Use: Camping, fishing, rafting/kayaking, water contact.</p>	<p>Boat Launches: Unimproved dirt boat launch located on-site. Raft, kayaks, or shallow draft vessels recommended.</p>
<p>Site Contact/s:</p>	<p>USFS – Klamath National Forest Happy Camp Ranger District (530) 493-2243</p>		<p>Karuk Tribe (530) 493-1600</p>	
<p>ESI Shoreline Type:</p>	<p>Vegetated steeply sloping bluffs (8F); Vegetated low banks (9B)</p>			

Site Images

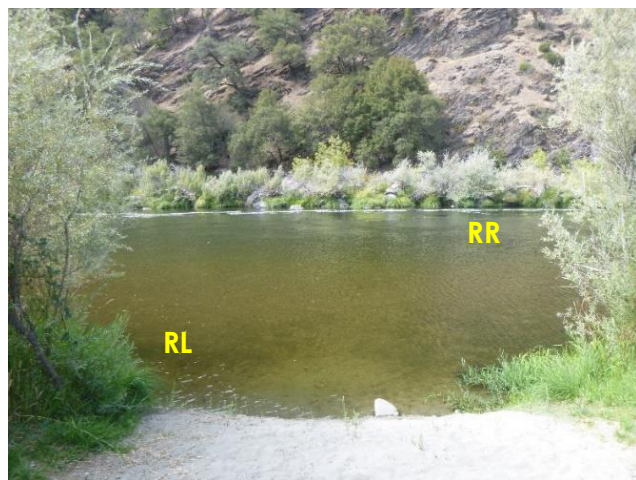
Upstream



Downstream



Straight Across



RR = River Right RL = River Left

Photo Date: 9/10/2019

Site Objectives: Deflection boom with product collection and shoreline protection.

Implementation: Start from river-right shoreline above boat launch and deploy 400 feet of swiftwater boom toward eddy at boat launch. Collect product with skimmer and pump directly to vacuum truck or tanks on shore. Deploy additional 200 feet of boom for shoreline protection.

Staging Area Location and Capabilities/Amenities/Waste Management: Stage equipment and manage wastes in campground parking area.

Response Strategy Map (overview)

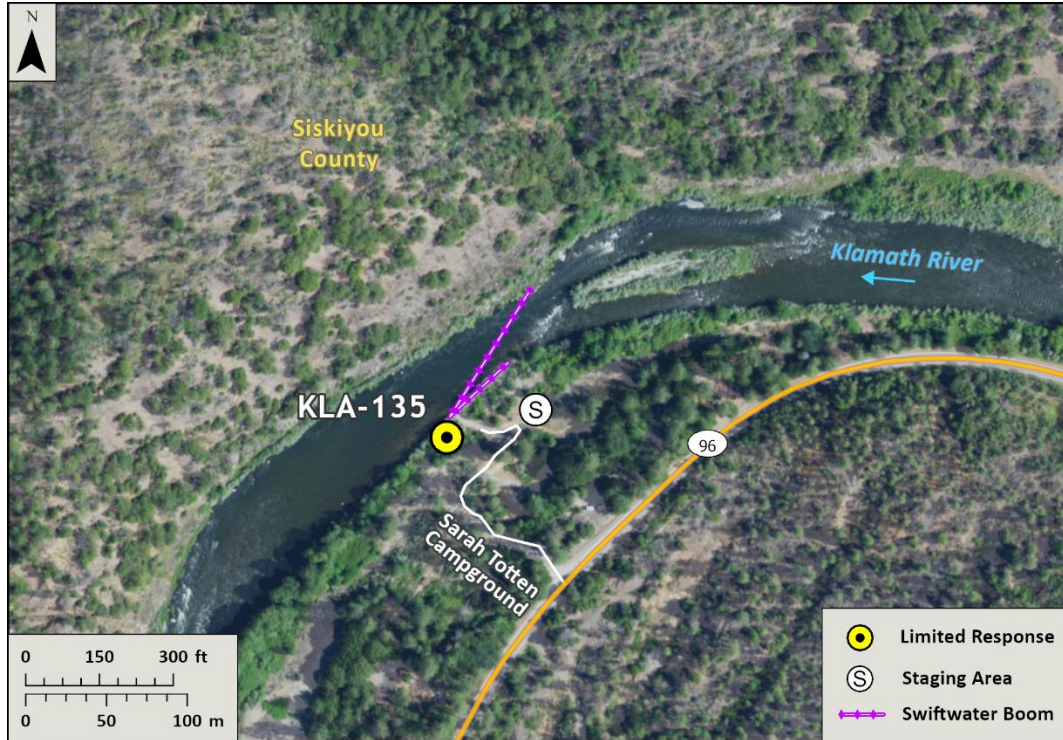


Table of Response Resources

Type	Sub-Type	Size	Unit	Quantity	Special Equipment or Comments
Boom	Swiftwater	8 to 12-in. skirt	Feet	600	Need ancillary equipment including anchors and stakes
Boom	Sorbent	5 to 8-in. dia.	Feet	1,200	
Pads and Sweep	Sorbent		Bale	40	
Skimmer	Disc or Drum			2	If needed
Response Vessel	Response and Boom Vessel			2	1 each, minimum. Kayaks, rafts, or shallow draft vessels recommended.
Personnel			Crew	6 to 10	2 vessel operators and 2 deckhands, minimum
Vacuum Truck		120	BBL	1	If needed
Storage Tank		20,000	Gallon	5	If needed