

Driving Directions:

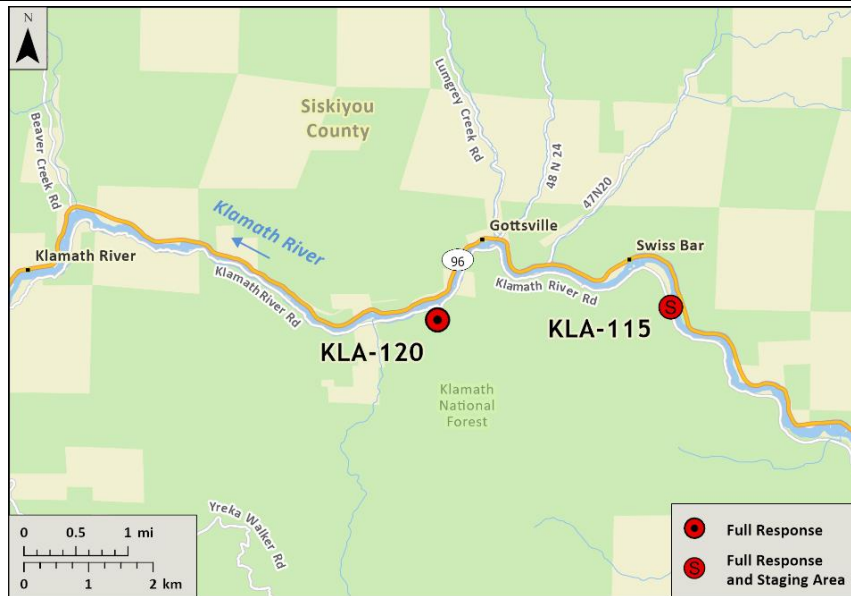
From North: Take I-5 South and take Exit 786, turn west (left) onto Anderson Grade Road and cross over the Klamath River. Turn south (left) onto Hwy 96 toward Happy Camp/Willow Creek. Continue 9.5 miles west after crossing over Ash Creek and turn left into dirt road leading to boat launch near river.

From South: Take I-5 North and take Exit 786, merge directly onto Hwy 96. Continue south and west on Hwy 96 toward Happy Camp/Willow Creek and cross over the Ash Creek bridge. Continue 9.5 miles west after crossing over Ash Creek and turn left into dirt road leading to boat launch near river.

Latitude/Longitude: 41.85824, -122.75018	Highway Postmile: Hwy 96 SIS 92.14	Railroad Milepost: N/A	Cell Service: No - Verizon tested
--	--	-------------------------------	--

Nearest Address: 21 Miles from Yreka, CA

Overview Street Map



Hazards, Restrictions and Advice for Responders

- Responders should be aware of seasonal swift water concerns. See nearest gauge for flow information at: [CNRFC - Hydrology - River Guidance - Graphical RVF - IRGC 1 \(noaa.gov\)](http://CNRFC - Hydrology - River Guidance - Graphical RVF - IRGC 1 (noaa.gov)).
- Boat launches may become impacted/unusable during years with excess sediment load being transported downstream or inaccessible during high flow conditions.
- Toxic algal blooms have been known to occur during periods of warm weather and low river flow. Avoid water contact during these conditions. The following website tracks voluntary reporting of locations where toxic algal blooms have been reported: https://mywaterquality.ca.gov/habs/where/freshwater_events.html

Resources-At-Risk

Ecological: Chinook Salmon, Coho Salmon, Pacific Lamprey, Klamath River Lamprey, Lower Klamath Marbled Sculpin, Northern Spotted Owl, Steelhead, Foothill Yellow-legged Frog, Western Pond Turtle

Economic: Rafting guide services, fishing guide services, local tourism



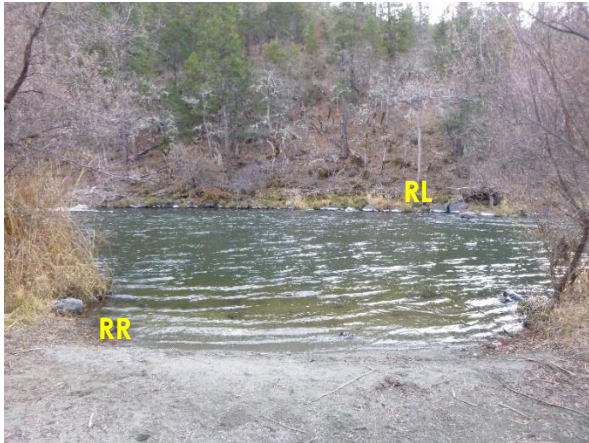
Tribal: Contact the Native American Heritage Commission at (916) 373-3710.

Cultural and Historic: Contact the Northeast Information Center at (530) 898-6256.

Site Description and Field Notes

Site Location/Segment: KLA-SK-C-005	Site Description and Field Notes: This site has a sandy road and concrete ADA accessible sidewalk down to the water's edge. There is an ADA accessible vault restroom, parking area and dispersed camping area. No potable water available at this location. Elevation is at 2000 ft.			
Gradient: Medium	River Width: 33.83 m (111 ft)	Vehicular Access: All vehicle types can access this location.	Recreational Use: Camping, fishing, rafting/kayaking, water contact.	Boat Launches: Unimproved dirt boat launch located on-site. Raft, kayaks, or shallow draft vessels recommended.
Site Contact/s:	USFS – Klamath National Forest Happy Camp Ranger District (530) 493-2243		Karuk Tribe (530) 493-1600	
ESI Shoreline Type:	Vegetated, steeply sloping bluffs (8F); Vegetated low banks (9B).			

Site Images

<p>Upstream</p> 	<p>Downstream</p> 	
<p>Straight Across</p> 		
<p>RR = River Right RL = River Left</p>		<p>Photo Date: 11/25/2019</p>

Site Objectives: Deflection boom with product collection and shoreline protection.

Implementation: Start from river-left shoreline above boat launch and deploy 350 feet of swiftwater boom toward eddy at boat launch. Collect product with skimmer and pump directly to vacuum truck or tanks on shore. Deploy additional 200 feet of boom for shoreline protection.

Staging Area Location and Capabilities/Amenities/Waste Management: Stage equipment and manage wastes in dirt parking area near boat launch.

Response Strategy Map (overview)

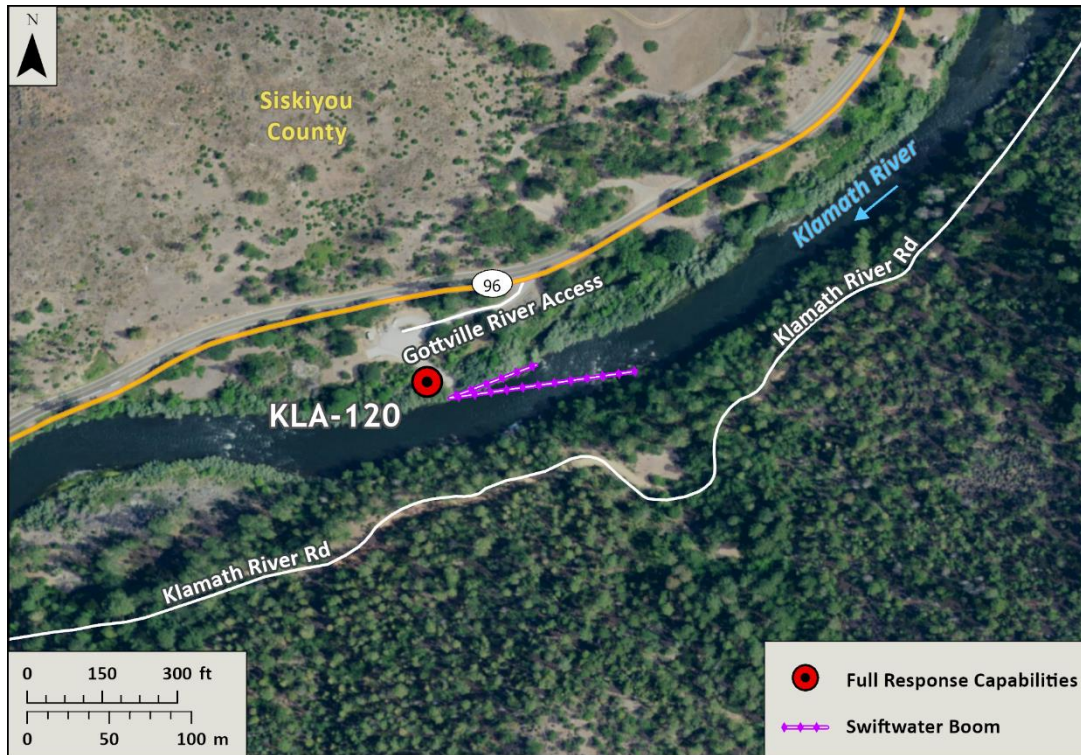


Table of Response Resources

Type	Sub-Type	Size	Unit	Quantity	Special Equipment or Comments
Boom	Swiftwater	8 to 12-in. skirt	Feet	550	Need ancillary equipment including anchors and stakes
Boom	Sorbent	5 to 8-in. dia.	Feet	1,100	
Pads and Sweep	Sorbent		Bale	40	
Skimmer	Disc or Drum			2	If needed
Response Vessel	Response and Boom Vessel			2	1 each, minimum. Kayaks, rafts, or shallow draft vessels recommended.
Personnel			Crew	6 to 10	2 vessel operators and 2 deckhands, minimum
Vacuum Truck		120	BBL	1	If needed
Storage Tank		20,000	Gallon	5	If needed